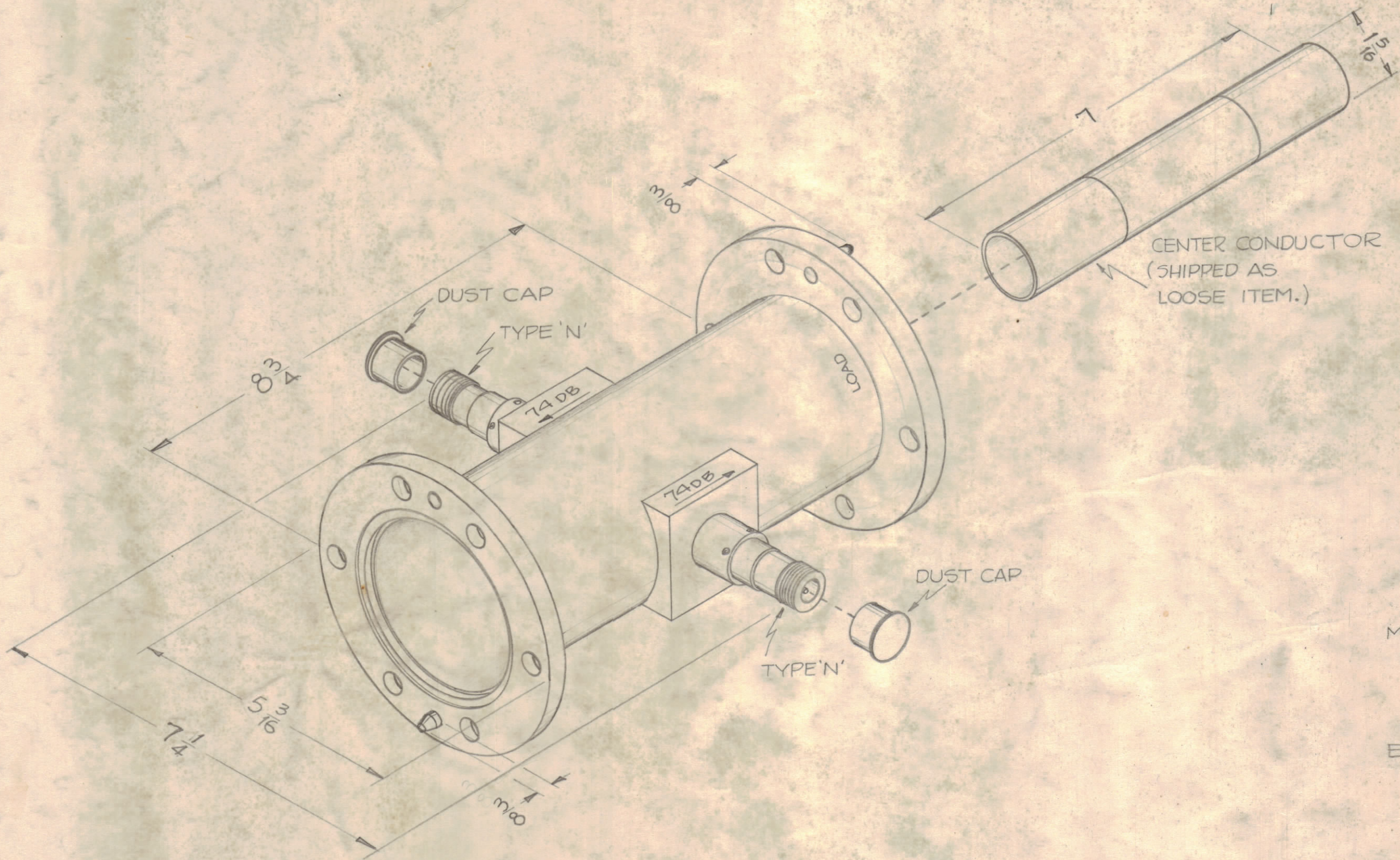


NOTICE TO PERSONS RECEIVING THIS DRAWING

THE TECHNICAL MATERIEL CORPORATION claims proprietary right in the material disclosed herein. This drawing is issued in confidence for engineering information only and may not be reproduced or used to manufacture any thing shown hereon without permission from THE TECHNICAL MATERIEL CORPORATION to the user. This drawing is loaned for mutual assistance and is subject to recall at any time.

Property of:
THE TECHNICAL MATERIEL CORPORATION
MAMARONECK, NEW YORK



SPECIFICATIONS

MECHANICAL ~

- A) STANDARD EIA FLANGES FOR 3-1/8 LINE.
- B) TYPE N FEMALE CONNECTOR FOR CRYSTAL MOUNTS.

ELECTRICAL ~

- A) POWER: 20KW AVG, 40KW PEAK, WORKING WHEN MISMATCHED BY 2:1.
- B) FREQUENCY RANGE: 4-28 mc.
- C) BI-DIRECTIONAL UNIT MEASURING FORWARD OR REFLECTED POWER, DIRECTIVITY 23 DB.
- D) INNER CONDUCTOR TO BE DIELECTRICALLY COATED FOR APPROX 3" CENTER.
- E) IMPEDANCE 50Ω.
- F) DECOUPLING VALUE 74DB AT 12MC.

MODEL 169B-12-74

REQ. ITEM	PART NO.	DESCRIPTION	SYMBOL
		THE TECHNICAL MATERIEL CORP. MAMARONECK, NEW YORK	
		COUPLER, DIRECTIONAL	
		MATERIAL	
		TYPE & TEMPER	
		HEAT TREAT. SPEC.	
		FINISH	

DRW.	ELEC. DES. APP.	MECH. DES. APP.
CHECKED	16	28
FINAL APPROVAL		
DC-100		

ISSUE	ZONE	DESCRIPTION	DATE	CH. NO.	DRAFTS	CHECKER	ENG. APP.

TOLERANCES		SCALE: 5401-110
MAXIMUM ALLOWABLE TOLERANCES HAVE BEEN DETERMINED AND ANY DEVIATIONS WILL BE CAUSE FOR REJECTION. REMOVE ALL BURRS AND SHARP EDGES		

1	GPT-40K	AX-209		7-28-60
REQ PER UNIT	MODEL	SECTION	ASSY. NO.	DATE