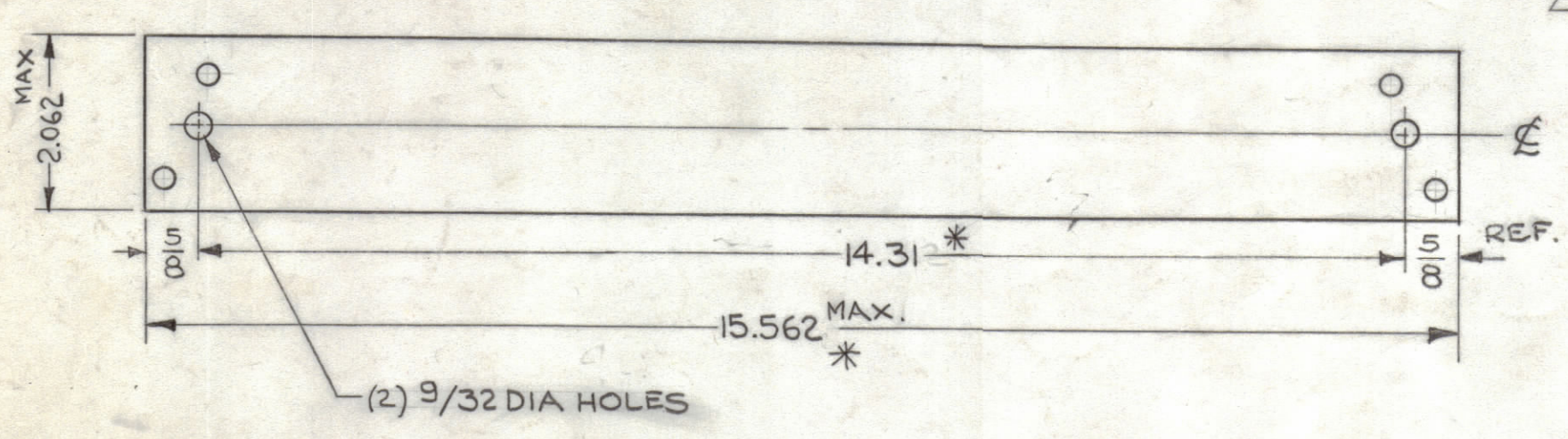
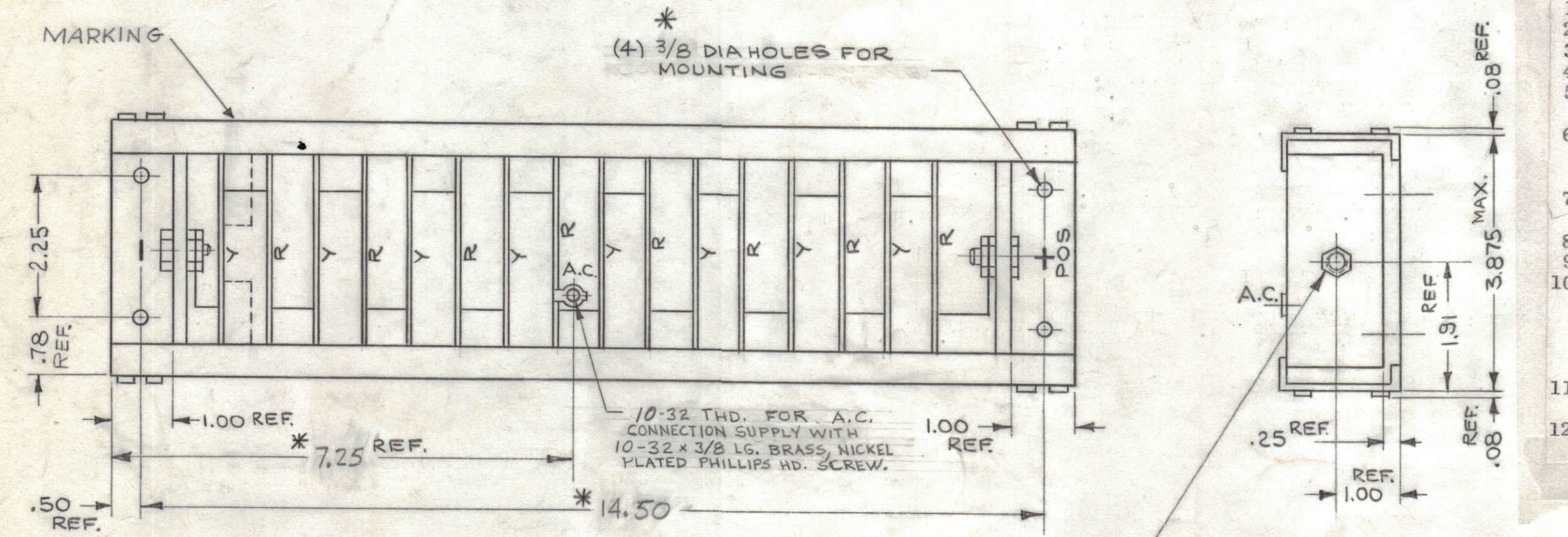


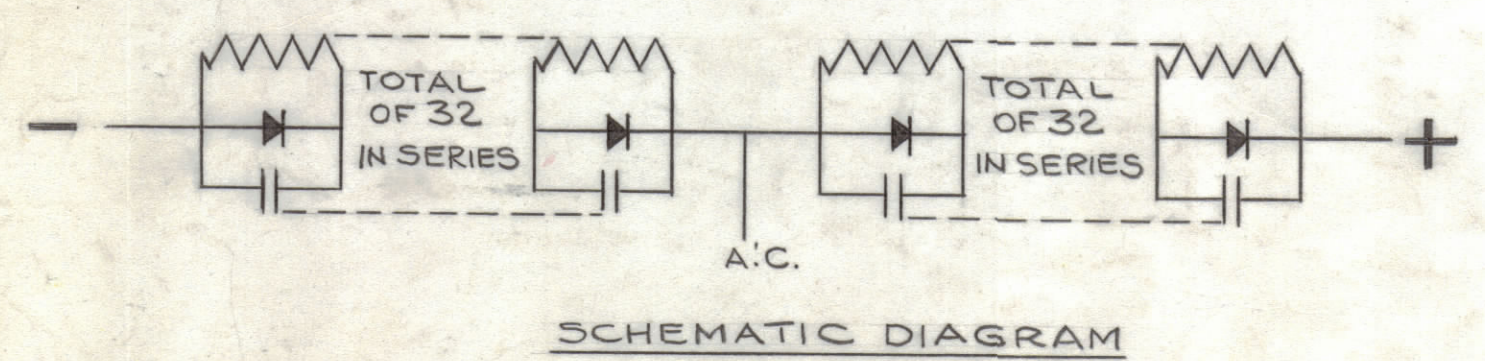
TMC PART No.	TMC CONTROL No.	MFG. CODE	MFG. P/N
DD116	DD116XX329	S401-239	SD15A09MOB17

REVISIONS						
ZONE	SYM	DESCRIPTION	DATE	E.M.N. NO.	DRAFT	CHKD
X		EXPERIMENTAL RELEASE	1-25-65	X	WFB	
Ø		ORIGINAL RELEASE FOR PRODUCTION	2-26-65		WFB	
A		"(4) 3/8 DIA. WAS "(4) .27 DIA. ON THD. CALLOUTS: " SUPPLY WITH 10-32 X 3/8 LG. ... " ADD. (2 PL.)	4-14-65	13852	97	WFB
B		CURRENT & VOLTAGE VALUES REVISED. NOTE #12, TMC P/N CHG. ADDED. N/W WAS 6-32, DIM. 14.31 WAS 14.312. N.F.B. PT. NO. DELETED	1-27-65	15017	H.V.	WFB
C		NOTE & NEW DIMS ADDED	8-27-74	21174	CP	CP
D		DD116 MFG CODE WAS S401-116-2 MFG. NO. 3200018610	5-24-76	21389	SDL	CP
E		NOTE "NO LONGER AVAIL NOTE Added	9-14-79	21714	C.D.L.	CP
		SHEET 2 Added.	9-18-79	21714	MAC	CP

\* NOTE:  
DUE TO UNAVAILABILITY OF ORIGINAL PARTS, SLIGHT DIMENSIONAL CHANGES ON REPLACEMENT STACK REQ'S RELOCATION OF ONE MOUNTING HOLE ON HVRC-1 ASSY. (NEW MOUNTING DIM. 15")



OLD DIM.	NEW DIM.
* 14.31	15"
* 15.562	16.250
* 3/8 DIA	5/16 X 9/16 SLOT
* 7.25	8.00
* 14.50	15.25



- SPECIFICATIONS
- TYPE: DOUBLER
  - NO. OF CIRCUIT LEGS: TWO WITH EIGHT MODULES PER LEG (4 DIODES PER MODULE)
  - MAX. PEAK REVERSE WORKING VOLTAGE: EACH LEG 20KV
  - MAX. PEAK REVERSE CURRENT AT RATED PRV: 20MA
  - MAX. AVERAGE RECTIFIED CURRENT @50°C 4.8 AMPS @ 1000LFM FORCED AIR  
1.2 AMPS @ NATURAL CONVECTION
  - PEAK FORWARD SURGE OVERLOAD CURRENT AT RATED LOAD, 1 CYCLE @ 60CPS: 100 AMP  
6 CYCLES @ 60CPS: 65 AMP
  - MAX. FULL LOAD FORWARD VOLTAGE DROP, FULL CYCLE AVERAGE @ 50°C: 34.5 VOLTS EACH LEG @ 4.8 AMPS.
  - OPERATING TEMP. RANGE: -55 TO +85°C
  - STORAGE TEMP: -55°C TO +71°C
  - MATERIAL: EXTERIOR-POLYESTER FIBERGLASS
- NOTE: FOR REPLACEMENT OF MODULE BOARDS ADD A "Y" FOR YELLOW OR "R" FOR RED TO TMC P/N OR MFG. P/N.
- MFG. MODULE PART NUMBER 366 B-E
  - MARKING: TMC P/N AND TMC CONTROL NO. TO BE STAMPED PER. CHART 1/8 BLACK GOTHIC WHERE SHOWN.

DD116 NO LONGER AVAILABLE REPLACED BY DD 116-2 (AX799) (SEE SHEET 2)

REQ'D.	ITEM	PART NUMBER	DESCRIPTION	SYMBOL
LIST OF MATERIAL				
MATERIAL		THE TECHNICAL MATERIEL CORP. MAMARONECK, NEW YORK		
FINISH		TITLE RECTIFIER, SEMICONDUCTOR DEVICE		
DRAWN		DATE	FINAL APPROVAL	
CHECKED		DATE	DATE	
ELECT. DES.		DATE	DATE	
MECH. DES.		DATE	DATE	

HVRC-1		
Q'TY./UNIT	MODEL USED ON	ASS'Y. NO.
SCALE	CODE	S401-329
	C	

STANDARD DRAWING NOTES