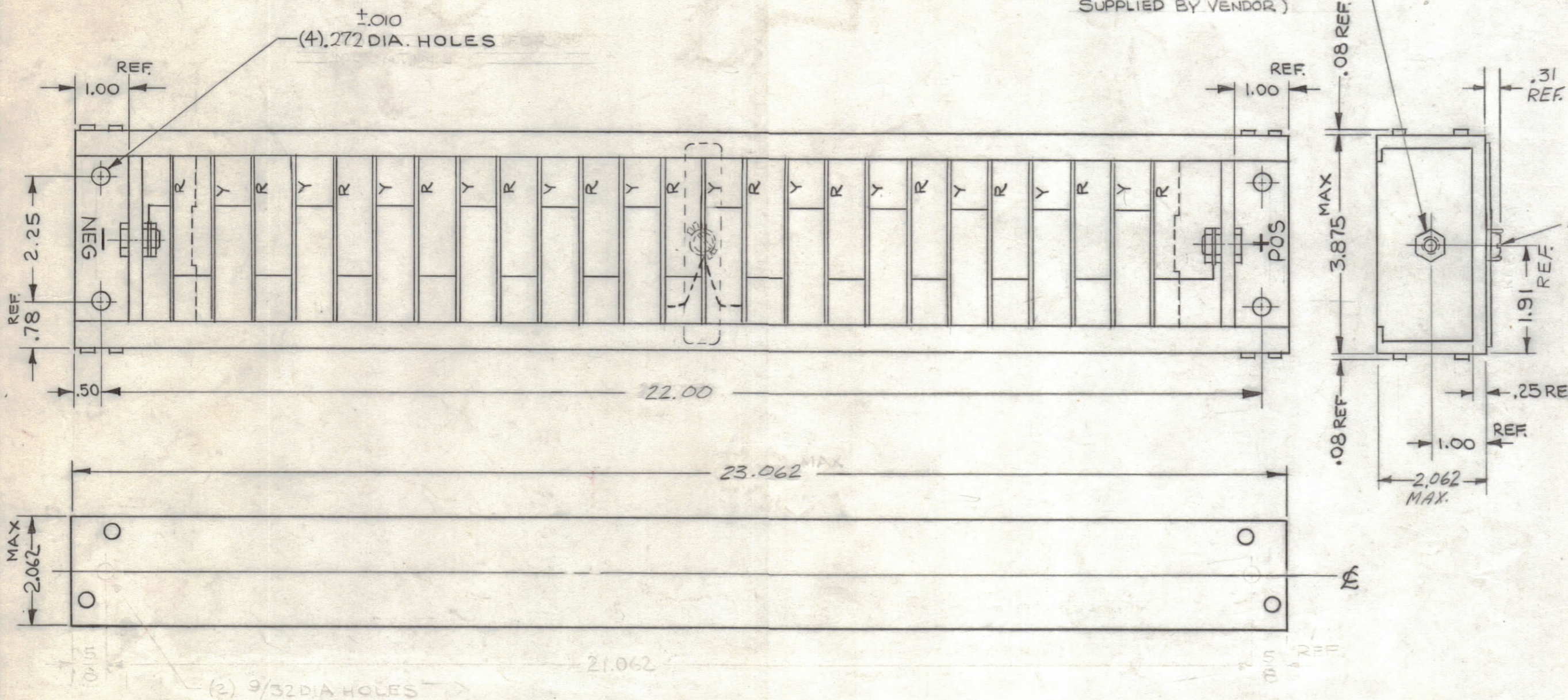


REVISIONS						
ZONE	SYM	DESCRIPTION	DATE	E.M.N. NO.	DRAFT	CHKD
	X	EXPERIMENTAL RELEASE		X		
	X ₁	UPDATED PICTORIAL; ADD. SPECIFICATIONS	4-8-65	X ₁	HLA	
	Ø	ORIGINAL RELEASE FOR PRODUCTION	5-21-64	X ₂	CJT	
	A	SPECIFICATIONS 1-7, 11 REVISED, (2) 9/32 DIA HGS DELETED, (2) 22 WAS 21.25, 23.062 WAS 22.312, (4) 272 DIA HLS W/ 3/8 DIA. AC CONNECTION ADDED, MFG NO. W/508C679653	12/12/65	15426	DVV	<i>DB</i>
	B	DELETED REPLACEMENT NOTE	7-12-66	16538	HCA	<i>DB</i>

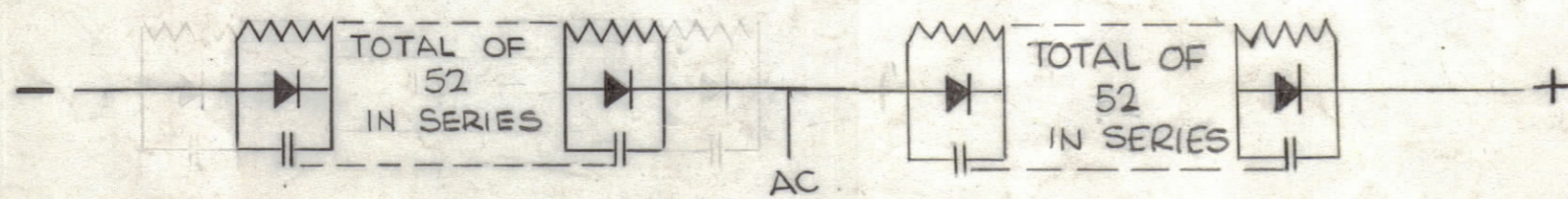
SPECIFICATIONS

- 1- TYPE: DOUBLER, HALF WAVE.
- 2- NO. OF CIRCUIT LEGS: 2 (13 MODULES OF 4 DIODES EACH MODULE PER LEG)
- 3- MAX. PEAK REVERSE WORKING VOLTAGE: 32.5KV PER LEG
- 4- MAX. PEAK REVERSE CURRENT @ RATED PRV: 20 MA.
- 5a- MAX. AVERAGE RECTIFIED CURRENT @ 5°C:
 G. 4 AMPS @ 1000 CFM FORCED AIR 2.2 AMPS @ NATURAL CONVECTION
 b. MAX AVERAGE RECTIFIED CURRENT @ 85°C: 2.5 AMPS @ 150 LFM (MIN)
- 6- PEAK SURGE OVERLOAD CURRENT @ RATED LOAD
 1 CYCLE @ 60 CPS: 240 AMPS
 6 CYCLES @ 60 CPS: 45 AMPS
- 7- MAX. FULL LOAD FORWARD VOLTAGE DROP, FULL CYCLE AVERAGE @ 45°C:
 56.2V @ G. 4 AMPS
- 8- OPERATING TEMP. RANGE: -55° TO +85° C
- 9- STORAGE TEMP.: -55° TO +71° C
- 10- MATERIAL: EXTERIOR - POLYESTER FIBERGLASS
- 11- MFG. MODULE TYPE NO.: 404B-E

10-32 X .56 FOR (+) & (-) CONNECTIONS (10-32 X 3/8 PH. H. SCREW SUPPLIED BY VENDOR)



NOTE: FOR REPLACEMENT OF MODULE BOARDS ADD A 10-32 SCREW FOR AC CONNECTION



SCHEMATIC DIAGRAM

REQ'D.	ITEM	PART NUMBER	DESCRIPTION	SYMBOL
BUDETTI LIST OF MATERIAL				
MATERIAL		THE TECHNICAL MATERIEL CORP. MAMARONECK, NEW YORK		
FINISH		TITLE: RECTIFIER, SEMICONDUCTOR DEVICE, HIGH VOLTAGE SILICON		
UNLESS OTHERWISE SPECIFIED DIMENSIONS ARE IN INCHES AND INCLUDE CHEMICALLY APPLIED OR PLATED FINISHES		DRAWN: <i>hro</i>	DATE: 1-26-65	FINAL APPROVAL: <i>[Signature]</i>
DECIMALS: .x ± .05, .xx ± .01, .xxx ± .005		CHECKED: <i>hro</i>	DATE: 5/19/65	DATE: <i>[Signature]</i>
FRACTIONS: ± 1/64, ANGLES: ± 0° 30'		ELECT. DES: <i>hro</i>	DATE: <i>[Signature]</i>	DATE: <i>[Signature]</i>
TOLERANCES: ± 1/64, ± 0° 30'		MECH. DES: <i>hro</i>	DATE: <i>[Signature]</i>	DATE: <i>[Signature]</i>
SHEET			DD118	B

Q'TY./UNIT	MODEL USED ON	ASS'Y. NO.
	HVRA-1	
SCALE: <i>1</i>	CODE: C	S401-329 (320C018G08)
THE CONTENTS OF THIS DRAWING ARE THE EXCLUSIVE PROPERTY OF THE TECHNICAL MATERIEL CORP. ITS UNAUTHORIZED USE OR REPRODUCTION IN WHOLE OR IN PART IS STRICTLY FORBIDDEN.		

NOTES

STANDARD DRAWING