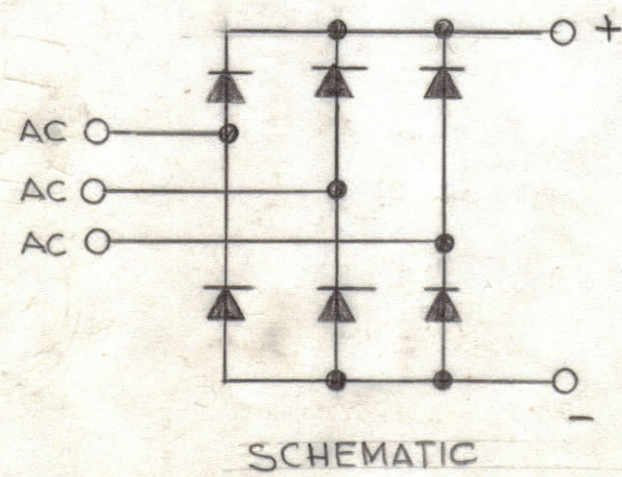
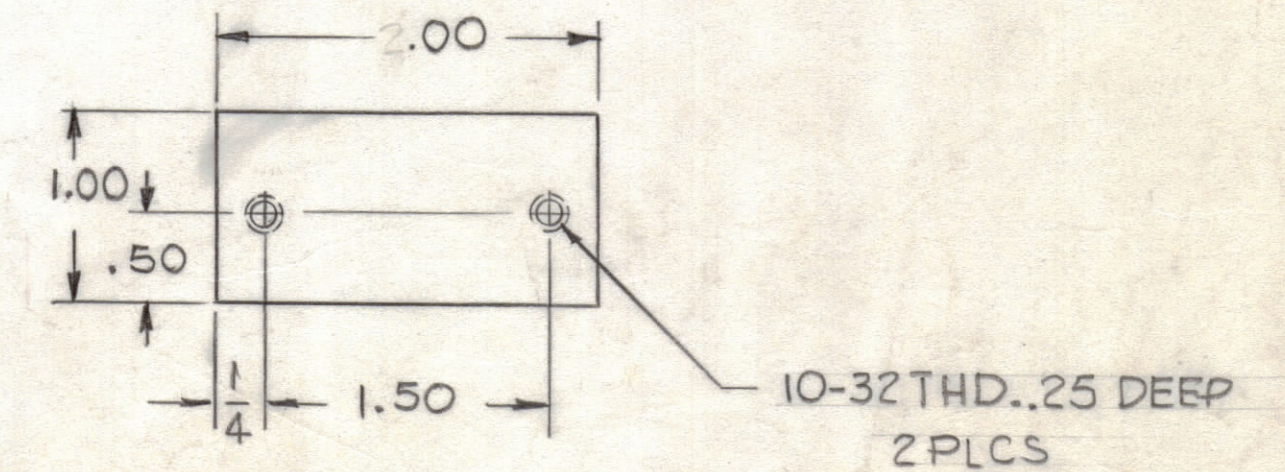
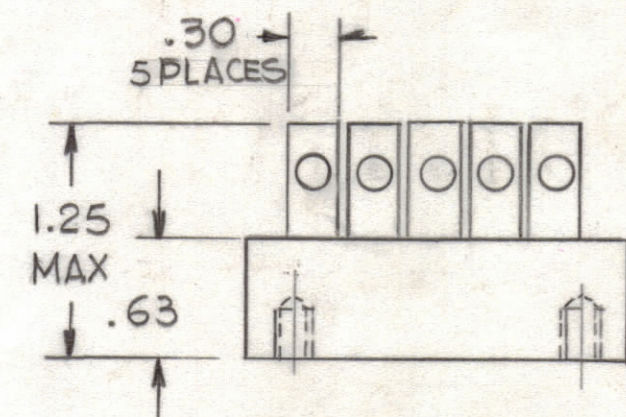
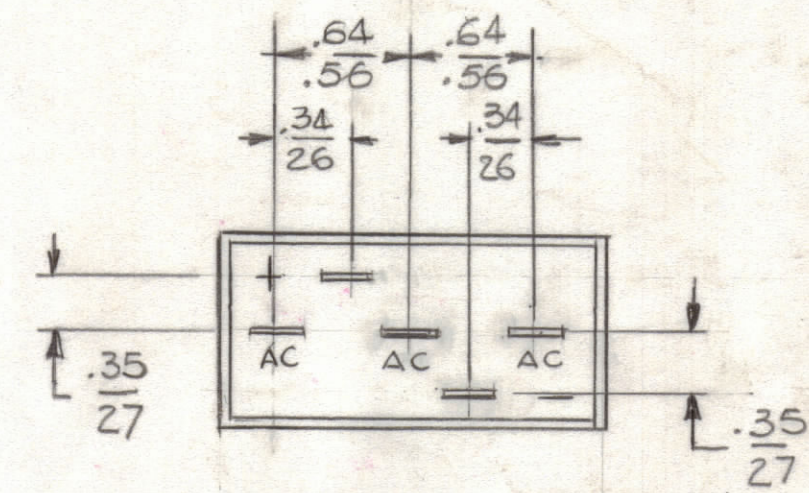


MFG P/NO.	PEAK INVERSE VOLTAGE PER LEG	RMS VOLTAGE PER LEG	AVERAGE RECTIFIED CURRENT		MAXIMUM FORWARD VOLTAGE @ 10A/LEG	REVERSE CURRENT PER LEG @ PIV		ONE CYCLE SURGE CURRENT
	VOLTS	VOLTS	AMPS	AMPS	VOLTS	μA	μA	AMPS
	25°C	25°C	55°C	100°C	25°C	25°C	100°C	25°C
5C3BK05	50	35	50	33	1.1	6	90	375

REVISIONS						
ZONE	LTR	DESCRIPTION	DATE	E.M.N.NO	DRAFT	CHKD APPD
	Ø	ORIGINAL RELEASE FOR PROD.	7/77	H	GDL	SR *



REF: SEMTECH CORP.

1	HFT-10K	A5704
QTY / UNIT	MODEL USED ON	ASS'Y NO.
APPLICATION		
	CODE	S401-

NOTICE TO PERSONS RECEIVING THIS DRAWING
 THE TECHNICAL MATERIEL CORPORATION claims proprietary right in the material disclosed herein. This drawing is issued in confidence for engineering information only and may not be reproduced or used to manufacture anything shown hereon without permission from THE TECHNICAL MATERIEL CORPORATION to the user. This drawing is loaned for mutual assistance and is subject to recall at any time.

UNLESS OTHERWISE SPECIFIED DIMENSIONS ARE IN INCHES AND INCLUDE CHEMICALLY APPLIED OR PLATED FINISHES	
TOLERANCES ON	
DECIMALS	FRACTIONS
.X ± .05	± 1/64
.XX ± .01	ANGLES
.XXX ± .005	± 0° -30'

MATERIAL
 FINISH

QTY. REQ.	ITEM	PART NO.	DESCRIPTION	SYMBOL
LIST OF MATERIAL				
FINAL APPROVAL * <i>GDL</i> DATE 7/7/77 MECH. DES. DATE ELECT. DES. DATE 7-7-77 CHECKED DATE 7-7-77 DRAWN G.D.L. DATE 5-31-77				
THE TECHNICAL MATERIEL CORP. MAMARONECK, NEW YORK				
3-PHASE BRIDGE RECTIFIERS				
SIZE	CODE	IDENT. NO.	DWG NO.	ISSUE
C	82679		DD 150	Ø
SCALE	1:1			SHEET OF