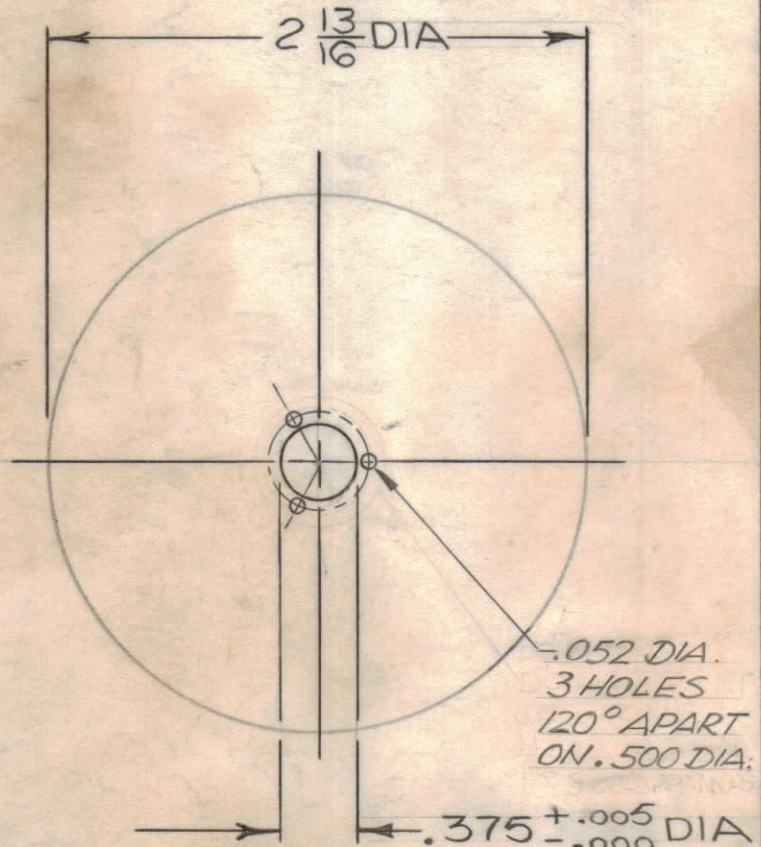


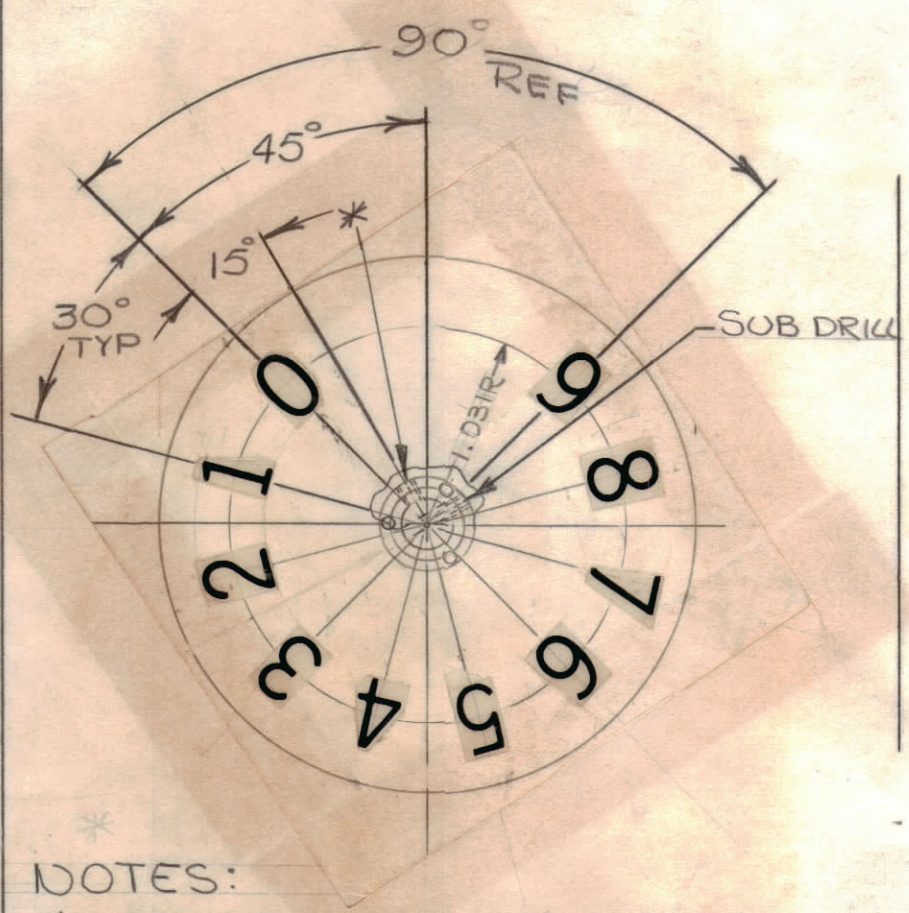
MATERIAL:
 .016 THK MAGNESIUM 525-0



FINISH:
 1. DEGREASE BEFORE PRIMING
 2. S114 ZINC CHROMATE PRIMER
 3. LUSTERLESS BLACK ENAMEL PER FED. STD. #595, COLOR #37038, ALL SURFACES

STEP-1
 DISC, DIAL

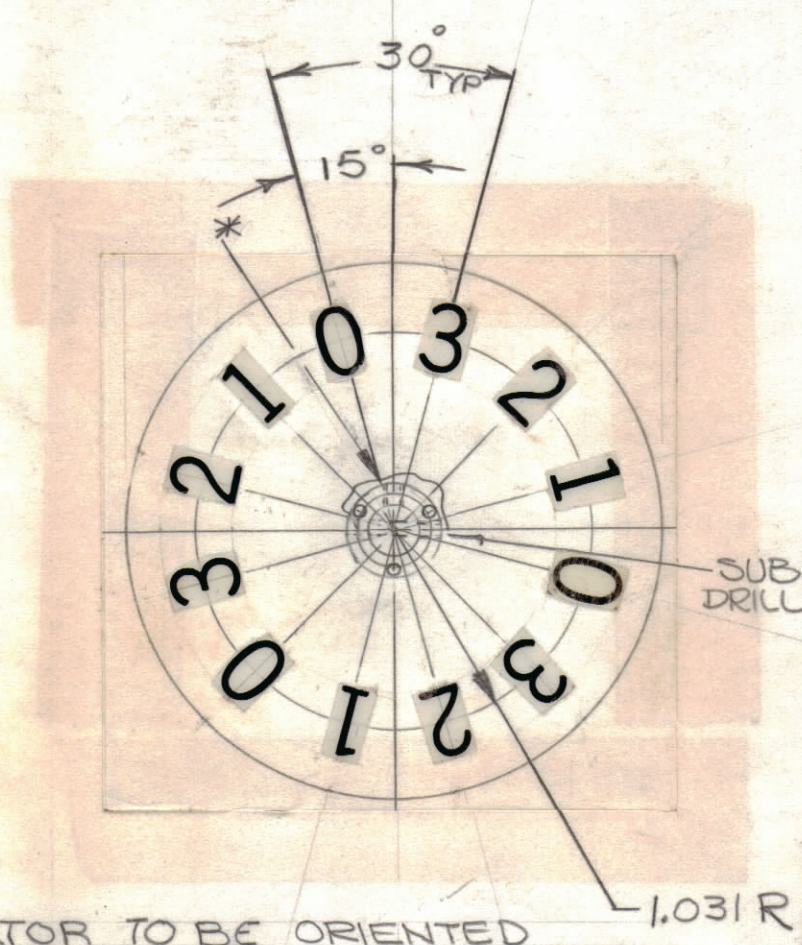
DI 103-1



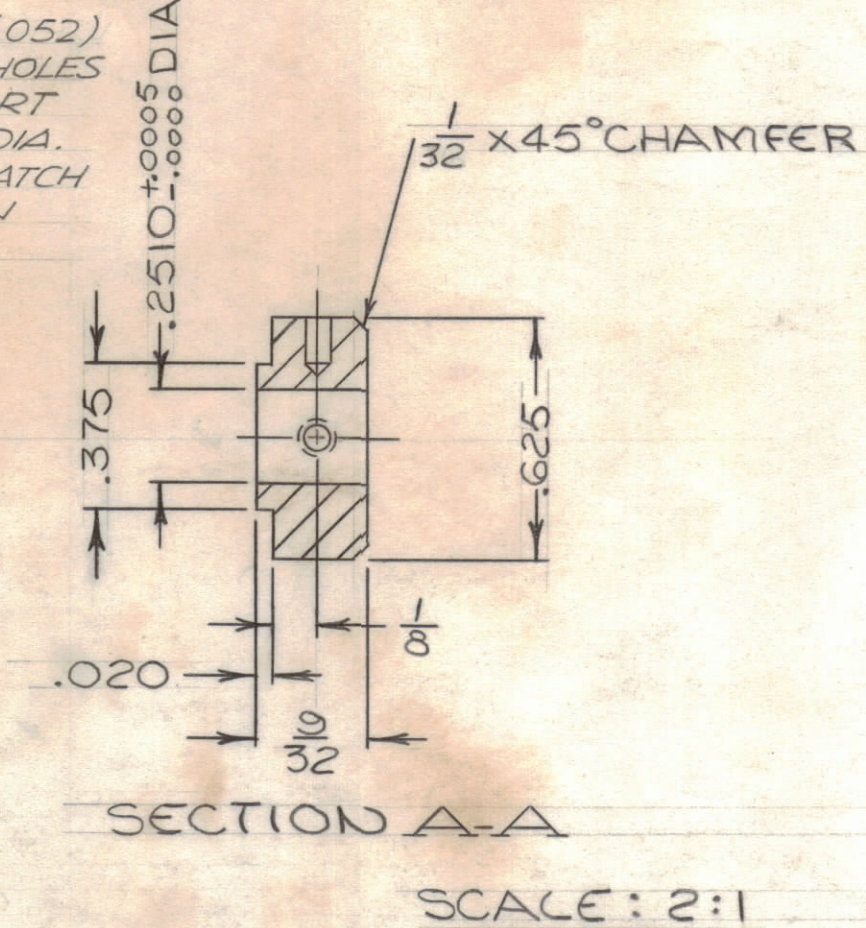
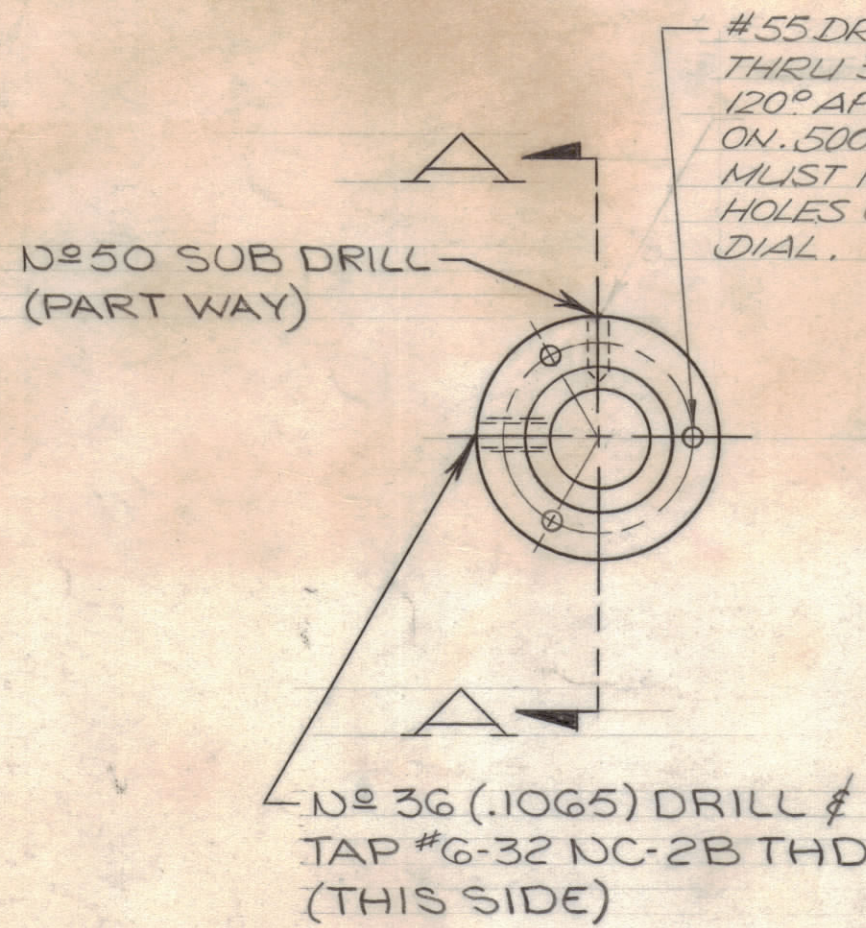
NOTES:
 * 1. SETSCREW OF HUB ON DIAL INDICATOR TO BE ORIENTED IN POSITION SHOWN FOR -1 & 2 (SEE STEP 4)
 2. ALL MARKING TO BE SCREENED 42 POINT SIMPLEX BOLD IN WHITE

STEP-3
 MARKING, DIAL, INDICATOR

DI 103-2



REVISIONS						
ZONE	LTR	DESCRIPTION	DATE	E.M.N.NO	DRAFT	CHKD APPD
	X	EXP. RELEASE	5-7-68			
	X1	ADDED (DO NOT PAINT 1/2 DIA. AREA)	8-1-68			
		ORIGINAL RELEASE FOR PRODUCTION	1-15-69			
	A	ITEM #1 & 3 HOLES, .052 DIA. ADDED	8/29/69	19569	LT.	

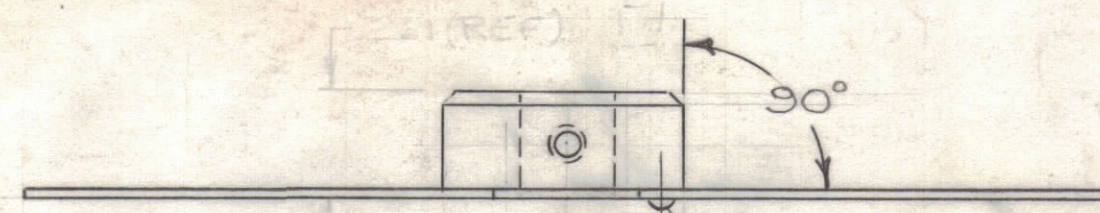


MATERIAL: HH BRASS
 FINISH: S135 NICKEL PLATE

STEP 2
 HUB, DIAL

DI 103-1	5	HFSR-4	
DI 103-2	1	HFSR-4	
QTY / UNIT		MODEL USED ON	ASS'Y NO.
APPLICATION 3-01-451			
CODE	S 401-451		

NOTICE TO PERSONS RECEIVING THIS DRAWING
 THE TECHNICAL MATERIEL CORPORATION claims proprietary right in the material disclosed hereon. This drawing is issued in confidence for engineering information only and may not be reproduced or used to manufacture anything shown hereon without permission from THE TECHNICAL MATERIEL CORPORATION to the user. This drawing is loaned for mutual assistance and is subject to recall at any time.



NOTES:
 1. APPLY H.B. ROLLER RESIN WELD #7004 EFC TO HUB & DISC SURFACES WITH BRUSH (WHERE FLAT CONTACT SURFACE)
 2. ASSEMBLE DISC & HUB AS SHOWN, AFTER DISC COOLING
 NOTE: DISC AND DIAL TO CORE AT 150 FOR 60 MINUTES (SEE STEP 1B)
 3. HUB TO BE CONCENTRIC TO DISC WHEN ASSEMBLED

STEP-4
 DISC & HUB ASS'Y SCALE-2:1

QTY. REQ.	ITEM	PART NO.	DESCRIPTION	SYMBOL
3	1	SC123-00-2	DRIVE SCREW	

POSE LIST OF MATERIAL

FINAL APPROVAL	DATE	THE TECHNICAL MATERIEL CORP. MAMARONECK, NEW YORK
MECH. DES. M. ZETENA	DATE 8-1-68	
ELECT. DES. CHOB	DATE 1-15-69	
CHECKED	DATE 8-1-68	
DRAWN	DATE 5-7-68	DIAL, INDICATOR

MATERIAL	SIZE	CODE IDENT. NO.	DWG. NO.	ISSUE
	C	82679	DI 103-	A
FINISH	SCALE		SHEET	OF