

REVISIONS						
ZONE	LTR	DESCRIPTION	DATE	E.M.N.NO	DRAFT	CHKD APPD
	X	EXP. RELEASE	4/2/69	X	K.H.	F.D.
	XI	NOTE 5 ON OVERALL SPEC REVISED	5/6/69	XI	C.V.	F.D.
	Ø	ORIGINAL RELEASE FOR PRODUCTION	5/1/69	Ø	C.V.	F.D.

OVERALL SPECIFICATIONS OF EQ292 EQUALIZER AND FX292 FILTER

1. dB MEASUREMENTS: ALL dB MEASUREMENTS ARE RELATIVE TO MAXIMUM SIGNAL RESPONSE IN THE PASSBAND
2. -1 dB POINTS: 243.965kHz MAX AND 246.740kHz MIN
3. -75 dB POINTS: NOT LOWER THAN 243.470 kHz AND NOT HIGHER THAN 247.210kHz
4. RIPPLE: 0.5 dB MAX BETWEEN 244.130kHz AND 246.700kHz, 20dB DOWN FROM 480kHz TO 500kHz AND 20dB DOWN FROM 500 kHz TO 5000 kHz
5. ALL SPURIOUS RESPONSES AT LEAST 65 dB DOWN BETWEEN 200kHz AND 300kHz
6. OVERALL MAXIMUM ENVELOPE DELAY DISTORTION TO BE LESS THAN 500 µs BETWEEN 244.180 AND 246.630 kHz

PARTICULAR SPECIFICATIONS

1. TYPE: OUTER, LOWER SIDEBAND EQUALIZER
2. INSERTION LOSS 4 dB MAX
3. SOURCE AND LOAD IMPEDANCE: 500 ± 5% OHMS
4. OPERATING TEMPERATURE: 0 DEGREES TO 65 DEGREES C
5. THIRD ORDER, IN-BAND INTERMODULATION DISTORTION WILL BE AT LEAST 65 dB DOWN FROM THE REFERENCE LEVEL OF EITHER OF TWO EQUAL 30 mv TONES IN THE FILTER PASSBAND, SELECTED IN A MANNER SUCH THAT THE THIRD ORDER-PRODUCT FALLS IN THE FILTER PASSBAND
6. MAXIMUM SIGNAL INPUT: 3 VOLTS rms
7. NON OPERATING TEMP RANGE: -62 DEGREES TO 75 DEGREES C
8. PEAK SHOCK CAPABILITY: 20 G WITHIN A PERIOD OF 10 MILLISECONDS APPLIED ALONG THREE MUTUALLY PERPENDICULAR AXES
9. VIBRATION CAPABILITY: 5Hz TO 50Hz AT AN AMPLITUDE OF 1.3 G

INSERTION LOSS IS DEFINED AS 20 LOG A, WHERE $A = |E_1| / |E_2|$, R_s = SOURCE IMPEDANCE, R_L = LOAD IMPEDANCE SEE SKETCH. E_0 IS FIXED AT ANY FREQUENCY IN THE PASSBAND OF THE FILTER

MARKING PROCESS: AS PER TMC SPECIFICATION S727
 LETTERING: 1/8 HIGH BLACK GOTHIC, LOCATED AS SHOWN

QTY. REQ.	ITEM	PART NO.	DESCRIPTION	SYMBOL
	G. POSE			

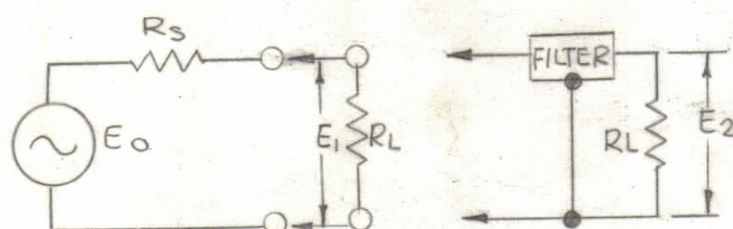
LIST OF MATERIAL

THE TECHNICAL MATERIEL CORP.
 MAMARONECK, NEW YORK

BANDPASS EQUALIZER
 CHANNEL B2

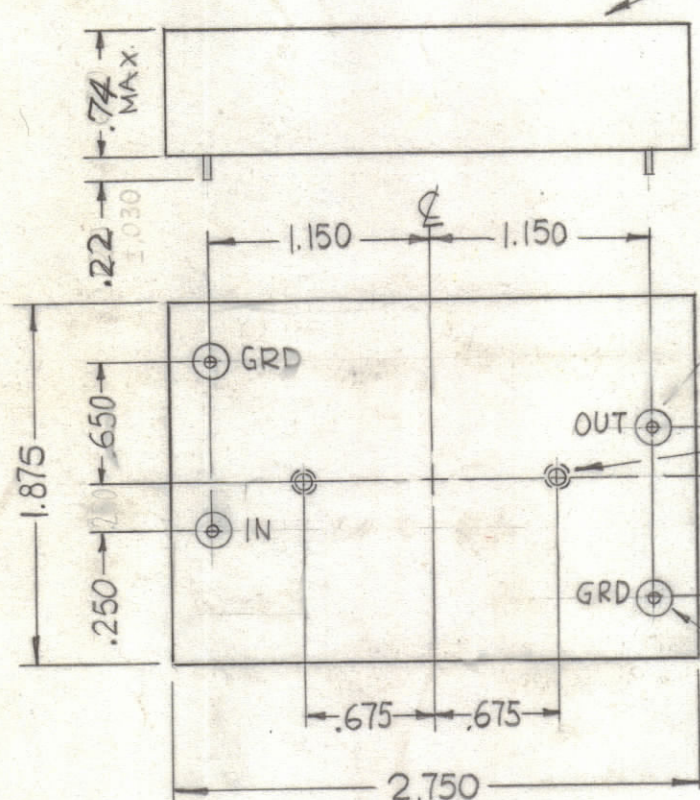
FINAL APPROVAL	DATE
<i>[Signature]</i>	5/8/69
MECH. DES.	DATE
ELECT. DES.	DATE
CHECKED	DATE
<i>[Signature]</i>	4/15/69
DRAWN	DATE
<i>[Signature]</i>	4/2/69

SIZE	CODE IDENT.NO.	DWG NO.	ISSUE
C	82679	EQ 292	Ø
SCALE	1:1	SHEET	OF



LETTERING AND TMC P/N W/LATEST REV LETTER

THE TECHNICAL MATERIEL CORP
 MAMARONECK NEW YORK
 EQ 292



4-40 UNC-2B
 4 FULL THREADS DEEP
 (2 PLACES)

MECHANICAL SPEC

CASE:
 MATERIAL: 24 GA CR STEEL
 DIMENSIONS: AS SHOWN
 FINISH: POWDER BLASTED NICKEL
 MARKING: AS INDICATED
 UNIT TO BE HERMETICALLY SEALED

TERMINALS 4 PL
 STEEL WIRE .040 DIA OR EQUIVALENT
 GLASS OR TEFLON INSULATION

1	MSAR-5	
QTY / UNIT	MODEL USED ON	ASS'Y NO.
APPLICATION		
	CODE	S401-451
	A	

NOTICE TO PERSONS RECEIVING THIS DRAWING
 THE TECHNICAL MATERIEL CORPORATION claims proprietary right in the material disclosed hereon. This drawing is issued in confidence for engineering information only and may not be reproduced or used to manufacture anything shown hereon without permission from THE TECHNICAL MATERIEL CORPORATION to the user. This drawing is loaned for mutual assistance and is subject to recall at any time.

UNLESS OTHERWISE SPECIFIED
 DIMENSIONS ARE IN INCHES
 AND INCLUDE CHEMICALLY APPLIED
 OR PLATED FINISHES

TOLERANCES ON

DECIMALS	FRACTIONS
.X ± .05	± 1/64
.XX ± .01	ANGLES
.XXX ± .005	± 0° -30'

MATERIAL
 FINISH