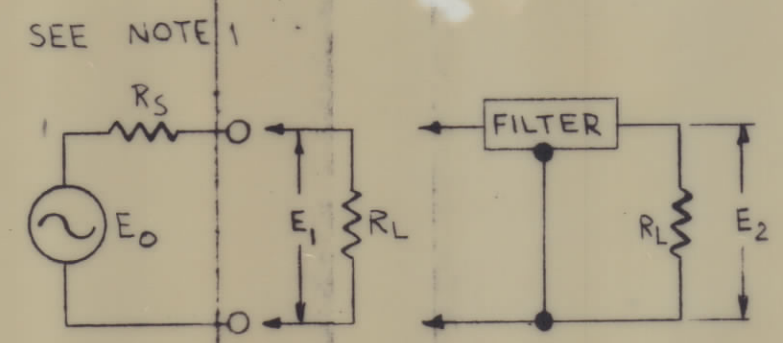
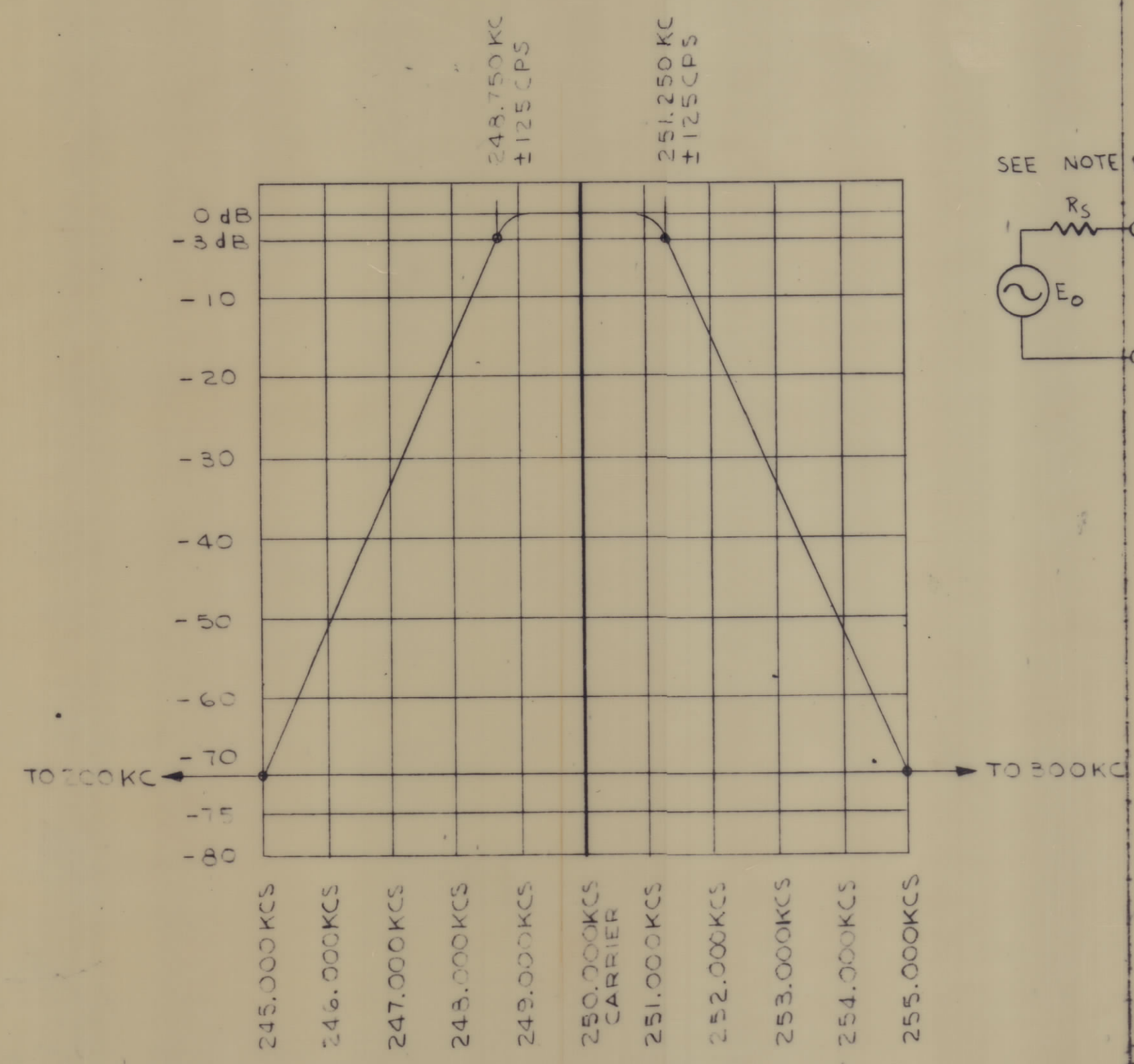


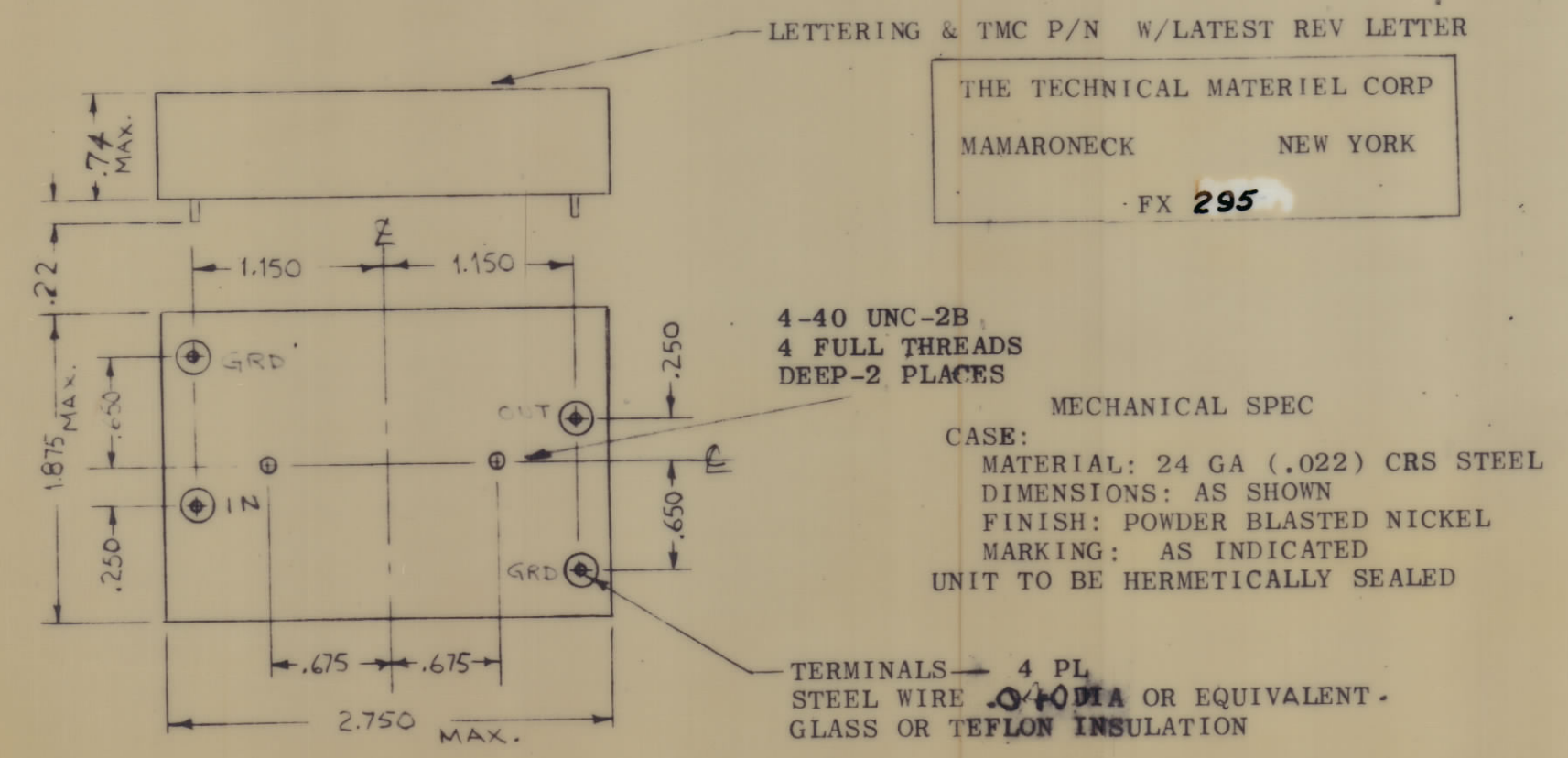
REVISIONS						
SYM	ZONE	DESCRIPTION	DATE	E.M.N.O.	DRAFT	CHKD APPD
Ø		ORIGINAL RELEASE FOR PRODUCTION	6/23/69	Ø	CU	



- SPECIFICATIONS**
1. TYPE: SYMMETRICAL 2.5 KCS
 2. dB MEASUREMENTS: ALL dB MEASUREMENTS ARE RELATIVE TO MAXIMUM SIGNAL RESPONSE IN THE PASSBAND
 3. -3dB POINTS: 248.750 KCS ±125 CYCLES AND 251.250 KCS ±125 CYCLES
 4. -70dB POINTS: NOT LESS THAN 245 KCS AND NOT MORE THAN 255 KCS
 5. INSERTION LOSS 6 dB MAX
 6. SOURCE AND LOAD IMPEDANCE: 500 ±50 OHMS
 7. ALL SPURIOUS RESPONSES AT LEAST 70 dB DOWN FROM 200.00 KC TO 245.000 KC AND 255 KC TO 300 KC; AT LEAST 60 dB DOWN FROM 300 KC TO 5000 KC
 8. OPERATING TEMPERATURE: 0° TO 65°C
 9. THIRD ORDER, IN-BAND INTERMODULATION DISTORTION WILL BE AT LEAST 65 dB DOWN FROM THE REFERENCE LEVEL OF EITHER OF TWO EQUAL 100 mv TONES IN THE FILTER PASSBAND, SELECTED IN A MANNER SUCH THAT THE THIRD ORDER PRODUCT-FALLS IN THE FILTER PASSBAND
 10. MAXIMUM SIGNAL INPUT: 3 VOLTS rms
 11. NON-OPERATING TEMP RANGE: -62°C TO +75°C
 12. PEAK SHOCK CAPABILITY: 20 G WITHIN A PERIOD OF 10 MILLISECONDS, APPLIED ALONG THREE MUTUALLY PERPENDICULAR AXES
 13. VIBRATION CAPABILITY: 5 CPS TO 5q CPS AT AN AMPLITUDE OF 1.3 G
 14. RIPPLE: 0.5 dB MAXIMUM BETWEEN 249.375 KCS & 250.625 KCS
- NOTE 1 INSERTION LOSS IS DEFINED AS 20 LOG A, WHERE $A = \frac{E_1}{E_2}$
 R_s - SOURCE IMPEDANCE E_o IS FIXED AT ANY FREQUENCY IN THE PASSBAND OF THE FILTER

MARKING PROCESS: AS PER TMC SPECIFICATION S727
 LETTERING: 1/8 HIGH BLACK GOTHIC, LOCATED AS SHOWN

LETTERING & TMC P/N W/LATEST REV LETTER
 THE TECHNICAL MATERIEL CORP
 MAMARONECK NEW YORK
 - FX 295



MAXIMUM ALLOWABLE TOLERANCES HAVE BEEN DETERMINED AND ANY DEVIATIONS WILL BE CAUSE FOR REJECTION.

QTY REQ	ITEM	PART NO.	DESCRIPTION	SYMBOL
POSE				
BILL OF MATERIAL				
THE TECHNICAL MATERIEL CORP. MAMARONECK, NEW YORK				
BANDPASS FILTER 2.5KC SYMMETRICAL CHAN.				
UNLESS OTHERWISE SPECIFIED DIMENSIONS ARE IN INCHES TOLERANCES ON FRACTIONS DECIMALS ANGLES ±1/64 ±.005 ±1/2°		FINAL APPROVAL <i>[Signature]</i> DATE 6/23/69	MECH. DES. DATE	
MATERIAL		ELECT. DES. DATE	CHECKED <i>[Signature]</i> DATE 6/21/69	
FINISH		DRAWN G. EVANGELIST DATE 6.18.69	APPROVED FOR BUSHIPS	
CONTRACT NO.		CODE 82679	SIZE C	DWG. NO. FX 295
		SCALE	SHEET OF	