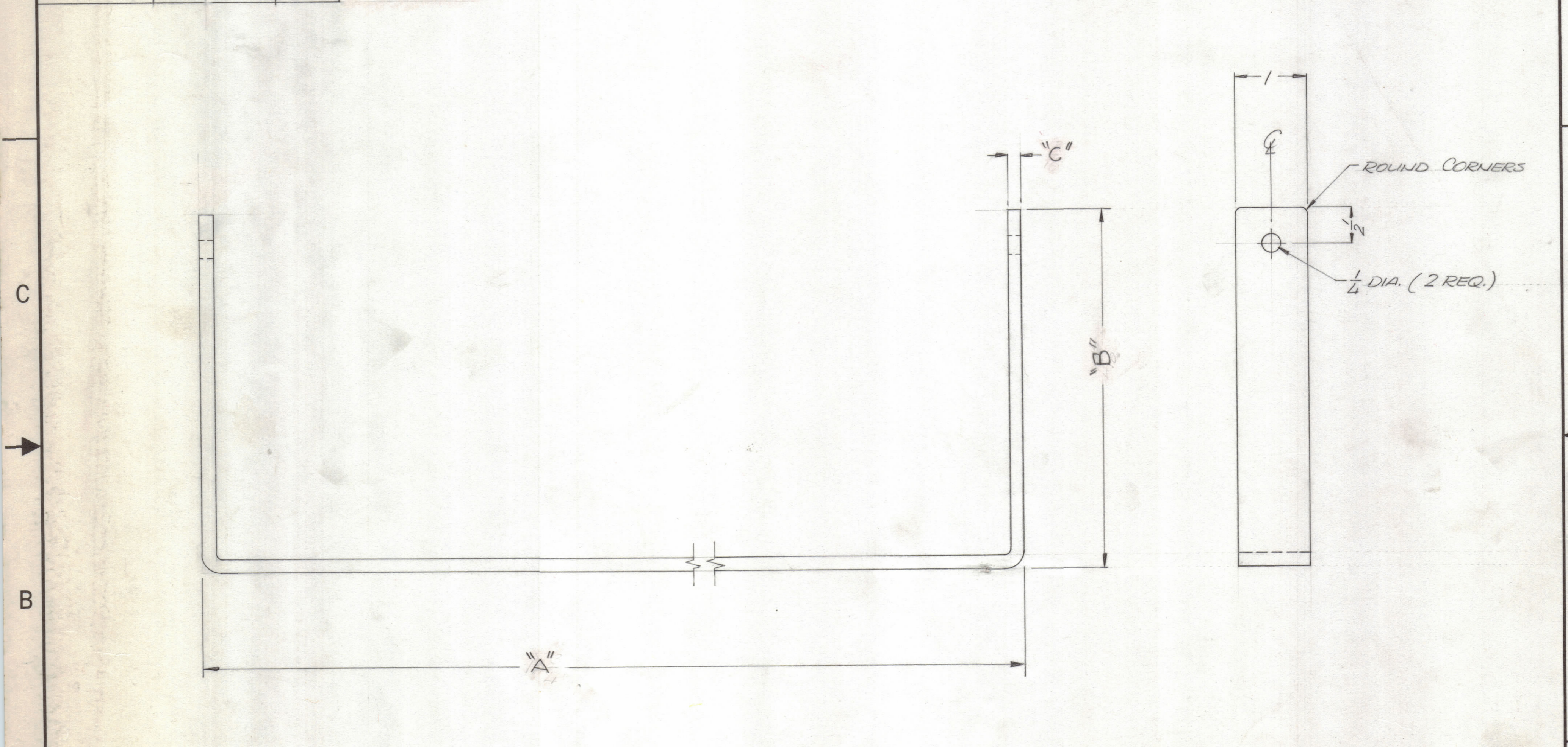


ENGINEERING SKETCH — NOT FOR PRODUCTION

TMC PART NO.	DIMENSION		
	"A"	"B"	"C"
HA135-1	14-3/4	4 15/16	3/16
HA135-2	16 13/16	6 1/2	7/32

REVISIONS						
ZONE	LTR	DESCRIPTION	DATE	E.M.N.NO	DRAFT	CHKD APPD
	X					
	XI	CHART & HA135-2 ADD.	12-31-74			
	Ø	ORIGINAL RELEASE FOR PRODUCTION	6/16/75		a	



- UNLESS OTHERWISE SPECIFIED:
- USE MATERIAL THICKNESS FOR MAXIMUM RADIUS ON ALL BENDS.
 - ALL ANGULAR BENDS 90 DEGREES.
 - REMOVE ALL BURRS AND SHARP EDGES.
 - MOUNT INSERTS AFTER FINISHING.

QTY / UNIT	MODEL USED ON	ASS'Y NO.
APPLICATION		
CODE		

NOTICE TO PERSONS RECEIVING THIS DRAWING
 THE TECHNICAL MATERIEL CORPORATION claims proprietary right in the material disclosed hereon. This drawing is issued in confidence for engineering information only and may not be reproduced or used to manufacture anything shown hereon without permission from THE TECHNICAL MATERIEL CORPORATION to the user. This drawing is loaned for mutual assistance and is subject to recall at any time.

UNLESS OTHERWISE SPECIFIED DIMENSIONS ARE IN INCHES AND INCLUDE CHEMICALLY APPLIED OR PLATED FINISHES

TOLERANCES ON

DECIMALS	FRACTIONS
.X ± .05	± 1/64
.XX ± .01	ANGLES
.XXX ± .005	± 0° .30'

MATERIAL
C.R. STEEL

FINISH
BRIGHT NICKEL PLT.

QTY. REQ.	ITEM	PART NO.	DESCRIPTION	SYMBOL
LIST OF MATERIAL				
FINAL APPROVAL		DATE	THE TECHNICAL MATERIEL CORP.	
MECH. DES.		DATE	MAMARONECK, NEW YORK	
ELECT. DES.		DATE	HANDLE, CARRYING	
CHECKED		DATE		
DRAWN		DATE		
SIZE			CODE IDENT.NO.	DWG NO.
C			82679	HA135 -
SCALE 1:1			SHEET	OF