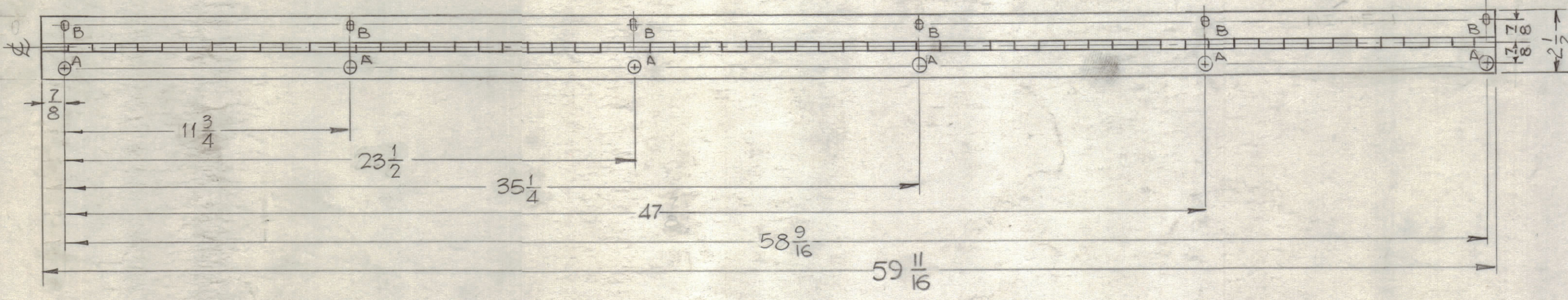
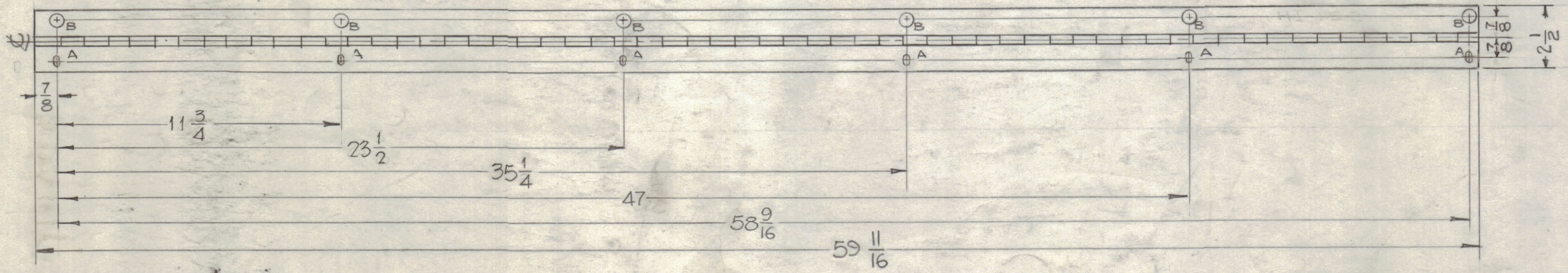


HOLE	DESCRIPTION	REQ.D
A	13/64 DIA.	6
B	7/32 x 3/8 SLOT	6

REVISIONS							
ZONE	SYM	DESCRIPTION	DATE	E.M.N. NO.	DRAFT	CHKD	APPD
E7,B7	A	59 11/16 DIM LINE CORRECTED	4-25-63	8892	gus	gus	
H7,B7, C2,F2	B	DET-1 HOLE 'B' WAS 1/16 x 1/32, DET-2 HOLE 'A' WAS 1/16 x 1/32. DET-(1)-(2) 7/8 DIM. WAS 13/16	8-5-63	9713	AK	gus	



HI-115-1 (LEFT)
(1 REQ.)



HI-115-2 (RIGHT)
(1 REQ.)

HOLE	DESCRIPTION	REQ.D
B	1/4" DIA	6
A	7/32 x 3/8 SLOT	6

PIN:
MATERIAL: STAINLESS STEEL
DIA: .125
SWAGING: BOTH ENDS HALF SWAGED

FINISH:
S404 YELLOW IRIDITE
3114 ZINC CHROMATE PRIMER
3115 SMOOTH GRAY ENAMEL

NOTES

QTY/UNIT	MODEL USED ON	ASS'Y. NO.
SCALE	CODE	
THE CONTENTS OF THIS DRAWING ARE THE EXCLUSIVE PROPERTY OF THE TECHNICAL MATERIEL CORP. ITS UNAUTHORIZED USE OR REPRODUCTION IN WHOLE OR IN PART IS STRICTLY FORBIDDEN.		

6	2	FS-109-3	RING, STUD RETAINING	
6	1	FS-110-2	STUD, SLOTTED HEAD	
REQ'D.	ITEM	PART NUMBER	DESCRIPTION	SYMBOL
F. BUDETTI LIST OF MATERIAL				
MATERIAL ALUMINUM 5052-H34 GUAGE .062			THE TECHNICAL MATERIEL CORP. MAMARONECK, NEW YORK	
FINISH SEE NOTE			TITLE HINGE, LEFT & RIGHT	
DRAWN G.D.L		DATE 3-5-63	FINAL APPROVAL <i>BP</i>	
CHECKED aa		DATE	HI-115	
ELECT. DES. <i>gus</i>		DATE	B	
MECH. DES.		DATE	SHEET	
DECIMALS X ± .05 XX ± .01 XXX ± .005		TOLERANCES		FRACTIONS ± 1/64 ANGLES ± 0° 30'

REF: HOMER D. BRONSON CO.

HI-115
B