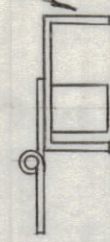


METAL STAMP TMC PART NO. (HI 124-) 1/8 HIGH GOTHIC W/LATEST REV. LETTER.

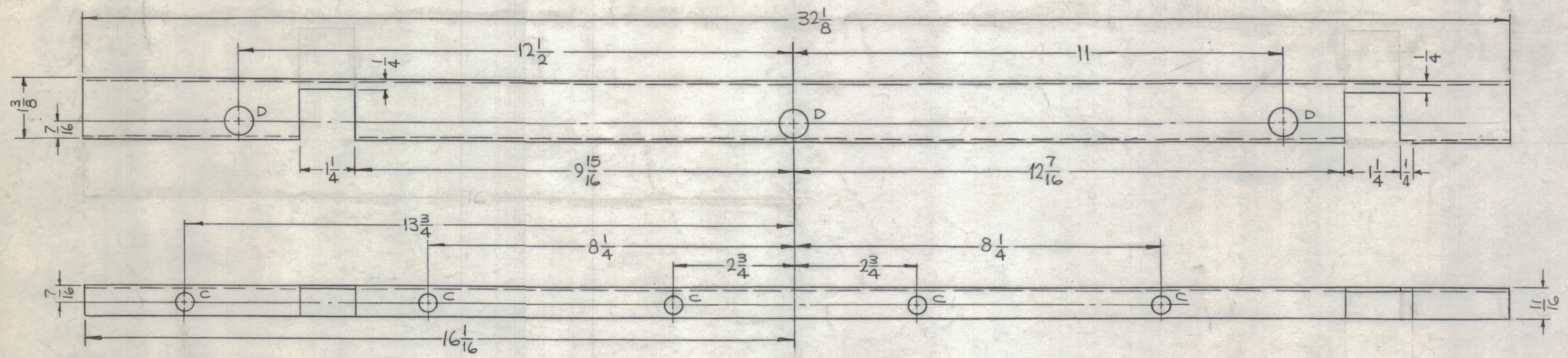
ASS'Y



SPOT WELD HINGE & BRACKET AS SHOWN

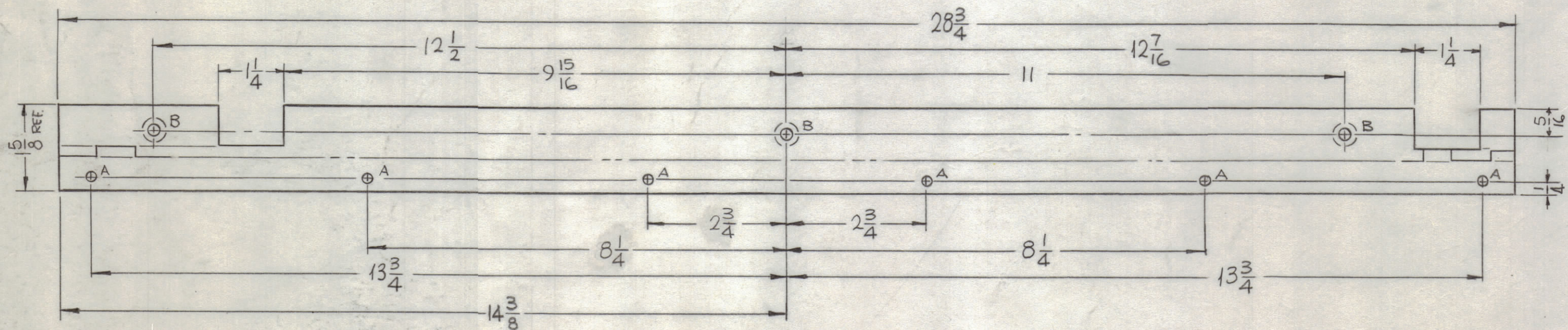
REVISIONS						
ZONE	SYM	DESCRIPTION	DATE	E.M.N. NO.	DRAFT	CHKD APPD
X1		REVISED & REDRAWN FROM 2 SIZE	4-1-65	X1	SRG	
X2		FINISH WAS FSN 595 CHIP NO 24664	4-6-65	X2	SRG	
X3		11/16 WAS .680, MATL REVISED	6-23-66	X3	MLL	JTB MC
Ø		ORIGINAL RELEASE FOR PRODUCTION	9/30/66	Ø	CV	

MAT'L ~ 1/16 CRS STEEL

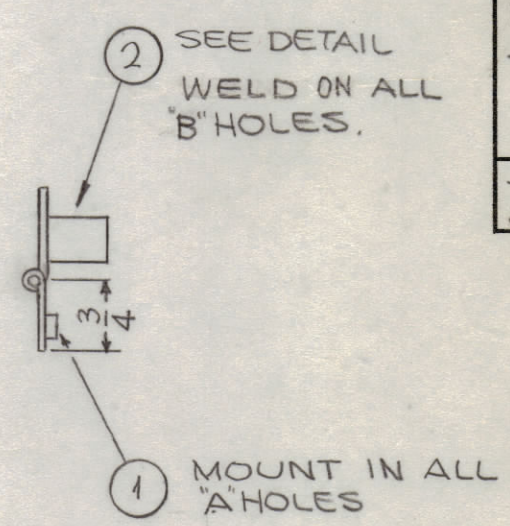


BRACKET

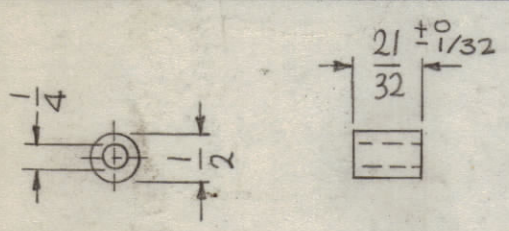
MAT'L ~ 1-3/4 X 1/4 KNOCKLE .047 CRS 3/32 DIA. PIN



HINGE



HI124 X3



MAT'L ~ STEEL, COLD ROLLED  
ITEM #2 DETAIL  
3 REQ.

HOLE	DESCRIPTION	REQ
A	.191-.194 DIA.	6
B	DR. 1/4 DIA. C'SINK 82° X.390 DIA AFTER ASSEMBLY OF ITEM 2	3
C	3/8 DIA.	5
D	5/8 DIA.	3

- FINISH NOTES:
- S371 - DEGREASE
  - S114 - ZINC CHROMATE PRIMER)
  - S115 - SMOOTH GRAY ENAMEL )

- UNLESS OTHERWISE SPECIFIED:
- USE MATERIAL THICKNESS FOR MAXIMUM RADIUS ON ALL BENDS
  - ALL ANGULAR BENDS 90 DEGREES
  - REMOVE ALL BURRS AND SHARP EDGES
  - MOUNT INSERTS AFTER FINISHING

1	GPTHOKLF	AM124
Q'TY./UNIT	MODEL USED ON	ASS'Y. NO.
SCALE 1/2:1	CODE A	

THE CONTENTS OF THIS DRAWING ARE THE EXCLUSIVE PROPERTY OF THE TECHNICAL MATERIEL CORP. ITS UNAUTHORIZED USE OR REPRODUCTION IN WHOLE OR IN PART IS STRICTLY FORBIDDEN.

6	1	NT129-632-3	NUT, PLAIN, SPLINE	A
REQ'D.	ITEM	PART NUMBER	DESCRIPTION	SYMBOL
F. BUDETTI LIST OF MATERIAL				
MATERIAL		SEE DWG		
FINISH		SEE NOTES		
THE TECHNICAL MATERIEL CORP.		MAMARONECK, NEW YORK		
TITLE		HINGE, PANEL		
DRAWN	SRG	DATE	3-30-65	FINAL APPROVAL
CHECKED	JTB	DATE	12-21-65	
ELECT. DES.		DATE		
MECH. DES.	MLL	DATE		
DECIMALS	.X ± .05	FRACTIONS	± 1/64	
	.XX ± .01	TOLERANCES	ANGLES ± 0° 30'	
	.XXX ± .005			
SHEET		HI124		
REV. LTR.		Ø		