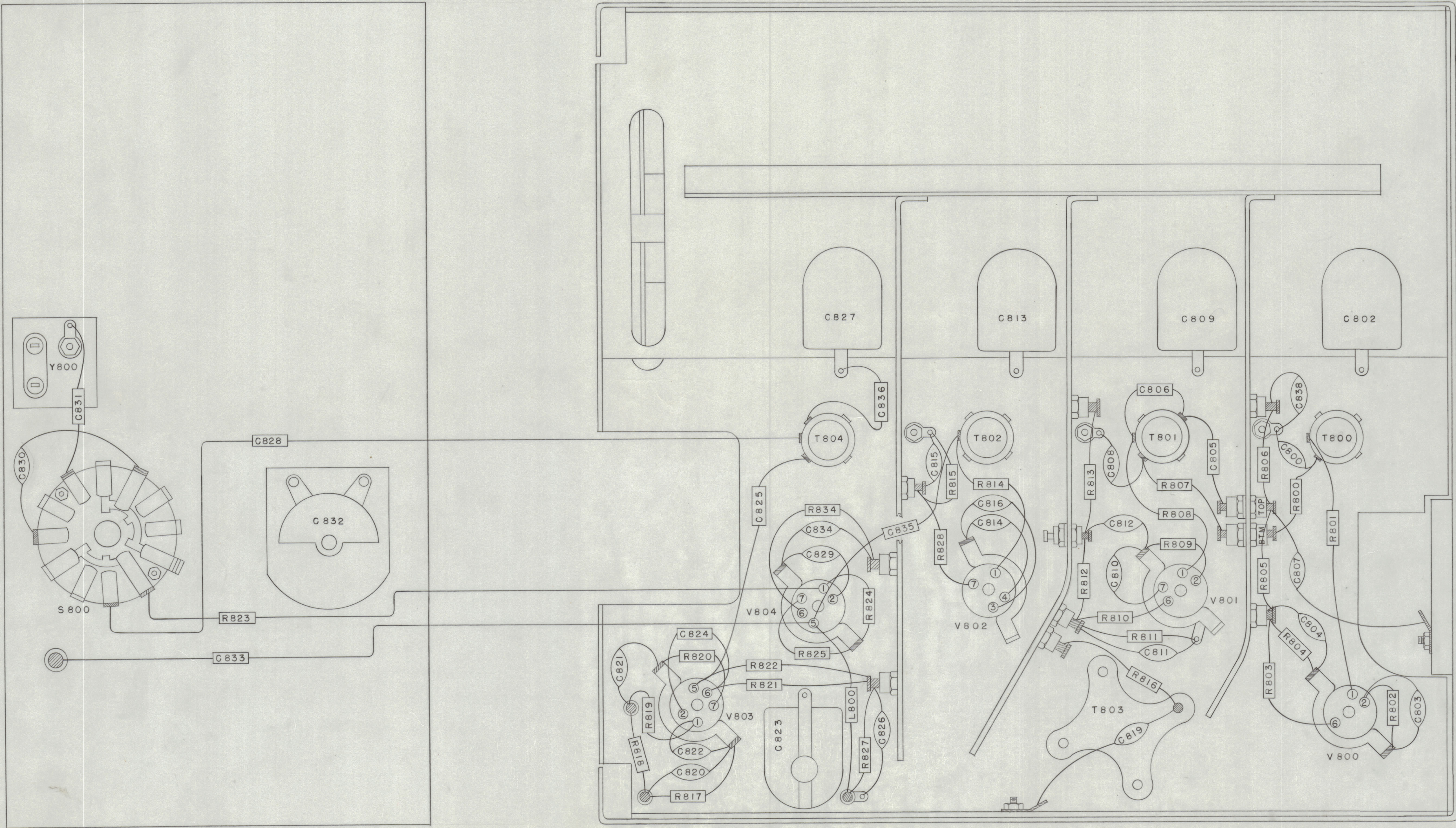


IF IT IS FOUND DESIRABLE TO CHANGE ANY TOLERANCE OR OTHER DETAIL SPECIFIED ON THIS DRAWING NOTIFY THE PURCHASER PROMPTLY.

MAXIMUM ALLOWABLE TOLERANCES HAVE BEEN DETERMINED AND DEVIATIONS WILL BE CAUSE FOR REJECTION. REMOVE ALL BURRS AND SHARP EDGES



NOTICE TO PERSONS RECEIVING THIS DRAWING
 THE TECHNICAL MATERIEL CORPORATION claims proprietary right in the material disclosed herein. This drawing is issued in confidence for engineering information only and may not be reproduced or used to manufacture any articles shown herein without permission from THE TECHNICAL MATERIEL CORPORATION to the user. This drawing is loaned for mutual assistance and is subject to recall at any time.

Property of:
 THE TECHNICAL MATERIEL CORPORATION
 MAMARONECK, NEW YORK

11-D-1

ISSUE	ITEM	CHANGED FROM	DATE	CN. NO.	DRAFTS	CHECKER	ENG. APP.
TOLERANCES							
ALL OTHERS		DEC. DIM. ±		DRILL, PUNCH, COMMERCIAL STOCK			
		FRAC. DIM. ±		SIZES AND MANUFACTURERS			
		ANGULAR DIM. ±		TOLERANCES ARE NOT INCLUDED.			

MODEL	PROJECT NO.	ASSY. NO.	DATE
USED ON			

REQ. ITEM	PART NO.	DESCRIPTION	SYMBOL
THE TECHNICAL MATERIEL CORP. MAMARONECK, NEW YORK			
STOCK SIZE		BOTTOM VIEW MODEL FFRD-8	
MATERIAL		CDD 6-30-53	
WEIGHT PER PC.		DRAWN ELEC. DES. APP. MECH. DES. APP.	
TYPE & TEMPER		DRD 6-23-53 DRD 6-24-53	
HEAT TREAT. SPEC.		CHECKED FINAL APPROVAL	
FINISH & SPEC. NO.		11-D-115	