

NOTE: MTG. BRACKET (SEE CHART)

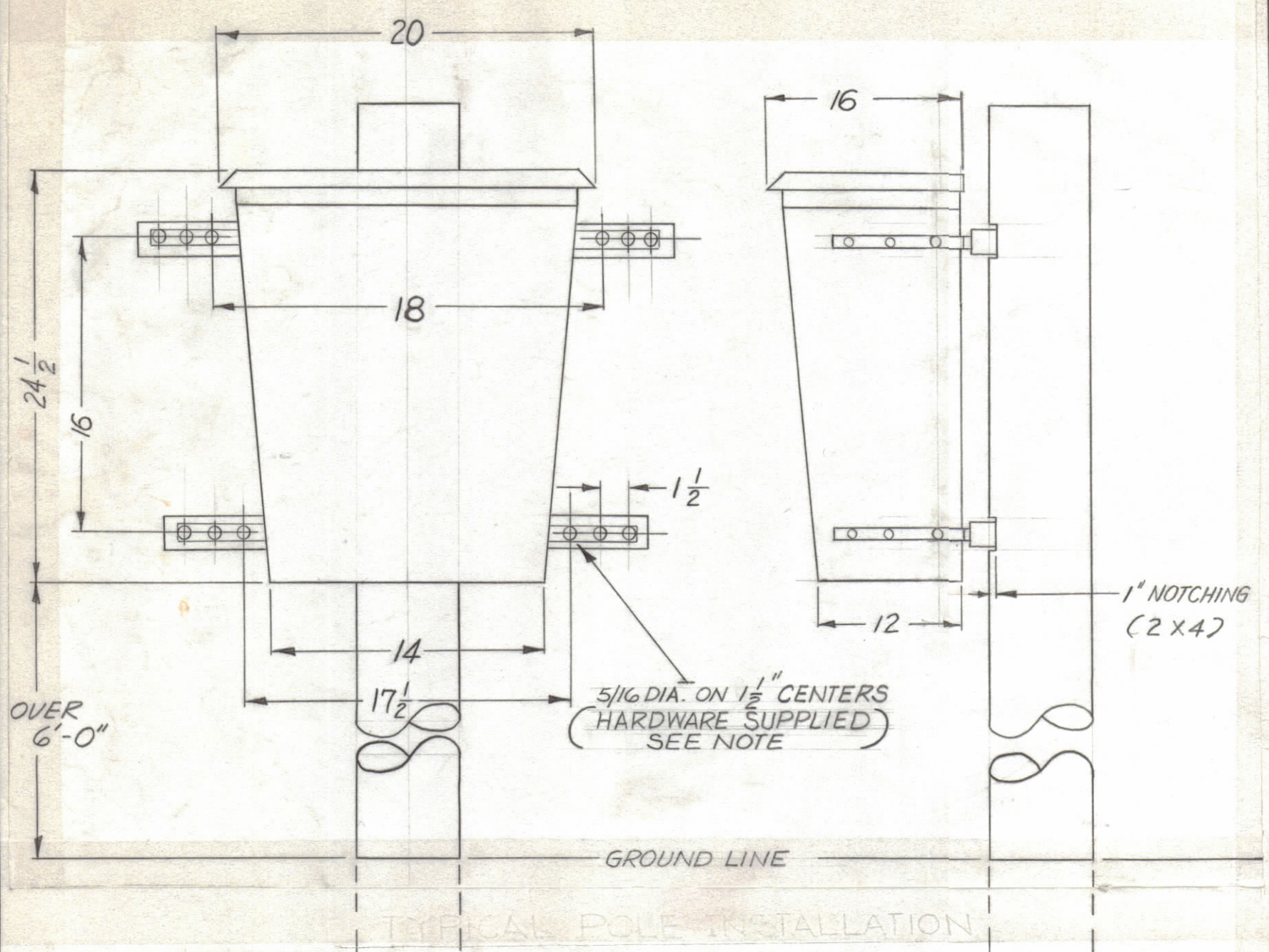
TMC PART NO.	DESCRIPTION	REQ'D
SC-112-2	LAG BOLTS	12
FW25HBN	FLAT WASHERS	12
FP-156	MTG. BRACKETS	4

NOTE: MTG. HARDWARE SUPPLIED BY TMC. BY TMC (SEE CHART)

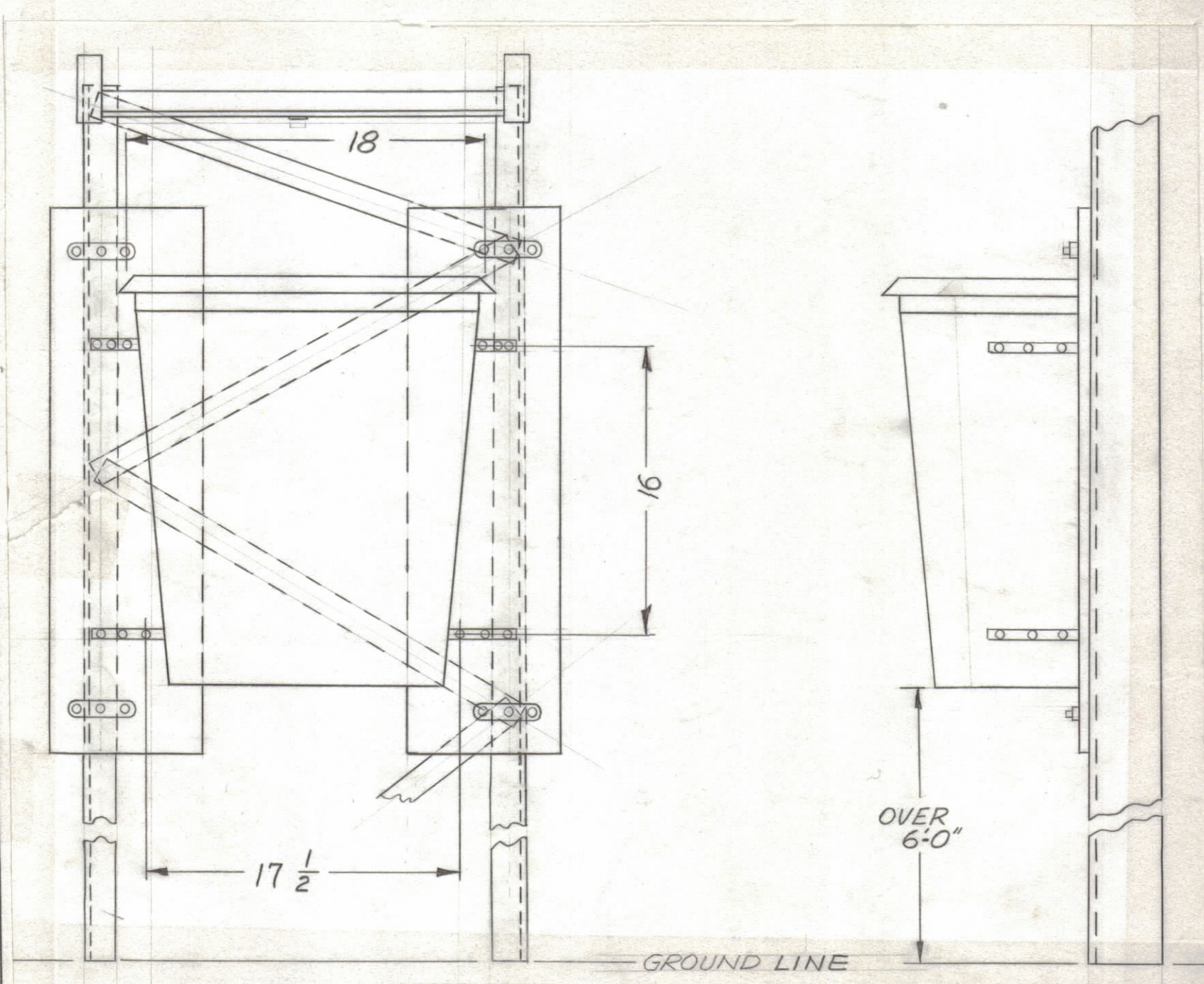
TMC PART NO.	DESCRIPTION	REQ'D
SC-112-2	LAG BOLTS	12
FW25HBN	FLAT WASHERS	12
FP-156	MTG BRACKETS	4

NOTE: MTG. HARDWARE SUPPLIED BY TMC. EA. LAG BOLTS (SC-112-2) & 12 (SEE CHART) (FW25HBN) SUPPLIED BY TMC.

REVISIONS							
ZONE	SYM	DESCRIPTION	DATE	E.M.N. NO.	DRAFT	CHKD	APPD
-	H	REVISED & REDRAWN (WAS SIZE #2)	10/10/63	8143	MD	MT	WJ

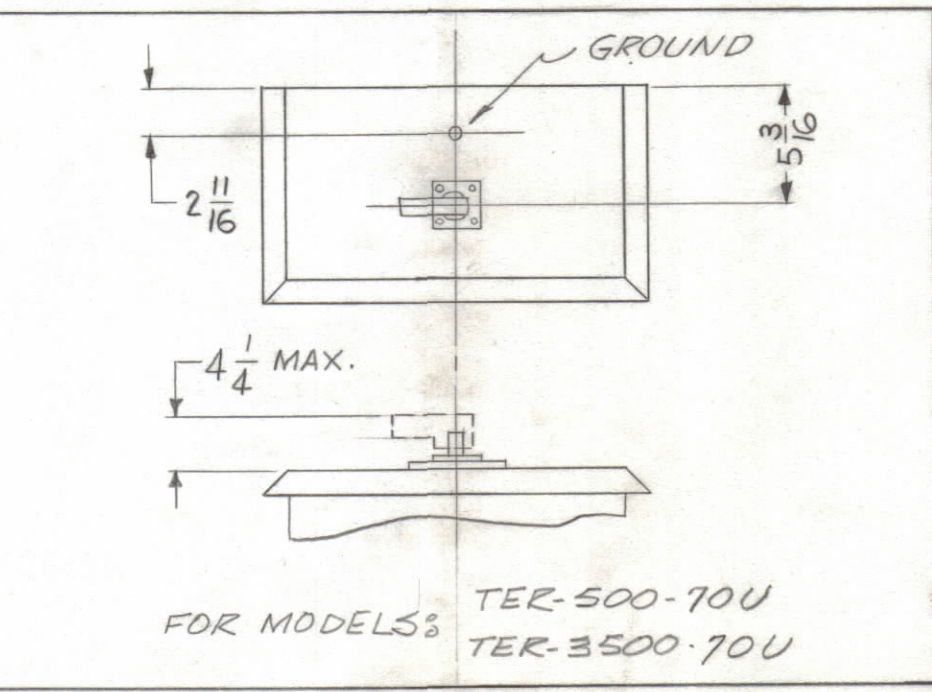
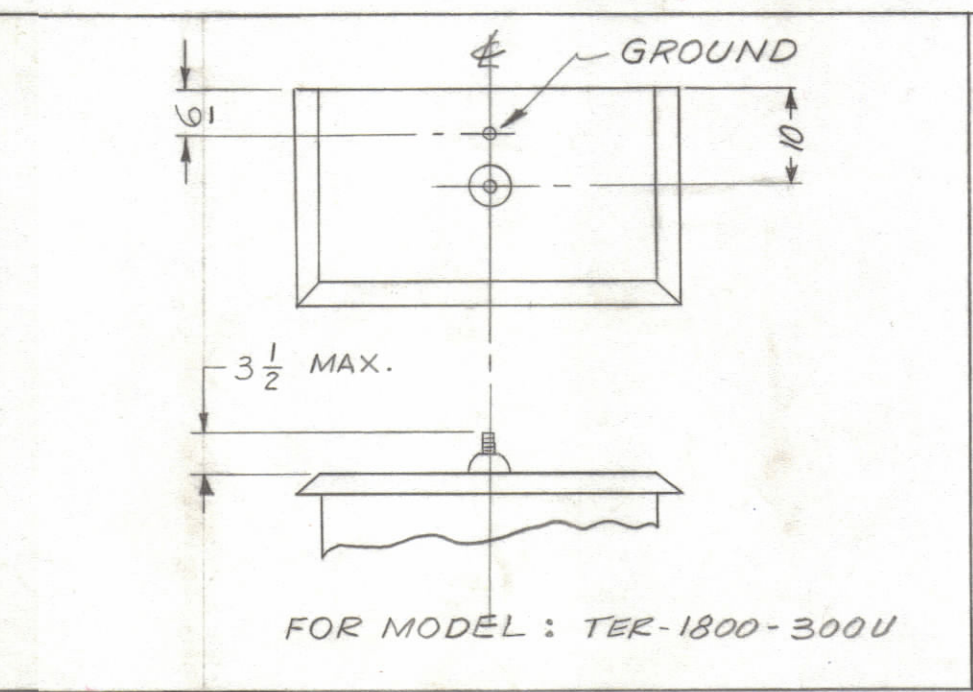
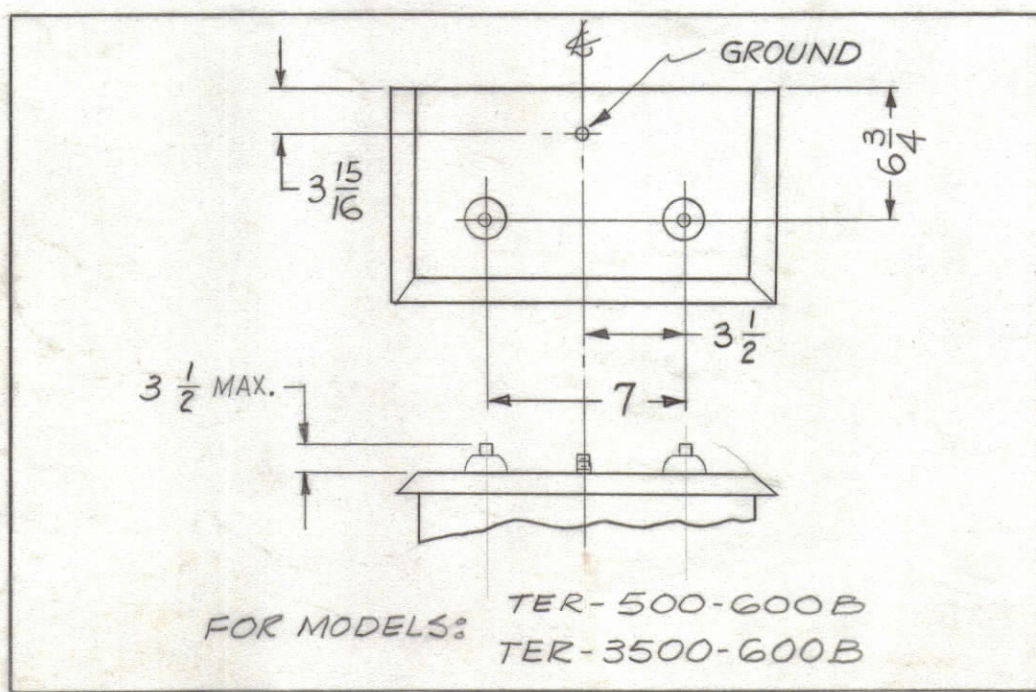


TYPICAL POLE INSTALLATION



TYPICAL TOWER INSTALLATION

TERMINATION DETAILS



QTY./UNIT	MODEL USED ON	ASSY. NO.
	TER-3500-600B	
	TER-3500-70U	
	TER-1800-300U	
	TER-500-600B	
	TER-500-70U	

THE CONTENTS OF THIS DRAWING ARE THE EXCLUSIVE PROPERTY OF THE TECHNICAL MATERIEL CORP. ITS UNAUTHORIZED USE OR REPRODUCTION IN WHOLE OR IN PART IS STRICTLY FORBIDDEN.

REQ'D.	ITEM	PART NUMBER	DESCRIPTION	SYMBOL
LIST OF MATERIAL				
MATERIAL			THE TECHNICAL MATERIEL CORP. MAMARONECK, NEW YORK	
FINISH			TITLE INSTALLATION DETAILS TER-500, TER-1800, TER-3500	
UNLESS OTHERWISE SPECIFIED DIMENSIONS ARE IN INCHES AND INCLUDE CHEMICALLY APPLIED OR PLATED FINISHES			DRAWN: <i>Dravle</i> CHECKED: <i>M. Ventilla</i>	DATE: 10-10-63 DATE: 10-14-63
DECIMALS X ± .05 XX ± .01 XXX ± .005			FINAL APPROVAL: <i>BP</i> DATE: 10-14-63 SHEET: ID-166 H	
TOLERANCES ± 1/64 ANGLES ± 0° 30'			ELECT. DES. MECH. DES.	

NOTES

ID-166 H