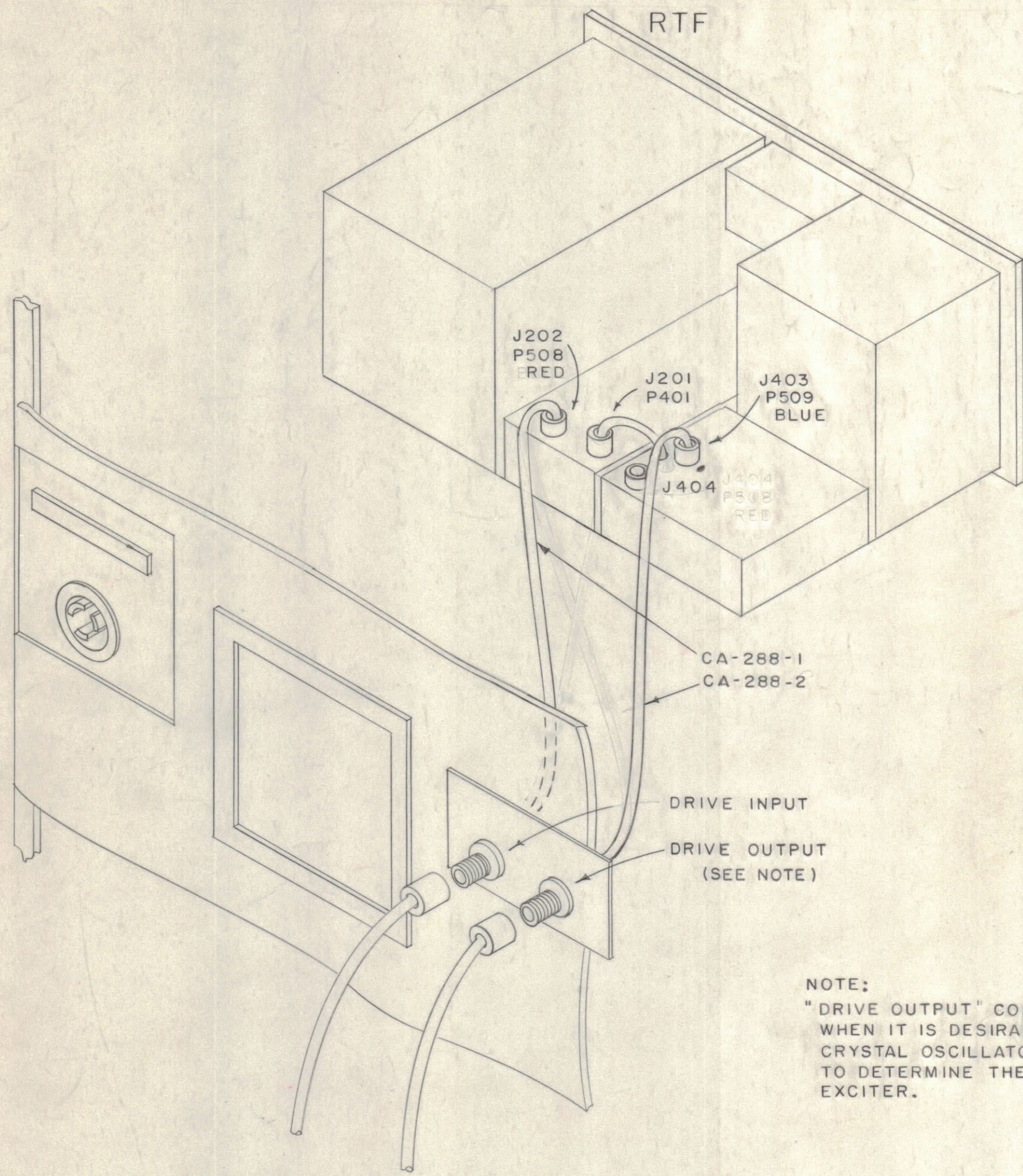


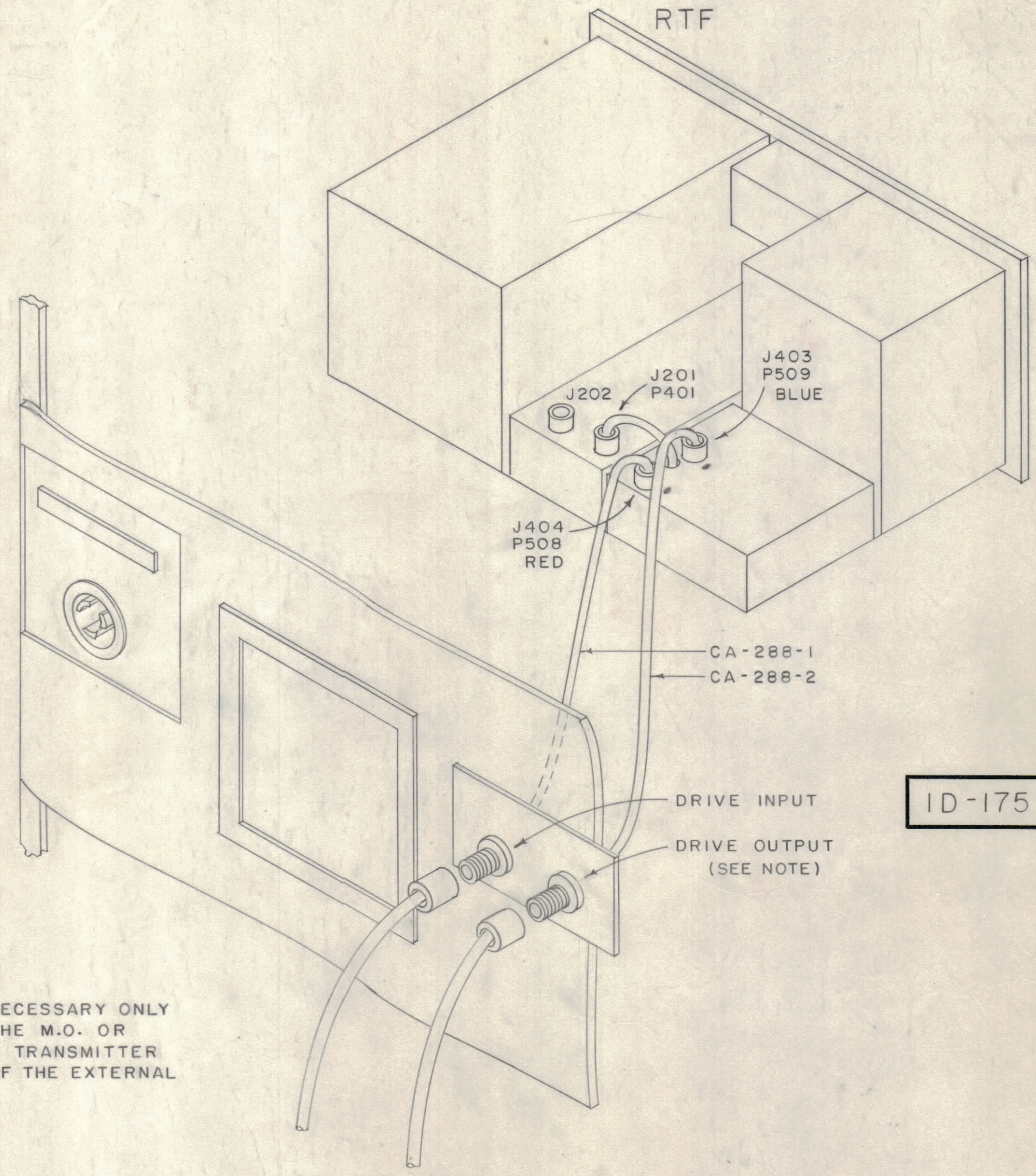
IF IT IS FOUND DESIRABLE TO CHANGE ANY TOLERANCE OR OTHER DETAIL SPECIFIED ON THIS DRAWING NOTIFY THE PURCHASER PROMPTLY.

MAXIMUM ALLOWABLE TOLERANCES HAVE BEEN DETERMINED AND DEVIATIONS WILL BE CAUSE FOR REJECTION. REMOVE ALL BURRS AND SHARP EDGES



TO  
EXTERNAL SINGLE SIDEBAND EXCITER

FOR INTERNAL CABLE CONNECTIONS SEE  
CABLING DIAGRAM (ID-175) IN SEC. 3



TO  
EXTERNAL FREQUENCY SHIFT EXCITER

FOR INTERNAL CABLE CONNECTIONS SEE  
CABLING DIAGRAM (ID-175) IN SEC. 3

NOTE:  
"DRIVE OUTPUT" CONNECTION IS NECESSARY ONLY WHEN IT IS DESIRABLE TO USE THE M.O. OR CRYSTAL OSCILLATOR WITHIN THE TRANSMITTER TO DETERMINE THE FREQUENCY OF THE EXTERNAL EXCITER.

ID-175

**NOTICE TO PERSONS RECEIVING THIS DRAWING**

THE TECHNICAL MATERIEL CORPORATION claims proprietary right in the material disclosed herein. This drawing is issued in confidence for engineering information only and may not be reproduced or used to manufacture anything shown herein without permission from THE TECHNICAL MATERIEL CORPORATION to the user. This drawing is loaned for mutual assistance and is subject to recall at any time.

Property of:  
THE TECHNICAL MATERIEL CORPORATION  
MAMARONECK, NEW YORK

ISSUE	ITEM	CHANGED FROM	DATE	CN. NO.	DRAFTS	CHECKER	ENG. APP.
TOLERANCES		SCALE:					
ALL OTHERS	DEC. DIM. ± FRAC. DIM. ± ANGULAR DIM. ±	DRILL, PUNCH, COMMERCIAL STOCK SIZES AND MANUFACTURERS TOLERANCES ARE NOT INCLUDED.					

REQ PER UNIT	MODEL	PROJECT NO.	ASS'Y. NO.	DATE
	GPT-750	271		6-14-56
USED ON				

REQ. ITEM	PART NO.	DESCRIPTION	SYMBOL
THE TECHNICAL MATERIEL CORP. MAMARONECK, NEW YORK			
STOCK SIZE			
CABLING DIAGRAM, MODEL GPT-750 WITH EXTERNAL DRIVE			
MATERIAL		WEIGHT PER PC.	
TYPE & TEMPER		CDD 6-14-56	
HEAT TREAT. SPEC.		DRAWN	
FINISH & SPEC. NO.		ELEC. DES. APP. MECH. DES. APP.	
		CHECKED	
		FINAL APPROVAL	
		ID-175	