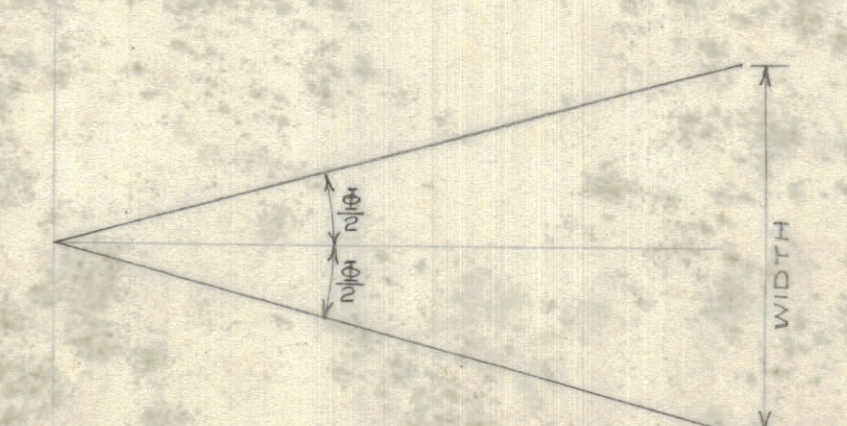
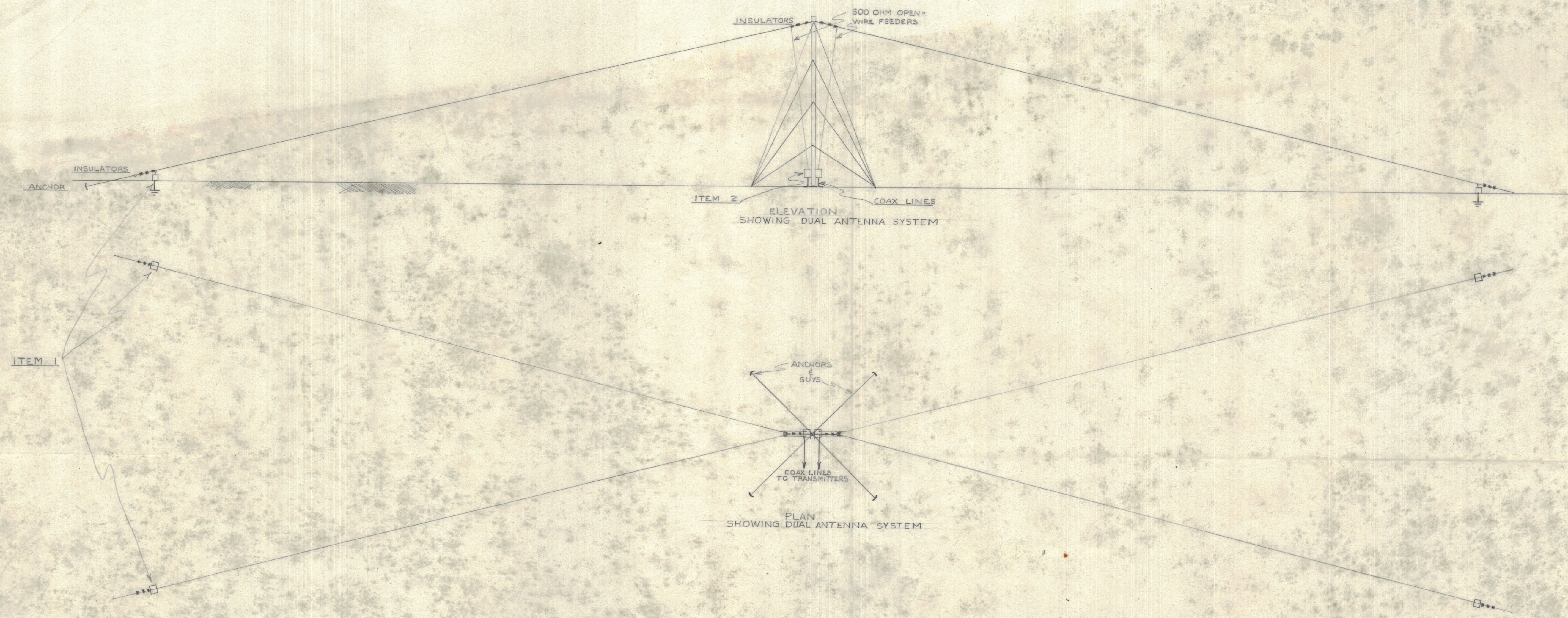


IF IT IS FOUND DESIRABLE TO CHANGE ANY TOLERANCE OR OTHER DETAIL SPECIFIED ON THIS DRAWING NOTIFY THE PURCHASER PROMPTLY.

MAXIMUM ALLOWABLE TOLERANCES HAVE BEEN DETERMINED AND DEVIATIONS WILL BE CAUSE FOR REJECTION. REMOVE ALL BURRS AND SHARP EDGES.

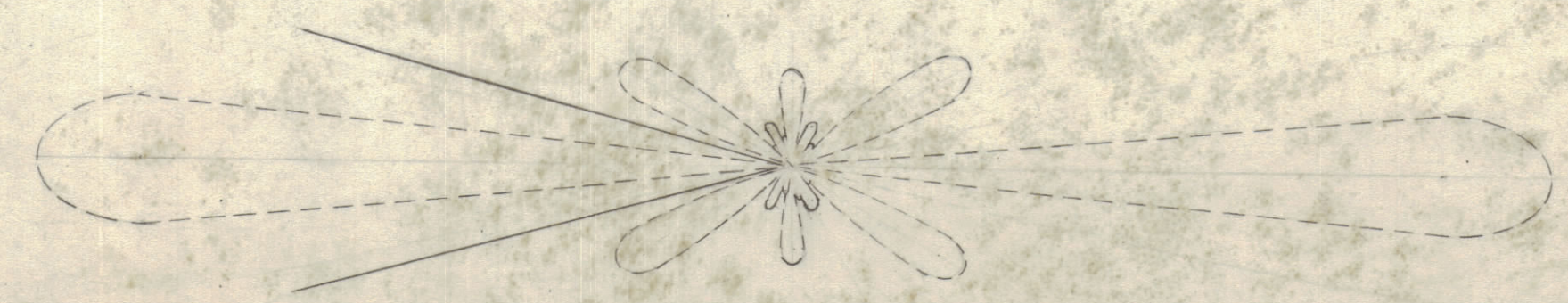
REQ.	ITEM	PART NO.	DESCRIPTION	SYMBOL
------	------	----------	-------------	--------

ISSUE	ITEM	CHANGED FROM	DATE	EN. NO.	DRAFTS	CHECKER	ENS. APP.
-------	------	--------------	------	---------	--------	---------	-----------

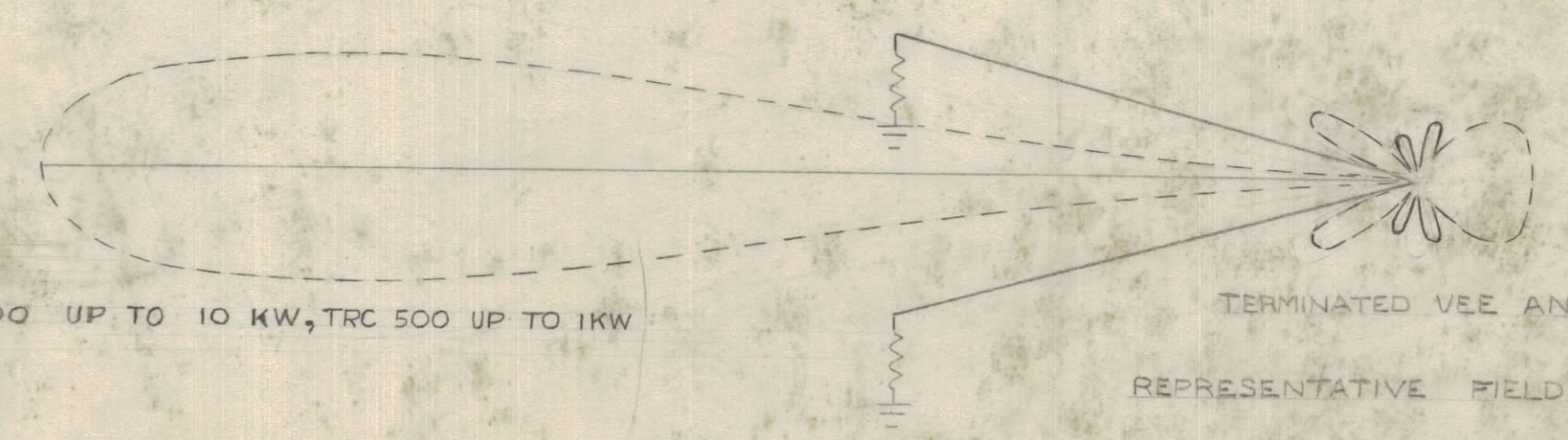


DISTANCE RANGE (MILES)	FREQUENCY RANGE (Mc)	LEG LENGTH (FT)	"P" (FT)	WIDTH (FT)	HEIGHT (FT)	APEX ANGLE Φ (DEGREES)
500	3-9	1000	938	516	120	30.0
500-2000	4-12	750	745	400	90	31.0
1000	4-12	750	740	420	120	32.5
500-2000	6-18	500	495	268	75	31.0
1000	6-18	500	492	280	90	32.5

REPRESENTATIVE DESIGN DATA FOR SLOPING VEE ANTENNAS



UNTERMINATED VEE ANTENNA



TERMINATED VEE ANTENNA

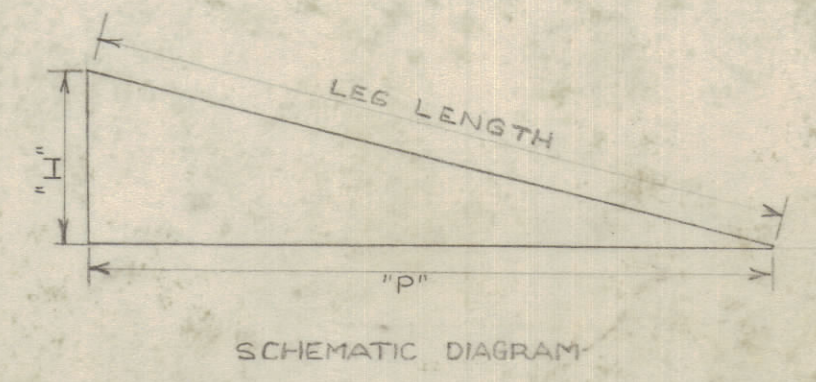
REPRESENTATIVE FIELD STRENGTH PATTERNS

ITEM 1 TMC MODEL TER TERMINATING RESISTORS; TER 3500 UP TO 10KW, TER 500 UP TO 1KW

ITEM 2 TMC MODEL TRC TRANSMITTING ANTENNA COUPLERS; TRC 5000 UP TO 10 KW, TRC 500 UP TO 1KW

OTHER MODELS ARE AVAILABLE FOR POWERS UP TO 40KW & 200 KW

1/4" PHOSPHOR-BRONZE STRANDED RADIATORS AND FEEDERS ARE SUGGESTED TO FACILITATE STORAGE AND INSTALLATION



SCHEMATIC DIAGRAM

TOLERANCES	SCALE
ALL OTHERS DEC. DIM. ± FRAC. DIM. ± ANGULAR DIM. ±	DRILL, PUNCH, COMMERCIAL STOCK SIZES AND MANUFACTURERS TOLERANCES ARE NOT INCLUDED.

MODEL	PROJECT NO.	ASSY. NO.	DATE
			17-4-63

STOCK SIZE		TMC (Canada) LIMITED OTTAWA ONTARIO	
MATERIAL		DESIGN DATA FOR SLOPING VEE ANTENNAS	
WEIGHT PER PC.		D.A.W.	
TYPE & TEMPER.		DRAWN	ELEC. DES. APP. MECH. DES. APP.
HEAT TREAT. SPEC.		CHECKED	FINAL APPROVAL
FINISH & SPEC. NO.		ID10271	