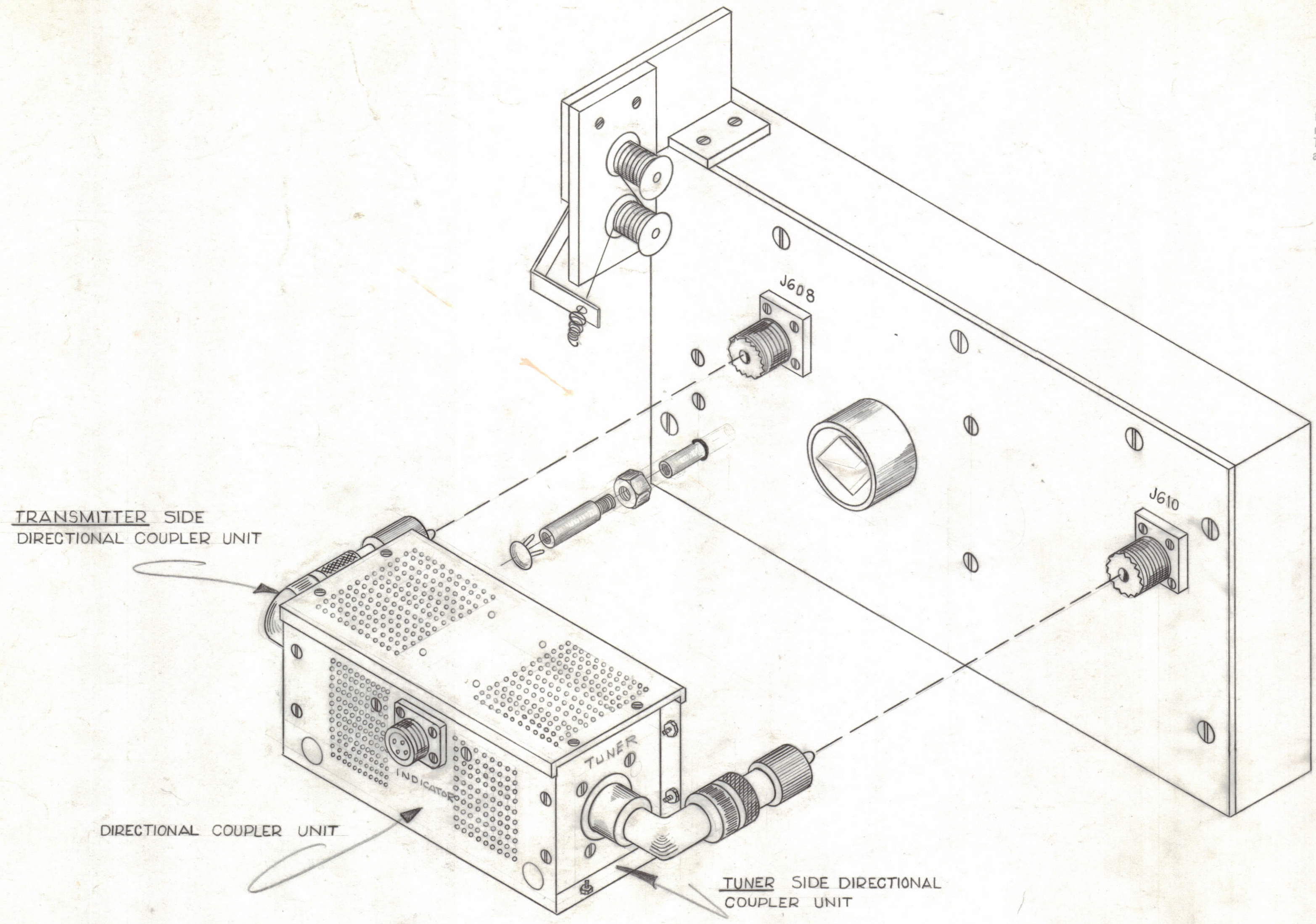


**NOTICE TO PERSONS RECEIVING THIS DRAWING**  
 THE TECHNICAL MATERIEL CORPORATION claims proprietary right in the material disclosed hereon. This drawing is issued in confidence for engineering information only and may not be reproduced or used to manufacture anything shown hereon without permission from THE TECHNICAL MATERIEL CORPORATION to the user. This drawing is loaned for mutual assistance and is subject to recall at any time.  
 Property of:  
 THE TECHNICAL MATERIEL CORPORATION  
 MAMARONECK, NEW YORK



TRANSMITTER SIDE  
DIRECTIONAL COUPLER UNIT

DIRECTIONAL COUPLER UNIT

TUNER SIDE DIRECTIONAL  
COUPLER UNIT

SYM	ZONE	DESCRIPTION	DATE	CH. NO.	DRAFTS	CHECKER	ENG. APP.
A	5F	SWITCH PLUNGER DETAIL CLARIFIED	3-10-61	4361	RU.	<i>[Signature]</i>	<i>[Signature]</i>
UNLESS OTHERWISE SPECIFIED:			SCALE				
DIMENSIONS ARE IN INCHES			MAXIMUM ALLOWABLE TOLERANCES HAVE BEEN DETERMINED AND ANY DEVIATIONS WILL BE CAUSE FOR REJECTION. REMOVE ALL BURRS & SHARP EDGES				
TOLERANCES ON FRACTIONS ± 1/64			DECIMALS ± .005		ANGLES ± 1/2°		

REQ. PER UNIT	MODEL	SECTION	ASS'Y. NO.	DATE
	SBT-1K-D,F,M			2-1-61
USED ON				

REQ. ITEM	PART NO.	DESCRIPTION	SYMBOL
		THE TECHNICAL MATERIEL CORP. MAMARONECK, NEW YORK	
		INSTALLATION DWG. FOR AX-198 AND DIRECTIONAL COUPLER	
		R. UZZO	<i>[Signature]</i>
		DRAWN	CHECKED
		FINAL APPROVAL	
		PK	ID-241
		ELEC. DES. APP.	MECH. DES. APP.
		SHEET	OF