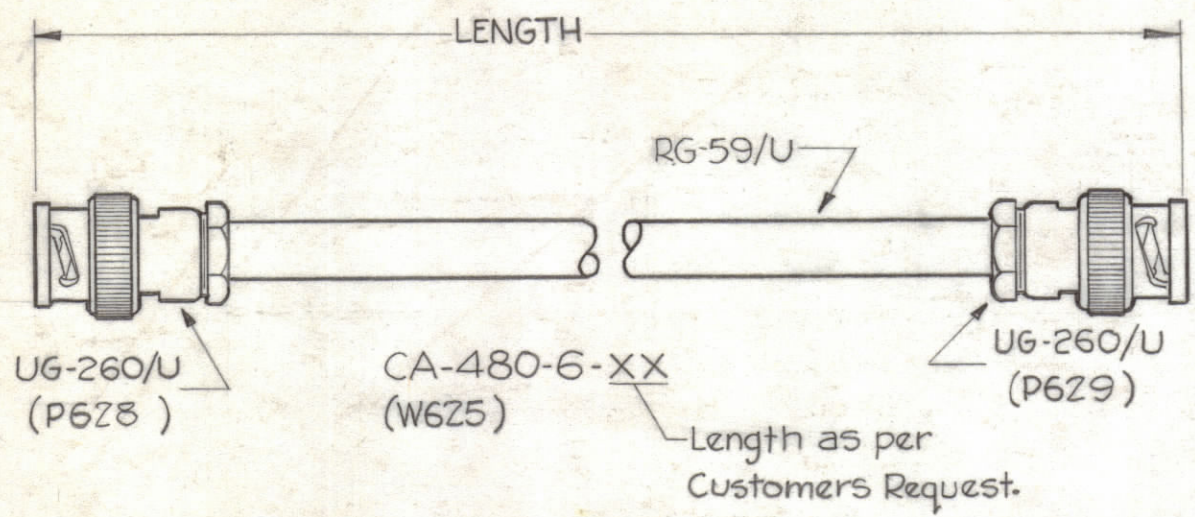
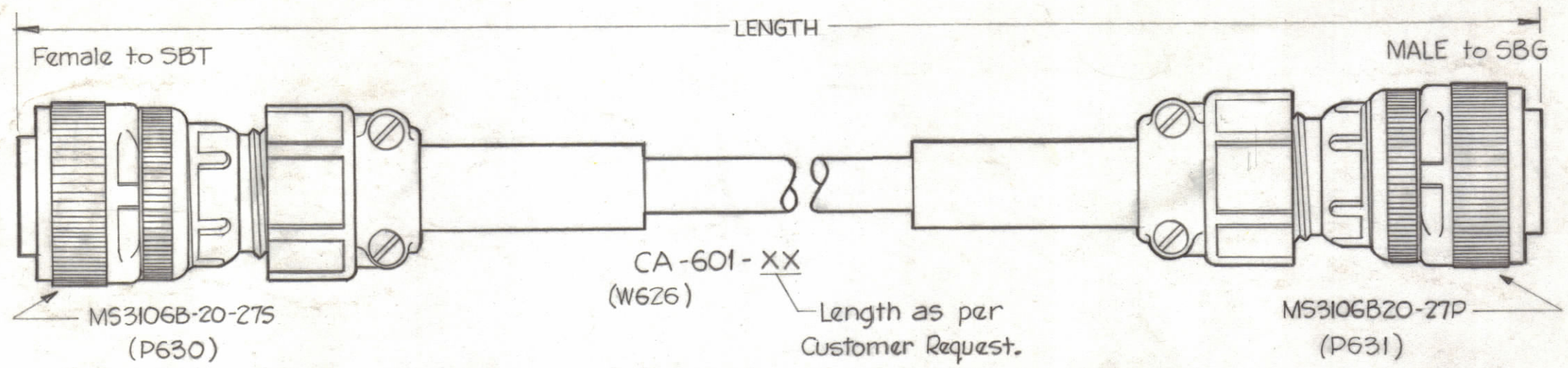


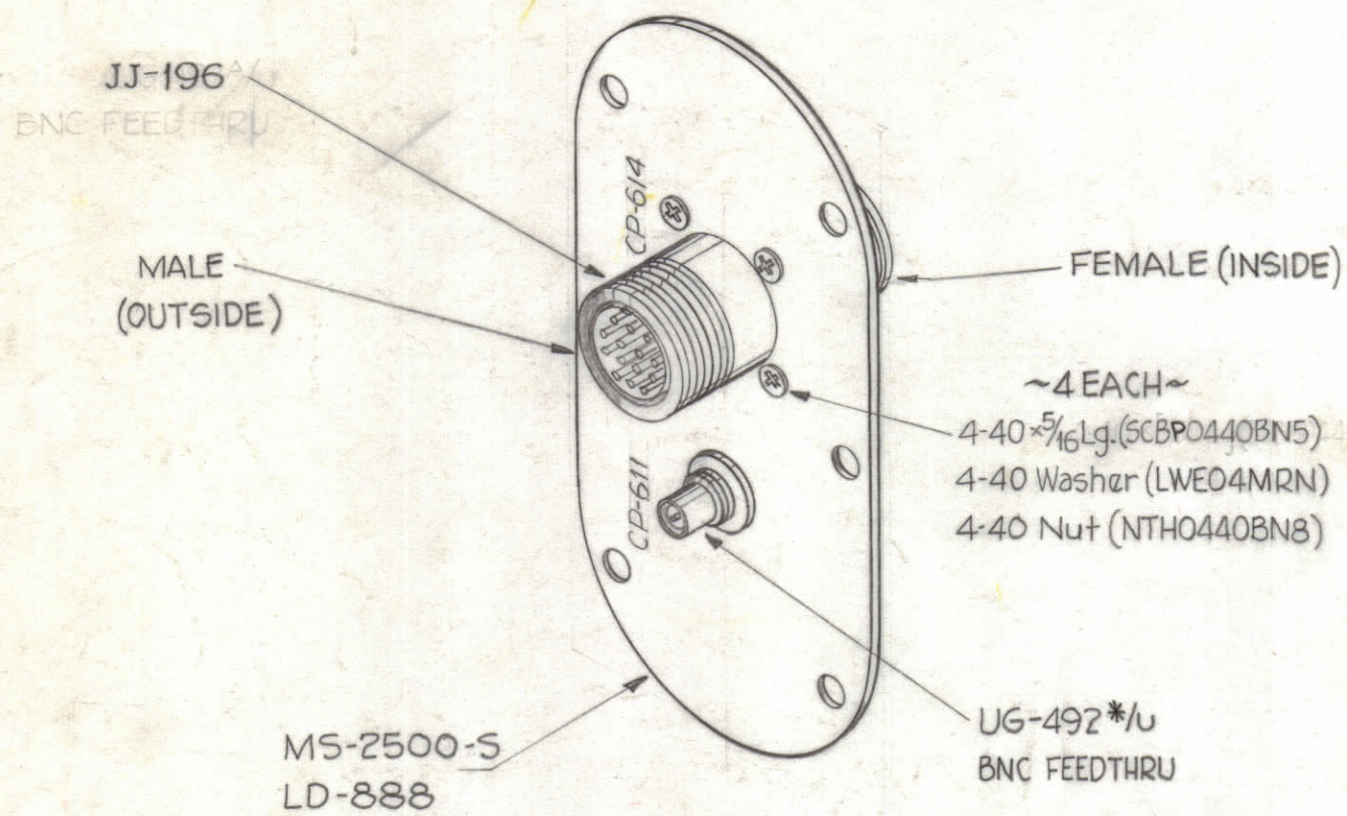
INTERCONNECT CABLE
(1 PER)



INTERCONNECT CABLE
(1 PER)

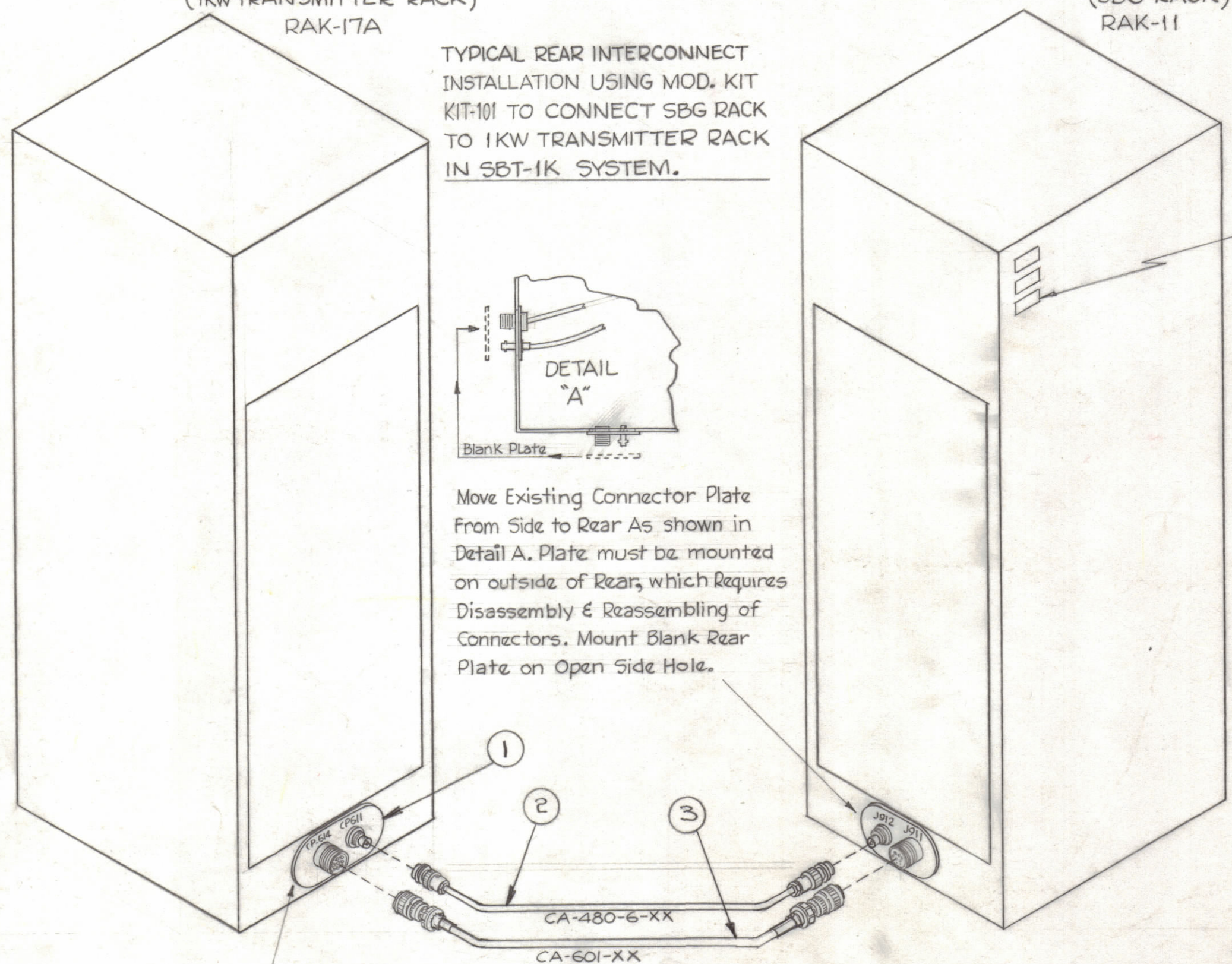


A3561
INTERCONNECT PLATE ASS'Y.
(1 PER)



(1KW TRANSMITTER RACK)
RAK-17A

(SBG RACK)
RAK-11



TYPICAL REAR INTERCONNECT
INSTALLATION USING MOD. KIT
KIT-101 TO CONNECT SBG RACK
TO 1KW TRANSMITTER RACK
IN SBT-1K SYSTEM.

Affix Modification
Nameplate, NP-362-7
Under Existing
Nameplates

INTERCONNECT PLATE ASS'Y.

(NOTE ~ Remove Blank Access Plate Normally
Supplied on Rear and attach Interconnect
Plate Ass'y. as shown. Mount Rear Blank
Plate on Open Side Hole.)

1	3	CAG01-XX	CABLE, INTERCONNECT	W626
1	2	CA480-6-XX	CABLE, R.F.	W625
1	1	A3561	PLATE ASSY, INTERCONNECT	
REQ.	ITEM	PART NO.	DESCRIPTION	SYMBOL
THE TECHNICAL MATERIEL CORP. MAMARONECK, NEW YORK				
STOCK SIZE				
REAR INTERCONNECT KIT ASS'Y. KIT-101				
MATERIAL				
TYPE & TEMPER HEAT TREAT. SPEC.				
FINISH & SPEC. NO.				
ELEC. DES. APP. MECH. DES. APP. SHEET OF				

DES	ON A3561 DETAIL (4) SCREWS WERE SLOTTED	7/16/64	11890				
DES	ON A3561 DETAIL UG-492*/U WAS UG-492A/U						
#	ITEM (1), (2) & (3) ADDED TO B/M & PICTORIAL						
B	E1E2 ON RAK11 Nameplates & Note Added	7-19-61	5297	G.D.L.	EU.		
A	KIT-101 WAS KIT-1 (MODEL NO.)	7-21-61	4224	EGM	90%		
SYM	ZONE	DESCRIPTION	DATE	CH. NO.	DRAFTS	CHECKER	ENG. APP.
UNLESS OTHERWISE SPECIFIED:			SCALE				
DIMENSIONS ARE IN INCHES			MAXIMUM ALLOWABLE TOLERANCES HAVE BEEN DETERMINED AND ANY DEVIATIONS WILL BE CAUSE FOR REJECTION. REMOVE ALL BURRS & SHARP EDGES				
TOLERANCES ON FRACTIONS ± 1/64			DECIMALS ± .005				
			ANGLES ± 1/2°				

REQ. PER UNIT	MODEL	SECTION	ASSY. NO.	DATE
	KIT-1			2-3-61
USED ON				