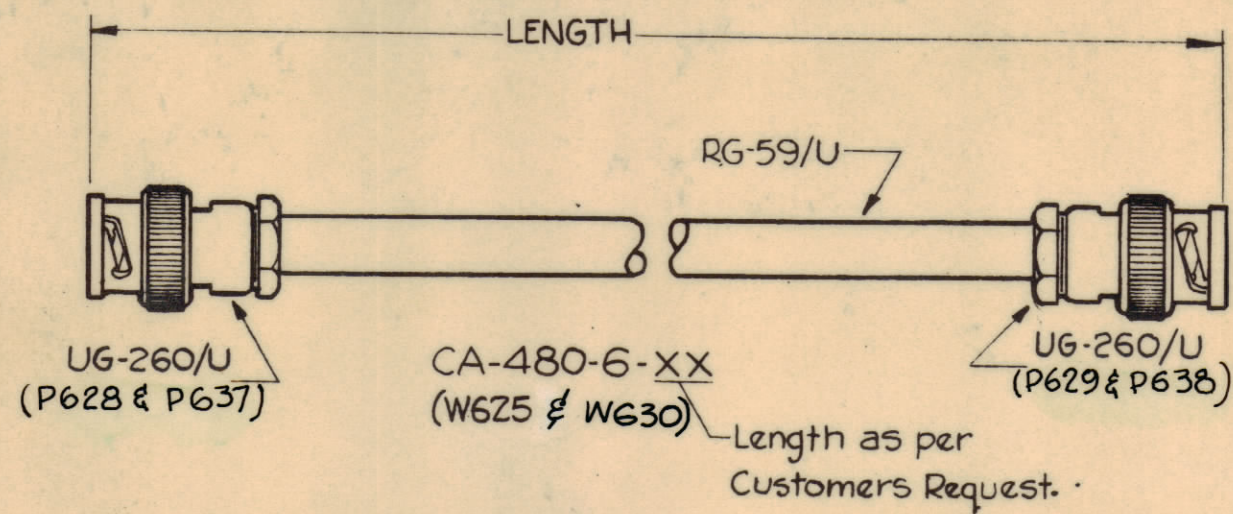
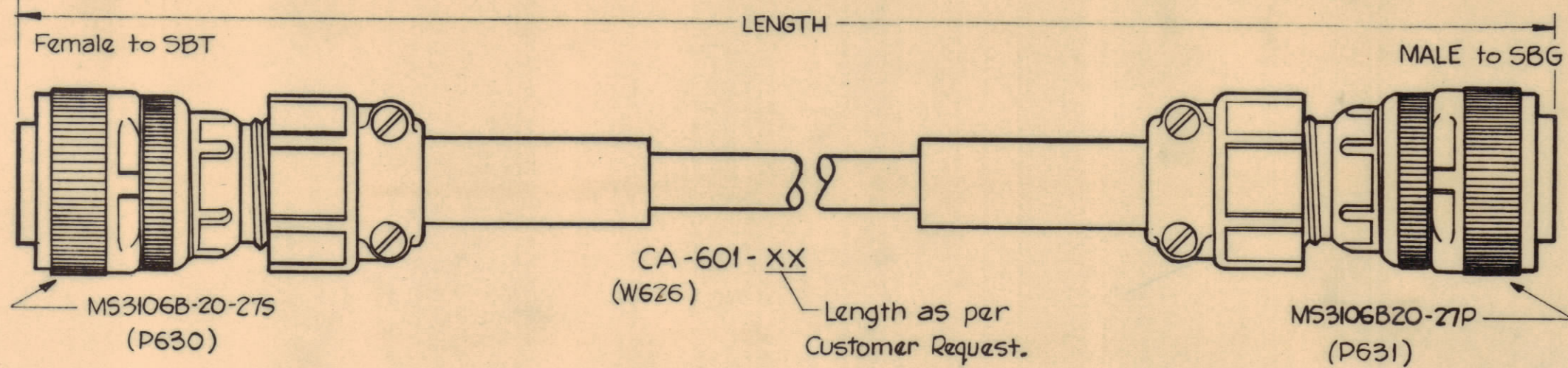


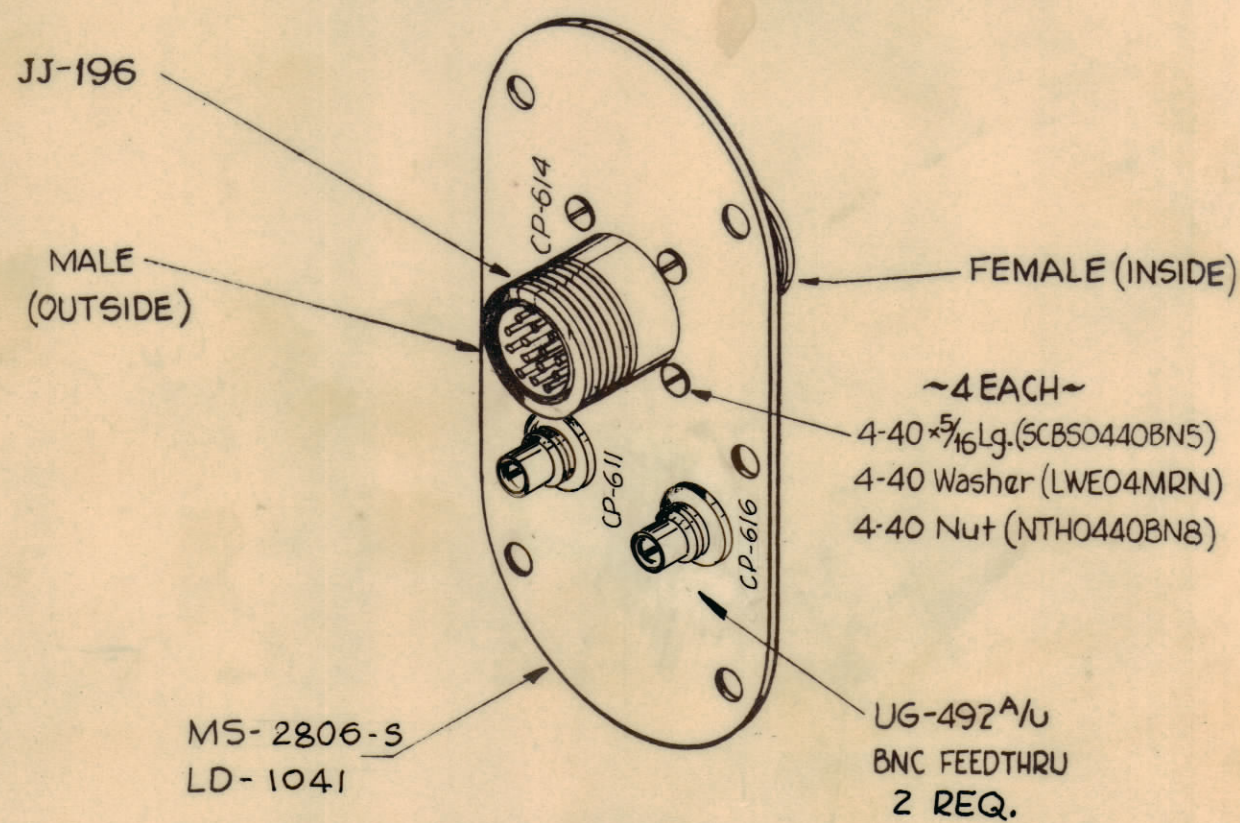
INTERCONNECT CABLE  
(2 PER)



INTERCONNECT CABLE  
(1 PER)

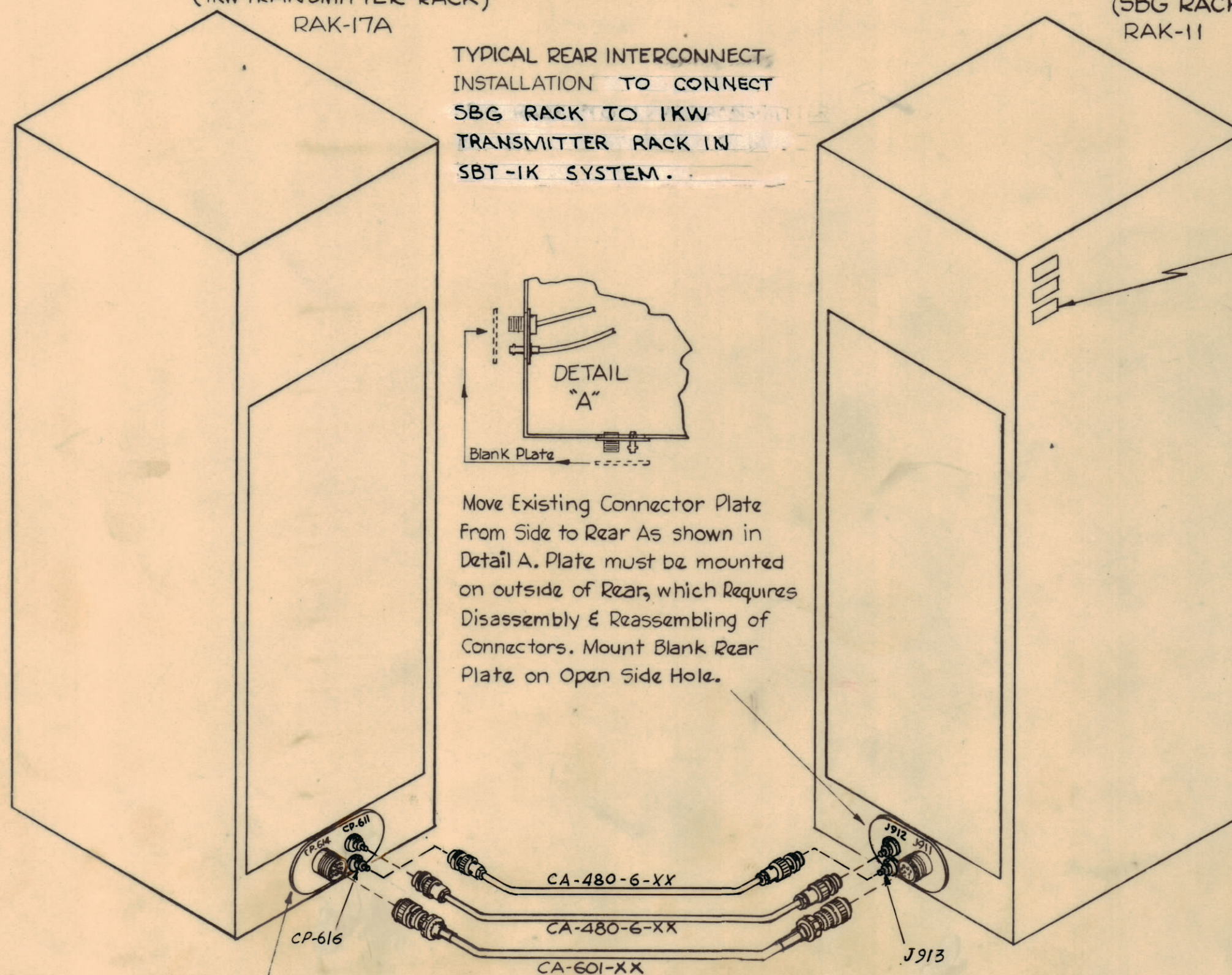


INTERCONNECT PLATE ASS'Y.  
(1 PER)



(IKW TRANSMITTER RACK)  
RAK-17A

(SBG RACK)  
RAK-11



TYPICAL REAR INTERCONNECT  
INSTALLATION TO CONNECT  
SBG RACK TO IKW  
TRANSMITTER RACK IN  
SBT-1K SYSTEM.

Move Existing Connector Plate  
From Side to Rear As shown in  
Detail A. Plate must be mounted  
on outside of Rear, which requires  
Disassembly & Reassembling of  
Connectors. Mount Blank Rear  
Plate on Open Side Hole.

Affix Modification  
Nameplate, NP-362-13  
Under Existing  
Nameplates

INTERCONNECT PLATE ASS'Y.  
(NOTE ~ Remove Blank Access Plate Normally  
Supplied on Rear and attach Interconnect  
Plate Ass'y. as shown. Mount Rear Blank  
Plate on Open Side Hole.)

SYM	ZONE	DESCRIPTION	DATE	CH. NO.	DRAFTS	CHECKER	ENG. APP.
A		DELE. "USING MOD. KIT. KIT-101"	11/4/62	17190	RME	SKS	

UNLESS OTHERWISE SPECIFIED:  
DIMENSIONS ARE IN INCHES  
TOLERANCES ON  
FRACTIONS ± 1/64    DECIMALS ± .005    ANGLES ± 1/2°

SCALE  
MAXIMUM ALLOWABLE TOLERANCES HAVE  
BEEN DETERMINED AND ANY DEVIATIONS  
WILL BE CAUSE FOR REJECTION.  
REMOVE ALL BURRS & SHARP EDGES

REQ. PER UNIT	MODEL	SECTION	ASS'Y. NO.	DATE
	KIT-132			1-11-62

REQ. ITEM	PART NO.	DESCRIPTION	SYMBOL
THE TECHNICAL MATERIEL CORP. MAMARONECK, NEW YORK			
REAR INTERCONNECT KIT ASS'Y. KIT-132			
STOCK SIZE			
MATERIAL			
TYPE & TEMPER			
FINISH & SPEC. NO.			
DRAWN: G.D.L. / RK		CHECKED: RUZZO / 16	FINAL APPROVAL: SKS
ELEC. DES. APP.		MECH. DES. APP.	SHEET OF
		ID-269 A	