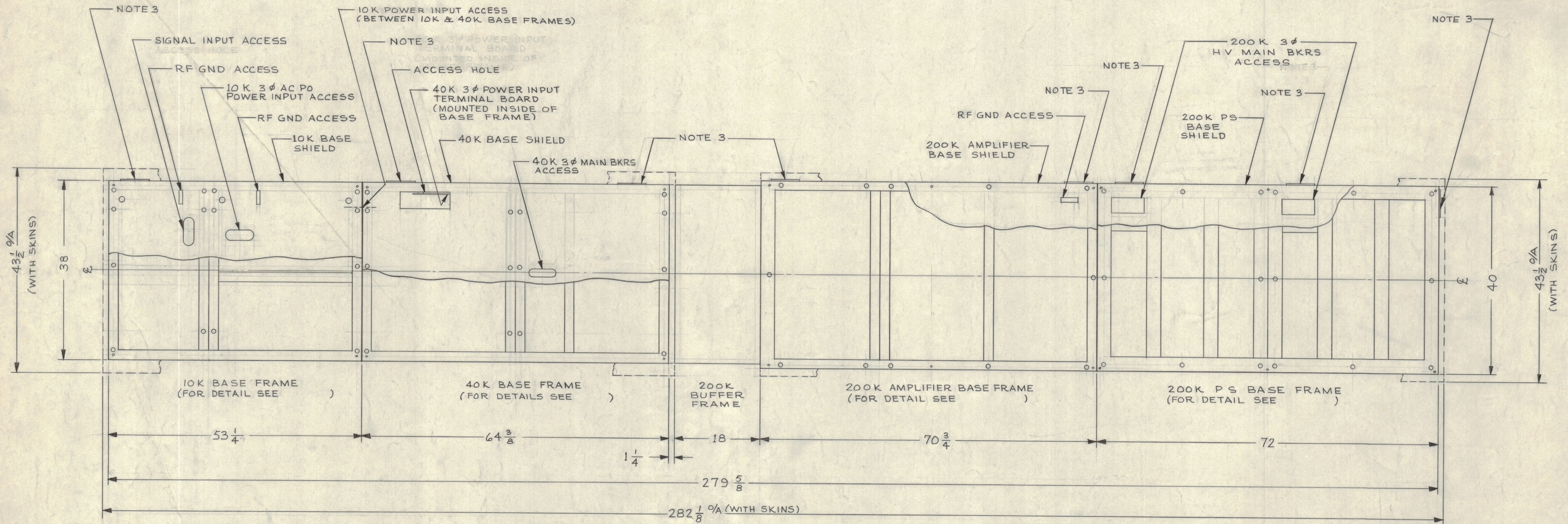


ZONE		SYM	DESCRIPTION	DATE	E.M.N. NO.	DRAFT	CHKD	APPD
X			ON TITLE BLOCK SHEET 1 OF 7 WAS 3 OF 4	12745		HCA		
			ORIGINAL RELEASE FOR PRODUCTION	21147				
A			ADDED 480 VAC PWR. REQUIREMENTS (SH.5)	3365	13628	MT		
B			SEE SHEETS 7, 2, 5, 8	62561	14346	DVV		



TOP VIEW - BASE PLAN

NOTES:

- 1 - THIS DRAWING IS INTENDED TO PROVIDE OUTLINE DETAIL FOR TRANSMITTER SITE SELECTION. PROPER ALIGNMENT OF TRANSMITTER IS BEST OBTAINED BY DRILLING BASE MOUNTING HOLES UPON RECEIPT OF BASE FRAMES.
- 2 - USE  $\mathcal{E}$  FOR INSTALLATION OF 10K, 40K, 200K BASE FRAMES AND BUFFER FRAME.
  - (a) 10K, 40K BASE FRAMES AND BUFFER FRAME 38 INCHES WIDE.
  - (b) 200K BASE FRAMES 40 INCHES WIDE.
- 3 - REMOVABLE ACCESS HOLE PLATES FOR INCOMING AC POWER AND SIGNAL WIRING.

NOTES

QTY./UNIT	MODEL USED ON	ABB'Y. NO.
SCALE	CODE	

REQ'D.	ITEM	PART NUMBER	DESCRIPTION	SYMBOL
LIST OF MATERIAL				
MATERIAL				
FINISH				
THE TECHNICAL MATERIEL CORP. MAMARONECK, NEW YORK				
TITLE BASE INSTALLATION GPT-200K (AN/FRT-62)				
DRAWN M. J. TANTILLO		DATE 5-16-63		FINAL APPROVAL
CHECKED 16		DATE 7-29-65		
ELECT. DES.		DATE		
MECH. DES.		DATE		

UNLESS OTHERWISE SPECIFIED DIMENSIONS ARE IN INCHES AND INCLUDE CHEMICALLY APPLIED OR PLATED FINISHES

DIGITALS  
X ± .05  
XX ± .01  
XXX ± .005

TOLERANCES  
± 1/16  
ANGLES  
± 0° 30'

THE CONTENTS OF THIS DRAWING ARE THE EXCLUSIVE PROPERTY OF THE TECHNICAL MATERIEL CORP. ITS UNAUTHORIZED USE OR REPRODUCTION IN WHOLE OR IN PART IS STRICTLY FORBIDDEN.

ID-288  
SHEET 4 OF 8