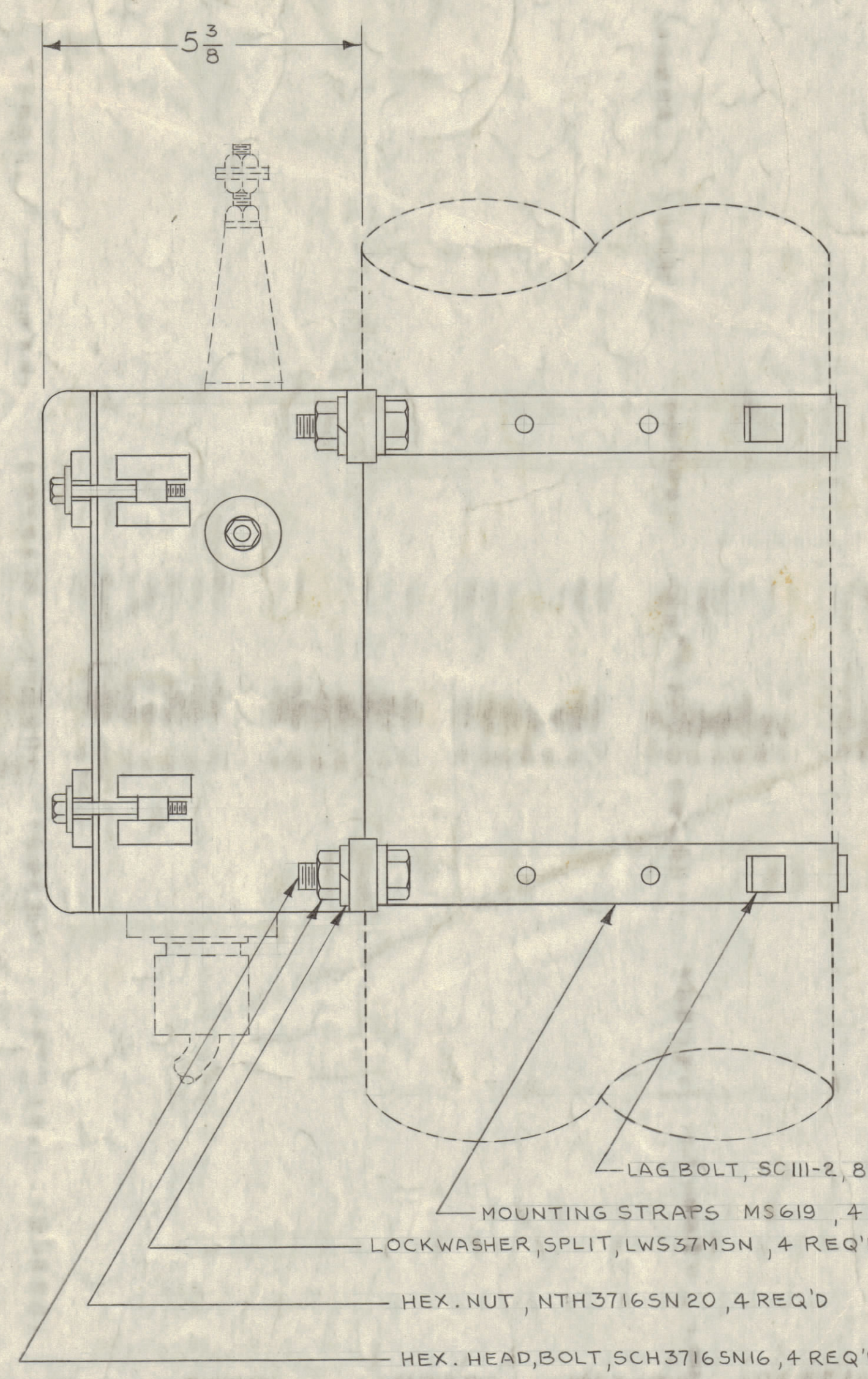
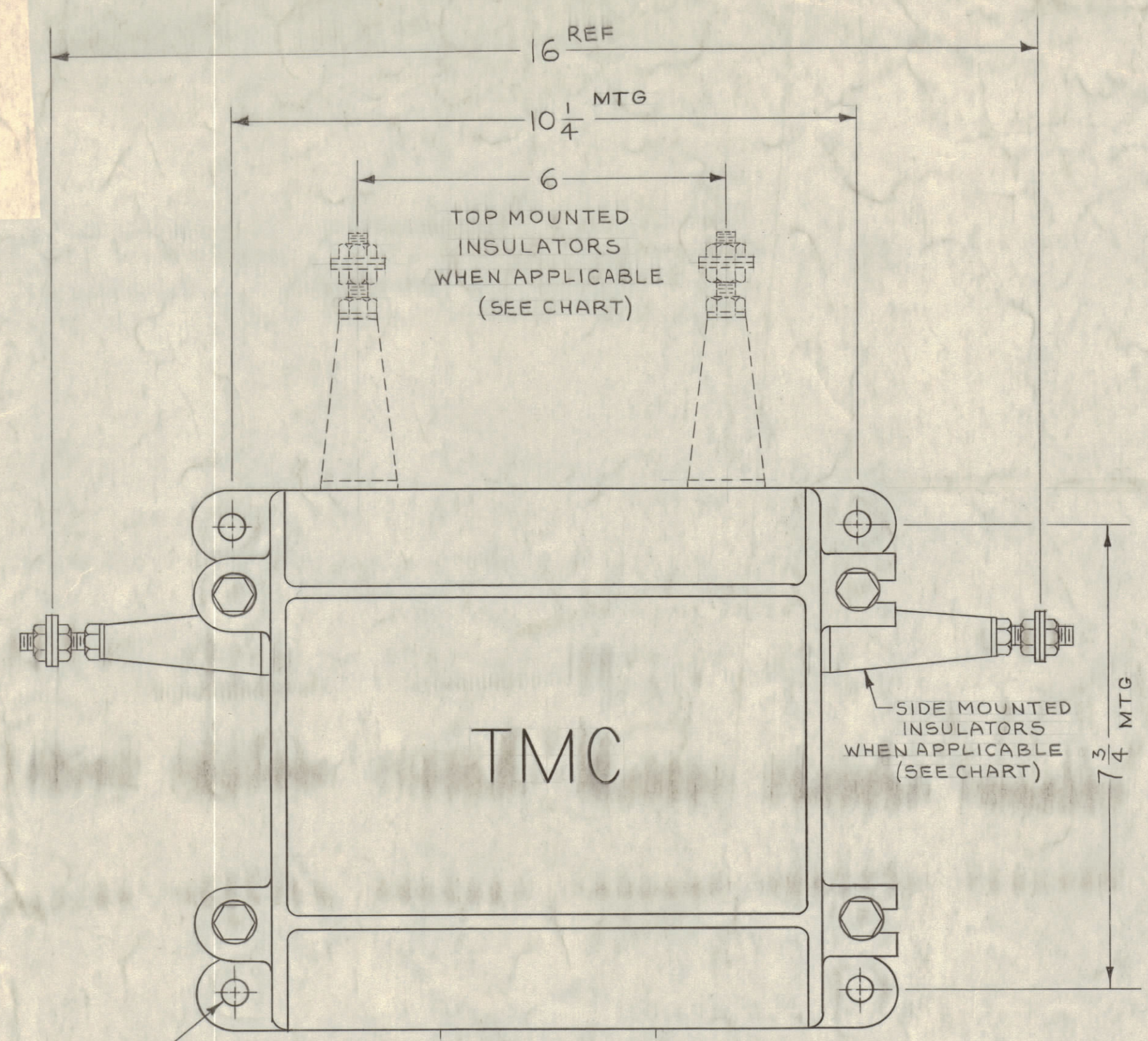


REVISIONS							
ZONE	SYM	DESCRIPTION	DATE	E.M.N. NO.	DRAFT	CHKD	APPD
-#	X	EXPERIMENTAL RELEASE	4-15-64	X	ASB		
-#	O	ORIGINAL RELEASE FOR PRODUCTION	5-28-64	O	A.M.		

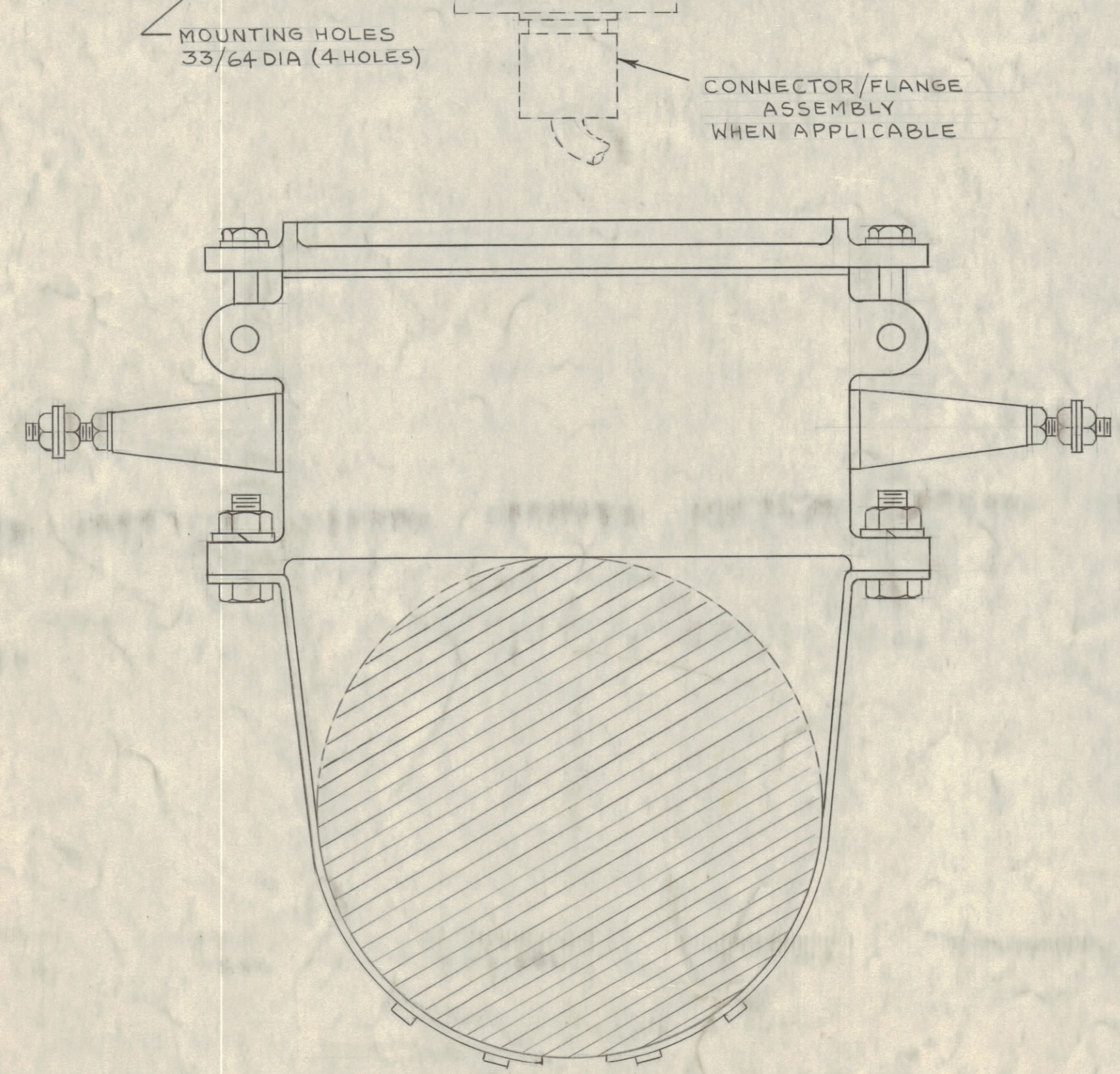


MOUNTING HARDWARE SUPPLIED BY TMC

BAC			
MODEL	INS. MTD. ON SIDES	ON TOP	QUAN. OF INS.
BAC-1	X		2
BAC-1-520	X		2

TRC			
MODEL	INS. MTD. ON SIDES	ON TOP	QUAN. OF INS.
TRC-100	X		2
TRC-500	X		2
TRC-3500 50U/600B	X		2
TRC-3500 70U/600B	X		2

RAC			
MODEL	INS. MTD. ON SIDES	ON TOP	QUAN. OF INS.
RAC-1	X		2
RAC-3	X		2
RAC-7	X		2
RAC-7A		X	2
RAC-9	X		2
RAC-11	X		2
RAC-12	X		2
RAC-13	X		2
RAC-18		X	2
RAC-20	X		2
RAC-24	X		2
RAC-30	X		2
RAC-32	X		2
RAC-34	X		2
RAC-37	X		2
RAC-41	X		2
RAC-42	X		2
RAC-43	X		2
RAC-44		X	2



NOTES

QTY/UNIT	MODEL USED ON	CODE	ASSY. NO.	UNLESS OTHERWISE SPECIFIED DIMENSIONS ARE IN INCHES AND INCLUDE CHEMICALLY APPLIED OR PLATED FINISHES	DRAWN	DATE	FINAL APPROVAL	DATE
SCALE	A			DECIMALS .1 ± .05 .XX ± .01 .XXX ± .005	ASB	4-15-64	RAC	4-22-64
THE CONTENTS OF THIS DRAWING ARE THE EXCLUSIVE PROPERTY OF THE TECHNICAL MATERIEL CORP. ITS UNAUTHORIZED USE OR REPRODUCTION IN WHOLE OR IN PART IS STRICTLY FORBIDDEN.				TOLERANCES	ELECT. DES.	DATE	MECH. DES.	DATE
				± 1/64 ANGLES ± 0° 30'		3/22/64		

REQ'D.	ITEM	PART NUMBER	DESCRIPTION	SYMBOL
	R. HAY		LIST OF MATERIAL	
	MATERIAL	//	THE TECHNICAL MATERIEL CORP. MAMARONECK, NEW YORK	
	FINISH	//	TITLE INSTALLATION DIAGRAM RAC, BAC, TRC	

ID 297

ID 297