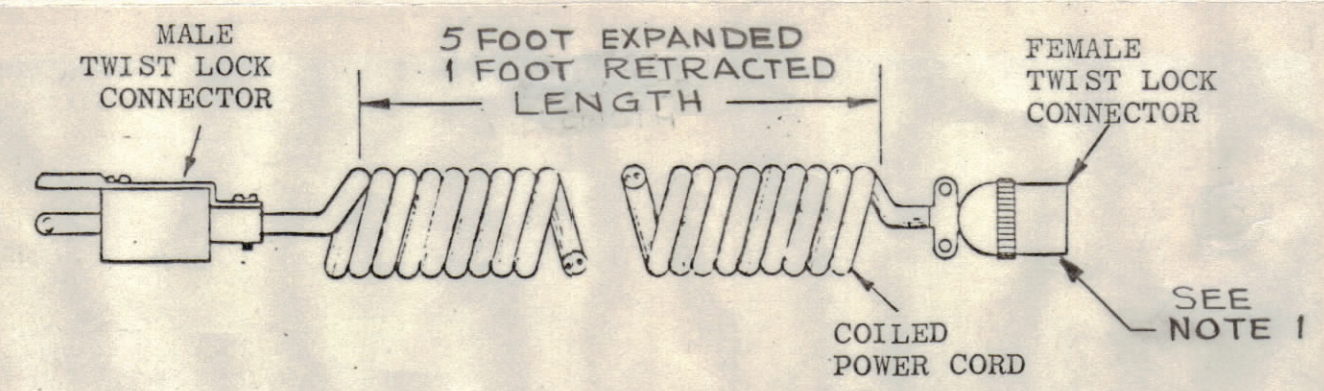
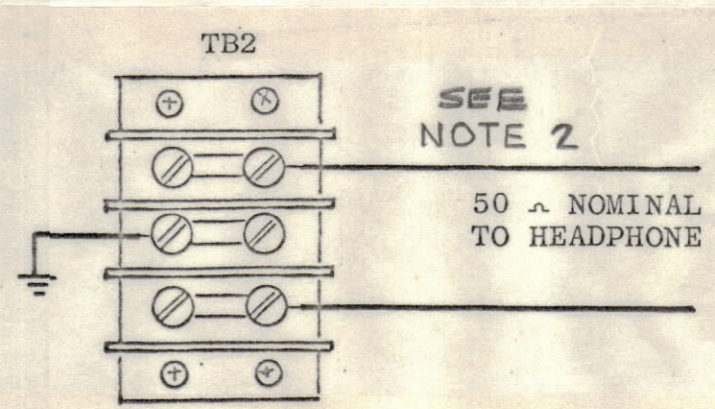
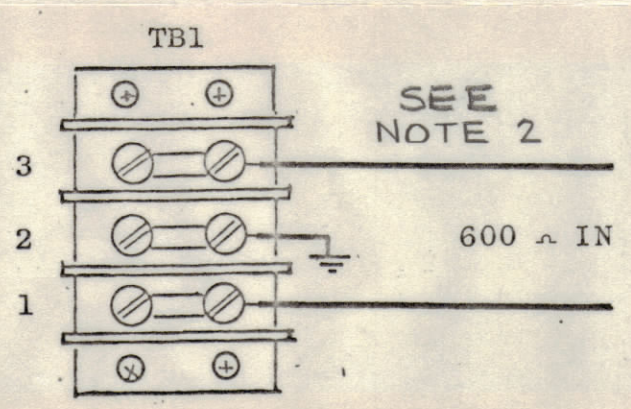
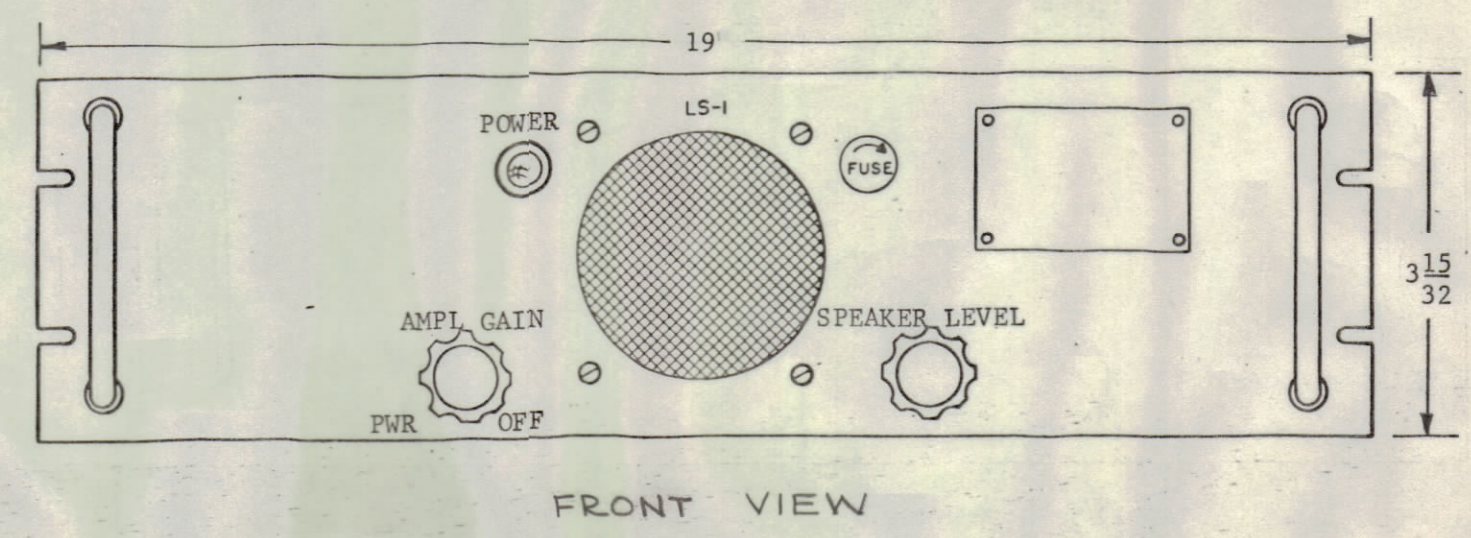
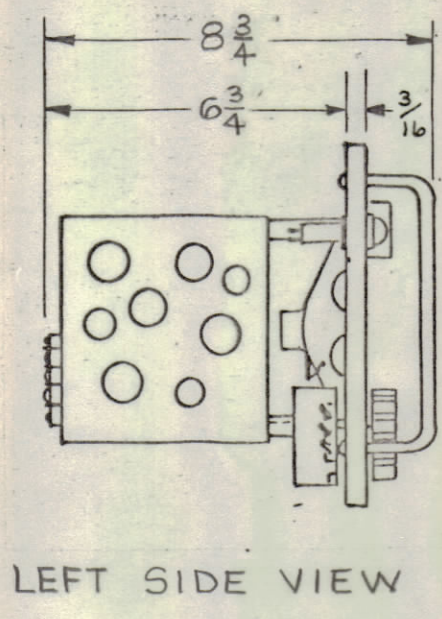
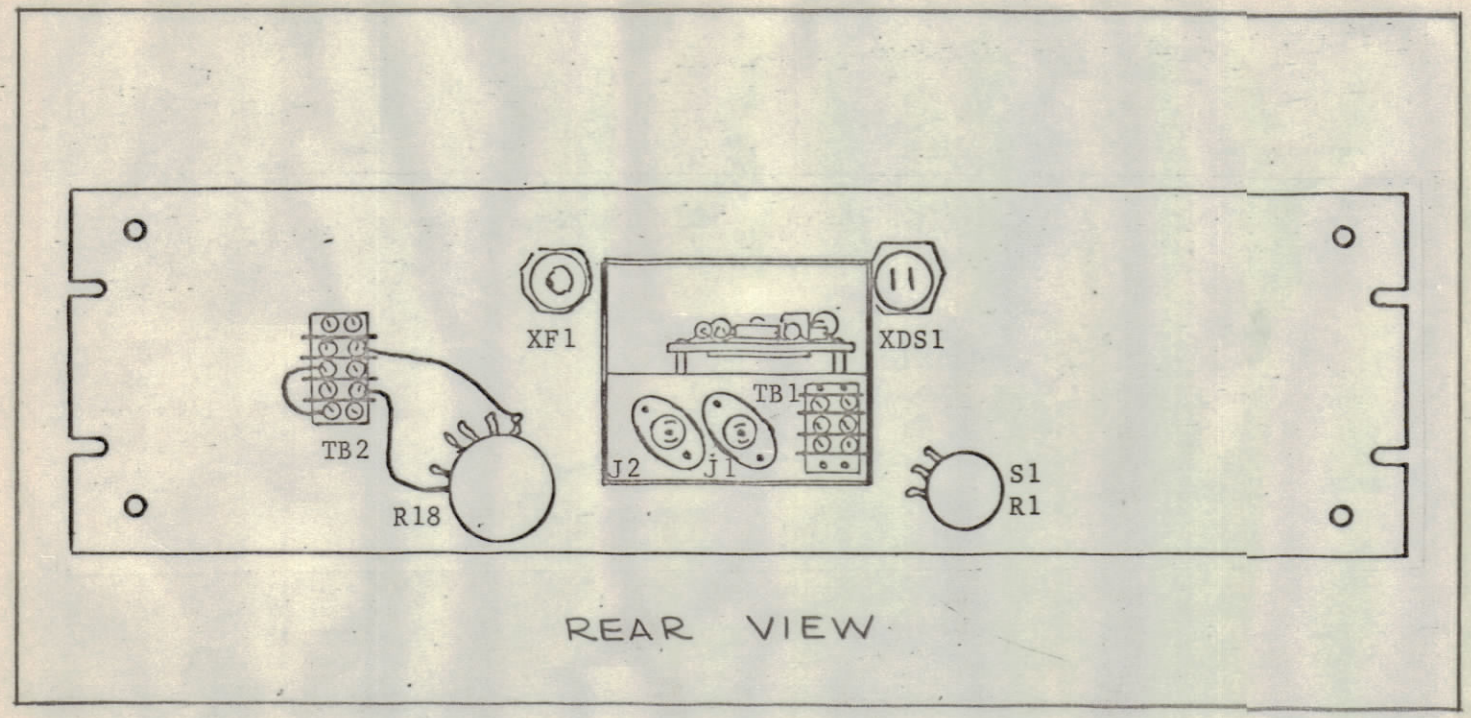


TECHNICAL DATA

POWER INPUT: 6 WATTS
 VOLTAGE: 115/230 VAC
 PHASE: 1 ϕ
 FREQUENCY: 50/60 CPS
 HEAT DISSIPATION: 4 WATTS - NO BTU'S
 AMBIENT TEMPERATURE RANGE: 0 TO 50°C
 RELATIVE HUMIDITY: 0 TO 90%
 WEIGHT: 5 lbs

REVISIONS							
SYM	ZONE	DESCRIPTION	DATE	E.M.N.NO.	DRAFT	CHKD	APPD
A		REVISED	9/27/65		MJT		
B		SEE SHTS 1,4 & 5	6/1/66	16315	C.H.		



CA555-4 CABLE ASSEMBLY, AC
 (SUPPLIED)

- NOTES:
 1. PLUGS INTO J1 (SEE DETAIL A) THIS SHEET.
 2. INTERIOR CABINET WIRING (GFE) SEE SHEET 6 FOR INSTALLATION MATERIAL LIST.

MAXIMUM ALLOWABLE TOLERANCES HAVE BEEN DETERMINED AND ANY DEVIATIONS WILL BE CAUSE FOR REJECTION.

QTY REQ	ITEM	PART NO.	DESCRIPTION	SYMBOL
BILL OF MATERIAL				
FINAL APPROVAL: <i>[Signature]</i> DATE: 5/13/65 MECH. DES. DATE: _____ ELECT. DES. DATE: 5-12-65 CHECKED: <i>[Signature]</i> DATE: 5-12-65 DRAWN: Jayness DATE: 5-1-65			THE TECHNICAL MATERIEL CORP. MAMARONECK, NEW YORK CONTROL MONITOR GROUP, MODEL RCWB-1 LOUDSPEAKER ASSEMBLY, MODEL HSS-7	
UNLESS OTHERWISE SPECIFIED DIMENSIONS ARE IN INCHES TOLERANCES ON FRACTIONS DECIMALS ANGLES $\pm 1/64$ $\pm .005$ $\pm 1/2^\circ$		APPROVED FOR BUSHIPS CODE: 82679 SIZE: C DWG. NO.: ID-325 ISSUE: B CONTRACT NO.: N600(63133-11-126)63002 SCALE: NONE SHEET 2 OF 6		