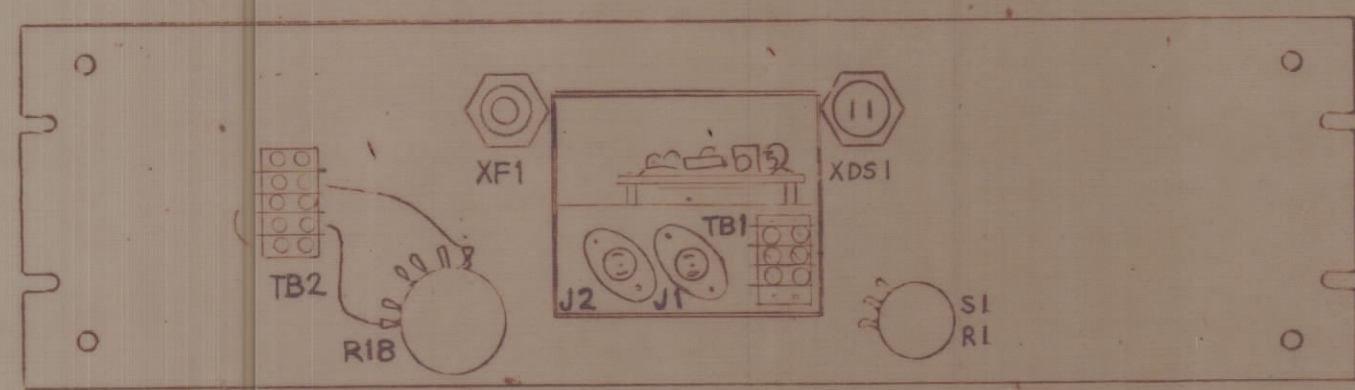


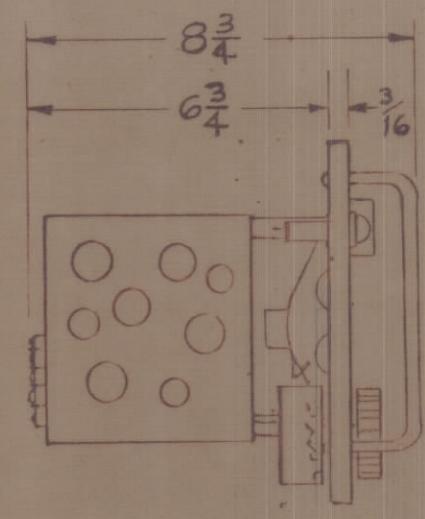
REVISIONS							
SYM	ZONE	DESCRIPTION	DATE	E.M.N.NO	DRAFT	CHKD	APPD

**TECHNICAL DATA**

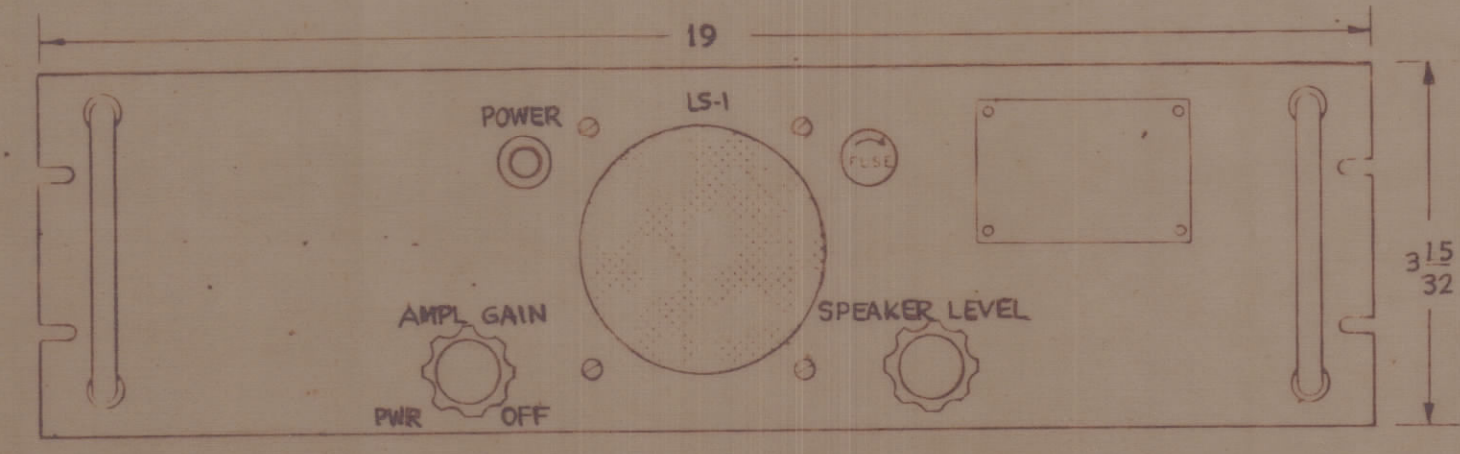
POWER INPUT: 6 WATTS  
 VOLTAGE: 115/230 VAC  
 PHASE: 1  $\phi$   
 FREQUENCY: 50/60 CPS  
 HEAT DISSIPATION: 4 WATTS - NO BTU'S  
 AMBIENT TEMPERATURE RANGE: 0 TO 50°C  
 RELATIVE HUMIDITY: 0 TO 90%  
 WEIGHT: 5 lbs



REAR VIEW

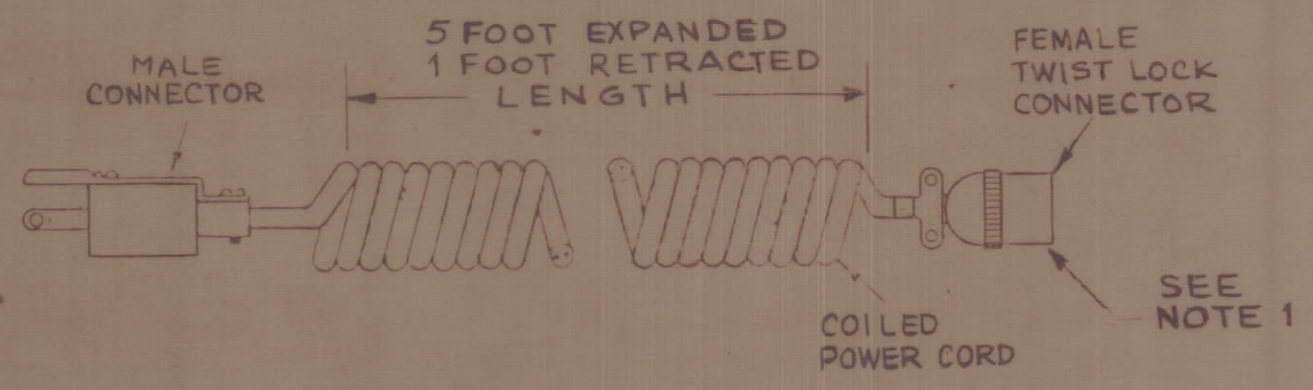
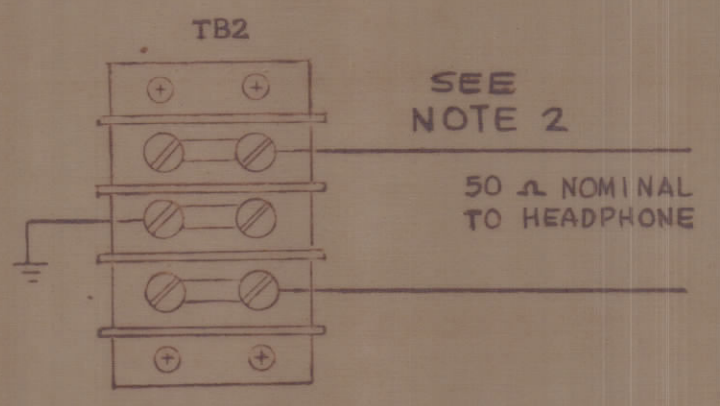
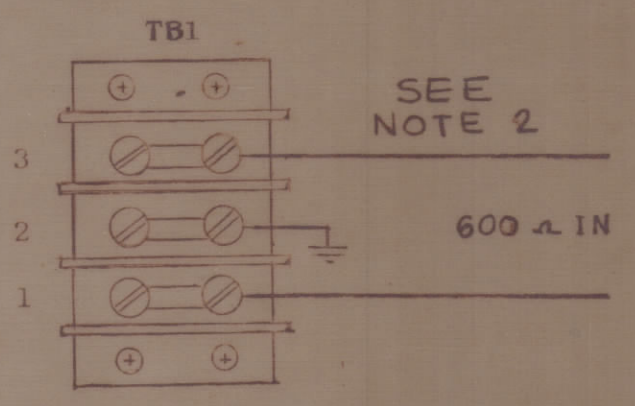


LEFT SIDE VIEW



FRONT VIEW

DETAIL A



CA555-4 CABLE ASSEMBLY, AC

- NOTES:
1. PLUGS INTO J1 (SEE DETAIL A) THIS SHEET.
  2. INTERIOR CABINET WIRING (GFE) SEE SHEET 6 FOR INSTALLATION MATERIAL LIST, ITEM 10

CONTRACT No. N600(63133-11-126) 63002	EXAMINED		NAVAL SHORE ELECTRONICS ENGINEERING CENTER WASHINGTON, D C	
TECHNICAL MATERIEL CORP			OFFICIAL	SIGNATURE
DWG No. ID-325-2	BR HEAD			
<i>[Signature]</i>	PROJ ENG			
APPROVED DATE	DIV DIR			
SATISFACTORY TO:	PROJ DIR			
	DRAFT SEC			
	DRAWN			
	FEDERAL SUPPLY CODE 82679	RW 23	CODE IDENT 82679	SIZE C
DATE:	CONTR DRAWING NO ID-325-2	SCALE NONE	562	
			SHEET 2 OF 6	