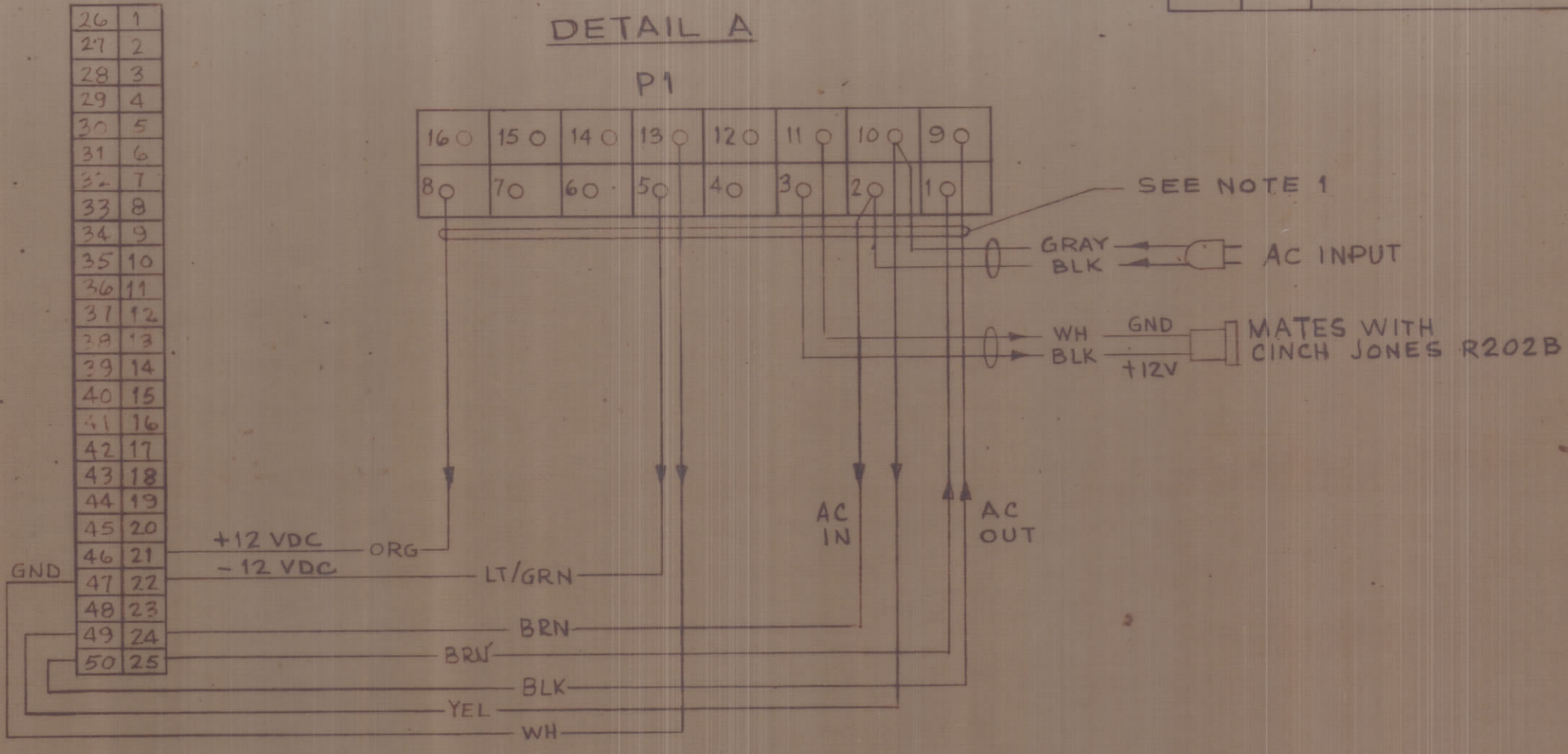


REVISIONS						
SYM	ZONE	DESCRIPTION	DATE	E.M.N.NO	DRAFT	CHKD

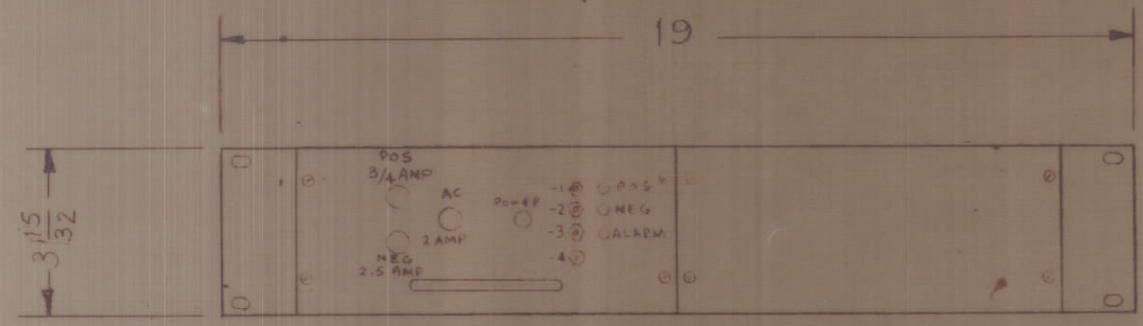
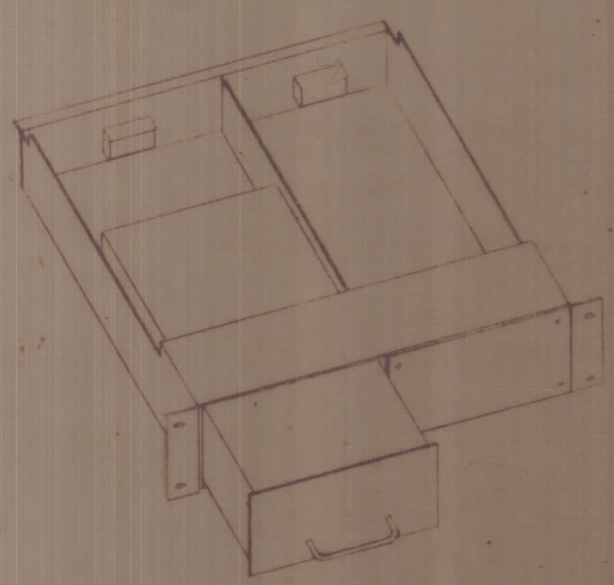
AMPHENOL
57-30500

DETAIL A

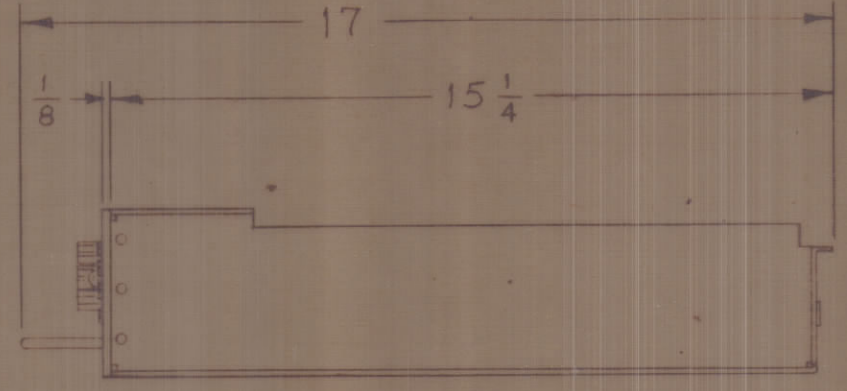
P1



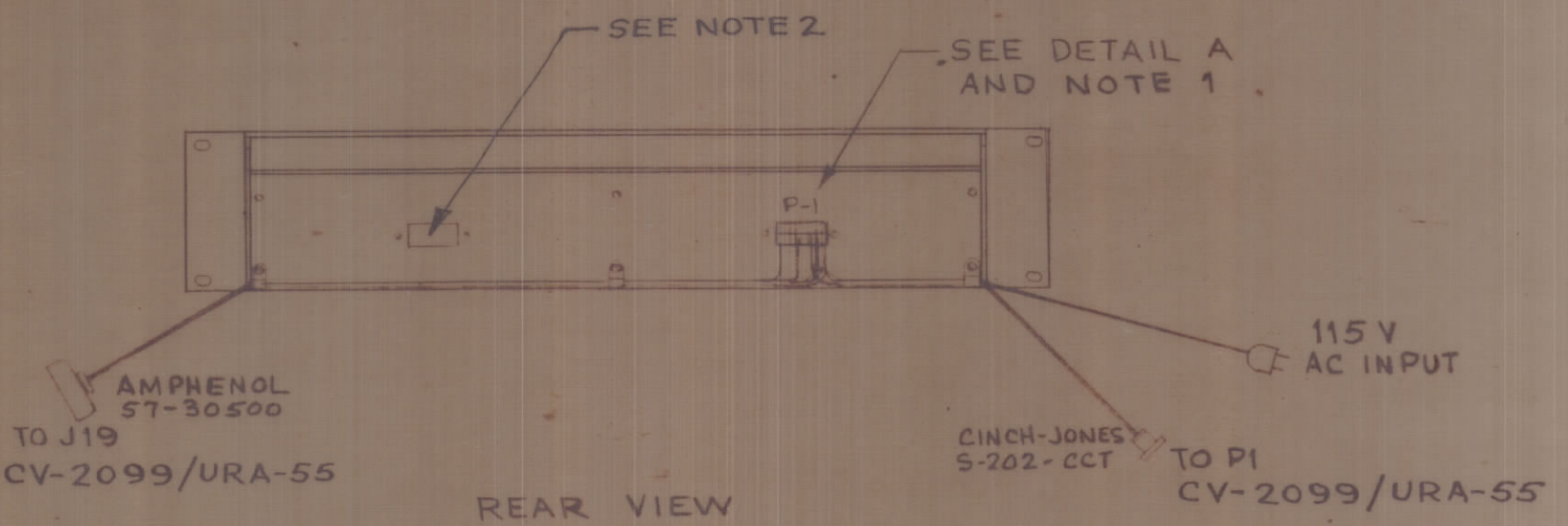
MATES WITH
AMPHENOL 57-40500
SEE SHEET 3 OF 5
DETAIL A



FRONT VIEW



RIGHT SIDE VIEW



REAR VIEW

NOTE:

- 1- CABLE HARNESS PART OF SHELF ATTACHED TO P1, DETAIL "A"(THIS SHEET) SHOWS CABLING PROVIDED AS PART OF THE EQUIPMENT.
- 2- FOR ADDITIONAL POWER SUPPLY UNIT (NOT SUPPLIED) NOT USED.

CONTRACT No. N600(63133-11-126)63002	EXAMINED		NAVAL SHORE ELECTRONICS ENGINEERING CENTER WASHINGTON, D C	
TECHNICAL MATERIEL CORP	OFFICIAL	SIGNATURE	PP-4541/URA CONVERTER-POWER SUPPLY GROUP RECEIVE POWER SUPPLY	
DWG No. ID-331-2	BR HEAD			
APPROVED <i>[Signature]</i> DATE <i>3/2/66</i>	PROJ ENG			
SATISFACTORY TO:	DIV DIR			
	PROJ DIR		RW 23 CODE IDENT 82679 SIZE C 567	
	DRAFT SEC		FEDERAL SUPPLY CODE 82679	
	DRAWN		CONTR DRAWING NO. ID-331-2 SCALE NONE SHEET 2 OF 5	