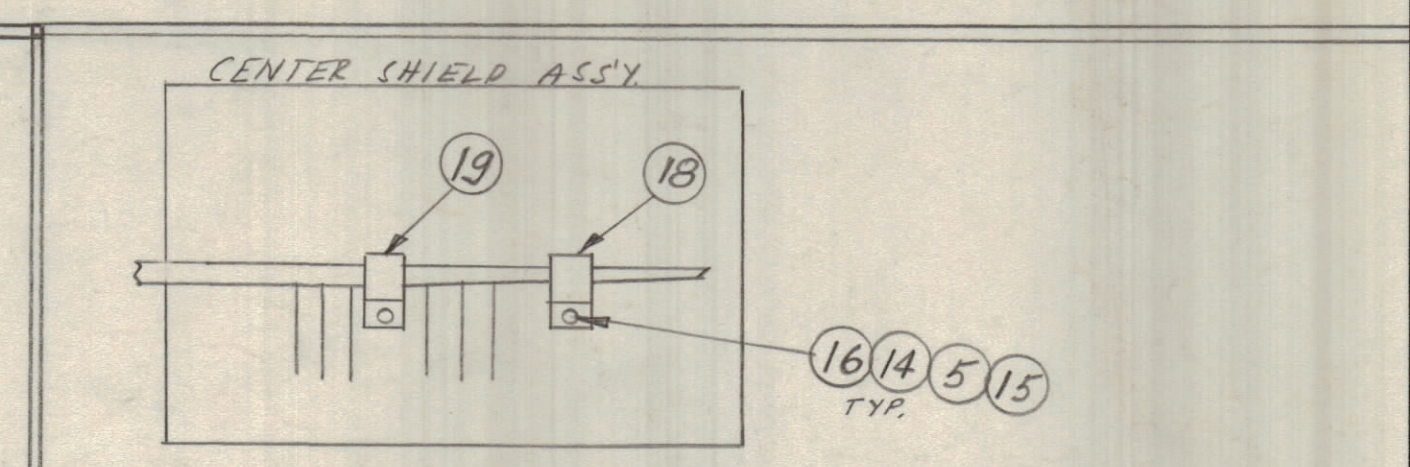
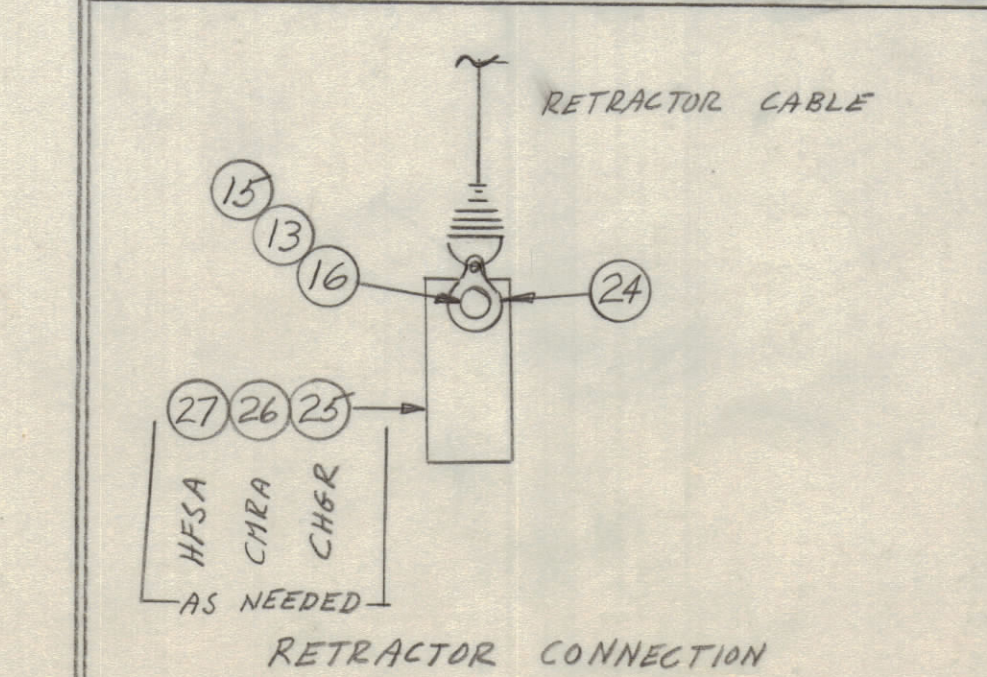
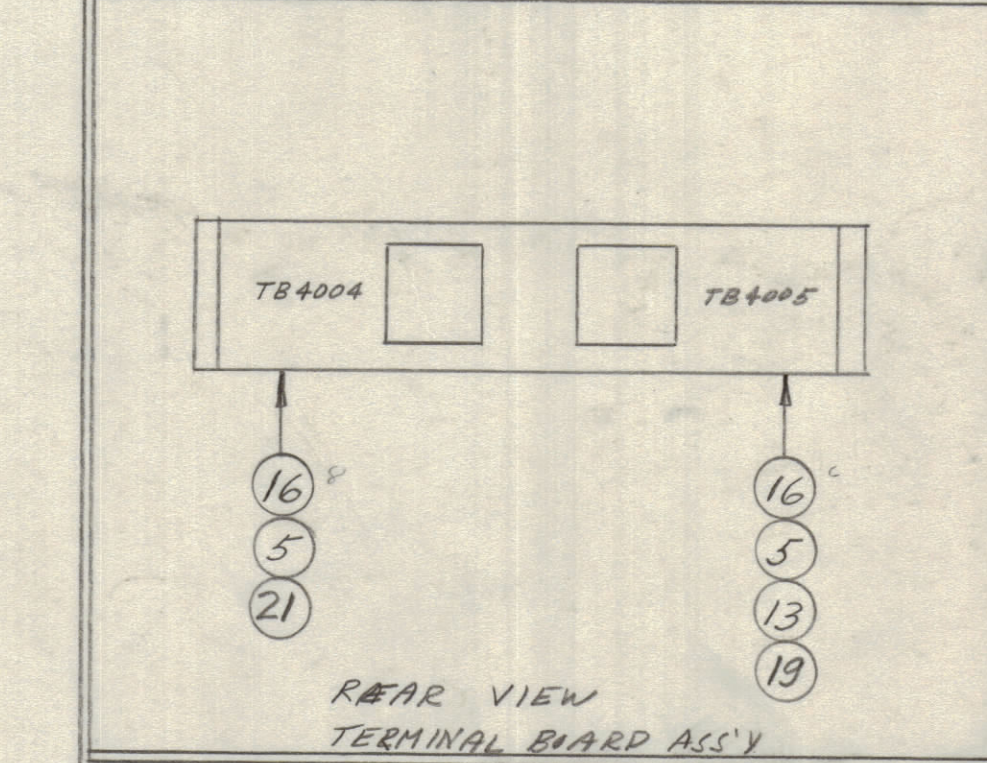
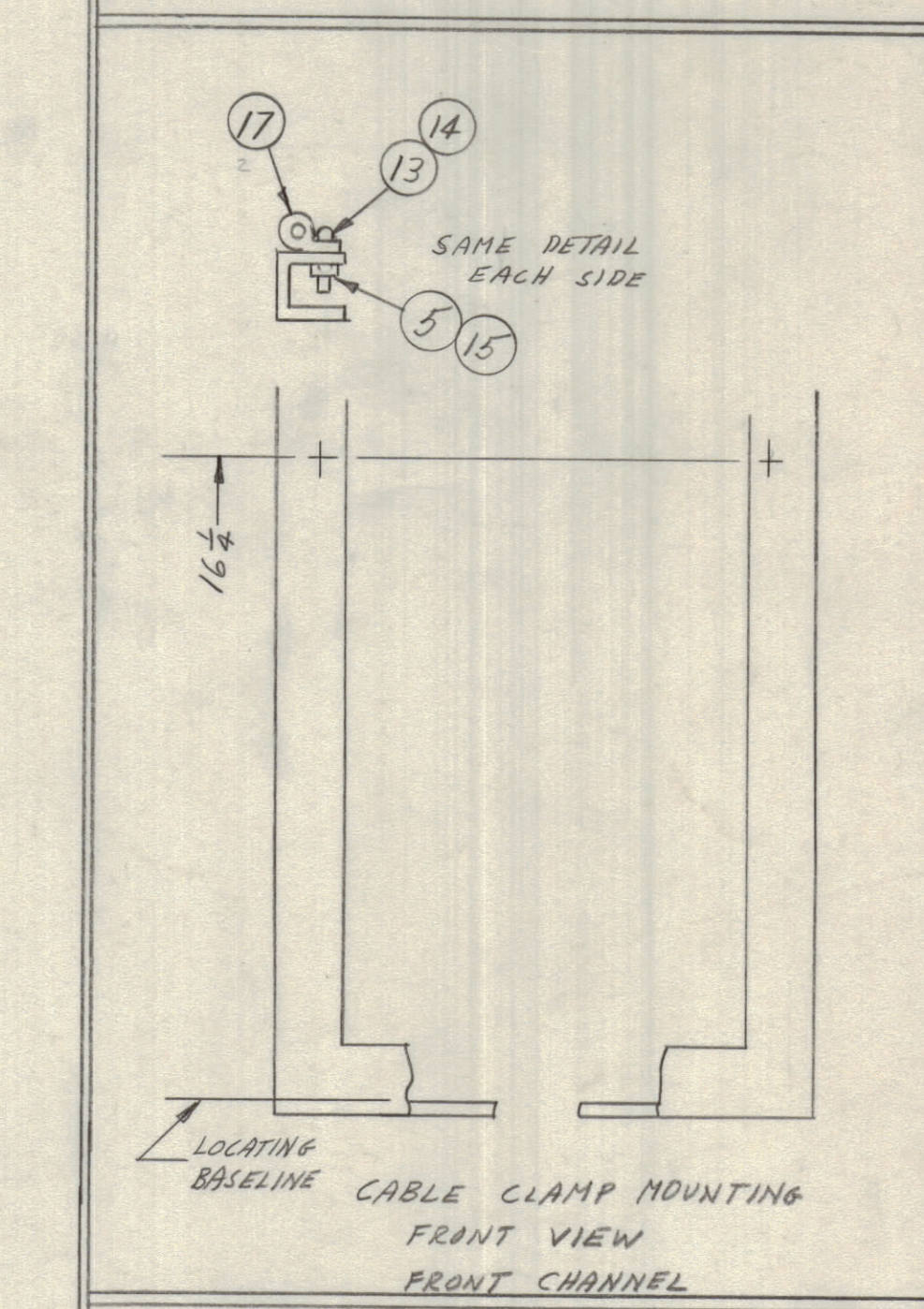
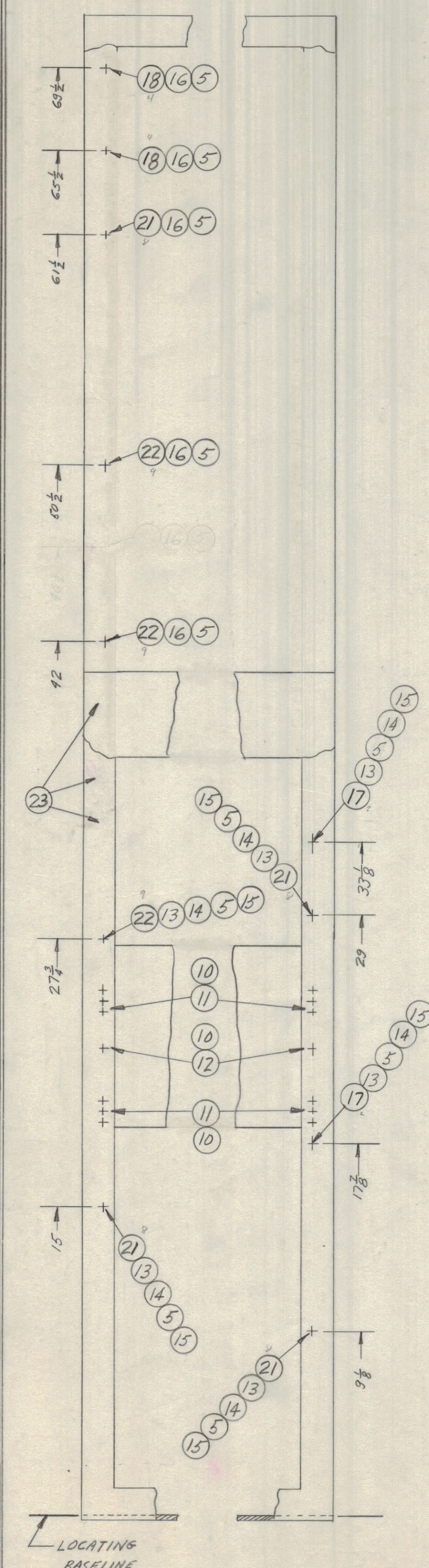
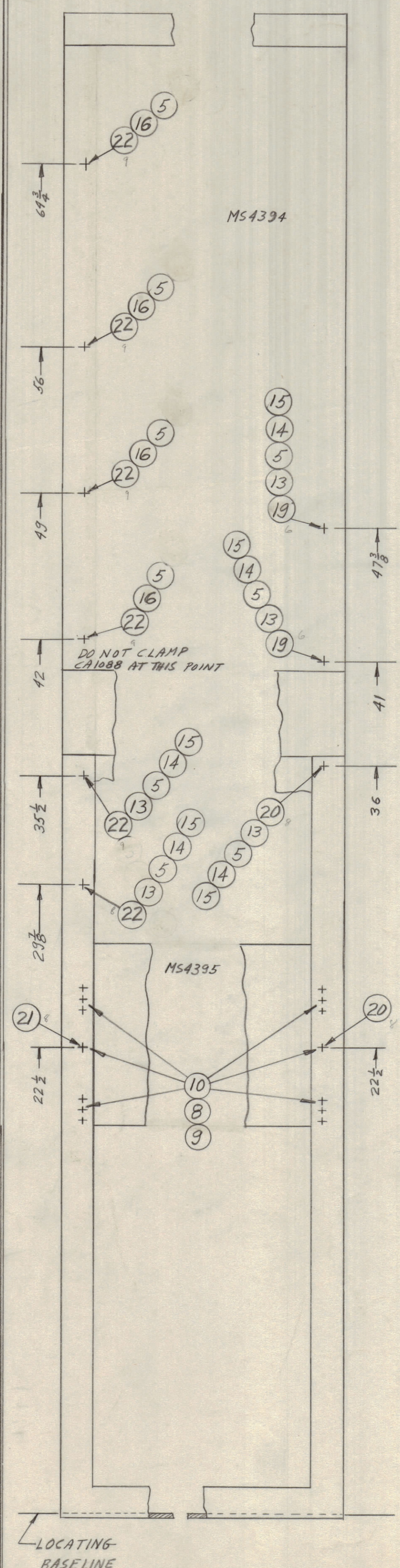
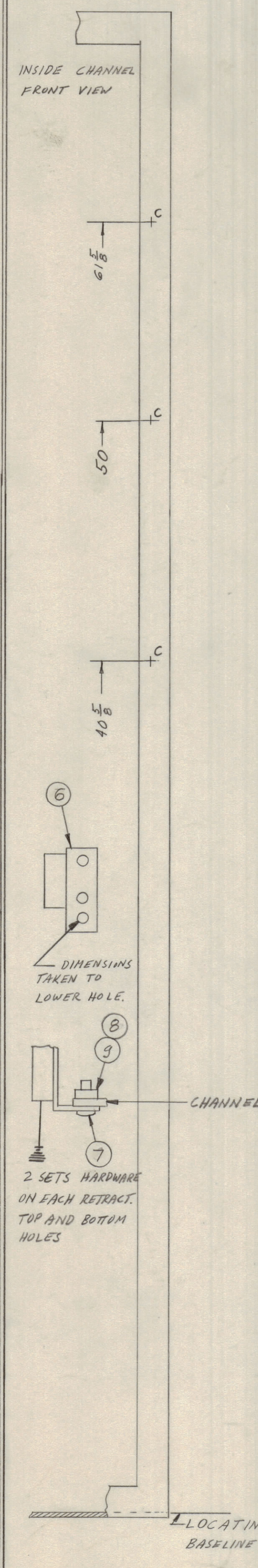
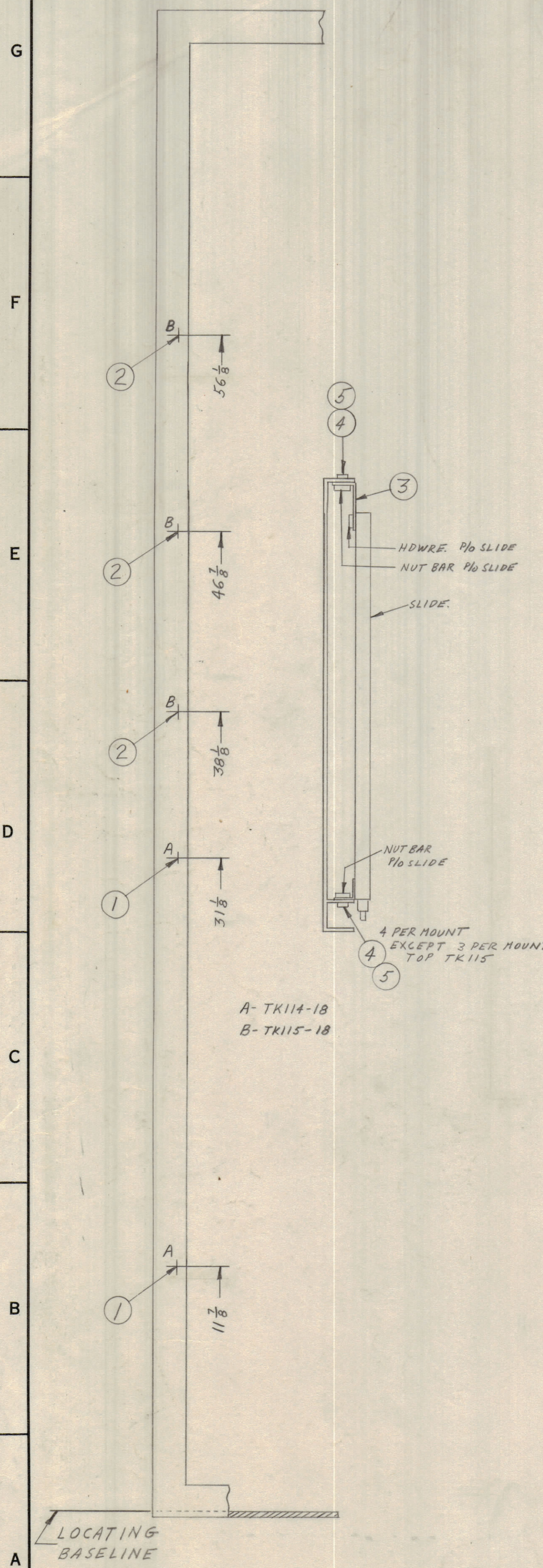


		REVISIONS					
ZONE	SYM	DESCRIPTION	DATE	E.M.N. NO.	DRAFT	CHKD	APPD
	X1	ADDED CENTER SHIELD ASSY.	10/16/65		BM		
	X2	ADDED DESCRIPTIONS TO LIST OF MAT'L	8/26/65		MM		
	X3	IT. 23 WAS CU142-2	4/12/66		SB		
		ORIGINAL RELEASE FOR PRODUCTION	6/28/69		GE		YBC



REQ'D.	ITEM	PART NUMBER	DESCRIPTION	SYMBOL
1	27	CU102-12	CLAMP, LOOP	
1	26	CU102-11	CLAMP, LOOP	
1	25	CU102-10	CLAMP, LOOP	
3	24	TE104-3	TERM. LUG-LK'G	
18	23	CU142-2-9	STRAP, CABLE, ADT	
8	22	CU131-9	CLAMP, LOOP, CUSH	
7	21	CU131-8	CLAMP, LOOP, CUSH	
2	20	CU102-8	CLAMP, LOOP	
4	19	CU102-6	CLAMP, LOOP	
3	18	CU102-4	CLAMP, LOOP	
4	17	CU102-2	CLAMP, LOOP	
16	16	SCBP0832BN6	SCREW, MACHINE	
18	15	NTH0832BN10	NUT, PLN, HEX	
18	14	FW08HBN	WASHER, FLAT	
14	13	SCBP0832BN8	SCREW, MACHINE	
2	12	SCBP1032BN12	SCREW, MACHINE	
28	10	FW10HBN	WASHER, FLAT	
20	9	NTH1032BN12	NUT, PLN, HEX	
20	8	LWE10MRN	WASH. LOCK, EXT	
6	7	SCBH032BN8	SCREW, MACHINE	
3	6	A3517	SPRING, RETRACTING, ASSY.	
26	5	LWE08MRN	WASH. LOCK, EXT	
76	4	SCHH0825NB	SCREW, MACHINE	
10	3	MS4412	ADAPTER, BRKT, REAR	
3	2	TK115-18	TRACK SET, TILT LOCK	
2	1	TK114-18	TRACK SET, FIXED	

MATERIAL		THE TECHNICAL MATERIEL CORP.	
FINISH		MAMARONECK, NEW YORK	
TITLE		INSTALLATION DRAWING AX563	
QTY./UNIT	SCALE	DATE	DATE
1	1/32" (1/16" AS SHOWN)	10/16/65	6/26/69
UNLESS OTHERWISE SPECIFIED DIMENSIONS ARE IN INCHES AND INCLUDE CHEMICALLY APPLIED OR PLATED FINISHES		DRAWN: BM	
DECIMALS: ±.05		CHECKED: MM	
FRACTIONS: ± 1/64		DATE: 1/23/66	
ANGLES: ±.01		DATE: 1/23/66	
TOLERANCES: ±.005		DATE: 1/23/66	
ELECT. DES.		DATE: 1/23/66	
MECH. DES.		DATE: 1/23/66	
SHEET		DATE: 1/23/66	
REV. LTR.		DATE: 1/23/66	

NOTES

ID334

A

REV. LTR.