

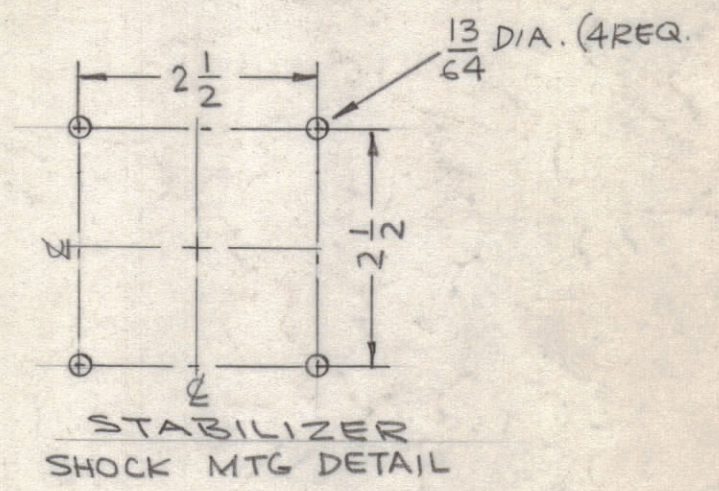
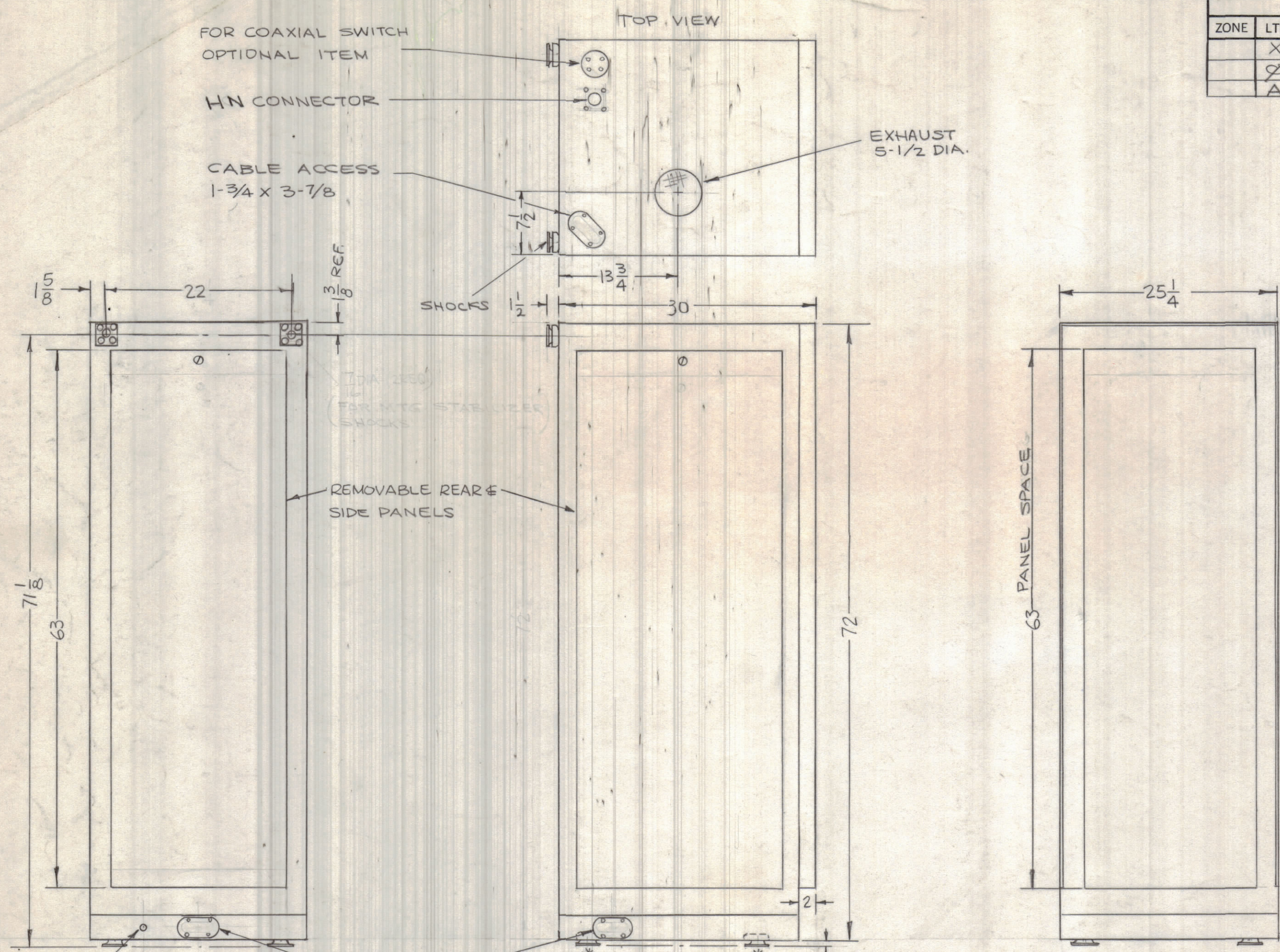
4

3

2

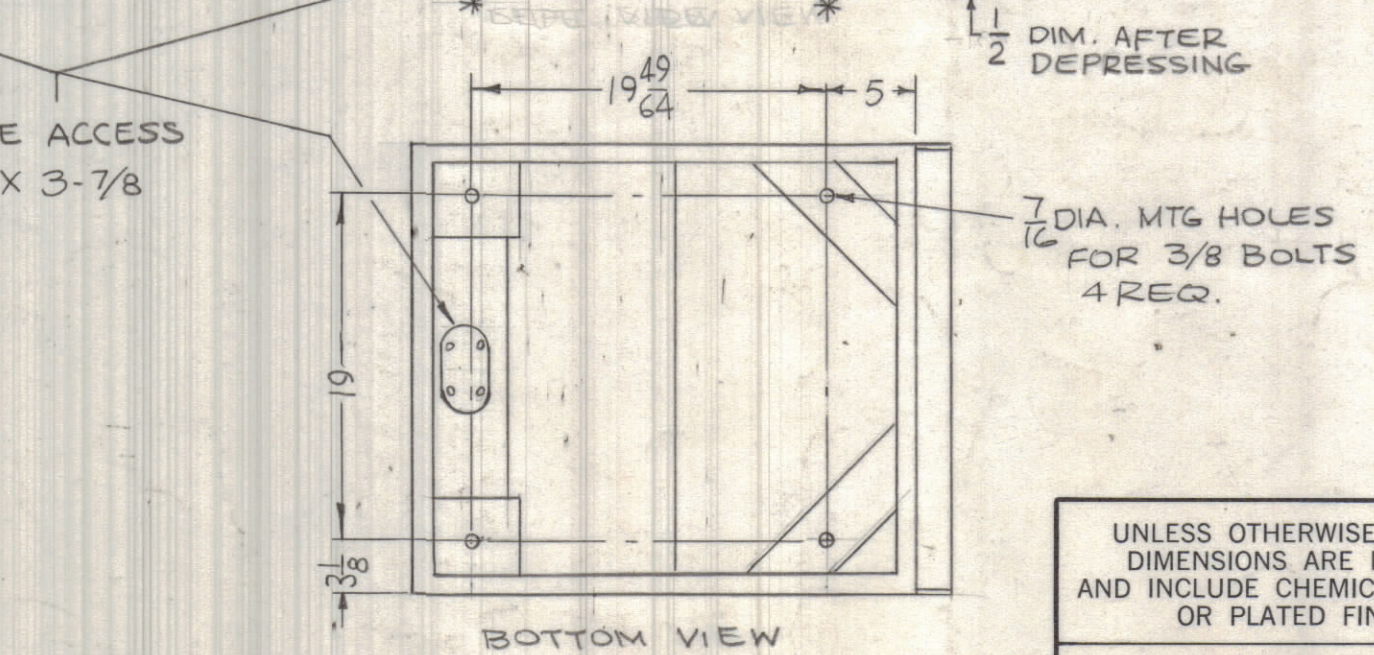
1

| REVISIONS | | | | | | |
|-----------|-----|-------------------------|---------|----------|-------|-----------|
| ZONE | LTR | DESCRIPTION | DATE | E.M.N.NO | DRAFT | CHKD APPD |
| | X | EXP RELEASE | 8-14-67 | | | |
| | Ø | ORIGINAL RELEASE | 8/14/67 | Ø | | |
| | A | HN (CONN) WAS LC (CONN) | 11/1/68 | 19096 | JND | JND EFM |



*APPROXIMATE DEPRESSION OF SHOCKS 1/8".

APPROX WEIGHT OF UNIT 869 LBS



| | | |
|-------------|---------------|-----------|
| 1 | GPTA-2.5JB | |
| QTY / UNIT | MODEL USED ON | ASS'Y NO. |
| APPLICATION | | |
| | CODE | |

NOTICE TO PERSONS RECEIVING THIS DRAWING

THE TECHNICAL MATERIEL CORPORATION claims proprietary right in the material disclosed hereon. This drawing is issued in confidence for engineering information only and may not be reproduced or used to manufacture anything shown hereon without permission from THE TECHNICAL MATERIEL CORPORATION to the user. This drawing is loaned for mutual assistance and is subject to recall at any time.

| QTY. REQ. | ITEM | PART NO. | DESCRIPTION | SYMBOL |
|-----------------------------|------|----------|--|--------|
| F. BUDETTI LIST OF MATERIAL | | | | |
| FINAL APPROVAL | | DATE | THE TECHNICAL MATERIEL CORP. MAMARONECK, NEW YORK | |
| MECH. DES. | | DATE | | |
| ELECT. DES. | | DATE | INSTALLATION, CABINET | |
| CHECKED | | DATE | | |
| DRAWN | | DATE | SCALE 3/32-1" | |
| MATERIAL | | DATE | | |
| FINISH | | | SIZE | ISSUE |
| | | | C 82679 | A |
| | | | CODE IDENT. NO. DWG NO. | OF |
| | | | ID 367 | |
| | | | SHEET | |

4

3

2

1

ID 367 A B

A