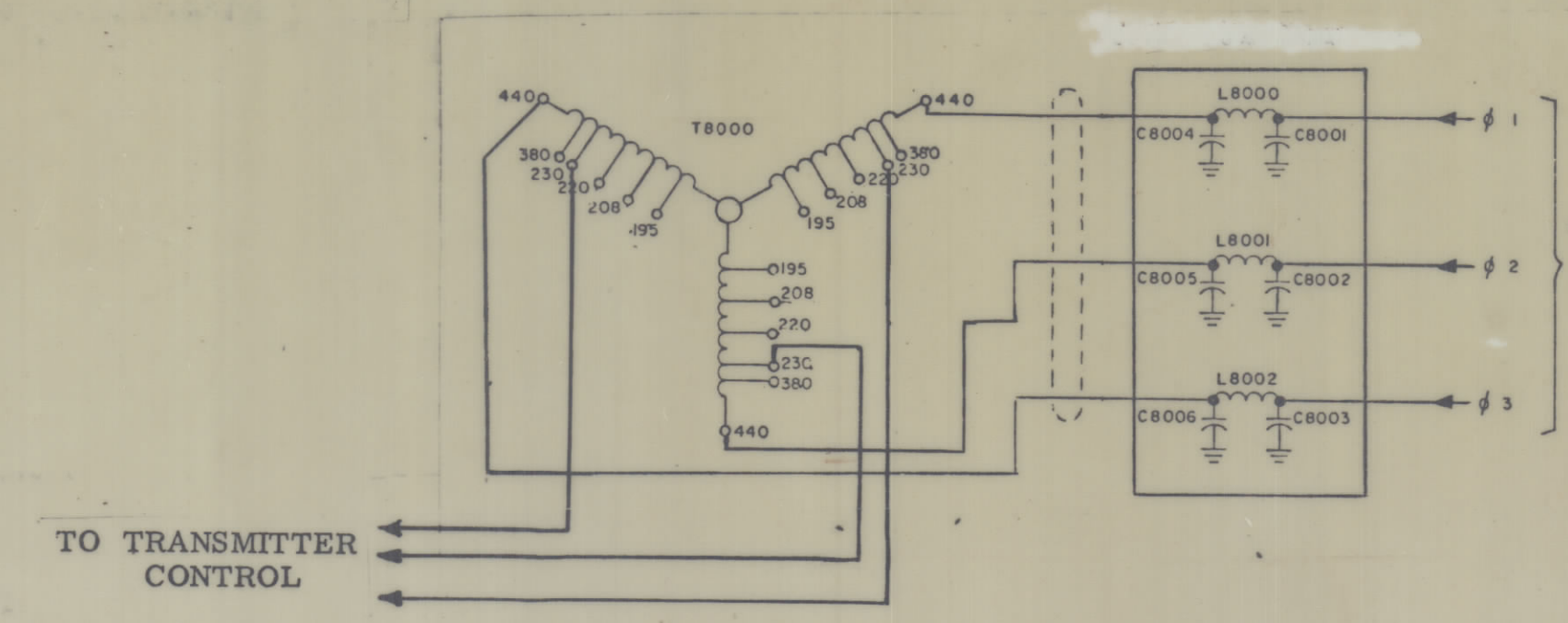
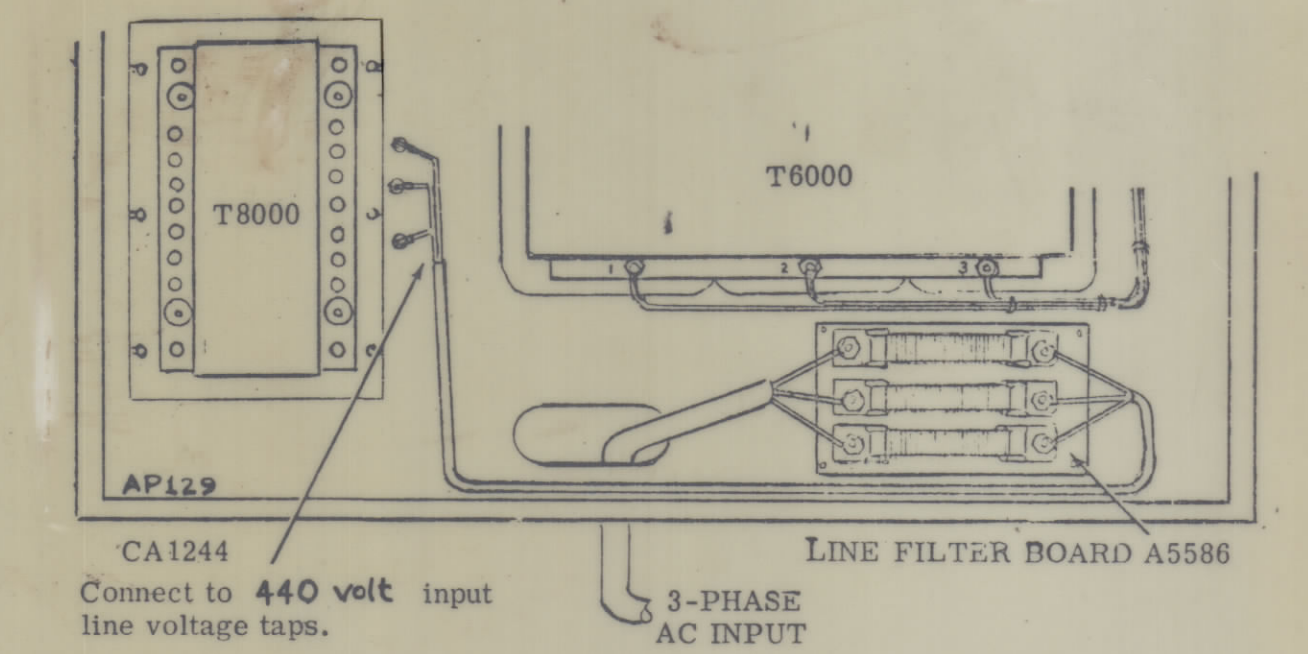
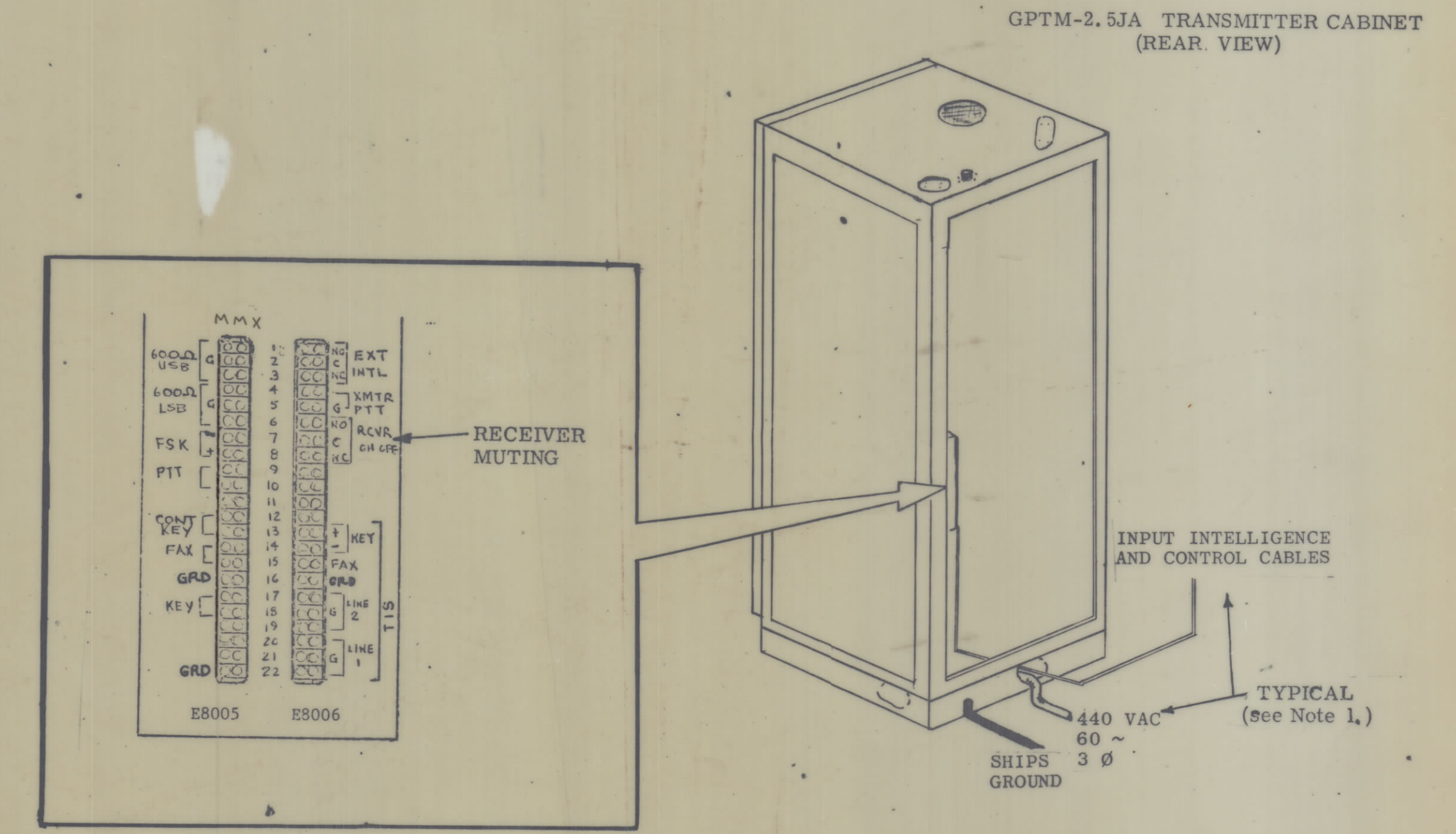
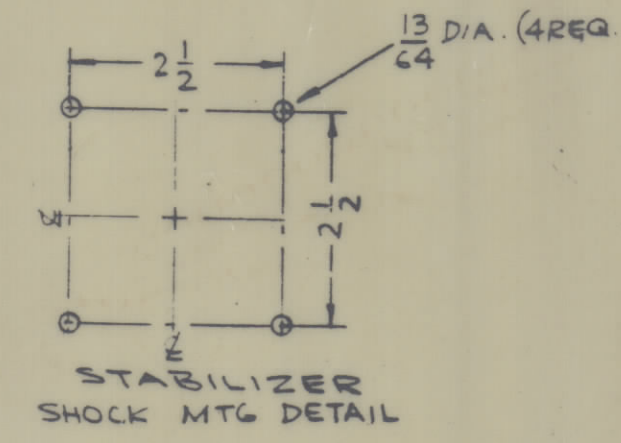
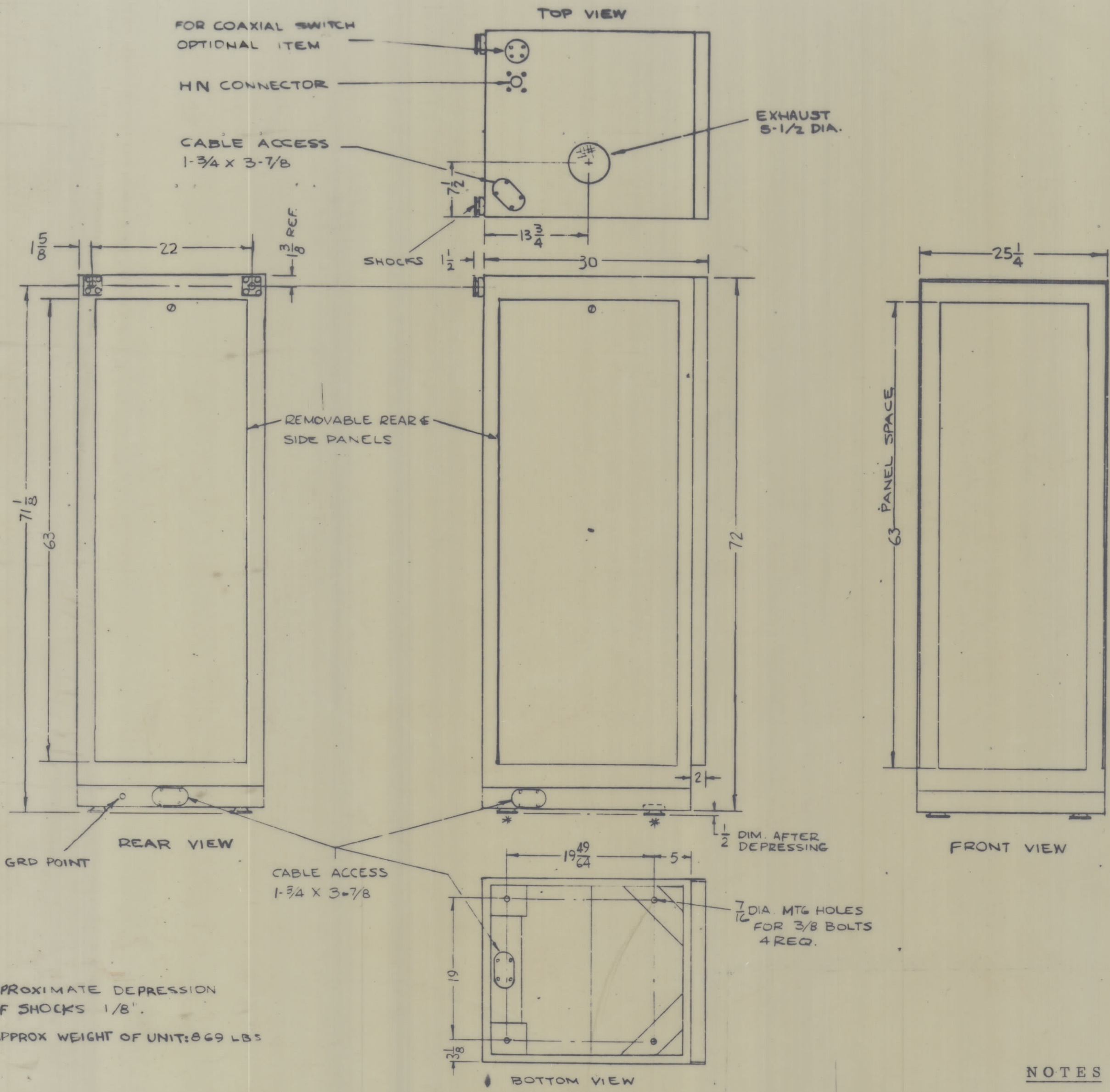


REVISIONS						
ZONE	LTR	DESCRIPTION	DATE	E.M.N. NO.	DRAFT	CHKD. APPD.
	X	EXPERIMENTAL RELEASE	5-2-68			
	Ø	ORIG. RELEASE FOR PRODUCTION	5-3-68			

THE TECHNICAL MATERIEL CORPORATION CERTIFIES  
AS TO THE AUTHENTICITY OF THIS DRAWING



- NOTES**
1. THE 440 VOLT POWER CABLE AND THE INPUT INTELLIGENCE AND CONTROL CABLES MAY BE BROUGHT IN THRU THE; LEFT SIDE, RIGHT SIDE, BOTTOM, OR TOP\* CABLE ACCESS PORTS.  
\* IF THE CABLE IS ROUTED VIA THE TOP ACCESS PORT, THE PORT MUST REMAIN AIR-TIGHT. USE OF DUCT SEAL OR OTHER METHOD MAY BE USED.

\*APPROXIMATE DEPRESSION OF SHOCKS 1/8".  
APPROX WEIGHT OF UNIT: 869 LBS

1	GPTM-2.5JA	GLOBAL MARINE
QTY / UNIT	MODEL USED ON	REF.
APPLICATION		
CODE		
NOTICE TO PERSONS RECEIVING THIS DRAWING		
THE TECHNICAL MATERIEL CORPORATION claims proprietary right in the material disclosed hereon. This drawing is issued in confidence for engineering information only and may not be reproduced or used to manufacture anything shown hereon without permission from THE TECHNICAL MATERIEL CORPORATION to the user. This drawing is loaned for mutual assistance and is subject to recall at any time.		

QTY. REQ.	ITEM	PART NO.	DESCRIPTION	SYMBOL
LIST OF MATERIAL				
THE TECHNICAL MATERIEL CORP. MAMARONECK, NEW YORK				
INSTALLATION, TRANSMITTER (GPTM-2.5JA -- GLOBAL MARINE)				
MATERIAL			SIZE	CODE IDENT. NO. DWG NO.
FINISH			D 82679	ID 370
			SCALE	SHEET 1 OF 1

B ID 370