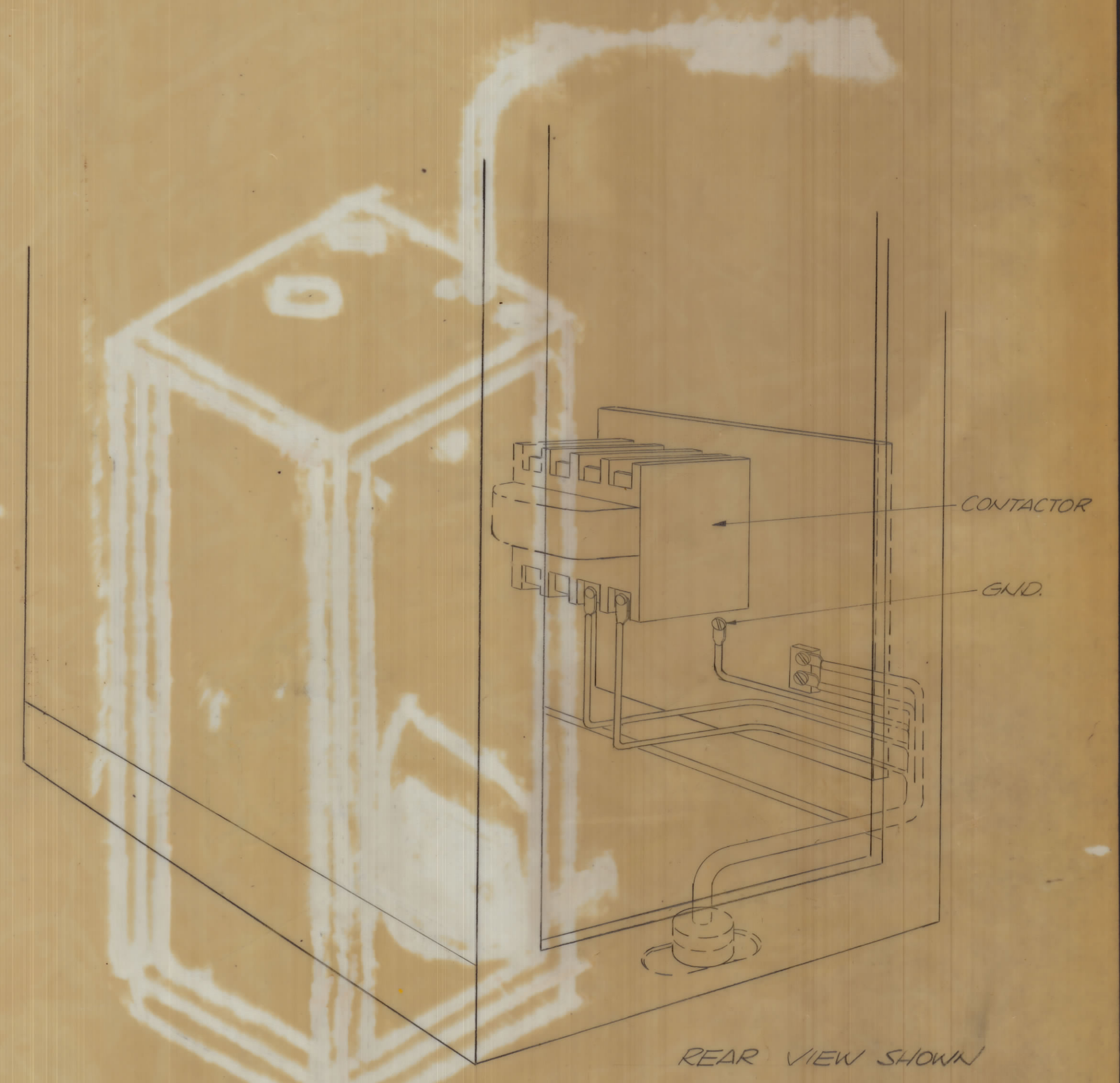
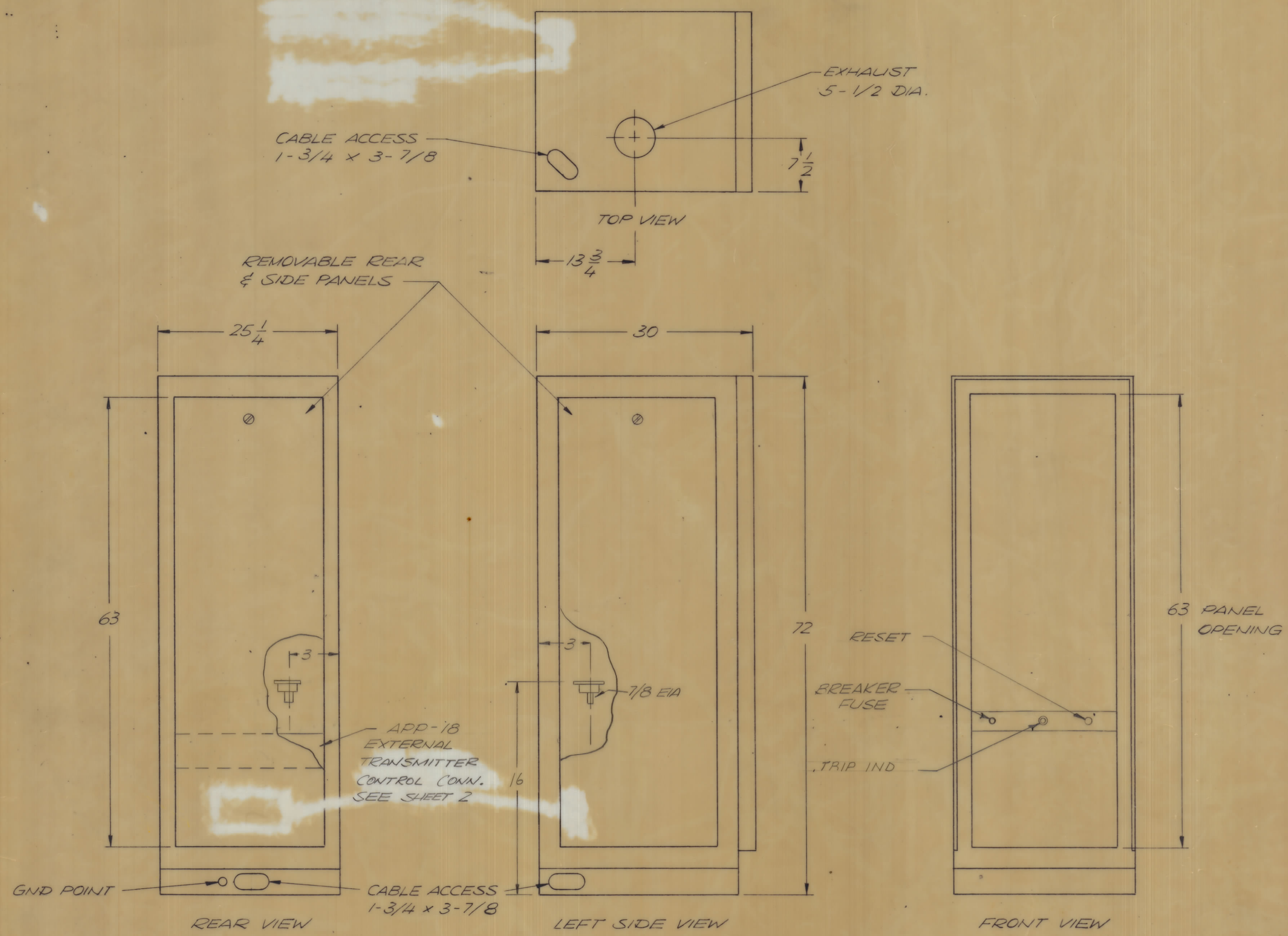
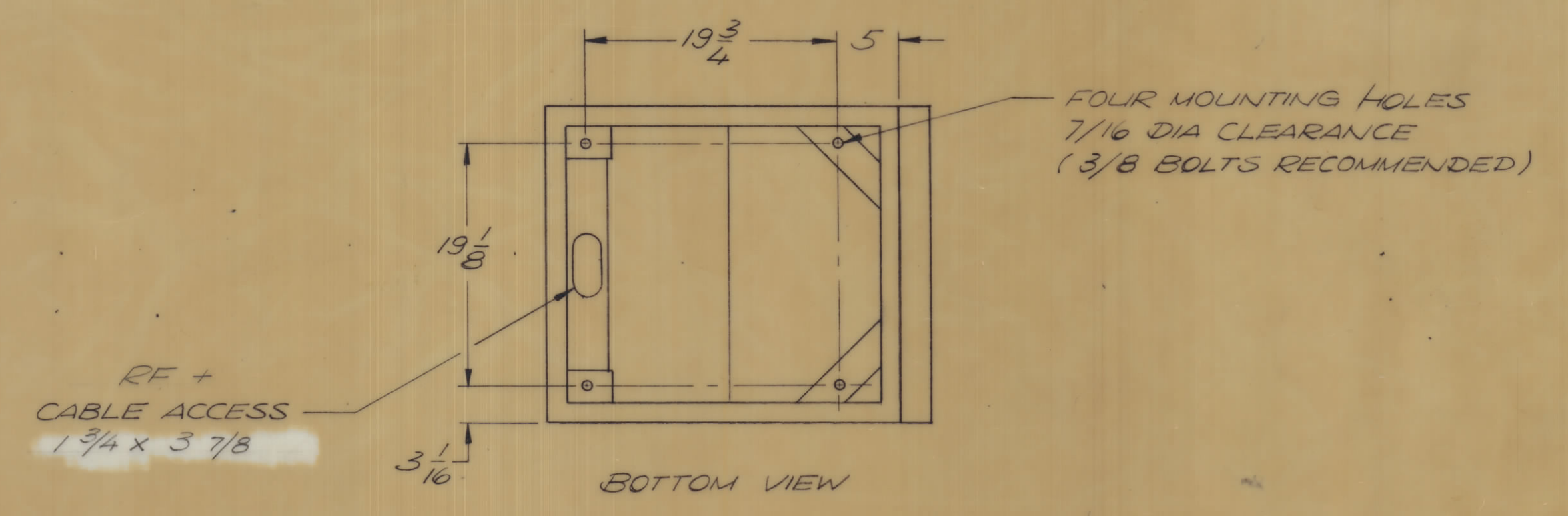


REVISIONS					DATE	APPROVED
E.M.N.O	DRAFT	CHKD	ZONE	LTR	DESCRIPTION	
	GE	CP		X1	ADD REAR VIEW HOOKUP	2/17/71
	CP	CP		0	ORIGINAL RELEASE FOR PRODUCTION	2/17/71



UNIT DATA
 POWER REQD. — 3 KW
 WEIGHT — 600 LBS.
 VOLTAGE — 220/380 V AC
 FREQUENCY — 50 Hz ± 5%



DRAWN <i>[Signature]</i>	PAGE EUROPA S.p.A. ROME ITALY	
TRACED		
CHECKED <i>[Signature]</i>		
APPROVED ENG. R <i>[Signature]</i>		
DATE / /		
PROJ. APPROVED		
DATE / /		
REPLACE DRWG. N°	DATE	DRAWING NUMBER
		ID 381
REPLACED BY DRWG N°	DATE	SCALES
		NONE
		SHEET 1 OF 2
PORTUGAL	SECRETARIADO DA DEFESA NACIONAL	ARQUIVO GEOME DES N°
NATO	CEI-OTAN	C.E.Q.M.E. FOLHA DE
VIII-IX-XI SLICES	SYM 1200	
CONFERIDO / /	CLASSIF DE SEGURANÇA	
APROVADO / /		