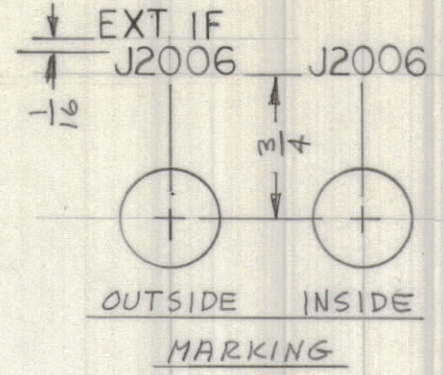
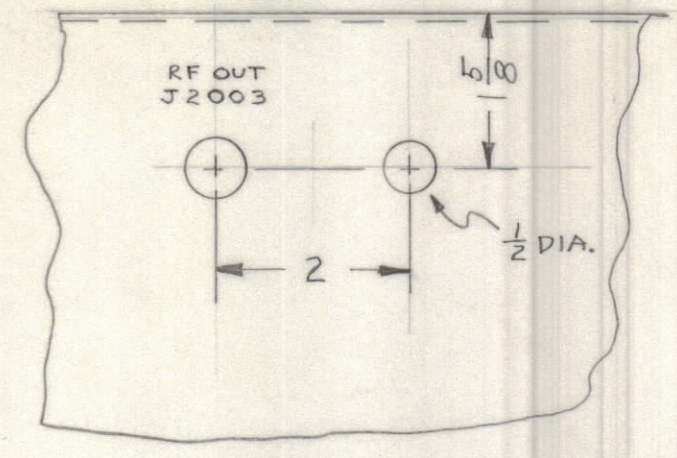
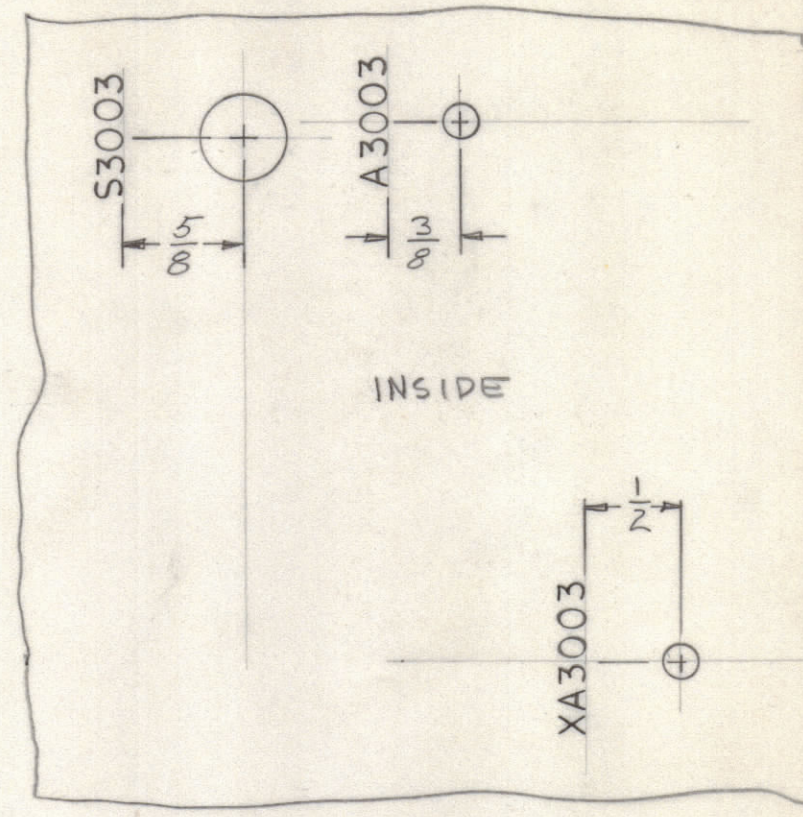
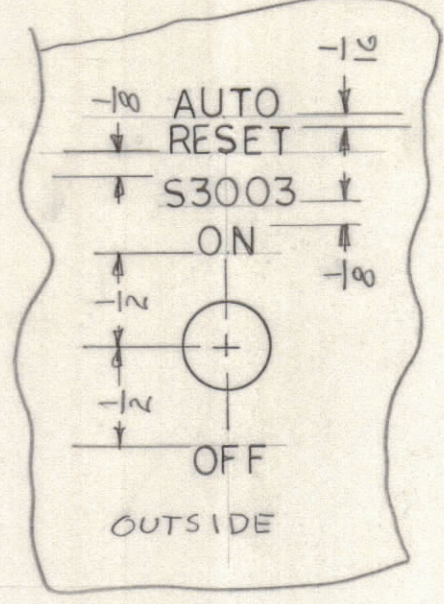
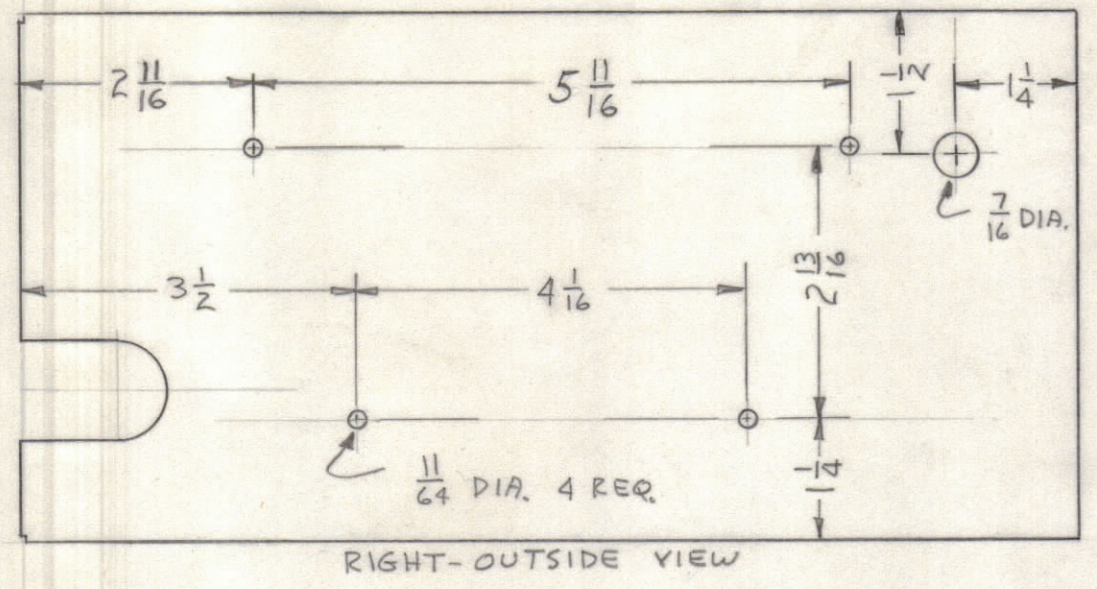


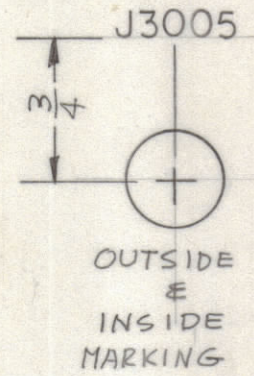
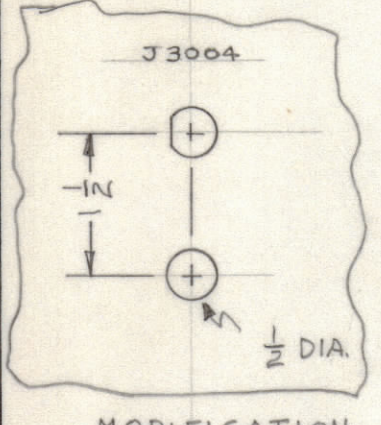
REVISIONS							
E.M.N.O	DRAFT	CHKD	ZONE	LTR	DESCRIPTION	DATE	APPROVED
	①			Ø	ORIGINAL RELEASE FOR PRODUCTION	9/21/70	



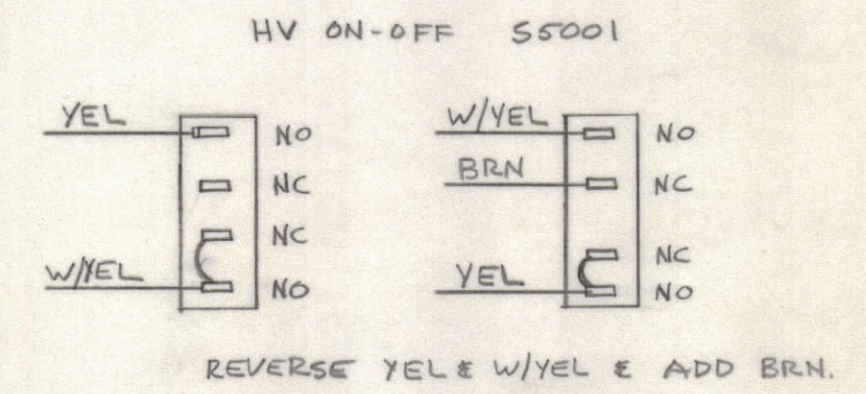
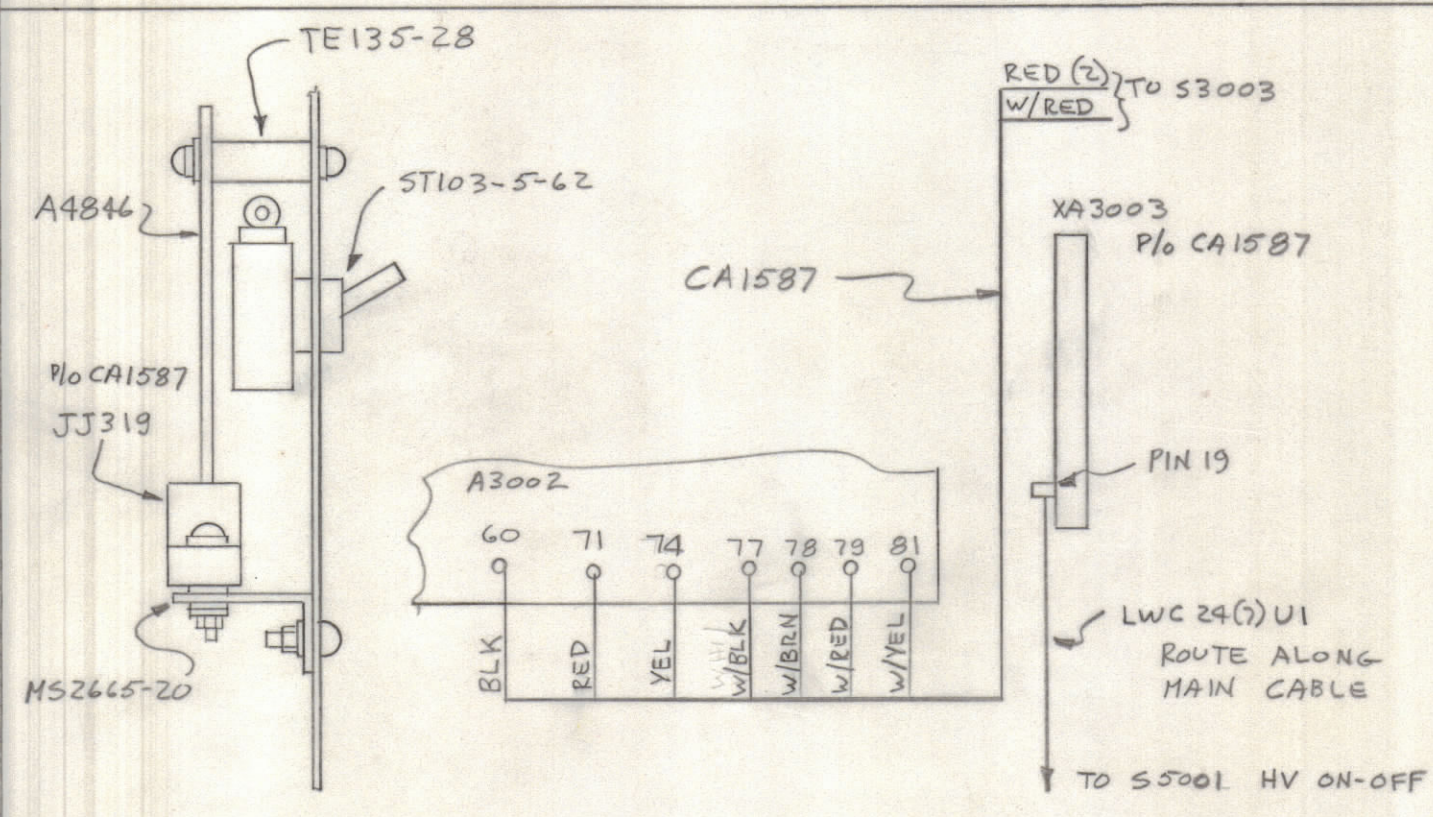
MODIFICATION
LD2368/MS5592 REAR PANEL AX5110-2 EXC. DWR



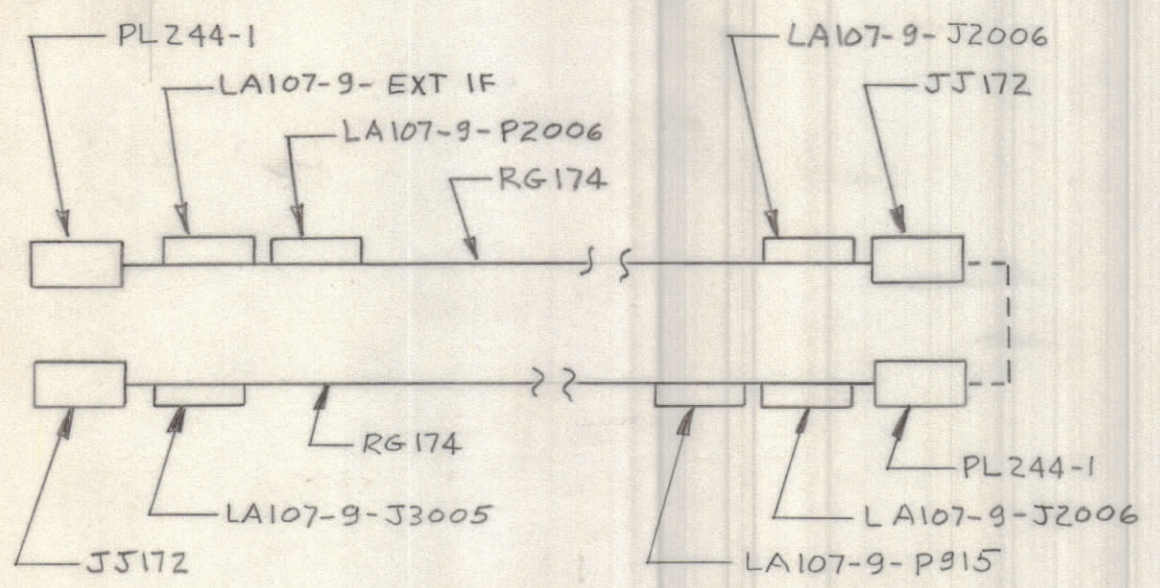
MODIFICATION
LD2372/MS5542 AUDIO INPUT CHASSIS AX5101



MODIFICATION
LD2372/MS5542 AUDIO INPUT CHAS.
OUTSIDE VIEW AX5101



AUTO. OVLD. RESET MODIFICATION



WIRING DIAGRAM
EXT IF INSTALLATION

1	MCTM-10KE	BMA 442
QTY / UNIT	MODEL USED ON	ASS'Y NO.
APPLICATION		
CODE		

NOTICE TO PERSONS RECEIVING THIS DRAWING
THE TECHNICAL MATERIEL CORPORATION claims proprietary right in the material disclosed hereon. This drawing is issued in confidence for engineering information only and may not be reproduced or used to manufacture anything shown hereon without permission from THE TECHNICAL MATERIEL CORPORATION to the user. This drawing is loaned for mutual assistance and is subject to recall at any time.

UNLESS OTHERWISE SPECIFIED DIMENSIONS ARE IN INCHES AND INCLUDE CHEMICALLY APPLIED OR PLATED FINISHES

TOLERANCES ON
 DECIMALS .X ± .05
 .XX ± .01
 .XXX ± .005
 FRACTIONS ± 1/64
 ANGLES ± 0° -30'

QTY. REQ.	ITEM	PART NO.	DESCRIPTION	SYMBOL		
LIST OF MATERIAL						
FINAL APPROVAL		DATE	THE TECHNICAL MATERIEL CORP. MAMARONECK, NEW YORK INSTALLATION DRAWING CUST. SPEC. MOD. PKG. BMA 442			
MECH. DES.		DATE				
ELECT. DES.		DATE				
CHECKED		DATE				
DRAWN		DATE	SIZE	CODE IDENT NO.	DWG NO.	ISSUE
			C	82679	ID 389	Ø
MATERIAL			SCALE	SHEET		OF
FINISH						

ID 389

B

A