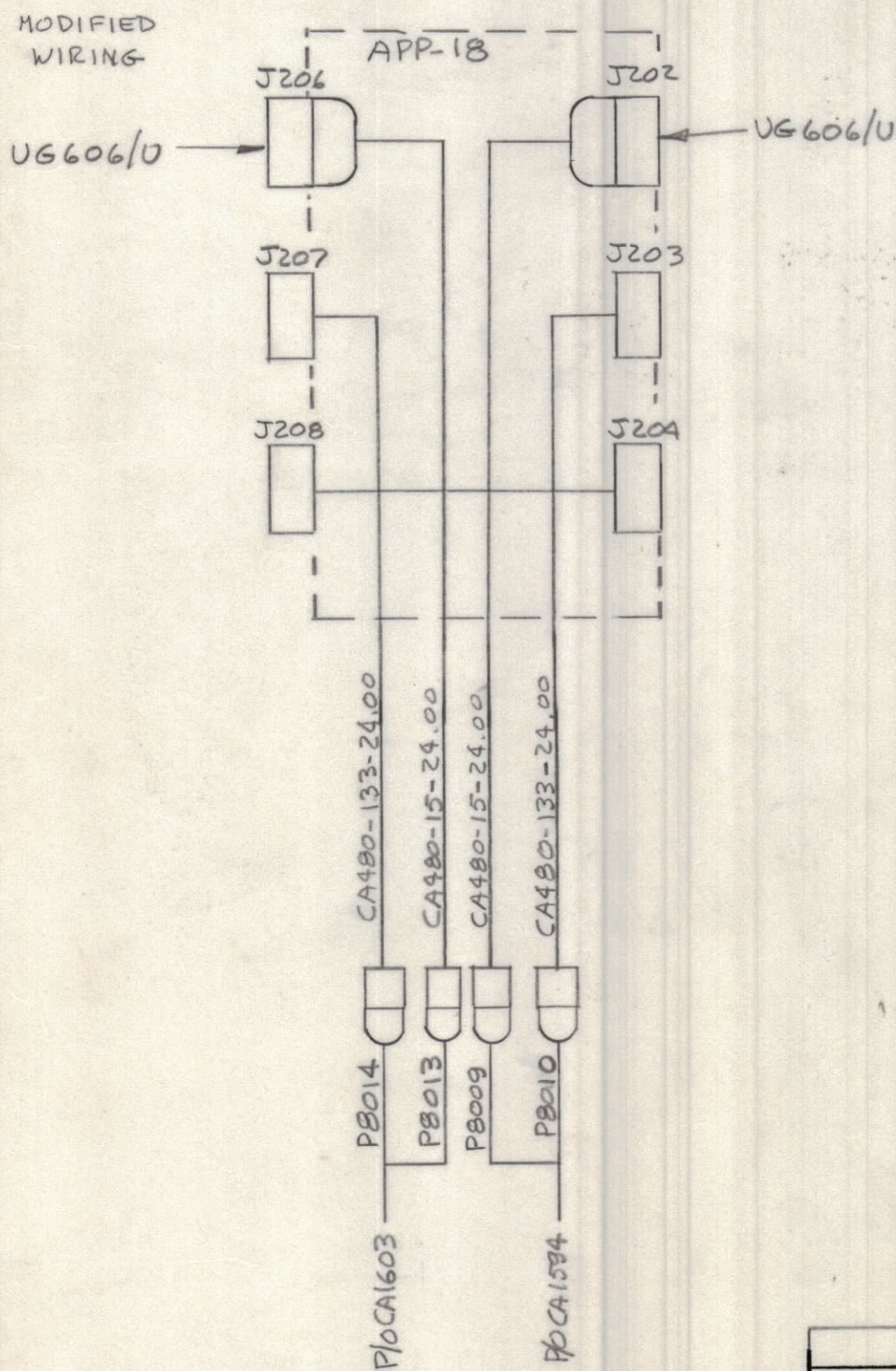
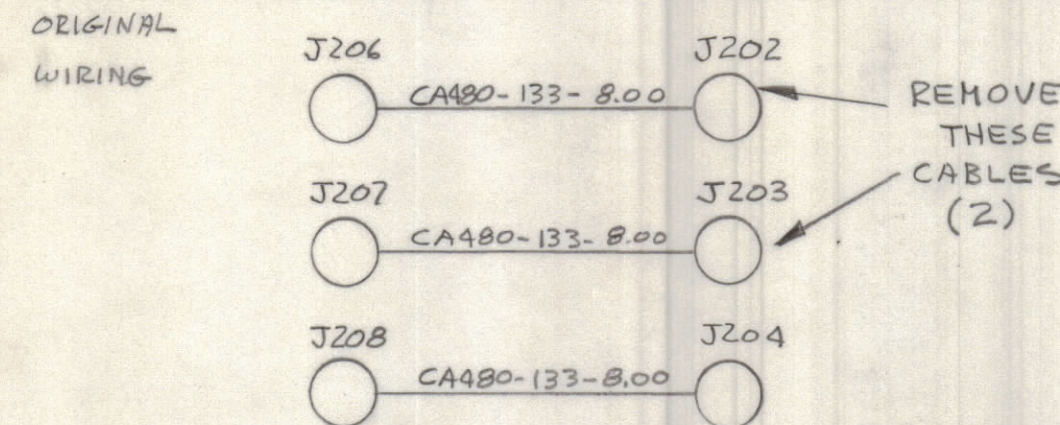
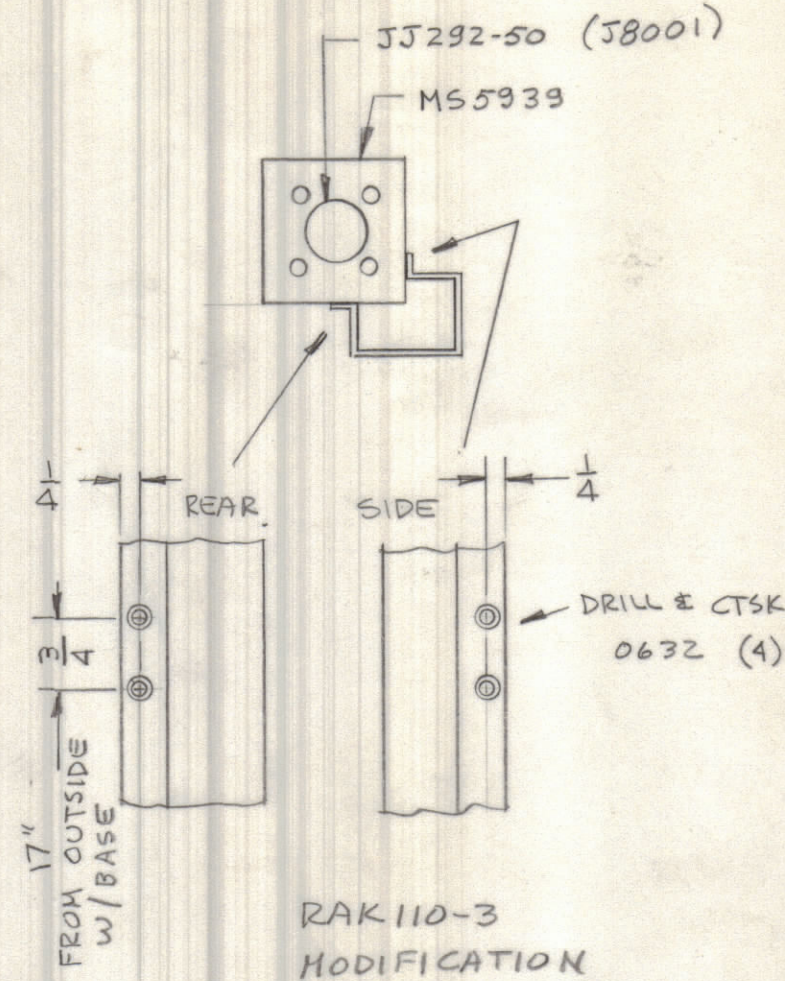


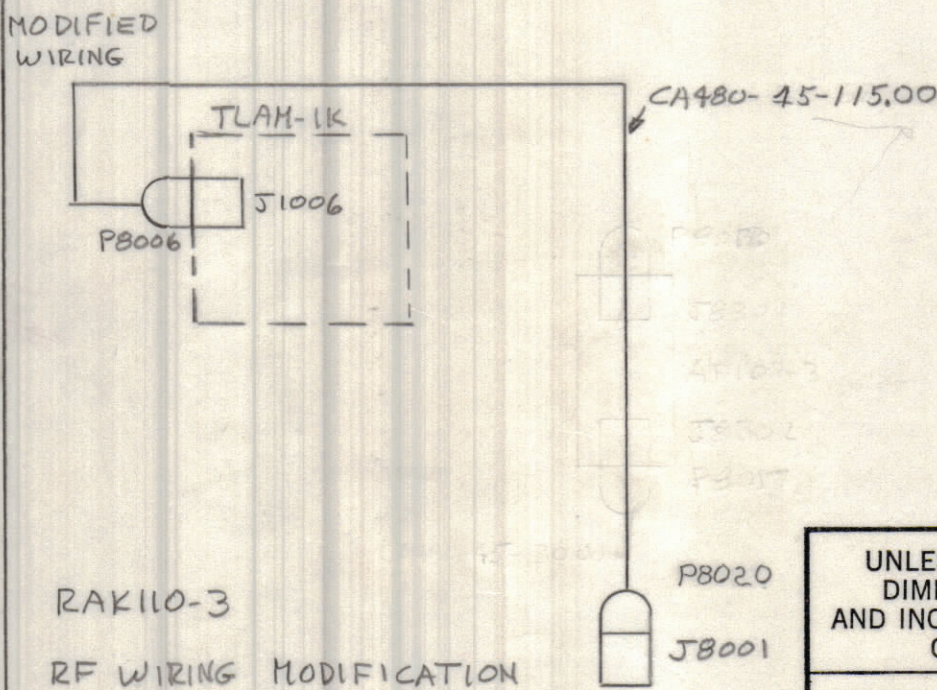
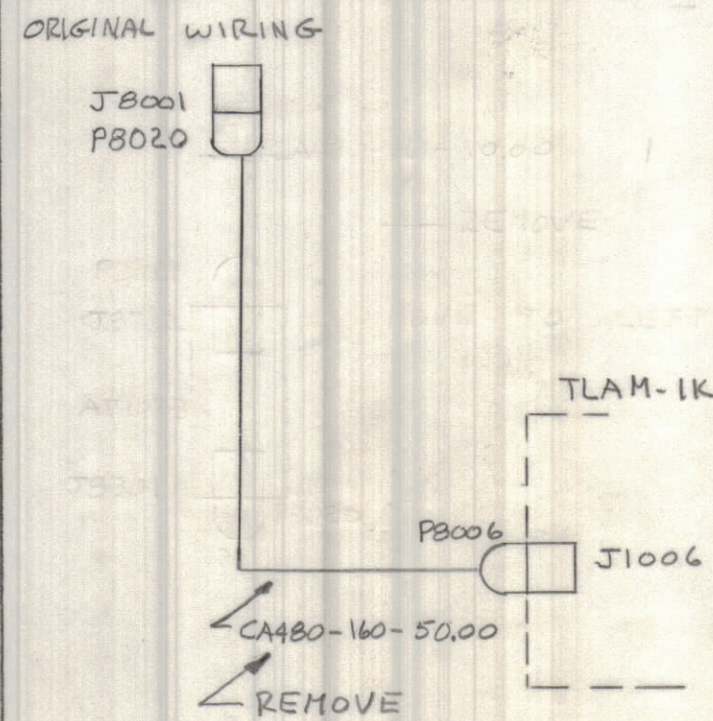
APP-18 CHASSIS MODIFICATION
LD 2407/MS 5643



APP-18
WIRING MODIFICATIONS



RAK110-3
MODIFICATION



QTY / UNIT	SYM 1200	BMA 455
	MODEL USED ON	ASS'Y NO.
APPLICATION		
	CODE	
NOTICE TO PERSONS RECEIVING THIS DRAWING THE TECHNICAL MATERIEL CORPORATION claims proprietary right in the material disclosed hereon. This drawing is issued in confidence for engineering information only and may not be reproduced or used to manufacture anything shown hereon without permission from THE TECHNICAL MATERIEL CORPORATION to the user. This drawing is loaned for mutual assistance and is subject to recall at any time.		

REVISIONS							
E.M.N.NO	DRAFT	CHKD	ZONE	LTR	DESCRIPTION	DATE	APPROVED
	0			0	ORIGINAL RELEASE FOR PRODUCTION	3/4/71	P.E.J.
20257	RZ	W			CHG. MOD. & ORIG. WIRING	3-2-71	P.E.J.

ORIGINAL	MODIFIED
TLAM-1K	TLAM-1K
MS5499-1 MHXM-2	MS5499-1 MHXM-2
MS5499-6	MS5499-6
MS5499-6	MS5499-6
MS5499-3	MS5499-2
API49	API49
APP18	APP18
API50	AX5120 API50

TRASHITTER CONFIGURATION
MODIFICATION

INSTALL AX5125 AS PER ID 381

QTY. REQ.	ITEM	PART NO.	DESCRIPTION	SYMBOL
BUDETTI LIST OF MATERIAL				
FINAL APPROVAL		DATE	THE TECHNICAL MATERIEL CORP. MAMARONECK, NEW YORK	
MECH. DES.		DATE	INSTALLATION DWG	
ELECT. DES.		DATE	CUSTOMER SPECIFICATION MODIFICATION PKG BMA 455 SYM 1200 HFTM-1KJ	
CHECKED		DATE	SIZE	ISSUE
DRAWN		DATE	CODE IDENT NO.	DWG NO.
MATERIAL			C 82679	ID 392
FINISH			SCALE	SHEET OF

ID 392
A
B

A