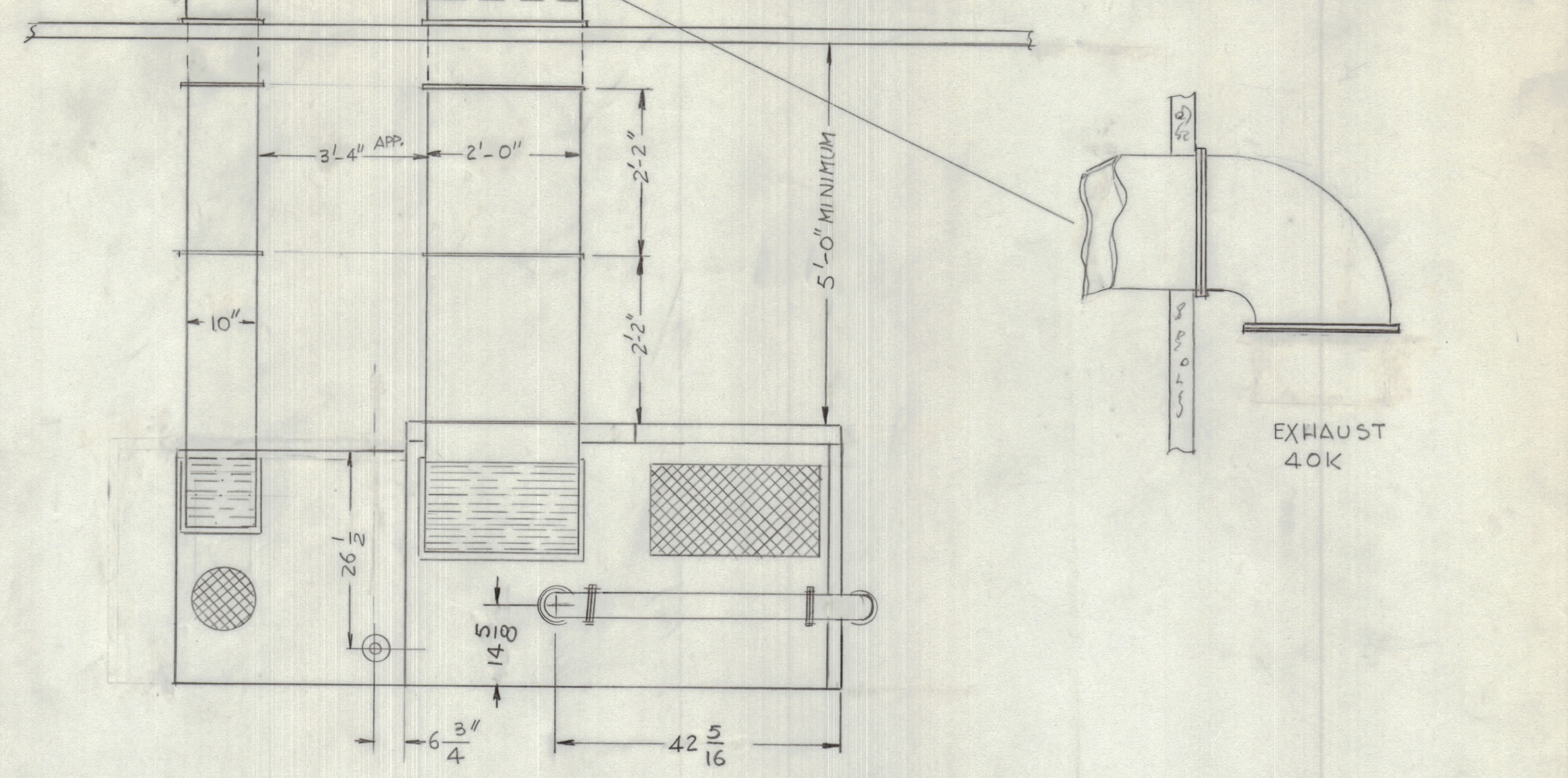
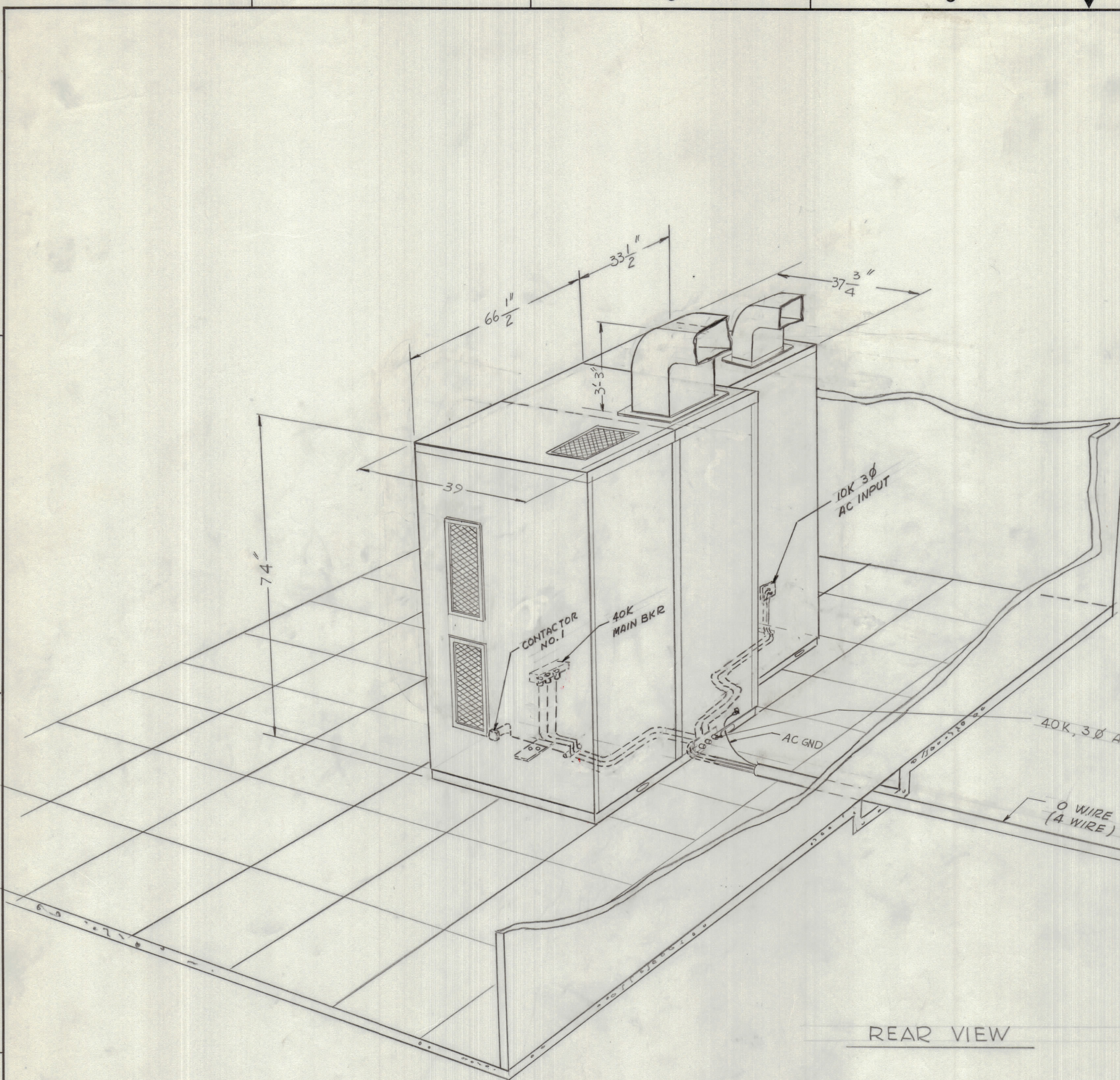


E.M.N.O		DRAFT		CHKD		ZONE		LTR		REVISIONS	
DESCRIPTION										DATE	APPROVED
ORIGINAL RELEASE FOR PRODUCTION										3-16-77	✓



TOP VIEW

INSTALLATION AND DUCT DIM'S ARE TYPICAL AND VARY TO CUSTOMER REQUIREMENTS

REAR VIEW

MAIN POWER DISCONNECT SWITCH BOX CAPABLE OF 350 AMPS PER Ø FUSED 230 VAC OR CIRCUIT BREAKER, PROTECTED CIRCUIT BREAKER, IF USED SHOULD HAVE LONG TRIP DELAY CURVE.

TO CUSTOMER POWER

QTY / UNIT	MODEL USED ON	ASS'Y NO.
APPLICATION		
CODE		
NOTICE TO PERSONS RECEIVING THIS DRAWING		
THE TECHNICAL MATERIEL CORPORATION claims proprietary right in the material disclosed hereon. This drawing is issued in confidence for engineering information only and may not be reproduced or used to manufacture anything shown hereon without permission from THE TECHNICAL MATERIEL CORPORATION to the user. This drawing is loaned for mutual assistance and is subject to recall at any time.		

UNLESS OTHERWISE SPECIFIED DIMENSIONS ARE IN INCHES AND INCLUDE CHEMICALLY APPLIED OR PLATED FINISHES	
DECIMALS	FRACTIONS
.X ± .05	± 1/64
.XX ± .01	ANGLES
.XXX ± .005	± 0° -30'

QTY. REQ.	ITEM	PART NO.	DESCRIPTION	SYMBOL
LIST OF MATERIAL				
FINAL APPROVAL		DATE	THE TECHNICAL MATERIEL CORP.	
MECH. DES.		DATE	MAMARONECK, NEW YORK	
ELECT. DES.		DATE	POWER AND DUCT	
CHECKED		DATE	INSTALLATION	
DRAWN		DATE	HFTM-40K	
MATERIAL		SIZE	CODE IDENT NO.	DWG NO.
FINISH		D	82679	ID 434
		SCALE	NONE	SHEET 2 OF 3