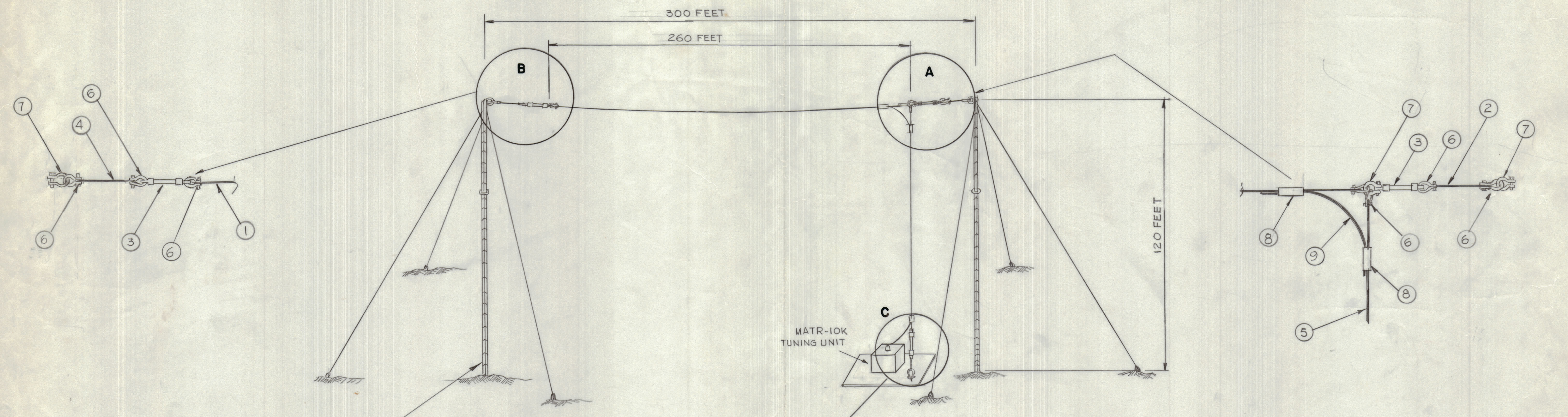
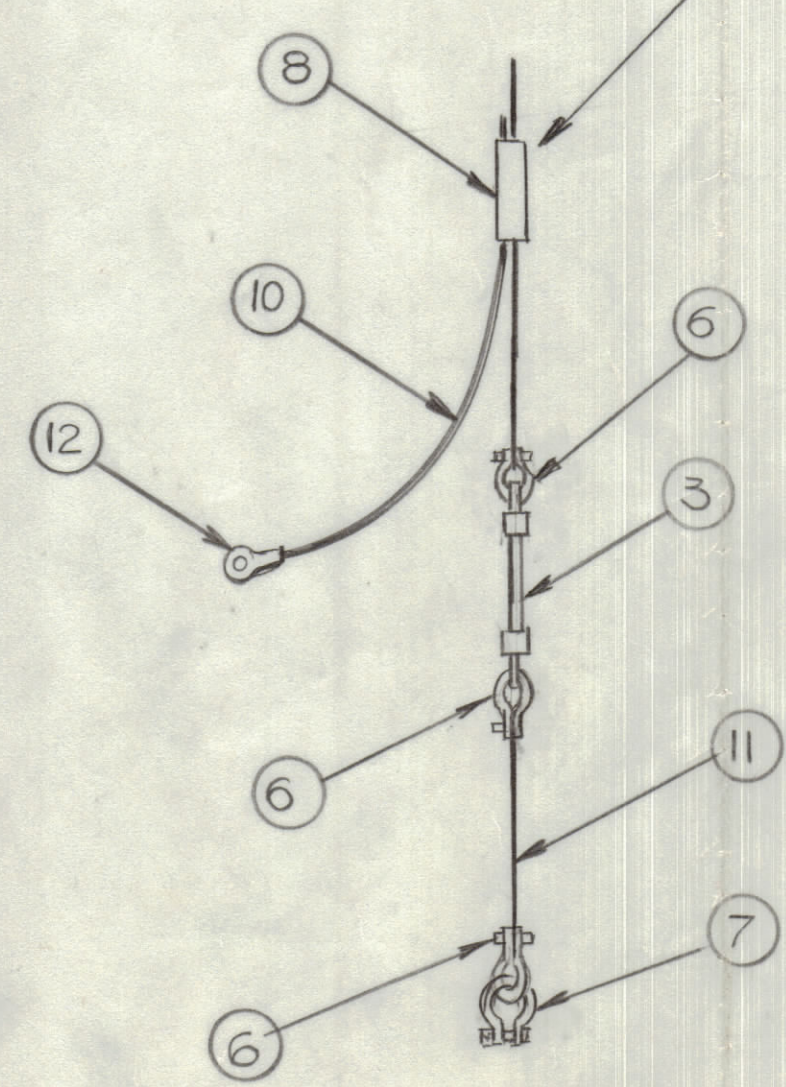


				REVISIONS			
E.M.N.O	DRAFT	CHKD	ZONE	LTR	DESCRIPTION	DATE	APPROVED



TOWERS & GUYS TO BE SUPPLIED BY CUSTOMER

1. Assemble section "A" and attach to tower. The tower should contain a pad or eye bolt with 3/4" hole capable of withstanding a horizontal load of 750 lbs.
2. Attach section "B" to other tower. Adjust sag of antenna by reducing the length of item 4 until sag is reduced to 9 ft. at 100 degrees F, 7 ft. at 80° F, 6 ft. at 60° F or until the horizontal tension increases to 300 lbs.
3. Attach section "C" and adjust the length of item 5 until the tension on the vertical section of the antenna is approximately 20 pounds.



QTY. REQ.	ITEM	PART NO.	DESCRIPTION	SYMBOL
	1	12	TE 197-6-50	LUG
2FT	11	WL 104-5	ANTENNA WIRE PHOSPHER BRONZE #6	
3FT	10	WL 104-5	ANTENNA WIRE PHOSPHER BRONZE #6	
2FT	9	WL 104-5	ANTENNA WIRE PHOSPHER BRONZE #6	
3	8	CU*3471T12	WIRE CLAMP 3/16"	
4	7	CU*3558T47	SHACKLE 3/8"	
10	6	CU*3467T16	THIMBLE CLAMP	
120FT	5	WL104-5'	ANTENNA WIRE PHOSPHER BRONZE #6	
35FT	4	WL 104-5	ANTENNA WIRE PHOSPHER BRONZE #6	
3	3	NS*9652	INSULATOR STRAIN 12"	
22FT	2	WL 104-5	ANTENNA WIRE PHOSPHER	
262FT	1	WL 104-5	ANTENNA WIRE PHOSPHER BRONZE #6	

FINAL APPROVAL		DATE
MECH. DES.		DATE
ELECT. DES.		DATE
CHECKED		DATE
DRAWN	G.D.L.	DATE 5-27-77

THE TECHNICAL MATERIEL CORP.
MAMARONECK, NEW YORK

LONG WIRE TRANSMITTER
ANTENNA 450-525 KHZ

SIZE	CODE	IDENT NO.	DWG NO.	ISSUE
D	82679	ID 438		

SCALE: NOT TO SCALE SHEET OF

DTA-II		
QTY / UNIT	MODEL USED ON	ASS'Y NO.
APPLICATION		
CODE		
MATERIAL		
FINISH		

NOTICE TO PERSONS RECEIVING THIS DRAWING
THE TECHNICAL MATERIEL CORPORATION claims proprietary right in the material disclosed hereon. This drawing is issued in confidence for engineering information only and may not be reproduced or used to manufacture anything shown hereon without permission from THE TECHNICAL MATERIEL CORPORATION to the user. This drawing is loaned for mutual assistance and is subject to recall at any time.