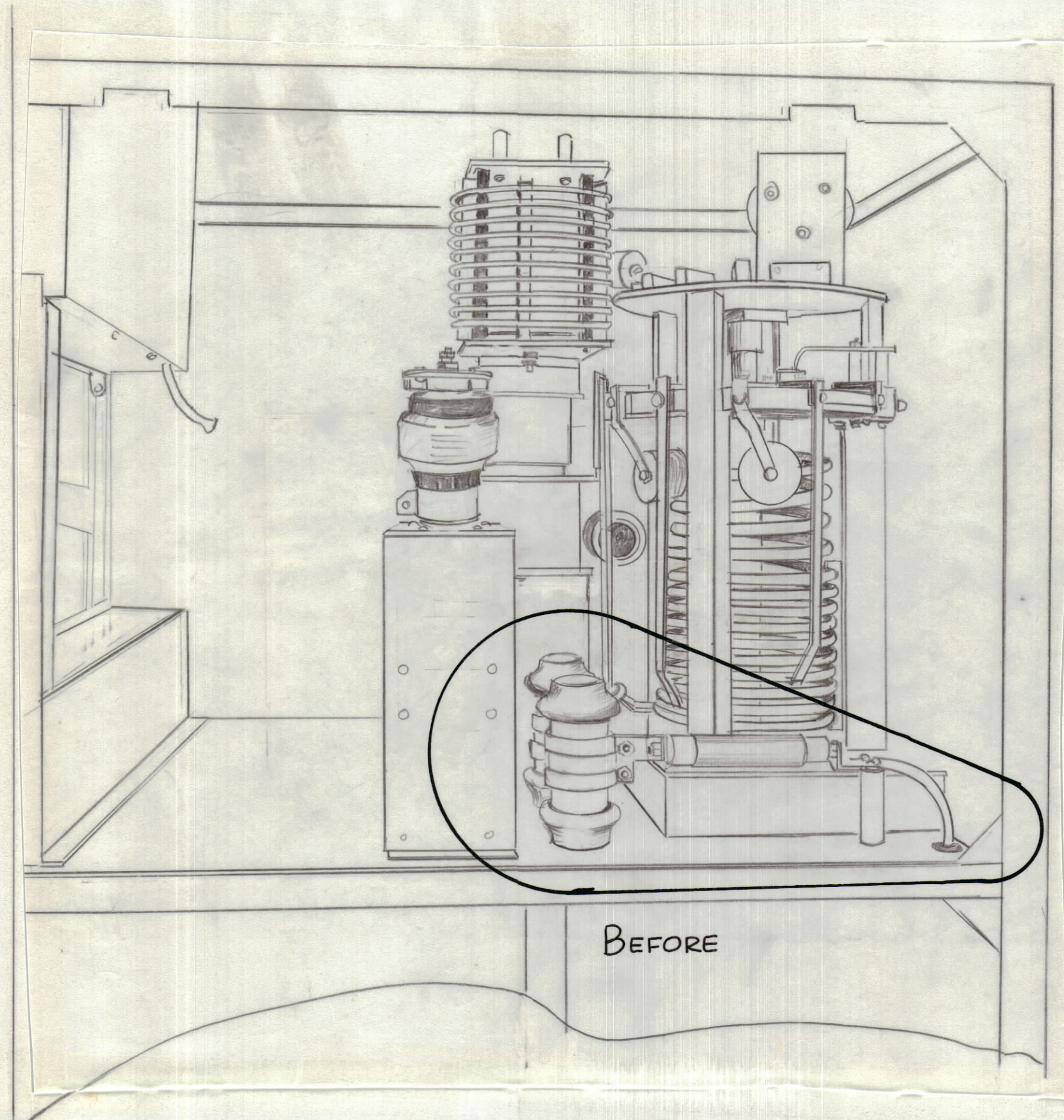
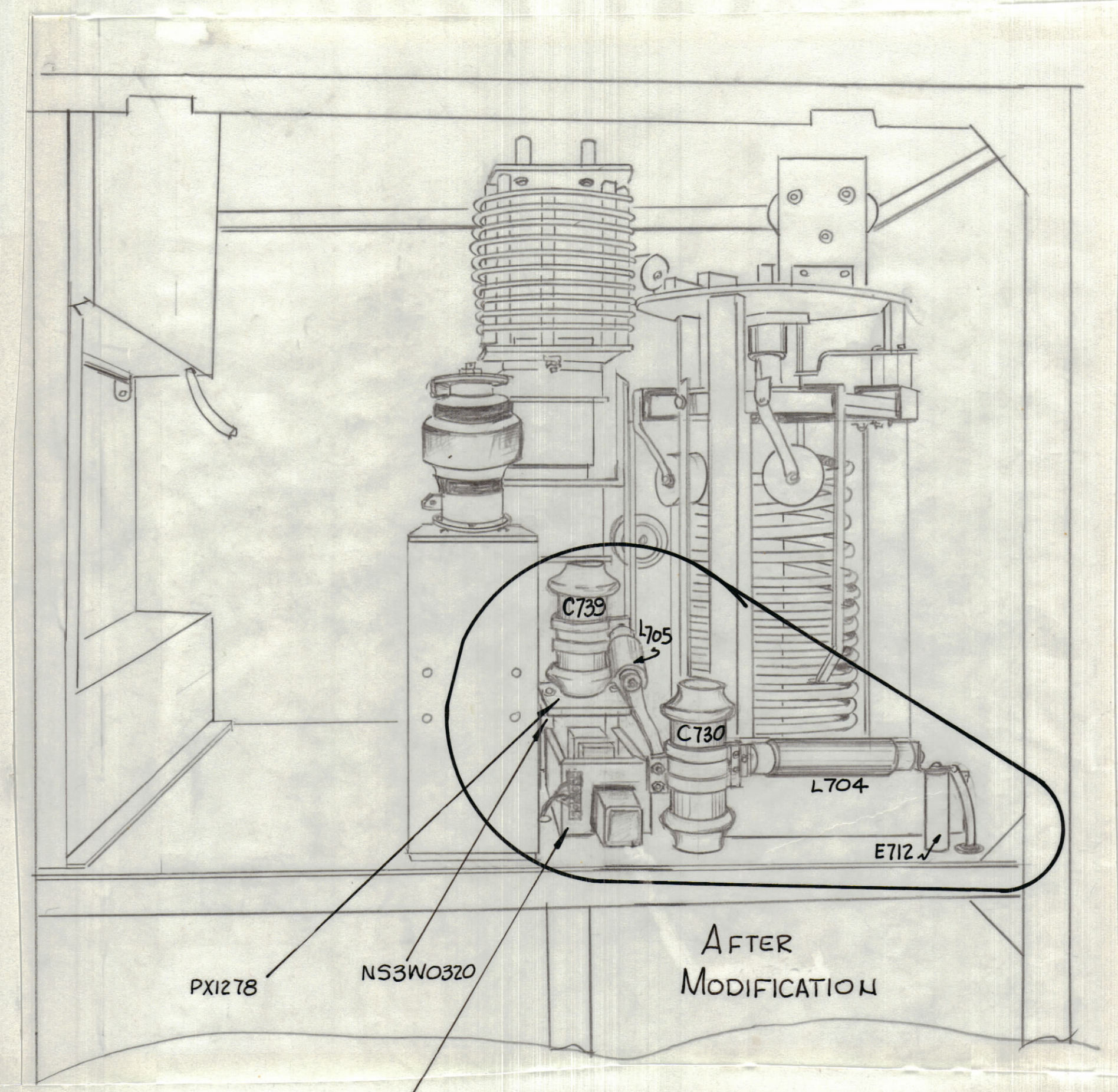


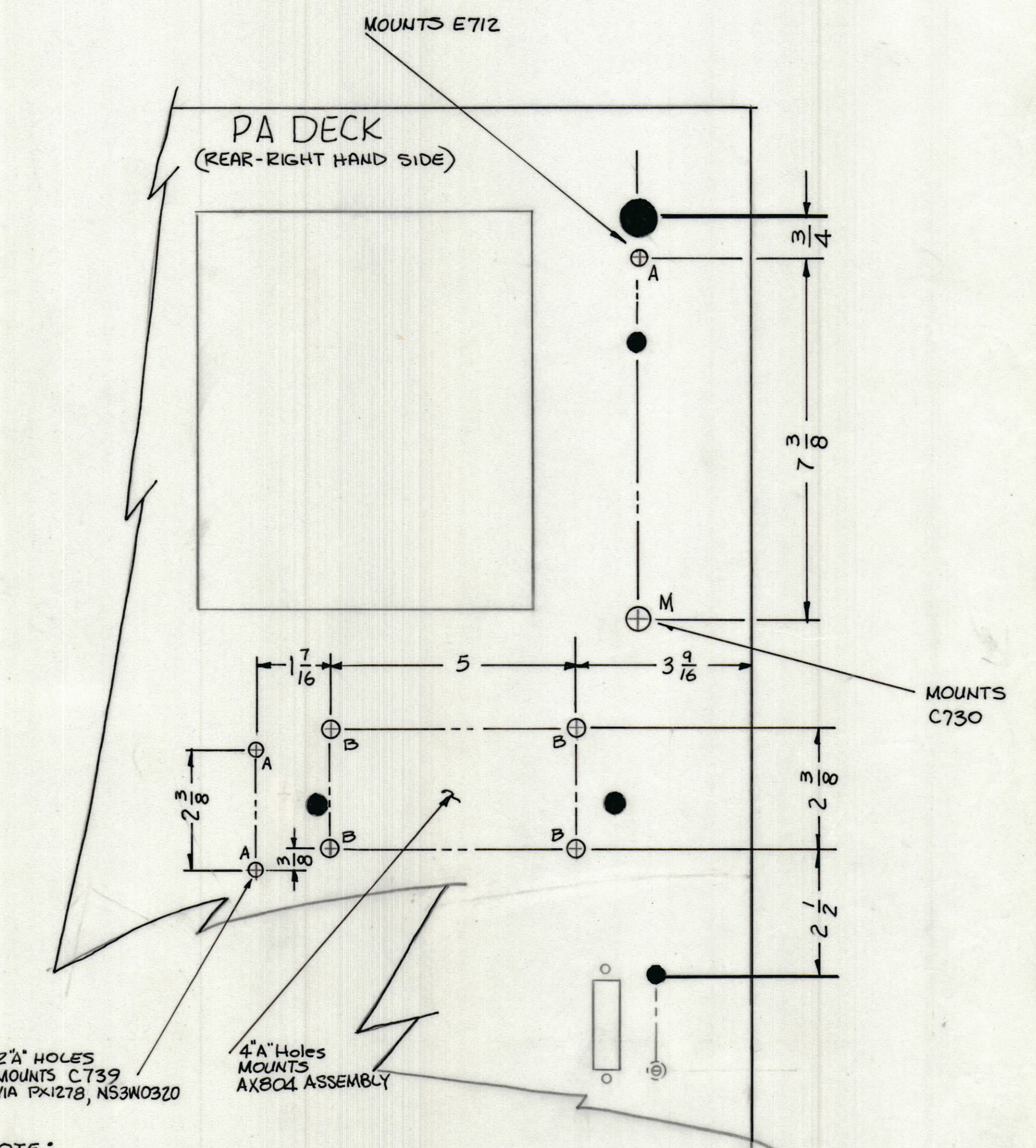
| REVISIONS |       |      |      |     | DATE             | APPROVED |
|-----------|-------|------|------|-----|------------------|----------|
| E.M.N.NO  | DRAFT | CHKD | ZONE | LTR | DESCRIPTION      |          |
| 200       |       |      |      |     | ORIGINAL RELEASE | 3-2-81   |



BEFORE



AFTER MODIFICATION



NOTE:  
 DARKENED HOLES EXIST ON THE PA DECK  
 THESE HOLES ARE SHOWN FOR REF ONLY.  
 3(A) HOLES, 4(B) HOLES, 1(C) HOLE MUST BE  
 MACHINED TO FACILITATE THE REQUIRED COMPONENTS  
 A - 15/64 DIA.  
 B - 13/64 DIA  
 C - 5/16 DIA

|   |               |          |
|---|---------------|----------|
| KIT 454   |               |          |
| QTY / UNIT  | MODEL USED ON | ASSY NO. |
| APPLICATION   |               |          |
| CODE  |               |          |
| <small>NOTICE TO PERSONS RECEIVING THIS DRAWING</small><br><small>THE TECHNICAL MATERIEL CORPORATION claims proprietary right in the material disclosed hereon. This drawing is issued in confidence for engineering information only and may not be reproduced or used to manufacture anything shown hereon without permission from THE TECHNICAL MATERIEL CORPORATION to the user. This drawing is loaned for mutual assistance and is subject to recall at any time.</small> |               |          |

| QTY. REQ.   | ITEM | PART NO.       | DESCRIPTION | SYMBOL  |
|---|------|----------------|-------------|---|
| LIST OF MATERIAL  |      |                |             |   |
| UNLESS OTHERWISE SPECIFIED DIMENSIONS ARE IN INCHES AND INCLUDE CHEMICALLY APPLIED OR PLATED FINISHES |      | FINAL APPROVAL | DATE        | <b>THE TECHNICAL MATERIEL CORP.</b><br>MAMARONECK, NEW YORK<br><br><b>INSTALLATION ASSEMBLY</b><br>8-12MHz DECOUPLING |
| TOLERANCES ON   |      | MECH. DES.     | DATE        |   |
| DECIMALS  |      | ELECT. DES.    | DATE        |   |
| FRACTIONS = 1/64  |      | CHECKED        | DATE        |   |
| ANGLES = 0° - 30°   |      | DRAWN          | DATE        |   |
| MATERIAL  |      | GDL            | 2-5-81      | SIZE CODE IDENT NO. DWG NO.   |
| FINISH  |      |                |             | D 82679 ID448   |
|   |      | SCALE          |             | SHEET OF  |