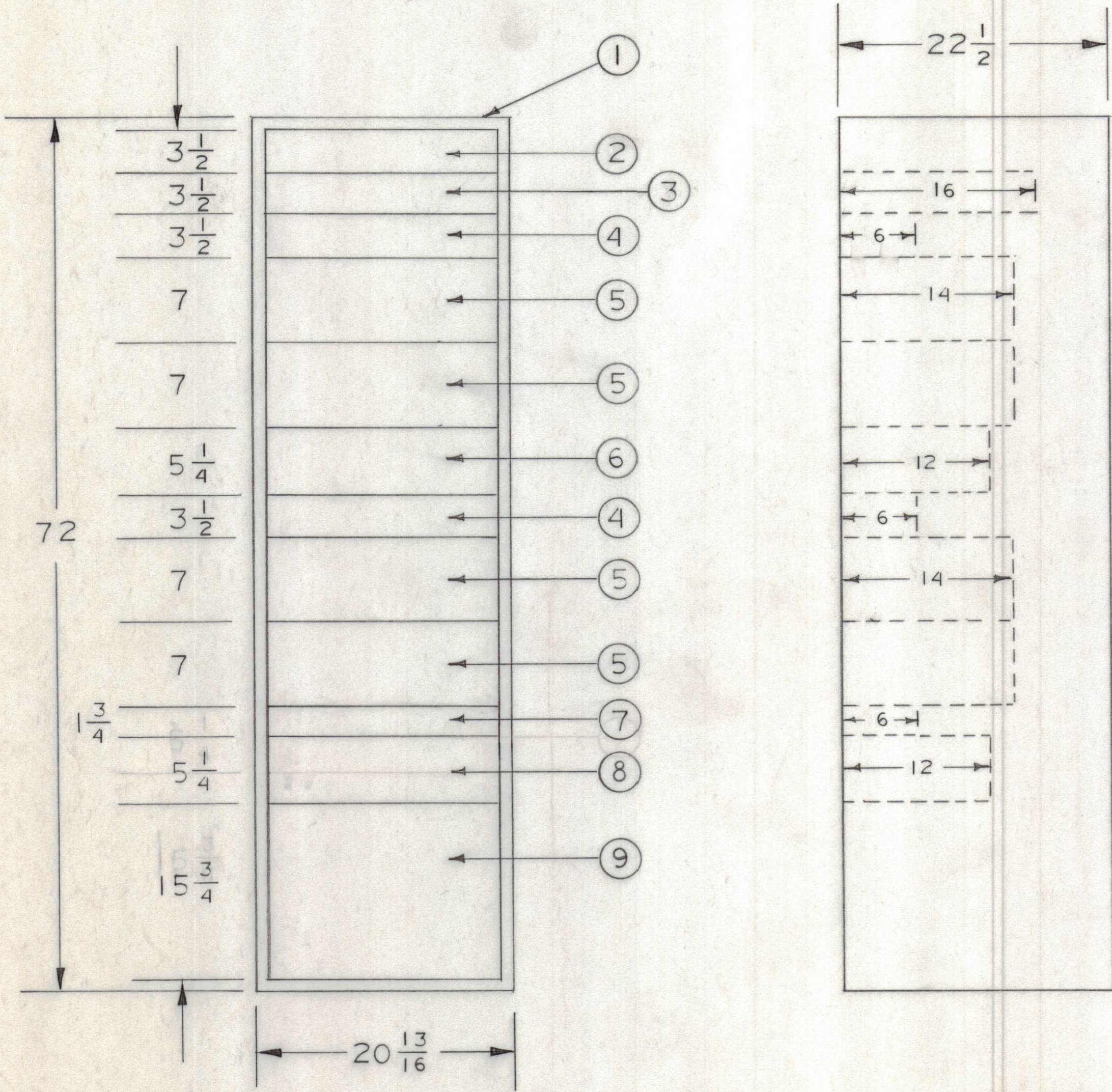


REVISIONS						
ZONE	LTR	DESCRIPTION	DATE	E.M.N.NO	DRAFT	CHKD APPD
ALL	A	REDRAWN & REVISED	4/15/69	RU	CDD	



NOTES:  
 1. INTERPRET IN ACCORDANCE WITH MIL-D-1000.  
 2. INPUT POWER: 115 VAC; 1 PHASE, 60 HZ.  
 3. POWER CONSUMPTION: 500 WATTS.  
 4. WEIGHT: 402 LBS, TOTAL FOR UNIT 7.

QTY REQ	NOMEN OR DESC	CODE IDENT	IDENT NO.	FIND NO.
1	PANEL, BLANK		MS8200-9	9
1	ATMC-1 REMOTE READBACK PNL		ATMCA-1	8
1	XMTR LEVEL CONTROL		ATPC-1	7
1	ACU-3 REMOTECONTROL PNL		ACUA-3	6
4	ATS-4 " " "		ATSA-4	5
2	INDICATOR, S. W. R.		SWRA-4	4
1	ATW-1 REMOTE READBACK PNL		ATWA-1	3
1	PANEL, BLANK		MS8200-2	2
1	CABINET, ELECTRICAL EQUIP		RAK151-7B	1

QTY. REQ.	ITEM	PART NO.	DESCRIPTION	SYMBOL
LIST OF MATERIAL				
FINAL APPROVAL		DATE		
MECH. DES.		DATE		
ELECT. DES.		DATE		
CHECKED		DATE		
DRAWN		DATE		
C. D. DEAN		4-16-69		
<b>THE TECHNICAL MATERIEL CORP.</b> MAMARONECK, NEW YORK  <b>SOURCE CONTROL DRAWING</b> P/O ASMA-1				
SIZE	CODE IDENT.NO.	DWG NO.	ISSUE	
C	82679	ID8015	A	
SCALE 1/8" = 1"			SHEET 1 OF 1	

1	7 B	
QTY / UNIT	MODEL USED ON	ASS'Y NO.
APPLICATION		
CODE		
NOTICE TO PERSONS RECEIVING THIS DRAWING THE TECHNICAL MATERIEL CORPORATION claims proprietary right in the material disclosed hereon. This drawing is issued in confidence for engineering information only and may not be reproduced or used to manufacture anything shown hereon without permission from THE TECHNICAL MATERIEL CORPORATION to the user. This drawing is loaned for mutual assistance and is subject to recall at any time.		

UNLESS OTHERWISE SPECIFIED DIMENSIONS ARE IN INCHES AND INCLUDE CHEMICALLY APPLIED OR PLATED FINISHES

TOLERANCES ON  
 DECIMALS .X ± .05  
 .XX ± .01  
 .XXX ± .005  
 FRACTIONS ± 1/64  
 ANGLES ± 0° -30'

MATERIAL

FINISH