

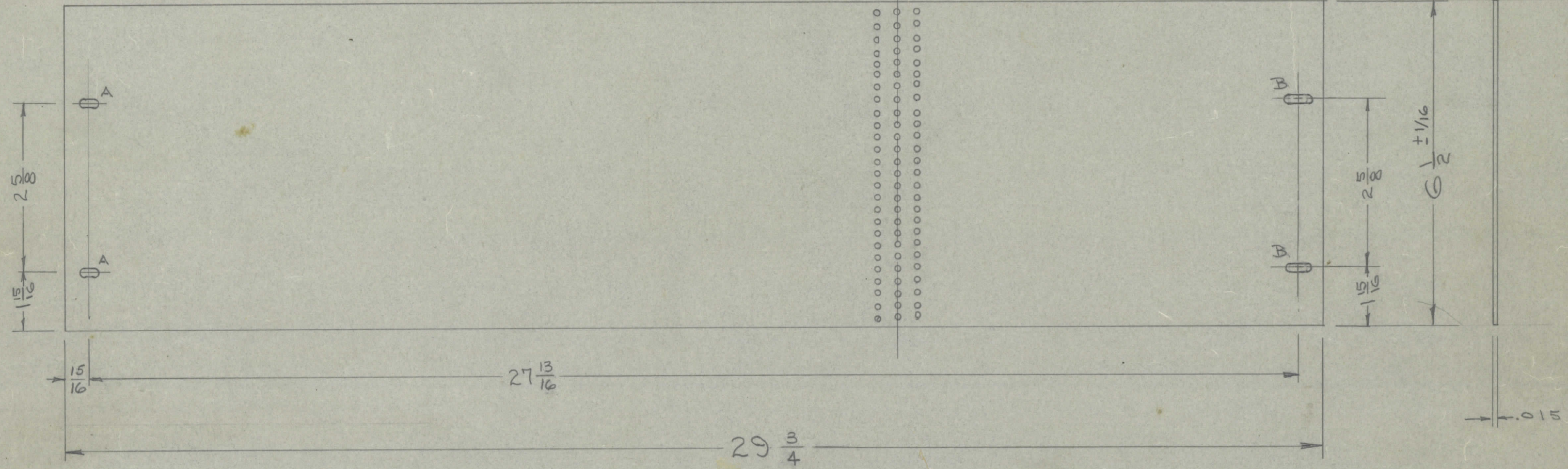
IF IT IS FOUND DESIRABLE TO CHANGE ANY TOLERANCE OR OTHER DETAIL SPECIFIED ON THIS DRAWING NOTIFY THE PURCHASER PROMPTLY.

MAXIMUM ALLOWABLE TOLERANCES HAVE BEEN DETERMINED AND DEVIATIONS WILL BE CAUSE FOR REJECTION. REMOVE ALL BURRS AND SHARP EDGES

IM-112 G

NOTE

SERIES OF HOLES TO BE PUNCHED ON ASSEMBLY.
 ☉ OF HOLES MUST COINCIDE WITH ☉ OF THEROMETER SLOT IN CASTING.



| | | | | | | | |
|------------|----------------|---|----------|---------|--------|---------|-----------|
| G | 1 | DIMS. CLARIFIED | 12-5-62 | 7778 | JCB | JCB | JCB |
| F | 1 | ±1/16 ADDED TO LENGTH WIDTH | 7-27-62 | 7254 | JCB | JCB | JCB |
| E | 1 | 3/16 X 1" SLOTS WERE 11/32 X 11/16 | 5/12/59 | 977 | J.C.B | JCB | JCB |
| D | 2 | B SLOTS ADDED | 10/11/57 | 4 | JCB | JCB | JCB |
| C | 1 | 27 1/2 WAS 27 1/4 | 3/23/55 | 3 | JCB | JCB | JCB |
| B | 2 | 29 WAS 29 3/4 | 9/23/54 | 2 | C.D.P. | JCB | JCB |
| A | 1 | REDRAWN - DIM. CHANGED | 7/2/54 | 1 | JCB | JCB | JCB |
| ISSUE | ITEM | CHANGED FROM | DATE | CN. NO. | DRAFTS | CHECKER | ENG. APP. |
| TOLERANCES | | SCALE: | | | | | |
| ALL OTHERS | DEC. DIM. ± | DRILL, PUNCH, COMMERCIAL STOCK SIZES AND MANUFACTURERS TOLERANCES ARE NOT INCLUDED. | | | | | |
| | FRAC. DIM. ± | | | | | | |
| | ANGULAR DIM. ± | | | | | | |

A = 1/64 X 1/2 SLOTS 2 REQ.
 B = 3/16 X 1" SLOTS 2 REQ.

| | | | | |
|---------|-------|-------------|------------|----------|
| 1 | CMO-2 | | | 3-10-60 |
| 1 | CMO-1 | | | 3-10-60 |
| 1 | RTF-2 | MAS/OBC | | 11-10-58 |
| 1 | RTF | | | 2-1-56 |
| 1 | VOX-2 | | 291 | 1-19-55 |
| 1 | VOX-1 | | | |
| 1 | PMO-2 | | 285 | 7-21-54 |
| 1 | PMO-1 | | 285 | 7-21-54 |
| 1 | VOX | | 101 | 7-21-54 |
| | MODEL | PROJECT NO. | ASS'Y. NO. | DATE |
| | | | A-636 | |
| USED ON | | | | |

| | | | | |
|------|------|----------|------------------------------|-----------------|
| REQ. | ITEM | PART NO. | DESCRIPTION | SYMBOL |
| | | .015 | THE TECHNICAL MATERIEL CORP. | |
| | | | MAMARONECK. NEW YORK | |
| | | | FISH PAPER | |
| | | | OVEN CASTING (OVEN ASSY.) | |
| | | | TYPE & TEMPER | |
| | | | DRAWN | ELEC. DES. APP. |
| | | | CHECKED | FINAL APPROVAL |
| | | | IM-112 | G |
| | | | FINISH & SPEC. NO. | |