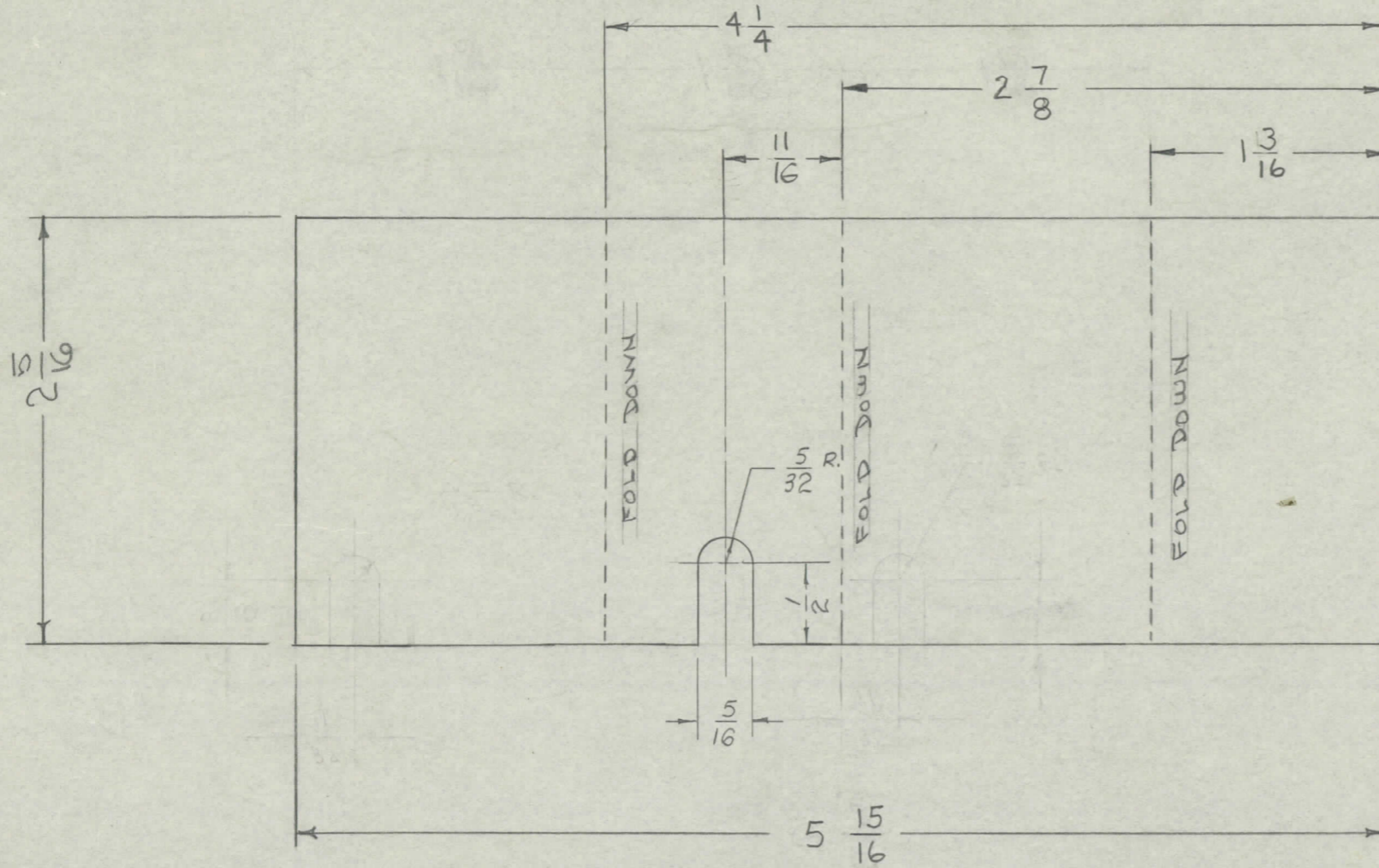


IF IT IS FOUND DESIRABLE TO CHANGE ANY TOLERANCE OR OTHER DETAIL SPECIFIED ON THIS DRAWING NOTIFY THE PURCHASER PROMPTLY.

MAXIMUM ALLOWABLE TOLERANCES HAVE BEEN DETERMINED AND DEVIATIONS WILL BE CAUSE FOR REJECTION. REMOVE ALL BURRS AND SHARP EDGES

IM-149 C



C	3	DIM: 1-3/4, 1-5/16, 1-3/4, 21/32, DELE	3, 23, 65	13717	RJ	OK	ST
	2	DIM: 1-3/16, 2-7/8, 4-1/4, 11/16 ADD;					
	1	DIM 5-15/16 WAS 6-1/8					
B	1	CUT OUT MOVED	12-22-50	2	1/3	HH	G.T.O.
A	1	COMPLETELY REVISED	9/16/55	1	ebd	HH	WJ
ISSUE	ITEM	CHANGED FROM	DATE	CN. NO.	DRAFTS	CHECKER	ENG. APP.

TOLERANCES		SCALE:
ALL OTHERS	DEC. DIM. ± FRAC. DIM. ± 1/32 ANGULAR DIM. ±	DRILL, PUNCH, COMMERCIAL STOCK SIZES AND MANUFACTURERS TOLERANCES ARE NOT INCLUDED.

1	GPR	297	A-924	1-28-55
REQ. PER UNIT	MODEL	PROJECT NO.	ASS'Y. NO.	DATE
USED ON				

REQ.	ITEM	PART NO.	DESCRIPTION	SYMBOL
		.015	THE TECHNICAL MATERIEL CORP., MAMARONECK, NEW YORK	
		FISH PAPER	INSULATION, DUST COVER	
			AUDIO SELECTIVE NETWORK	
			CDD. 1-28-55	HH
			DRAWN	ELEC. DES. APP. MECH. DES. APP.
			HEAT TREAT. SPEC.	G.T.O.
			CHECKED	FINAL APPROVAL
				IM-149 C
			FINISH & SPEC. NO.	