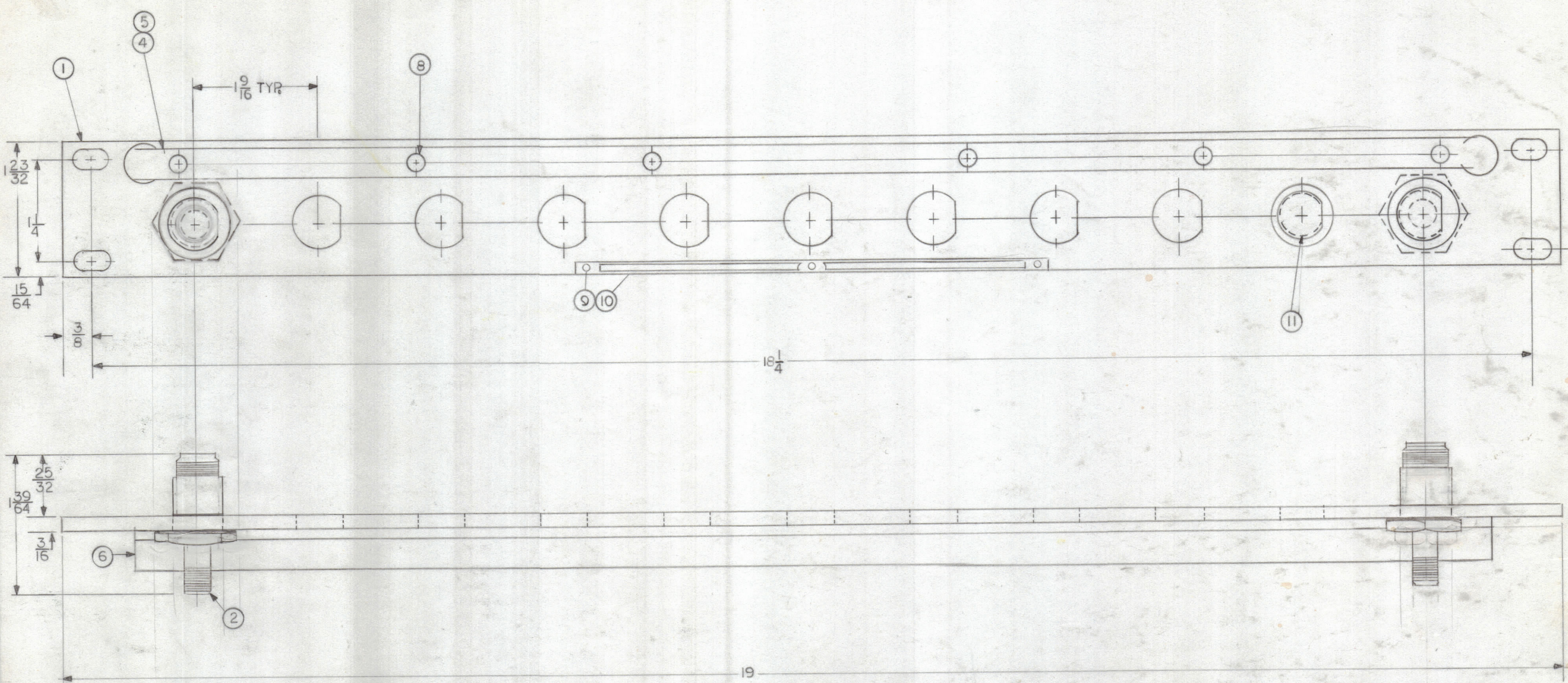


REVISIONS							
ZONE	LTR	DESCRIPTION	DATE	E.M.N.NO	DRAFT	CHKD	APPD



NOTE:
 1. CONNECTORS ARE MOUNTED FROM LEFT TO RIGHT
 2. WHEN CONNECTOR MOUNTING HOLES ARE NOT UTILIZED PLUG BUTTONS (ITEM 11) ARE TO BE MOUNTED ON FACE OF FRONT PANEL
 3. REFER TO CHART FOR APPLICATION OF PLUG BUTTONS

JPP 11A6X11	11	0
JPP 11A6X10	10	1
JPP 11A6X9	9	2
JPP 11A6X8	8	3
JPP 11A6X7	7	4
JPP 11A6X6	6	5
JPP 11A6X5	5	6
JPP 11A6X4	4	7
JPP 11A6X3	3	8
JPP 11A6X2	2	9
JPP 11A6X1	1	10
MODEL	ITEM 2	ITEM 11
	QUANTITY	

QTY. REQ.	ITEM	PART NO.	DESCRIPTION	SYMBOL
X	12	S-721	TEST PROCEDURE	
SEE CHART	11	HB-101-I-G	BUTTON, PLUG	
1	10	NP-414	NAMEPLATE IDENTIFICATION	
3	9	SFP0256SN3	SCREW, MACHINE	
6	8	SCFP0632BN5	SCREW, MACHINE	
—	7			
1	6	PM-486	BRACE, PANEL	
1	5	PX-396-17	GUARD, TAB	
1	4	PR-101-17	TAB, PAPER	
—	3			
SEE CHART	2	JJ 368	ADAPTOR, CONNECTOR	
1	1	MS2954-2	MACHINING, FRONT PANEL	

THE TECHNICAL MATERIEL CORP.
 MAMARONECK, NEW YORK

PATCH PANEL, JACK
 "N"-SMA

SIZE	CODE IDENT. NO.	DWG NO.	ISSUE
C	82679	JPP11A6X11	Ø

QTY / UNIT	MODEL USED ON	ASS'Y NO.
APPLICATION		
CODE		
MATERIAL		
FINISH		

UNLESS OTHERWISE SPECIFIED DIMENSIONS ARE IN INCHES AND INCLUDE CHEMICALLY APPLIED OR PLATED FINISHES

TOLERANCES ON
 DECIMALS .X ± .05
 .XX ± .01
 .XXX ± .005
 FRACTIONS ± 1/64
 ANGLES ± 0° -30'

FINAL APPROVAL: *QOB* DATE: 5/22/85
 MECH. DES.: DATE:
 ELECT. DES.: *E.F.M.* DATE: 5/22/85
 CHECKED: *RW* DATE: 5-18-85
 DRAWN: *A. Wilson* DATE: 5-18-85

NOTICE TO PERSONS RECEIVING THIS DRAWING
 THE TECHNICAL MATERIEL CORPORATION claims proprietary right in the material disclosed hereon. This drawing is issued in confidence for engineering information only and may not be reproduced or used to manufacture anything shown hereon without permission from THE TECHNICAL MATERIEL CORPORATION to the user. This drawing is loaned for mutual assistance and is subject to recall at any time.

SCALE DO NOT SCALE SHEET OF