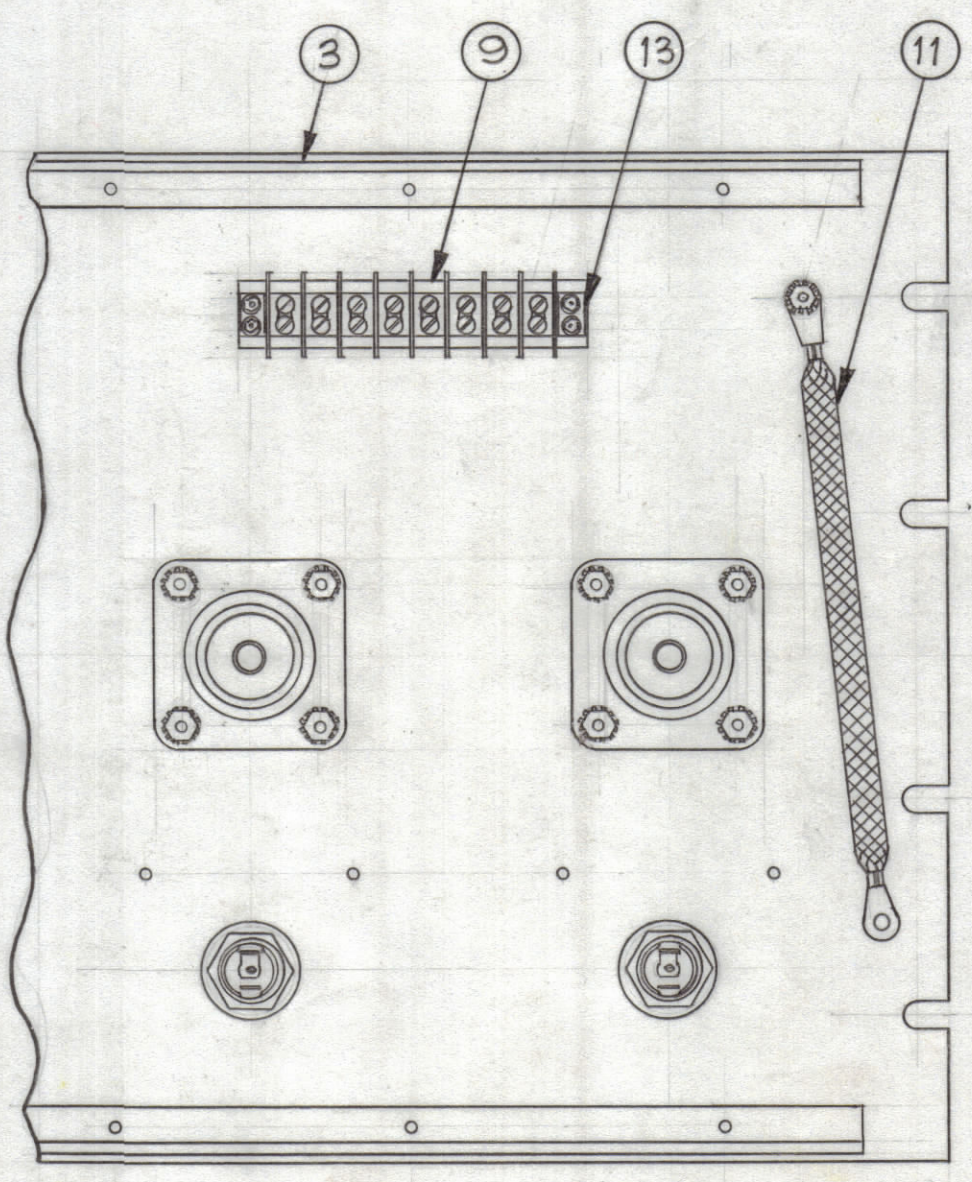
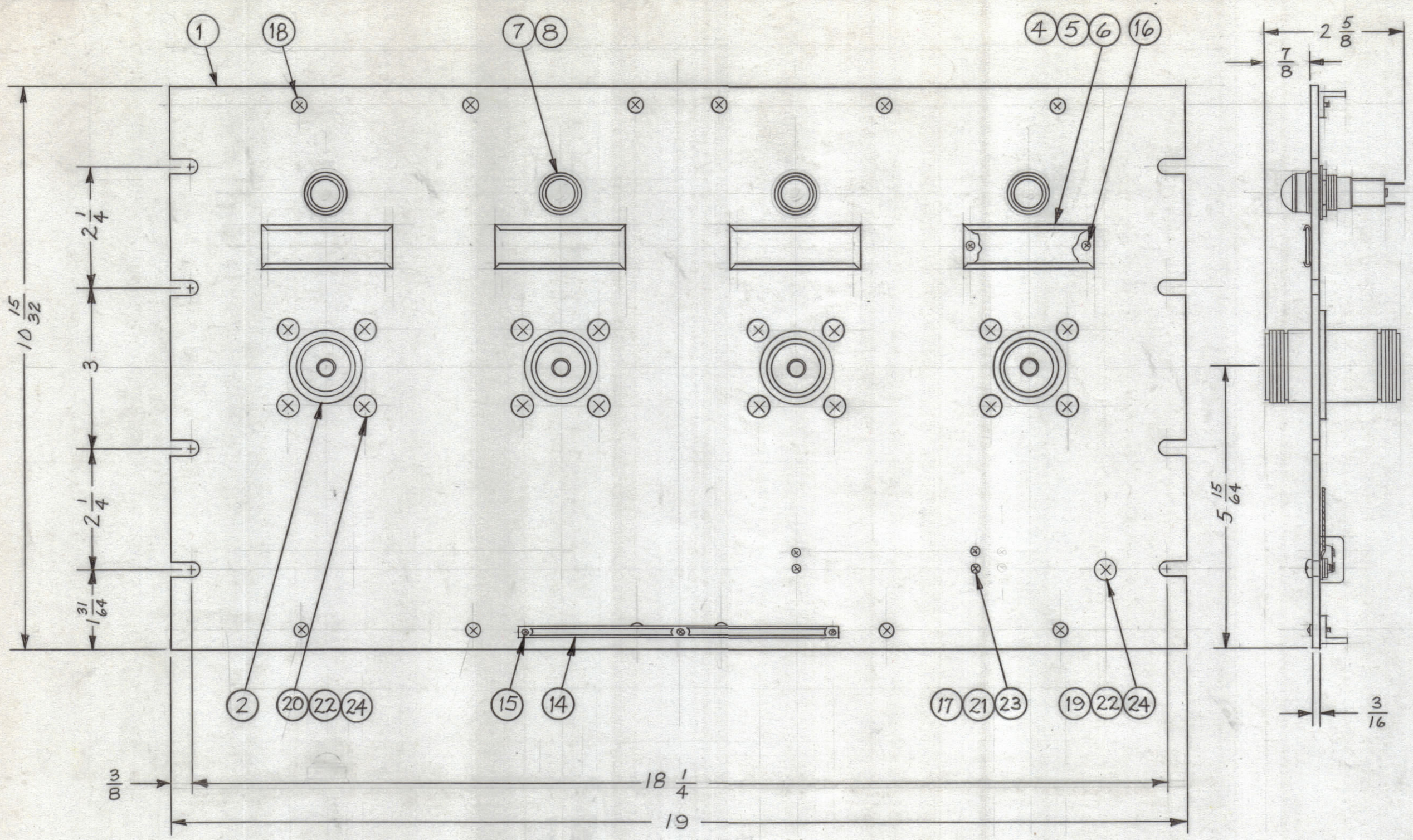


REVISIONS							
ZONE	SYM	DESCRIPTION	DATE	E.M.N. NO.	DRAFT	CHKD	APPD



REQ'D.	ITEM	PART NUMBER	DESCRIPTION	SYMBOL
17	24	NTH1032BN12	NUT, HEX	
4	23	NTH0440BN6	NUT, HEX	
17	22	LWE10MRN	WASHER, LOCK, EXTERNAL	
4	21	LWE04MRN	WASHER, LOCK, EXTERNAL	
16	20	SCFP1032BN9	SCREW, MACHINE	
1	19	SCFP1032BN8	SCREW, MACHINE	
12	18	SCFP0632BN5	SCREW, MACHINE	
4	17	SCFP0440BN10	SCREW, MACHINE	
8	16	SCFP0348BN4	SCREW, MACHINE	
3	15	SFB0256SN3	SCREW, THREAD CUTTING	
1	14	NP-414	NAMEPLATE, IDENTIFICATION	
2	13	MS-151-1	PLATE, SADDLE	
1	12	CA-836	CABLE ASS'Y, BRANCHED	
1	11	CA-409-69-6.00	CABLE ASS'Y, GROUND	
1	10	TM-105-B-AR	FANNING STRIP (LOOSE ITEM)	
1	9	TM-102-8	TERMINAL STRIP BARRIER TYPE	
4	8	BI-101-1820	LAMP INCANDESCENT BAYONET BASE	
4	7	TS-106-1	SOCKET, BAYONET BASE	
4	6	PX-623-1	GUARD, PLASTIC	
4	5	PR-103-1	TAB, PAPER	
4	4	MS-2669	HOLDER, CARD	
2	3	PM-490	BRACE, PANEL	
4	2	JJ-220	CONNECTOR, RECEPTACLE	
1	1	MS-3569	PANEL, FRONT (MACHINING)	

JPP-9F9X4A

MARTINENGO LIST OF MATERIAL			
MATERIAL ALUMINUM		THE TECHNICAL MATERIEL CORP. MAMARONECK, NEW YORK	
FINISH TMC SMOOTH GRAY SEMI-GLOSS ENAMEL		TITLE JACK PATCH PANEL "LC" TO "LC"	
UNLESS OTHERWISE SPECIFIED DIMENSIONS ARE IN INCHES AND INCLUDE CHEMICALLY APPLIED OR PLATED FINISHES	DRAWN M TANTILLO	DATE 10-22-63	FINAL APPROVAL <i>[Signature]</i>
DECIMALS .X ± .05 .XX ± .01 .XXX ± .005	TOLERANCES	ELECT. DES. <i>[Signature]</i>	DATE 10-24-63
FRACTIONS ± 1/64 ANGLES ± 0° 30'		MECH. DES. <i>[Signature]</i>	DATE 10-24-63
		SHEET	

NOTES

THE CONTENTS OF THIS DRAWING ARE THE EXCLUSIVE PROPERTY OF THE TECHNICAL MATERIEL CORP. ITS UNAUTHORIZED USE OR REPRODUCTION IN WHOLE OR IN PART IS STRICTLY FORBIDDEN.