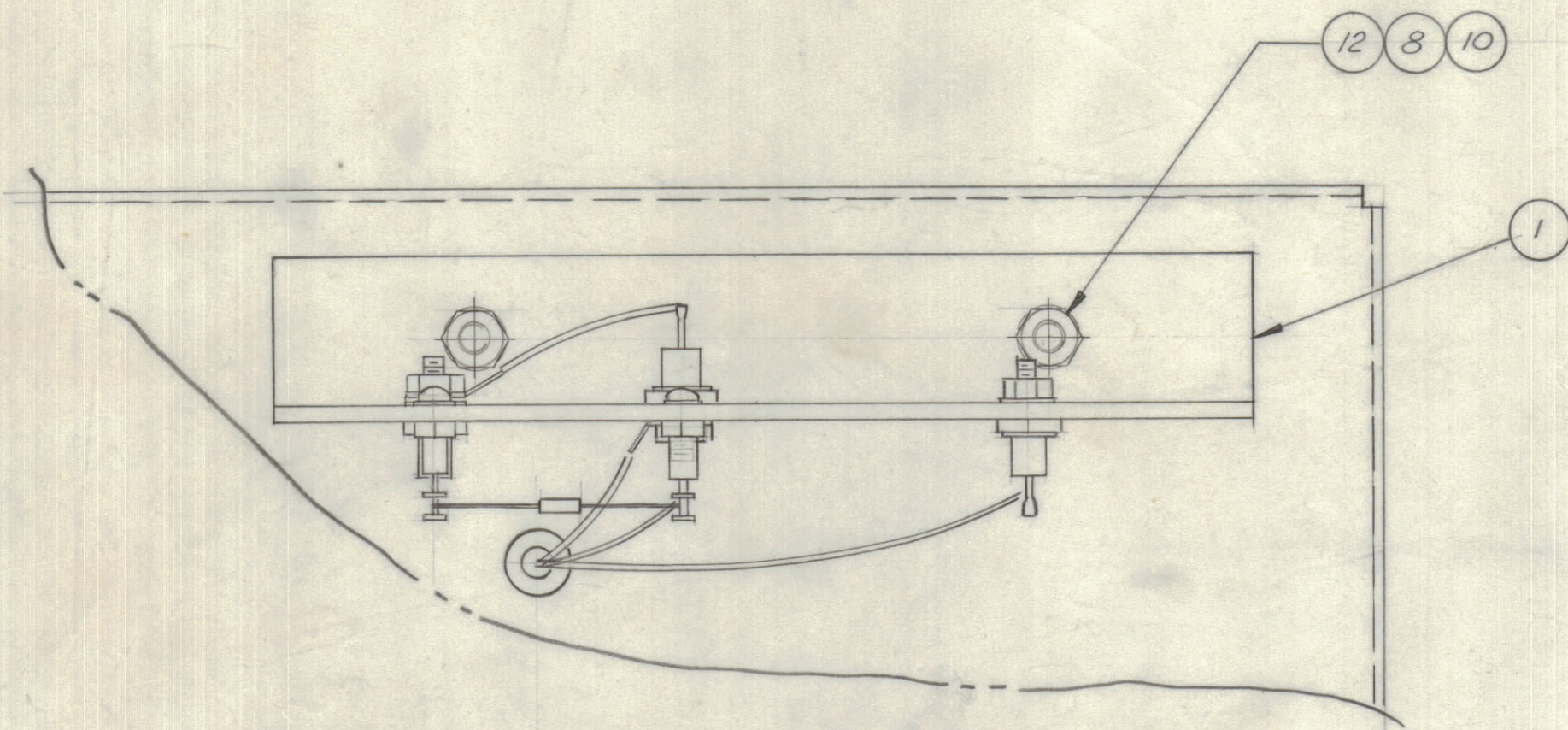
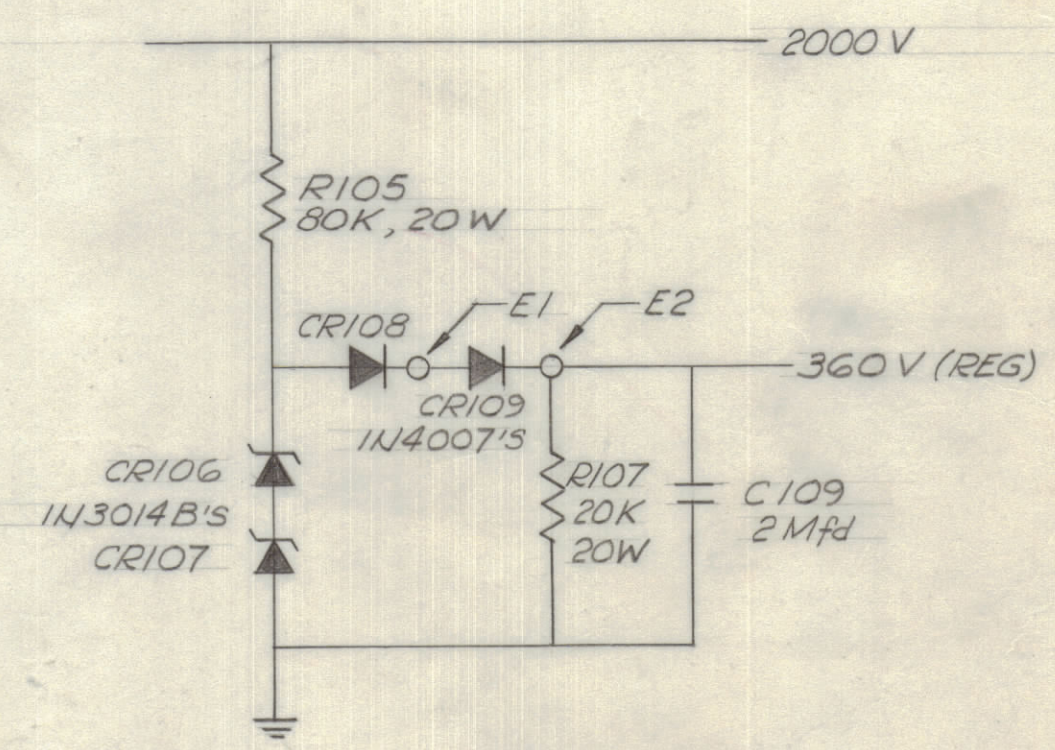
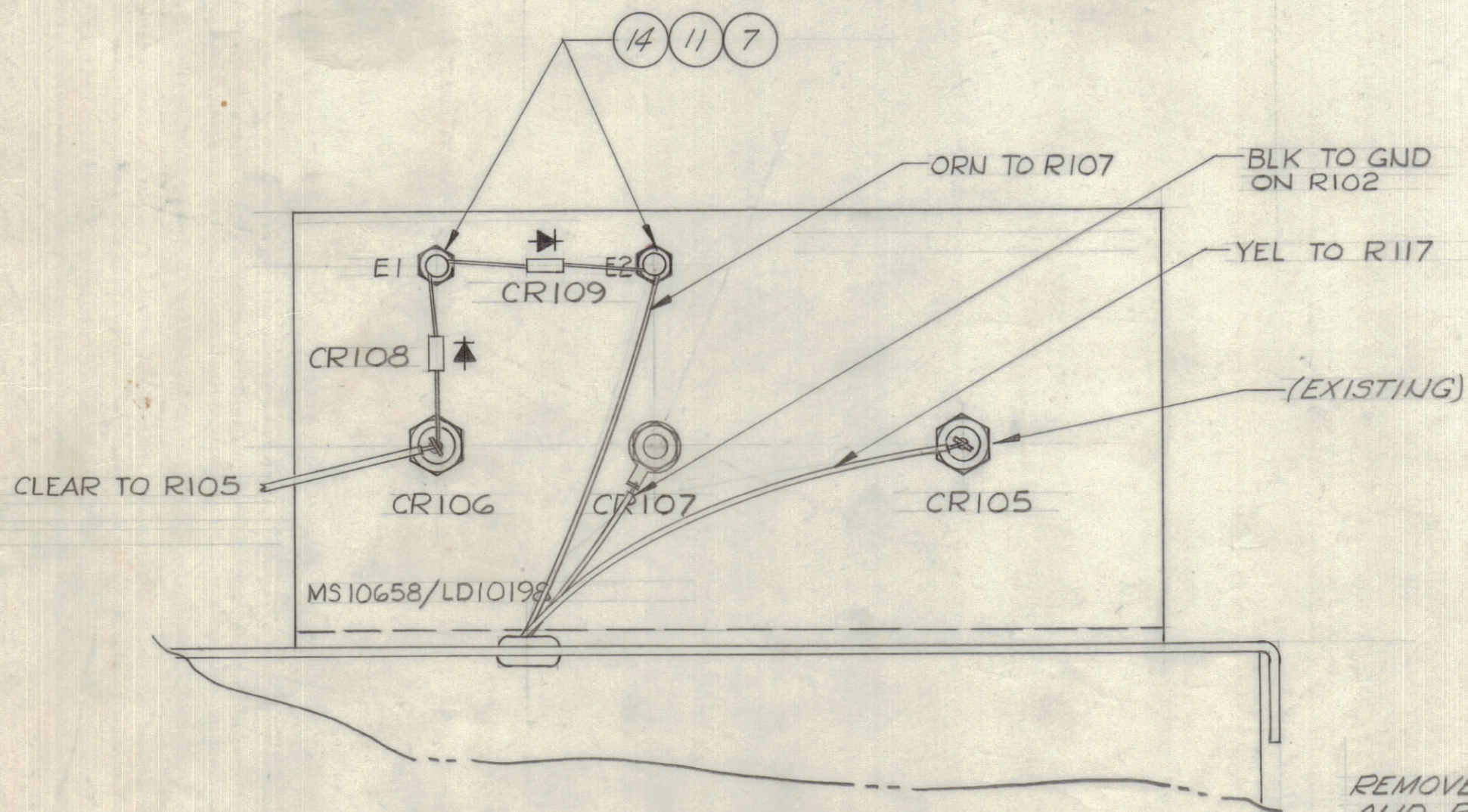


IF IT IS FOUND DESIRABLE TO CHANGE ANY TOLERANCE OR OTHER DETAIL SPECIFIED ON THIS DRAWING NOTIFY THE PURCHASER PROMPTLY.		DIMENSIONS IN INCHES UNLESS OTHERWISE SPECIFIED					
MAXIMUM ALLOWABLE TOLERANCES HAVE BEEN DETERMINED AND DEVIATIONS WILL BE CAUSE FOR REJECTION. REMOVE ALL BURRS AND SHARP EDGES.							
ISSUE	ITEM	CHANGED FROM	DATE	CN. NO.	DRAFTS	CHECKER	ENG. APP.
Ø		PROD. RELEASE	7 JUNE 73	1234	NAT	LB	[Signature]



REQ	ITEM	PART NO.	DESCRIPTION	USED ON	REMARKS
REF		MS10658	HEAT SINK	A10721	
REF	1	MS10658/LD10198	HEAT SINK, LETT.	MS10658	
	2				
REF	3	1N3014 B	DIODE ZENER	A10721	CR106, 107
REF	4	1N4007	DIODE	A10721	CR108, 109
	5				
	6				
REF	7	LWI04MSS	WASHER, LOCK, INT. TOOTH	A10721	
2	8	LWI10MSS	WASHER, LOCK, INT. TOOTH	KIT 10046	
	9				
2	10	1N1024SS12	NUT HEX	KIT 10046	
REF	11	SCBP0440SS5	SCREW MACH	A10721	
2	12	SCBP1024SS6	SCREW MACH	KIT 10046	
	13				
REF	14	TE 102-2	TERMINAL INSLUL	A10721	E1, 2
	15				
1	16	A10721	SCREEN REG. ASSY	KIT 10046	

KIT 10046 Ø



REMOVE BRACKET ASSY, TUBE MTG PIN 'A10721', AND REPLACE WITH ITEM 1. RETAIN & REUSE EXISTING DIODE, CR105.

NOTE:

TOLERANCES		SCALE:	
ALL	DEC. DIM. ± .05	DRILL, PUNCH, COMMERCIAL STOCK	
OTHERS	FRAC. DIM. ± 1/64	SIZES AND MANUFACTURERS	
	ANGULAR DIM. ± 0° 30'	TOLERANCES ARE NOT INCLUDED.	

PSP 500	142/72	A10401	29 MAR 72
MODEL	PROJECT NO.	ASSY. NO.	DATE

STOCK SIZE		TMC (Canada) LIMITED	
		OTTAWA ONTARIO	
MATERIAL		MOD KIT SOLID STATE	
WEIGHT PER PC.		SCREEN REGULATOR	
TYPE & TEMPER		THOMAS	[Signature]
DRAWN		ELEC. DES. APP.	MECH. DES. APP.
HEAT TREAT. SPEC.		L. BROWN	
FINISH & SPEC. NO.		CHECKED	FINAL APPROVAL
		KIT 10046 Ø	