

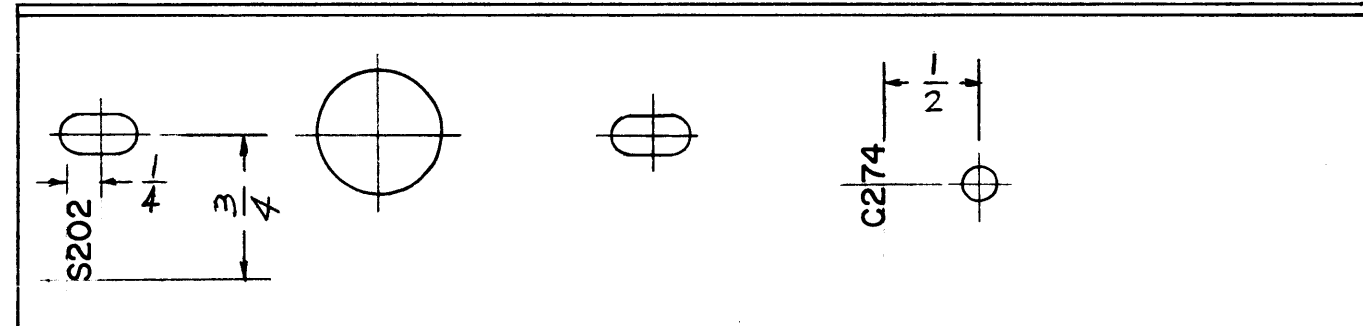
LD-1015

THE CONTENTS OF THIS DRAWING ARE THE EXCLUSIVE PROPERTY OF THE TECHNICAL MATERIEL CORP. ITS UNAUTHORIZED USE OR REPRODUCTION IN WHOLE OR IN PART IS STRICTLY FORBIDDEN.

NOTICE TO PERSONS RECEIVING THIS DRAWING

THE TECHNICAL MATERIEL CORPORATION claims proprietary right in the material disclosed hereon. This drawing is issued in confidence for engineering information only and may not be reproduced or used to manufacture anything shown hereon without permission from THE TECHNICAL MATERIEL CORPORATION to the user. This drawing is loaned for mutual assistance and is subject to recall at any time.

Property of:  
THE TECHNICAL MATERIEL CORPORATION  
MAMARONECK, NEW YORK



MARKING PROCESS; AS PER TMC SPEC S-727  
LETTERING TO BE  $\frac{1}{8}$  HIGH GOTHIC, BLACK.

REF. MS-1438 (2)

REQ.	ITEM	PART NO.	DESCRIPTION	SYMBOL
			THE TECHNICAL MATERIEL CORP. MAMARONECK, NEW YORK	
STOCK SIZE			LETTERING, BRACKET, FRONT,	
MATERIAL			SWITCH	
			ab	gld
			DRAWN	CHECKED
			RK	LD-1015
			ELEC. DES. APP.	MECH. DES. APP.

SYM	DESCRIPTION	DATE	CH. NO.	DRAFTS	CHECKER	ENG. APP.
	UNLESS OTHERWISE SPECIFIED:					
	DIMENSIONS ARE IN INCHES					
	TOLERANCES ON					
	FRACTIONS $\pm 1/64$					
	DECIMALS $\pm .005$					
	ANGLES $\pm 1/2^\circ$					

REQ. PER UNIT	MODEL	SECTION	ASS'Y. NO.	DATE
1	RFC-1			11-30-61
1	RFD-1			11-30-61
1	REB-1			11-30-61