

IF IT IS FOUND DESIRABLE TO CHANGE ANY TOLERANCE OR OTHER DETAIL SPECIFIED ON THIS DRAWING NOTIFY THE PURCHASER PROMPTLY.

LD10100A

MAXIMUM ALLOWABLE TOLERANCES HAVE BEEN DETERMINED AND DEVIATIONS WILL BE CAUSE FOR REJECTION. REMOVE ALL BURRS AND SHARP EDGES

USED ON

MODEL

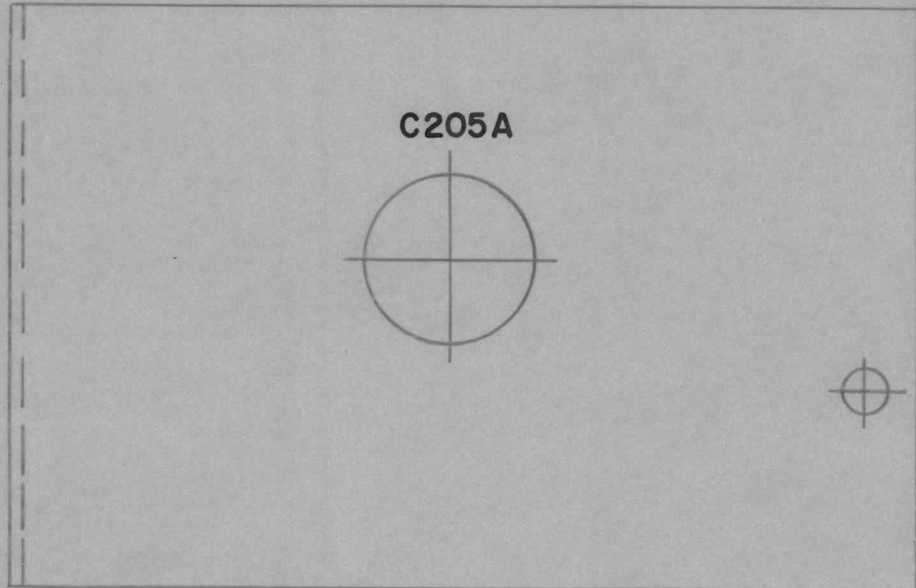
PROJECT NO.

ASS'Y. NO.

DATE

RFA-1

29/11/60



NOTE: STAMPING TO BE BLACK & 1/8 HIGH.

REF: MS10416.

REQ.	ITEM	PART NO.	DESCRIPTION	SYMBOL
			TMC (Canada) LIMITED OTTAWA ONTARIO	
		STOCK SIZE	STAMPING, CAPACITOR	
		MATERIAL	SHIELD	
		WEIGHT PER PC.		
		TYPE & TEMPER	JPC	KA
		HEAT TREAT. SPEC.	DRAWN	ELEC. DES. APP. MECH. DES. APP.
		FINISH & SPEC. NO.	CHECKED	FINAL APPROVAL

A	LD10100AWAS LD42B	NOV 29/60	JPC	KA	KA		
ISSUE	ITEM	CHANGED FROM	DATE	CN. NO.	DRAFTS	CHECKER	ENG. APP.
TOLERANCES		SCALE					
ALL OTHERS		DIMENSIONS IN INCHES UNLESS OTHERWISE SPECIFIED					
		DRILL, PUNCH, COMMERCIAL STOCK SIZES AND MANUFACTURERS TOLERANCES ARE NOT INCLUDED.					

LD10100 A

IF IT IS FOUND DESIRABLE TO CHANGE ANY TOLERANCE OR OTHER DETAIL SPECIFIED ON THIS DRAWING NOTIFY THE PURCHASER PROMPTLY.

LD10101 A

MAXIMUM ALLOWABLE TOLERANCES HAVE BEEN DETERMINED AND DEVIATIONS WILL BE CAUSE FOR REJECTION. REMOVE ALL BURRS AND SHARP EDGES

USED ON

MODEL

PROJECT NO.

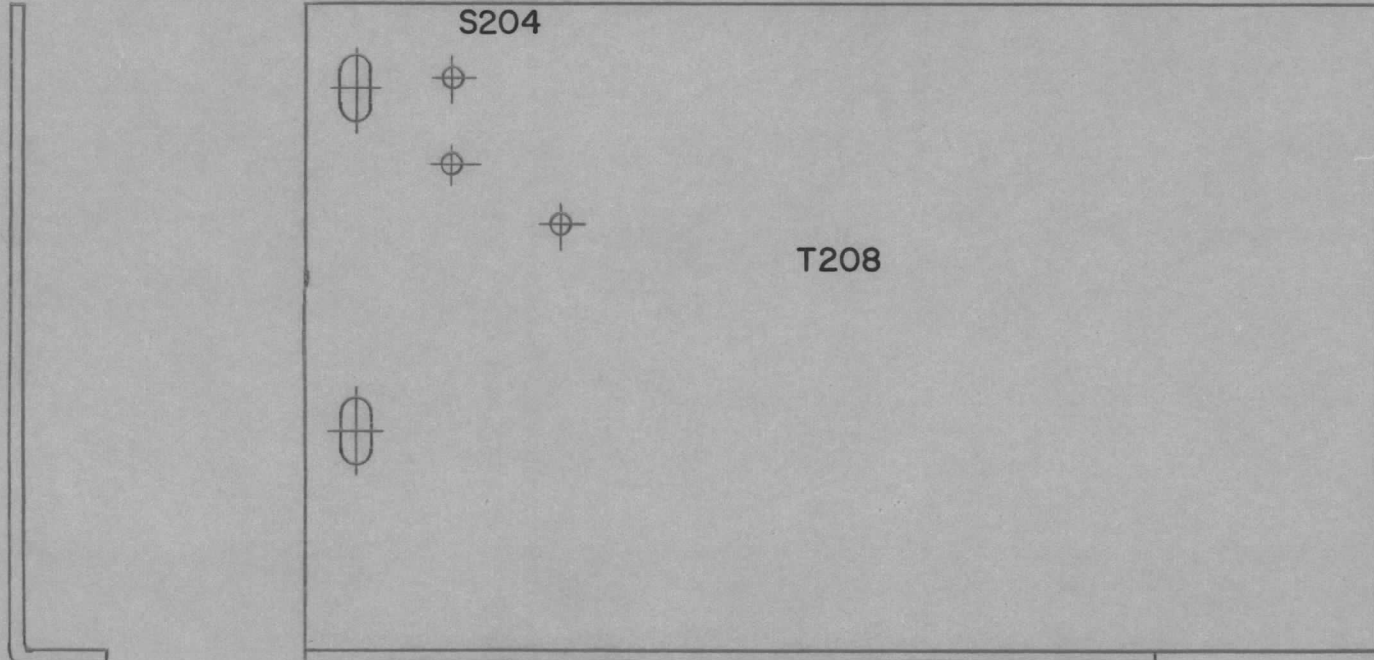
ASS'Y. NO.

DATE

RFA-1

29/11/60

TOP OF UNIT
↑



NOTE: STAMPING TO BE BLACK & 1/8 HIGH.

REF: MS10417

REQ.	ITEM	PART NO.	DESCRIPTION	SYMBOL
			TMC (Canada) LIMITED OTTAWA ONTARIO	
		STOCK SIZE	STAMPING, FIL, XFMR	
		MATERIAL	SHIELD. PAL-350.	
		WEIGHT PER PC.	JPC	KH
		TYPE & TEMPER	DRAWN	ELEC. DES. APP. MECH. DES. APP.
		HEAT TREAT. SPEC.	CHECKED	FINAL APPROVAL
		FINISH & SPEC. NO.	LD10101	A

A		LD10101 WAS LD429	NOV 29/60		JPC	GH	KH
ISSUE	ITEM	CHANGED FROM	DATE	CN. NO.	DRAFTS	CHECKER	ENG. APP.
TOLERANCES			SCALE				
ALL OTHERS			DIMENSIONS IN INCHES UNLESS OTHERWISE SPECIFIED				
DEC. DIM. ±			DRILL, PUNCH, COMMERCIAL STOCK SIZES AND MANUFACTURERS TOLERANCES ARE NOT INCLUDED.				
FRAC. DIM. ±							
ANGULAR DIM. ±							

IF IT IS FOUND DESIRABLE TO CHANGE ANY TOLERANCE OR OTHER DETAIL SPECIFIED ON THIS DRAWING NOTIFY THE PURCHASER PROMPTLY.

LD10103 A

MAXIMUM ALLOWABLE TOLERANCES HAVE BEEN DETERMINED AND DEVIATIONS WILL BE CAUSE FOR REJECTION. REMOVE ALL BURRS AND SHARP EDGES

USED ON

MODEL

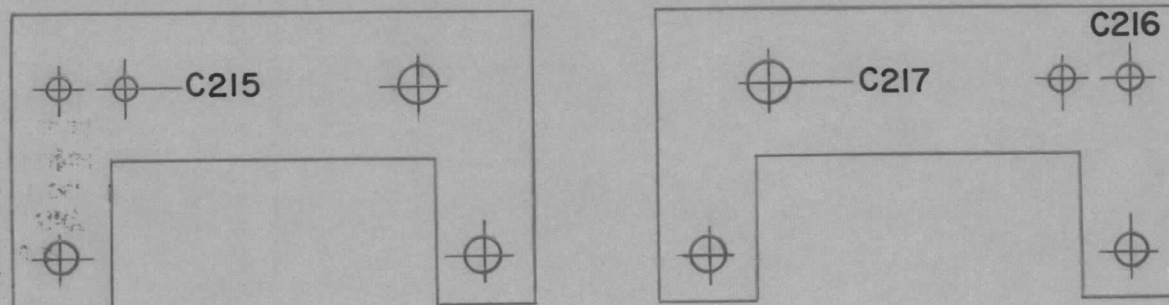
PROJECT NO.

ASS'Y. NO.

DATE

RFA-1

29/11/60



NOTE: STAMPING TO BE BLACK & 1/8 HIGH.

REF: MS10424

REQ.	ITEM	PART NO.	DESCRIPTION	SYMBOL
			TMC (Canada) LIMITED OTTAWA ONTARIO	
		STOCK SIZE	STAMPING, CAPACITOR	
		MATERIAL	MTG. PLATE. PAL-350.	
		WEIGHT PER PC.	JPC	KH
		TYPE & TEMPER	DRAWN	ELEC. DES. APP.
			CHECKED	MECH. DES. APP.
		HEAT TREAT. SPEC.	FINAL APPROVAL	
		FINISH & SPEC. NO.	LD10103	A

A	LD10103 WAS LD431	NOV 29/60	JPC	GHK	KH		
ISSUE	ITEM	CHANGED FROM	DATE	CN. NO.	DRAFTS	CHECKER	ENG. APP.
TOLERANCES		SCALE					
ALL OTHERS	DEC. DIM. ±		DIMENSIONS IN INCHES UNLESS OTHERWISE SPECIFIED				
	FRAC. DIM. ±		DRILL, PUNCH, COMMERCIAL STOCK SIZES AND MANUFACTURERS TOLERANCES ARE NOT INCLUDED.				
	ANGULAR DIM. ±						

IF IT IS FOUND DESIRABLE TO CHANGE ANY TOLERANCE OR OTHER DETAIL SPECIFIED ON THIS DRAWING NOTIFY THE PURCHASER PROMPTLY.

LD10106

MAXIMUM ALLOWABLE TOLERANCES HAVE BEEN DETERMINED AND DEVIATIONS WILL BE CAUSE FOR REJECTION. REMOVE ALL BURRS AND SHARP EDGES

USED ON

MODEL

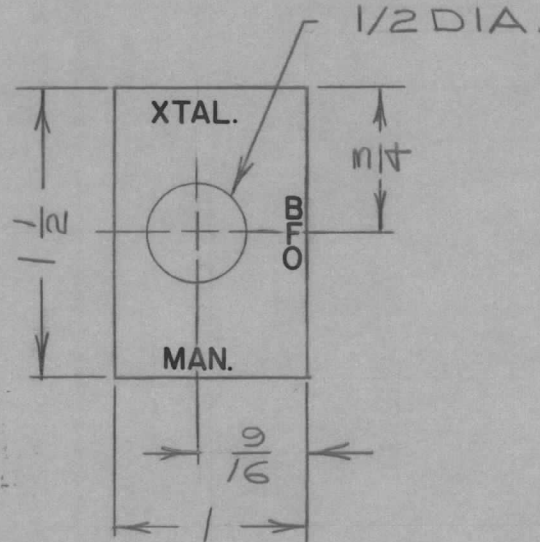
PROJECT NO.

ASS'Y. NO.

DATE

GPR 90RX BFO/XTAL
MOD CAN 1-B

MAR 21/60



NOTICE TO PERSONS RECEIVING THIS DRAWING

THE TECHNICAL MATERIEL CORPORATION claims proprietary right in the material disclosed hereon. This drawing is issued in confidence for engineering information only and may not be reproduced or used to manufacture anything shown hereon without permission from THE TECHNICAL MATERIEL CORPORATION to the user. This drawing is loaned for mutual assistance and is subject to recall at any time.

Property of:

THE TECHNICAL MATERIEL CORPORATION
MAMARONECK, NEW YORK

REQ.	ITEM	PART NO.	DESCRIPTION	SYMBOL
		.064 TK.	TMC (Canada) LIMITED OTTAWA ONTARIO	
		STOCK SIZE		
		ALUM	ESCUTCHEON PLATE	
		MATERIAL		
		WEIGHT PER PC.		
		TYPE & TEMPER	JPC	R.W. Thomas
			DRAWN	ELEC. DES. APP. MECH. DES. APP.
		HEAT TREAT. SPEC.		APC
			CHECKED	FINAL APPROVAL
		TMC GREY ENGRAVED		LD10106
		FINISH & SPEC. NO.		

ISSUE	ITEM	CHANGED FROM	DATE	CN. NO.	DRAFTS	CHECKER	ENG. APP.
TOLERANCES			SCALE 1:1				
ALL OTHERS	DEC. DIM. ± _____		DIMENSIONS IN INCHES UNLESS OTHERWISE SPECIFIED				
	FRAC. DIM. ± _____		DRILL, PUNCH, COMMERCIAL STOCK SIZES AND MANUFACTURERS TOLERANCES ARE NOT INCLUDED.				
	ANGULAR DIM. ± _____						

IF IT IS FOUND DESIRABLE TO CHANGE ANY TOLERANCE OR OTHER DETAIL SPECIFIED ON THIS DRAWING NOTIFY THE PURCHASER PROMPTLY.

LD10108

MAXIMUM ALLOWABLE TOLERANCES HAVE BEEN DETERMINED AND DEVIATIONS WILL BE CAUSE FOR REJECTION. REMOVE ALL BURRS AND SHARP EDGES

USED ON

MODEL

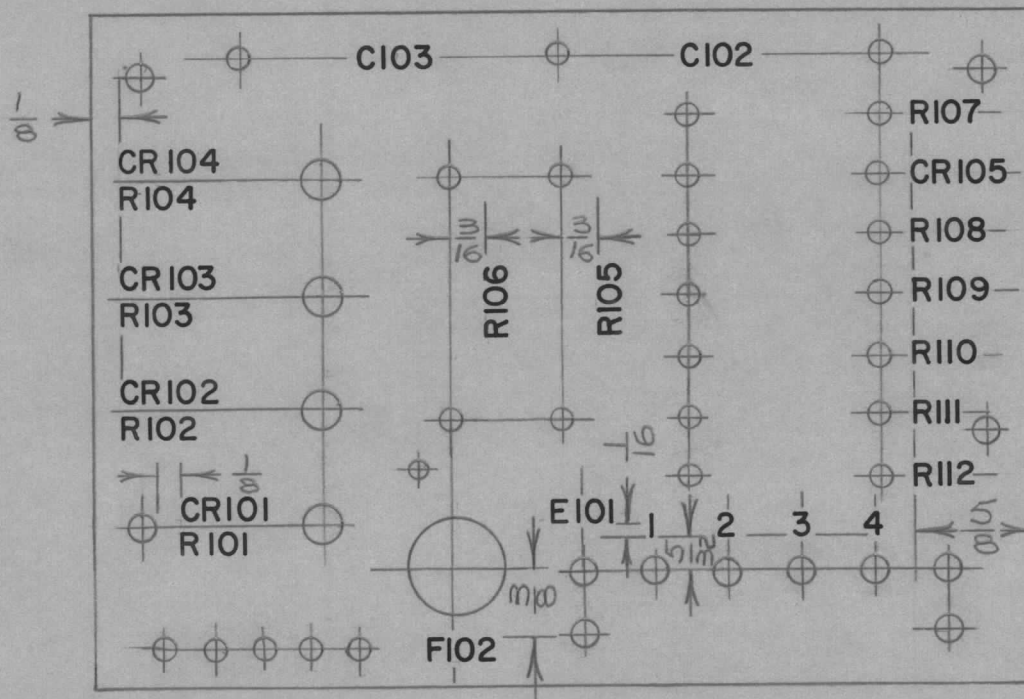
PROJECT NO.

ASS'Y. NO.

DATE

BAA-1 CE8503

MAY.26/60



NOTE: STAMPING TO BE BLACK & 1/8 HIGH.

REQ.	ITEM	PART NO.	DESCRIPTION	SYMBOL
		<p align="center">TMC(Canada)LIMITED OTTAWA ONTARIO</p>		
		STOCK SIZE	STAMPING -TERMINAL	
		MATERIAL WEIGHT PER PC.	BOARD - BAA-1	
		TYPE & TEMPER	JPC	
			DRAWN	ELEC. DES. APP. MECH. DES. APP.
		HEAT TREAT. SPEC.	CHECKED	FINAL APPROVAL
		FINISH & SPEC. NO.		LD10108

ISSUE	ITEM	CHANGED FROM	DATE	CN. NO.	DRAFTS	CHECKER	ENG. APP.
		TOLERANCES		SCALE 1:1			
		DEC. DIM. ± FRAC. DIM. ± ANGULAR DIM. ±		DIMENSIONS IN INCHES UNLESS OTHERWISE SPECIFIED DRILL, PUNCH, COMMERCIAL STOCK SIZES AND MANUFACTURERS TOLERANCES ARE NOT INCLUDED.			

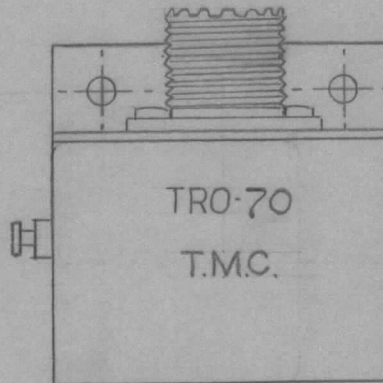
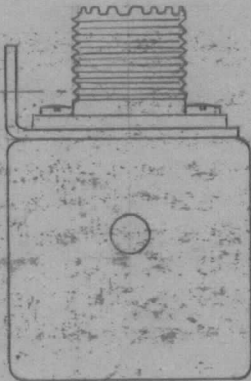
IF IT IS FOUND DESIRABLE TO CHANGE ANY TOLERANCE OR OTHER DETAIL SPECIFIED ON THIS DRAWING NOTIFY THE PURCHASER PROMPTLY.

LD-10110

MAXIMUM ALLOWABLE TOLERANCES HAVE BEEN DETERMINED AND DEVIATIONS WILL BE CAUSE FOR REJECTION. REMOVE ALL BURRS AND SHARP EDGES

USED ON

MODEL	PROJECT NO.	ASS'Y. NO.	DATE
			28 DEC '60



LETTERING TO BE BLACK 1/8" HIGH.

REQ.	ITEM	PART NO.	DESCRIPTION	SYMBOL
			TMC (Canada) LIMITED OTTAWA ONTARIO	
STOCK SIZE				
			STAMPING DETAIL TRO-70	
MATERIAL		WEIGHT PER PC.		
TYPE & TEMPER			W.H. DAVIDSON	
			DRAWN	ELEC. DES. APP. MECH. DES. APP.
			CHECKED	FINAL APPROVAL
HEAT TREAT. SPEC.				
FINISH & SPEC. NO.				

ISSUE	ITEM	CHANGED FROM	DATE	CN. NO.	DRAFTS	CHECKER	ENG. APP.
TOLERANCES		SCALE 1:1		DIMENSIONS IN INCHES UNLESS OTHERWISE SPECIFIED			
ALL OTHERS		DEC. DIM. ± FRAC. DIM. ± ANGULAR DIM. ±		DRILL, PUNCH, COMMERCIAL STOCK SIZES AND MANUFACTURERS TOLERANCES ARE NOT INCLUDED.			

LD-10110

IF IT IS FOUND DESIRABLE TO CHANGE ANY TOLERANCE OR OTHER DETAIL SPECIFIED ON THIS DRAWING NOTIFY THE PURCHASER PROMPTLY.

LD10127

MAXIMUM ALLOWABLE TOLERANCES HAVE BEEN DETERMINED AND DEVIATIONS WILL BE CAUSE FOR REJECTION. REMOVE ALL BURRS AND SHARP EDGES

USED ON

MODEL

PROJECT NO.

ASS'Y. NO.

DATE

MSR

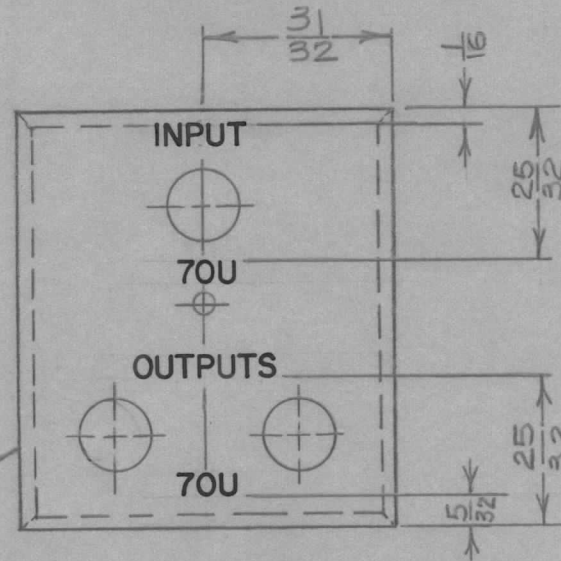
11/10/60

NOTICE TO PERSONS RECEIVING THIS DRAWING

THE TECHNICAL MATERIEL CORPORATION claims proprietary right in the material disclosed hereon. This drawing is issued in confidence for engineering information only and may not be reproduced or used to manufacture anything shown hereon without permission from THE TECHNICAL MATERIEL CORPORATION to the user. This drawing is loaned for mutual assistance and is subject to recall at any time.

Property of:

THE TECHNICAL MATERIEL CORPORATION
MAMARONECK, NEW YORK



MS10484

NOTE: STAMPING TO BE BLACK #1/8 HIGH.

REQ.	ITEM	PART NO.	DESCRIPTION	SYMBOL
			TMC (Canada) LIMITED OTTAWA ONTARIO	
		STOCK SIZE	LID, TRANSFORMER	
		MATERIAL	CAN, STAMPING	
		WEIGHT PER PC.	JPC	
		TYPE & TEMPER	DRAWN	ELEC. DES. APP. MECH. DES. APP.
		HEAT TREAT. SPEC.	CHECKED	FINAL APPROVAL
		FINISH & SPEC. NO.		LD10127

ISSUE	ITEM	CHANGED FROM	DATE	CN. NO.	DRAFTS	CHECKER	ENG. APP.
TOLERANCES			SCALE				
ALL OTHERS			DIMENSIONS IN INCHES UNLESS OTHERWISE SPECIFIED				
DEC. DIM. ±			DRILL, PUNCH, COMMERCIAL STOCK SIZES AND MANUFACTURERS TOLERANCES ARE NOT INCLUDED.				
FRAC. DIM. ±							
ANGULAR DIM. ±							

IF IT IS FOUND DESIRABLE TO CHANGE ANY TOLERANCE OR OTHER DETAIL SPECIFIED ON THIS DRAWING NOTIFY THE PURCHASER PROMPTLY.

LD10136

MAXIMUM ALLOWABLE TOLERANCES HAVE BEEN DETERMINED AND DEVIATIONS WILL BE CAUSE FOR REJECTION. REMOVE ALL BURRS AND SHARP EDGES

USED ON

MODEL

PROJECT NO.

ASS'Y. NO.

DATE

DA-101 CE 5107

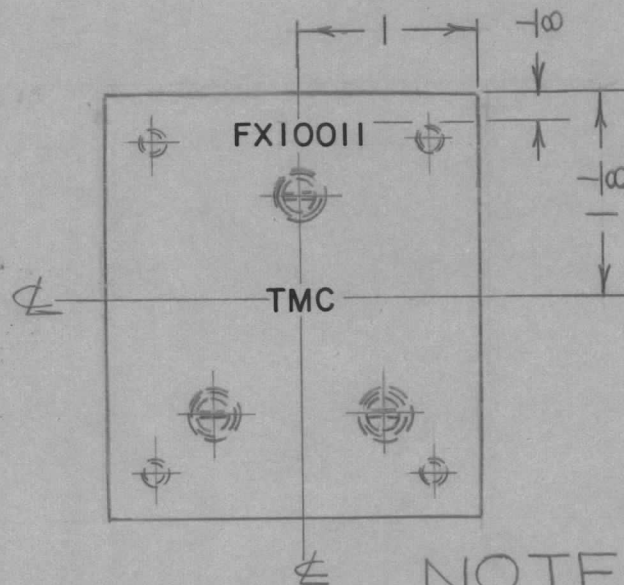
NOV.2/60

NOTICE TO PERSONS RECEIVING THIS DRAWING

THE TECHNICAL MATERIEL CORPORATION claims proprietary right in the material disclosed hereon. This drawing is issued in confidence for engineering information only and may not be reproduced or used to manufacture anything shown hereon without permission from THE TECHNICAL MATERIEL CORPORATION to the user. This drawing is loaned for mutual assistance and is subject to recall at any time.

Property of:

THE TECHNICAL MATERIEL CORPORATION
MAMARONECK, NEW YORK



NOTE: STAMPING TO BE BLACK & 1/8 HIGH ON TOP OF FILTER.

REQ.	ITEM	PART NO.	DESCRIPTION	SYMBOL
			TMC (Canada) LIMITED OTTAWA ONTARIO	
		STOCK SIZE	STAMPING, FILTER	
		MATERIAL	FX10011	
		WEIGHT PER PC.	JPC	
		TYPE & TEMPER	DRAWN	ELEC. DES. APP. MECH. DES. APP.
		HEAT TREAT. SPEC.	CHECKED	FINAL APPROVAL
		FINISH & SPEC. NO.		LD10136

ISSUE	ITEM	CHANGED FROM	DATE	CN. NO.	DRAFTS	CHECKER	ENG. APP.
TOLERANCES			SCALE				
ALL OTHERS	DEC. DIM. ±		DIMENSIONS IN INCHES UNLESS OTHERWISE SPECIFIED				
	FRAC. DIM. ±		DRILL, PUNCH, COMMERCIAL STOCK SIZES AND MANUFACTURERS TOLERANCES ARE NOT INCLUDED.				
ANGULAR DIM. ±							

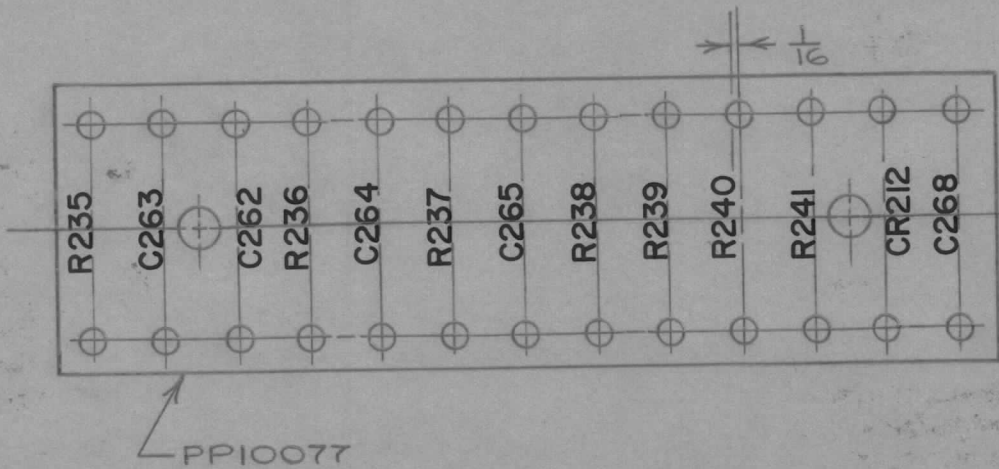
IF IT IS FOUND DESIRABLE TO CHANGE ANY TOLERANCE OR OTHER DETAIL SPECIFIED ON THIS DRAWING NOTIFY THE PURCHASER PROMPTLY.

LD 10137 A

MAXIMUM ALLOWABLE TOLERANCES HAVE BEEN DETERMINED AND DEVIATIONS WILL BE CAUSE FOR REJECTION. REMOVE ALL BURRS AND SHARP EDGES

USED ON

MODEL	PROJECT NO.	ASS'Y. NO.	DATE
DA-101	CE 5107		4/11/60



NOTE: STAMPING TO BE WHITE & 1/8 HIGH.

NOTICE TO PERSONS RECEIVING THIS DRAWING
 THE TECHNICAL MATERIEL CORPORATION claims proprietary right in the material disclosed herein. This drawing is issued in confidence for engineering information only and may not be reproduced or used to manufacture anything shown hereon without permission from THE TECHNICAL MATERIEL CORPORATION to the user. This drawing is loaned for mutual assistance and is subject to recall at any time.

Property of:
 THE TECHNICAL MATERIEL CORPORATION
 MAMARONECK, NEW YORK

REQ.	ITEM	PART NO.	DESCRIPTION	SYMBOL
			TMC (Canada) LIMITED OTTAWA ONTARIO	
		STOCK SIZE	STAMPING, MTG. BOARD	
		MATERIAL	OSCILLATOR	
		WEIGHT PER PC.	JPC	
		TYPE & TEMPER	DRAWN	ELEC. DES. APP.
		HEAT TREAT. SPEC.	CHECKED	MECH. DES. APP.
		FINISH & SPEC. NO.		FINAL APPROVAL
			LD10137	A

A	STAMPING WAS BLACK	SEPT 14/61	JPC	J.L.C.	R.W.S.		
ISSUE	ITEM	CHANGED FROM	DATE	CN. NO.	DRAFTS	CHECKER	ENG. APP.
TOLERANCES			SCALE				
ALL OTHERS			DIMENSIONS IN INCHES UNLESS OTHERWISE SPECIFIED				
			DRILL, PUNCH, COMMERCIAL STOCK SIZES AND MANUFACTURERS TOLERANCES ARE NOT INCLUDED.				

IF IT IS FOUND DESIRABLE TO CHANGE ANY TOLERANCE OR OTHER DETAIL SPECIFIED ON THIS DRAWING NOTIFY THE PURCHASER PROMPTLY.

LD10138 A

MAXIMUM ALLOWABLE TOLERANCES HAVE BEEN DETERMINED AND DEVIATIONS WILL BE CAUSE FOR REJECTION. REMOVE ALL BURRS AND SHARP EDGES

USED ON

MODEL

PROJECT NO.

ASS'Y. NO.

DATE

TR-154
TR-156

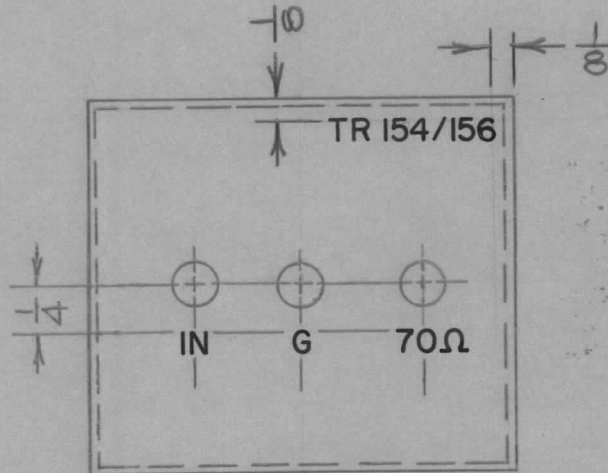
10/11/60

NOTICE TO PERSONS RECEIVING THIS DRAWING

THE TECHNICAL MATERIEL CORPORATION claims proprietary right in the material disclosed hereon. This drawing is issued in confidence for engineering information only and may not be reproduced or used to manufacture anything shown hereon without permission from THE TECHNICAL MATERIEL CORPORATION to the user. This drawing is loaned for mutual assistance and is subject to recall at any time.

Property of:

THE TECHNICAL MATERIEL CORPORATION
MAMARONECK, NEW YORK



MS10486

NOTE: STAMPING TO BE BLACK
± 1/8" HIGH

REQ.	ITEM	PART NO.	DESCRIPTION	SYMBOL
			TMC (Canada) LIMITED OTTAWA ONTARIO	
		STOCK SIZE	COVER, STAMPING,	
		MATERIAL	TRANSFORMER	
		WEIGHT PER PC.	JPC	
		TYPE & TEMPER	DRAWN	ELEC. DES. APP. MECH. DES. APP.
		HEAT TREAT. SPEC.	CHECKED	FINAL APPROVAL
		FINISH & SPEC. NO.		

A	TR#	ADDED	NOV 25/60	JPC	CHK	APP	
ISSUE	ITEM	CHANGED FROM	DATE	CN. NO.	DRAFTS	CHECKER	ENG. APP.
TOLERANCES			SCALE 1:1				
ALL OTHERS			DIMENSIONS IN INCHES UNLESS OTHERWISE SPECIFIED				
			DRILL, PUNCH, COMMERCIAL STOCK SIZES AND MANUFACTURERS TOLERANCES ARE NOT INCLUDED.				

LD10138 A

IF IT IS FOUND DESIRABLE TO CHANGE ANY TOLERANCE OR OTHER DETAIL SPECIFIED ON THIS DRAWING NOTIFY THE PURCHASER PROMPTLY.

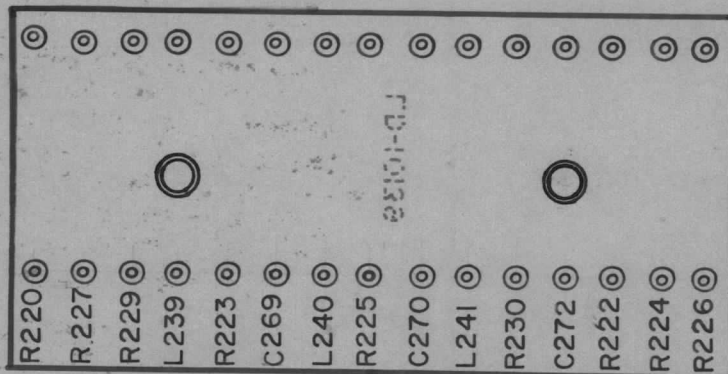
LD-10139 A

MAXIMUM ALLOWABLE TOLERANCES HAVE BEEN DETERMINED AND DEVIATIONS WILL BE CAUSE FOR REJECTION. REMOVE ALL BURRS AND SHARP EDGES

USED ON

MODEL	PROJECT NO.	ASS'Y. NO.	DATE
RFA-1			30/11/60

LD-10139 SILK SCREENED ON REAR OF BOARD



SILK SCREENING TO BE 1/8" HIGH

NOTICE TO PERSONS RECEIVING THIS DRAWING

THE TECHNICAL MATERIEL CORPORATION claims proprietary right in the material disclosed hereon. This drawing is issued in confidence for engineering information only and may not be reproduced or used to manufacture anything shown hereon without permission from THE TECHNICAL MATERIEL CORPORATION to the user. This drawing is loaned for mutual assistance and is subject to recall at any time.

Property of:

THE TECHNICAL MATERIEL CORPORATION
MAMARONECK, NEW YORK

REF: PP10078

REQ.	ITEM	PART NO.	DESCRIPTION	SYMBOL
			TMC (Canada) LIMITED OTTAWA ONTARIO	
		STOCK SIZE	LETTERING DETAIL	
		MATERIAL	TERMINAL BOARD RFA-1	
		WEIGHT PER PC.	WHDAVISON	KH
		TYPE & TEMPER	DRAWN	ELEC. DES. APP. MECH. DES. APP.
		HEAT TREAT. SPEC.	LD-10139	A
		FINISH & SPEC. NO.	LD-10139	A

A	REF: ADDED LD10139 WAS A1542D	JAN 5 1961	JPC	KH	KH		
ISSUE	ITEM	CHANGED FROM	DATE	CN. NO.	DRAFTS	CHECKER	ENG. APP.
TOLERANCES		SCALE 1:1		DIMENSIONS IN INCHES UNLESS OTHERWISE SPECIFIED			
ALL OTHERS	DEC. DIM. ± FRAC. DIM. ± ANGULAR DIM. ±	DRILL, PUNCH, COMMERCIAL STOCK SIZES AND MANUFACTURERS TOLERANCES ARE NOT INCLUDED.					

IF IT IS FOUND DESIRABLE TO CHANGE ANY TOLERANCE OR OTHER DETAIL SPECIFIED ON THIS DRAWING NOTIFY THE PURCHASER PROMPTLY.

LD10140

MAXIMUM ALLOWABLE TOLERANCES HAVE BEEN DETERMINED AND DEVIATIONS WILL BE CAUSE FOR REJECTION. REMOVE ALL BURRS AND SHARP EDGES

USED ON

MODEL

PROJECT NO.

ASS'Y. NO.

DATE

TR155

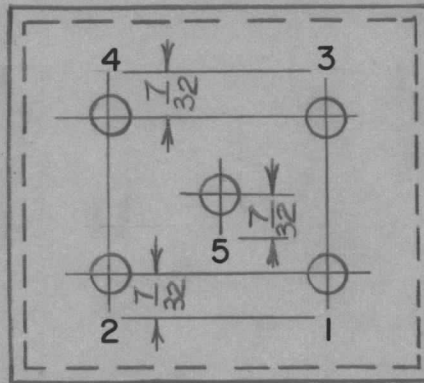
2/12/60

NOTICE TO PERSONS RECEIVING THIS DRAWING

THE TECHNICAL MATERIEL CORPORATION claims proprietary right in the material disclosed hereon. This drawing is issued in confidence for engineering information only and may not be reproduced or used to manufacture anything shown hereon without permission from THE TECHNICAL MATERIEL CORPORATION to the user. This drawing is loaned for mutual assistance and is subject to recall at any time.

Property of:

THE TECHNICAL MATERIEL CORPORATION
MAMARONECK, NEW YORK



REF: MS10490.

NOTE: STAMPING TO BE BLACK & 1/8 HIGH.

REQ.	ITEM	PART NO.	DESCRIPTION	SYMBOL
			TMC (Canada) LIMITED OTTAWA ONTARIO	
STOCK SIZE				
			STAMPING, XFMR.	
MATERIAL		WEIGHT PER PC.	BASE.	
TYPE & TEMPER			JPC	<i>M. W.</i>
			DRAWN	ELEC. DES. APP. MECH. DES. APP.
HEAT TREAT. SPEC.			CHECKED	FINAL APPROVAL
FINISH & SPEC. NO.				LD10140

ISSUE	ITEM	CHANGED FROM	DATE	CN. NO.	DRAFTS	CHECKER	ENG. APP.
TOLERANCES		SCALE 1:1					
ALL OTHERS	DEC. DIM. ±		DIMENSIONS IN INCHES				
	FRAC. DIM. ±		UNLESS OTHERWISE SPECIFIED				
ANGULAR DIM. ±		DRILL, PUNCH, COMMERCIAL STOCK SIZES AND MANUFACTURERS TOLERANCES ARE NOT INCLUDED.					

IF IT IS FOUND DESIRABLE TO CHANGE ANY TOLERANCE OR OTHER DETAIL SPECIFIED ON THIS DRAWING NOTIFY THE PURCHASER PROMPTLY.

LD10144 A

MAXIMUM ALLOWABLE TOLERANCES HAVE BEEN DETERMINED AND DEVIATIONS WILL BE CAUSE FOR REJECTION. REMOVE ALL BURRS AND SHARP EDGES

USED ON

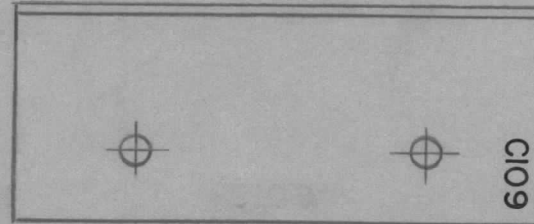
MODEL	PROJECT NO.	ASS'Y. NO.	DATE
PSP-350			16/12/60

NOTICE TO PERSONS RECEIVING THIS DRAWING

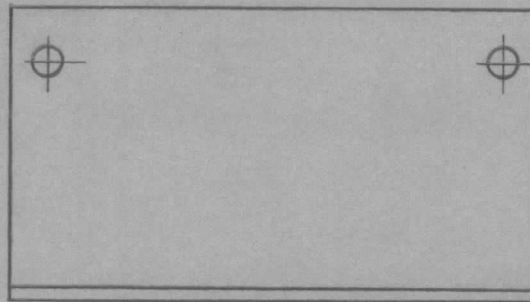
THE TECHNICAL MATERIEL CORPORATION claims proprietary right in the material disclosed hereon. This drawing is issued in confidence for engineering information only and may not be reproduced or used to manufacture anything shown hereon without permission from THE TECHNICAL MATERIEL CORPORATION to the user. This drawing is loaned for mutual assistance and is subject to recall at any time.

Property of:

THE TECHNICAL MATERIEL CORPORATION
MAMARONECK, NEW YORK



1/8 HIGH BLACK.



REF: MS10494A.

REQ.	ITEM	PART NO.	DESCRIPTION	SYMBOL
			TMC (Canada) LIMITED OTTAWA ONTARIO	
		STOCK SIZE	LETTERING, CAPACITOR	
		MATERIAL WEIGHT PER PC.	MTG. BRACKET.	
			JPC	
		TYPE & TEMPER	DRAWN	ELEC. DES. APP. MECH. DES. APP.
		HEAT TREAT. SPEC.	CHECKED	FINAL APPROVAL
		FINISH & SPEC. NO.		LD10144 A

A	LD10144A WASLD403	DEC 16/60	JPC	VH			
ISSUE	ITEM	CHANGED FROM	DATE	CN. NO.	DRAFTS	CHECKER	ENG. APP.
TOLERANCES			SCALE				
ALL OTHERS	DEC. DIM. ±		DIMENSIONS IN INCHES UNLESS OTHERWISE SPECIFIED				
	FRAC. DIM. ±		DRILL, PUNCH, COMMERCIAL STOCK SIZES AND MANUFACTURERS TOLERANCES ARE NOT INCLUDED.				
		ANGULAR DIM. ±					

IF IT IS FOUND DESIRABLE TO CHANGE ANY TOLERANCE OR OTHER DETAIL SPECIFIED ON THIS DRAWING NOTIFY THE PURCHASER PROMPTLY.

LD10149 A

MAXIMUM ALLOWABLE TOLERANCES HAVE BEEN DETERMINED AND DEVIATIONS WILL BE CAUSE FOR REJECTION. REMOVE ALL BURRS AND SHARP EDGES

USED ON

MODEL

PROJECT NO.

ASS'Y. NO.

DATE

PSP-350

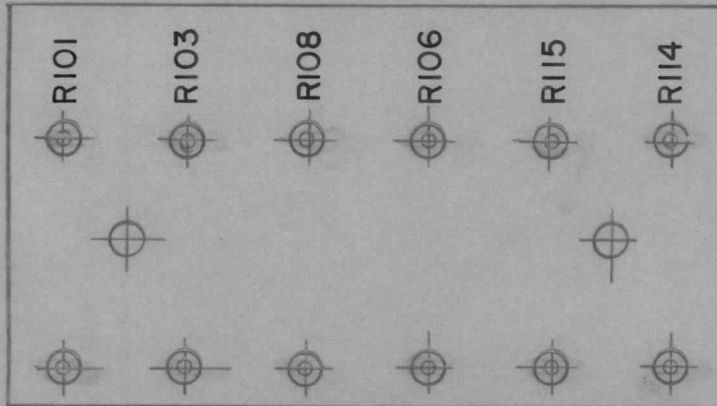
JAN 24
1961

NOTICE TO PERSONS RECEIVING THIS DRAWING

THE TECHNICAL MATERIEL CORPORATION claims proprietary right in the material disclosed hereon. This drawing is issued in confidence for engineering information only and may not be reproduced or used to manufacture anything shown hereon without permission from THE TECHNICAL MATERIEL CORPORATION to the user. This drawing is loaned for mutual assistance and is subject to recall at any time.

Property of:

THE TECHNICAL MATERIEL CORPORATION
MAMARONECK, NEW YORK



NOTE: LETTERING TO BE BLACK & 1/8" HIGH.
REF: PP10079A.

REQ.	ITEM	PART NO.	DESCRIPTION	SYMBOL			
			TMC (Canada) LIMITED OTTAWA ONTARIO				
STOCK SIZE			LETTERING DETAILS				
MATERIAL		WEIGHT PER PC.	TERMINAL BOARD.				
A		LD10147A WAS A1534A	J.P.C.	KA			
ISSUE	ITEM	CHANGED FROM	DATE	CN. NO.	DRAFTS	CHECKER	ENG. APP.
TOLERANCES		SCALE					
ALL OTHERS		DIMENSIONS IN INCHES UNLESS OTHERWISE SPECIFIED					
DEC. DIM. ±		DRILL, PUNCH, COMMERCIAL STOCK SIZES AND MANUFACTURERS TOLERANCES ARE NOT INCLUDED.					
FRAC. DIM. ±		HEAT TREAT. SPEC.					
ANGULAR DIM. ±		FINISH & SPEC. NO.					
DRAWN			ELEC. DES. APP.	MECH. DES. APP.			
CHECKED			FINAL APPROVAL				
			LD10149 A				

IF IT IS FOUND DESIRABLE TO CHANGE ANY TOLERANCE OR OTHER DETAIL SPECIFIED ON THIS DRAWING NOTIFY THE PURCHASER PROMPTLY.

LD10150 A

MAXIMUM ALLOWABLE TOLERANCES HAVE BEEN DETERMINED AND DEVIATIONS WILL BE CAUSE FOR REJECTION. REMOVE ALL BURRS AND SHARP EDGES

USED ON

MODEL

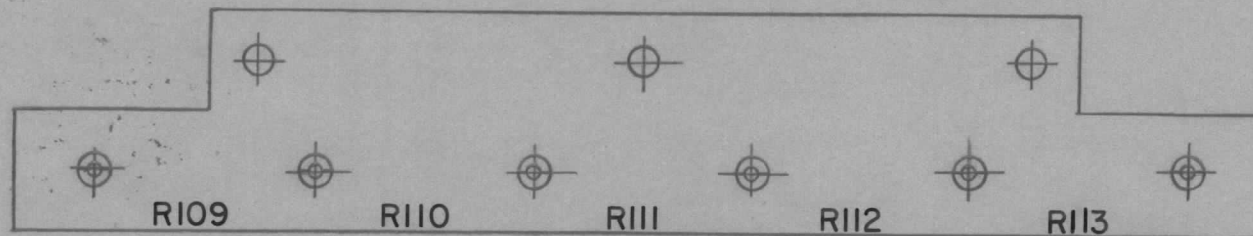
PROJECT NO.

ASS'Y. NO.

DATE

PSP-350

JAN 25
1961



NOTE: LETTERING TO BE BLACK & 1/8" HIGH.

REF: PPI0080A

REQ.	ITEM	PART NO.	DESCRIPTION	SYMBOL
			TMC (Canada) LIMITED OTTAWA ONTARIO	
		STOCK SIZE	TERMINAL BOARD	
		MATERIAL WEIGHT PER PC.	METERING	
		TYPE & TEMPER	JPC	KH
		HEAT TREAT. SPEC.	DRAWN	ELEC. DES. APP. MECH. DES. APP.
		FINISH & SPEC. NO.	CHECKED	FINAL APPROVAL
				LD10150 A

A		LD10080A WAS A1533A	JAN 25/61	JPC		KH	
ISSUE	ITEM	CHANGED FROM	DATE	CN. NO.	DRAFTS	CHECKER	ENG. APP.
TOLERANCES			SCALE				
ALL OTHERS	DEC. DIM. ±	DIMENSIONS IN INCHES UNLESS OTHERWISE SPECIFIED					
	FRAC. DIM. ±	DRILL, PUNCH, COMMERCIAL STOCK SIZES AND MANUFACTURERS TOLERANCES ARE NOT INCLUDED.					
	ANGULAR DIM. ±						

IF IT IS FOUND DESIRABLE TO CHANGE ANY TOLERANCE OR OTHER DETAIL SPECIFIED ON THIS DRAWING NOTIFY THE PURCHASER PROMPTLY.

LD10155A

MAXIMUM ALLOWABLE TOLERANCES HAVE BEEN DETERMINED AND DEVIATIONS WILL BE CAUSE FOR REJECTION. REMOVE ALL BURRS AND SHARP EDGES

USED ON

MODEL	PROJECT NO.	ASS'Y. NO.	DATE
AMC6 5			15/3/61

NOTICE TO PERSONS RECEIVING THIS DRAWING

THE TECHNICAL MATERIEL CORPORATION claims proprietary right in the material disclosed hereon. This drawing is issued in confidence for engineering information only and may not be reproduced or used to manufacture anything shown hereon without permission from THE TECHNICAL MATERIEL CORPORATION to the user. This drawing is loaned for mutual assistance and is subject to recall at any time.

Property of:

THE TECHNICAL MATERIEL CORPORATION
MAMARONECK, NEW YORK



NOTE: STAMPING TO BE BLACK & 3/32" HIGH.

REF: MS10507

REQ.	ITEM	PART NO.	DESCRIPTION	SYMBOL
			TMC (Canada) LIMITED OTTAWA ONTARIO	
		STOCK SIZE	STAMPING, CAN	
		MATERIAL WEIGHT PER PC.	OSCILLATOR	
		TYPE & TEMPER	JPC	<i>u. kr</i>
		HEAT TREAT. SPEC.	DRAWN	ELEC. DES. APP. MECH. DES. APP.
		FINISH & SPEC. NO.	CHECKED	FINAL APPROVAL
				LD10155 A

A	CH PICT. A10206 WAS A10190	10-12-64	12499	<i>92</i>	<i>Shaw</i>	<i>MMK</i>	
ISSUE	ITEM	CHANGED FROM	DATE	CN. NO.	DRAFTS	CHECKER	ENG. APP.
TOLERANCES		SCALE 1:1					
ALL OTHERS		DIMENSIONS IN INCHES UNLESS OTHERWISE SPECIFIED					
		DRILL, PUNCH, COMMERCIAL STOCK SIZES AND MANUFACTURERS TOLERANCES ARE NOT INCLUDED.					

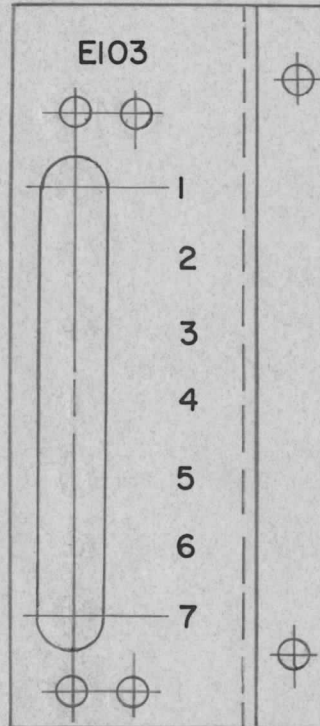
ISSUE	ITEM	CHANGED FROM	DATE	CN. NO.	DRAFTS	CHECKER	ENG. APP.	REQ.	ITEM	PART NO.	DESCRIPTION	SYMBOL
-------	------	--------------	------	---------	--------	---------	-----------	------	------	----------	-------------	--------

NOTICE TO PERSONS RECEIVING THIS DRAWING

THE TECHNICAL MATERIEL CORPORATION claims proprietary right in the material disclosed hereon. This drawing is issued in confidence for engineering information only and may not be reproduced or used to manufacture anything shown hereon without permission from THE TECHNICAL MATERIEL CORPORATION to the user. This drawing is loaned for mutual assistance and is subject to recall at any time.

Property of:

THE TECHNICAL MATERIEL CORPORATION
MAMARONECK, NEW YORK

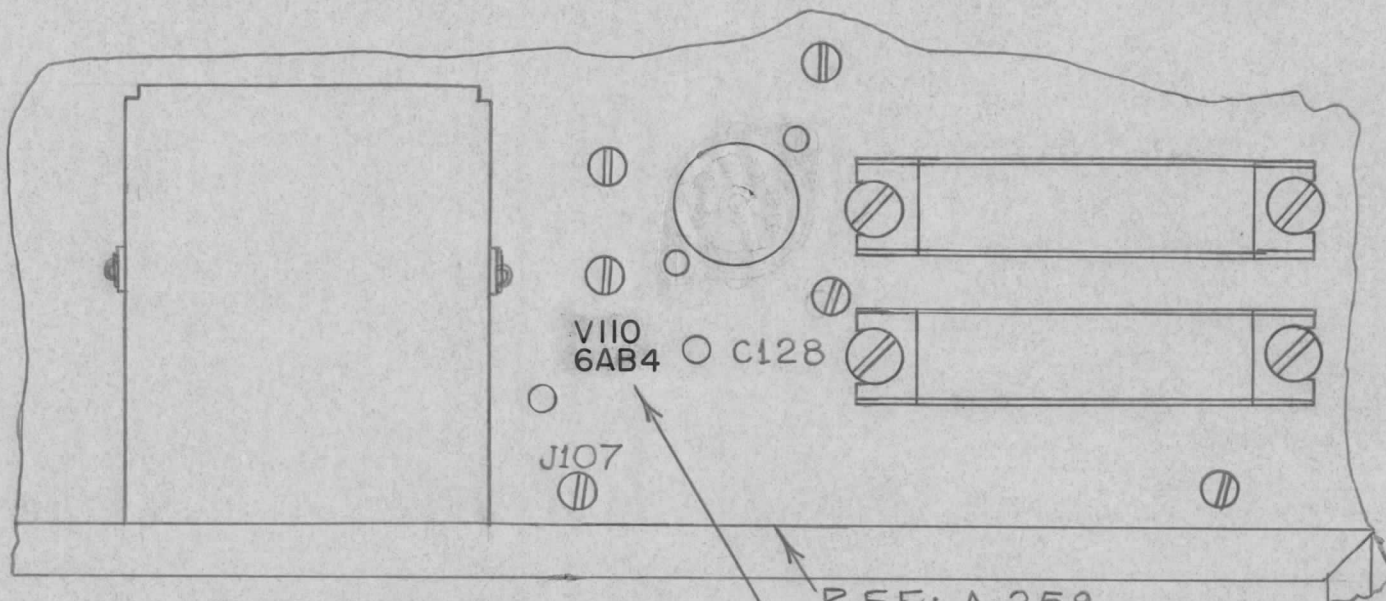


NOTE: LETTERING TO BE BLACK & 1/8" HIGH GOTHIC.

REF: MS10534

FFR-3 CODAN		E 1148 P		MAY 11/61		TMC (Canada) LIMITED		OTTAWA ONTARIO	
MODEL	PROJECT NO.	ASS'Y. NO.	DATE	STOCK SIZE		LETTERING, DETAILS			
USED ON				MATERIAL	WEIGHT PER PC.	BKT, TERMINAL			
MAXIMUM ALLOWABLE TOLERANCES HAVE BEEN DETERMINED AND DEVIATIONS WILL BE CAUSE FOR REJECTION. REMOVE ALL BURRS AND SHARP EDGES		IF IT IS FOUND DESIRABLE TO CHANGE ANY TOLERANCE OR OTHER DETAIL SPECIFIED ON THIS DRAWING NOTIFY THE PURCHASER PROMPTLY.		TYPE & TEMPER		JPC	M.B.		
TOLERANCES		SCALE 1:1		HEAT TREAT. SPEC.		DRAWN	ELEC. DES. APP.	MECH. DES. APP.	
ALL OTHERS	DEC. DIM. ±	DIMENSIONS IN INCHES UNLESS OTHERWISE SPECIFIED		FINISH & SPEC. NO.		J.P.	M.C.		
	FRAC. DIM. ±	DRILL, PUNCH, COMMERCIAL STOCK SIZES AND MANUFACTURERS TOLERANCES ARE NOT INCLUDED.				CHECKED	FINAL APPROVAL		
	ANGULAR DIM. ±							LD10158	

ISSUE	ITEM	CHANGED FROM	DATE	CN. NO.	DRAFTS	CHECKER	ENG. APP.	REQ.	ITEM	PART NO.	DESCRIPTION	SYMBOL
-------	------	--------------	------	---------	--------	---------	-----------	------	------	----------	-------------	--------



SPACE FOR DRAWER

REF: A-258.

STAMPING TO BE BLACK & 1/8" HIGH GOTHIC.

FFR-3 CODAN		E 1148-P		MAY 16/61		TMC (Canada) LIMITED OTTAWA ONTARIO	
MODEL	PROJECT NO.	ASS'Y. NO.	DATE	STOCK SIZE			
USED ON				MATERIAL	WEIGHT PER PC.	STAMPING DETAILS	
MAXIMUM ALLOWABLE TOLERANCES HAVE BEEN DETERMINED AND DEVIATIONS WILL BE CAUSE FOR REJECTION. REMOVE ALL BURRS AND SHARP EDGES		IF IT IS FOUND DESIRABLE TO CHANGE ANY TOLERANCE OR OTHER DETAIL SPECIFIED ON THIS DRAWING NOTIFY THE PURCHASER PROMPTLY.		TYPE & TEMPER		CHASSIS, TOP	
						J.P.C.	M. Kr.
TOLERANCES		SCALE 1:1		HEAT TREAT. SPEC.		ELEC. DES. APP.	
ALL OTHERS	DEC. DIM. ±	DIMENSIONS IN INCHES UNLESS OTHERWISE SPECIFIED				MECH. DES. APP.	
	FRAC. DIM. ±	DRILL, PUNCH, COMMERCIAL STOCK SIZES AND MANUFACTURERS TOLERANCES ARE NOT INCLUDED.		FINISH & SPEC. NO.		J.L. (DRAWN) S.V.C. (MECH. DES. APP.)	
	ANGULAR DIM. ±					CHECKED FINAL APPROVAL	
						LD10159	

IF IT IS FOUND DESIRABLE TO CHANGE ANY TOLERANCE OR OTHER DETAIL SPECIFIED ON THIS DRAWING NOTIFY THE PURCHASER PROMPTLY.

LD10160

MAXIMUM ALLOWABLE TOLERANCES HAVE BEEN DETERMINED AND DEVIATIONS WILL BE CAUSE FOR REJECTION. REMOVE ALL BURRS AND SHARP EDGES

USED ON

MODEL

PROJECT NO.

ASS'Y. NO.

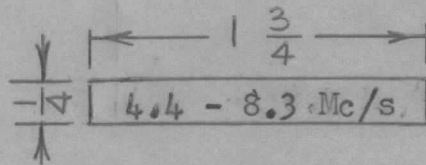
DATE

AFU-1 E1143-P

JUNE.2
1961

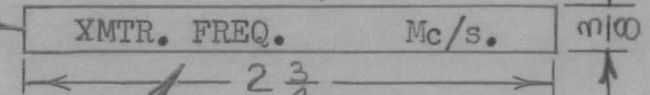
Stiff white paper

(Space for 5 digits)

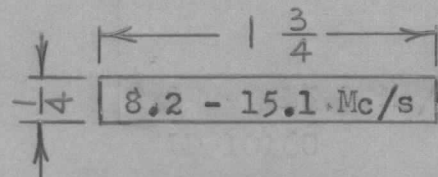


LD-10160-1

Lettering typewritten



LD-10160-3



LD-10160-2

NOTE: Type in specific transmitter frequency.

REQ.	ITEM	PART NO.	DESCRIPTION	SYMBOL
			TMC (Canada) LIMITED OTTAWA ONTARIO	
		STOCK SIZE	IDENTIFICATION SLIPS	
		MATERIAL		ANTENNA FILTER UNIT
		WEIGHT PER PC.	JPC	R.W.J.
		TYPE & TEMPER	DRAWN	ELEC. DES. APP.
			MECH. DES. APP.	
		HEAT TREAT. SPEC.	Checked	FINAL APPROVAL
		FINISH & SPEC. NO.		LD10160

ISSUE	ITEM	CHANGED FROM	DATE	CN. NO.	DRAFTS	CHECKER	ENG. APP.
TOLERANCES			SCALE 1:1				
ALL OTHERS	DEC. DIM. ± FRAC. DIM. ± ANGULAR DIM. ±		DIMENSIONS IN INCHES UNLESS OTHERWISE SPECIFIED DRILL, PUNCH, COMMERCIAL STOCK SIZES AND MANUFACTURERS TOLERANCES ARE NOT INCLUDED.				

EOKW

IF IT IS FOUND DESIRABLE TO CHANGE ANY TOLERANCE OR OTHER DETAIL SPECIFIED ON THIS DRAWING NOTIFY THE PURCHASER PROMPTLY.

LD10161

MAXIMUM ALLOWABLE TOLERANCES HAVE BEEN DETERMINED AND DEVIATIONS WILL BE CAUSE FOR REJECTION. REMOVE ALL BURRS AND SHARP EDGES

USED ON

MODEL

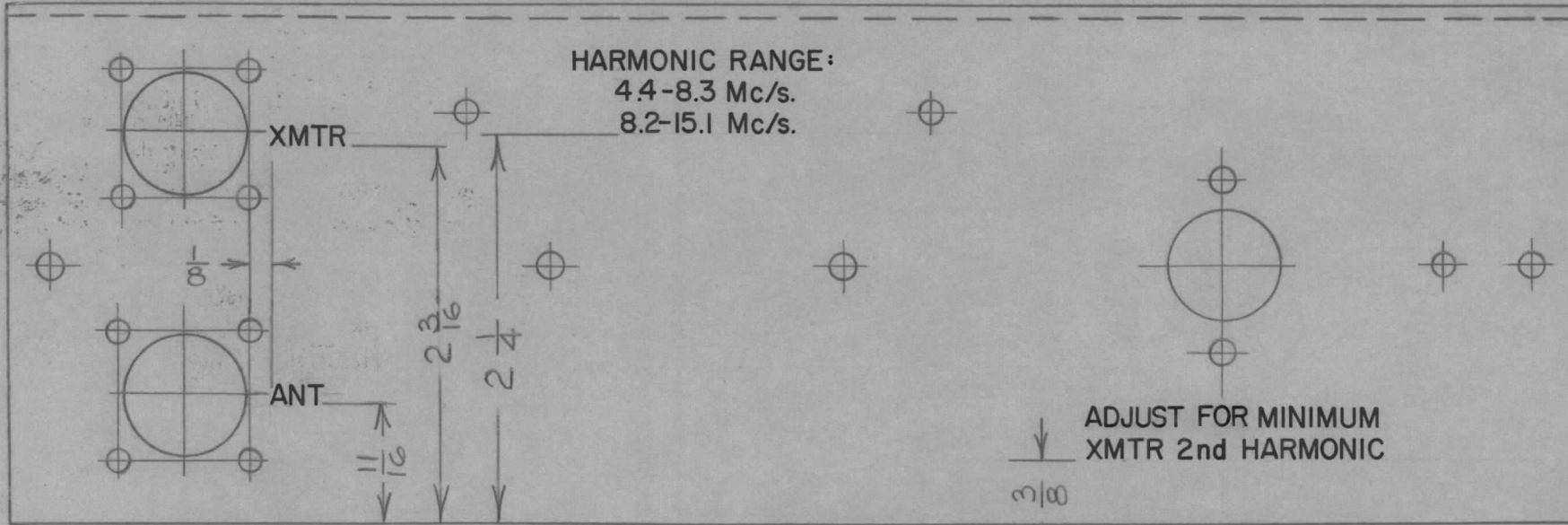
PROJECT NO.

ASS'Y. NO.

DATE

AFU-1 E1143-P

6/1/61



NOTE: LETTERING TO BE BLACK & 1/8" HIGH GOTHIC.

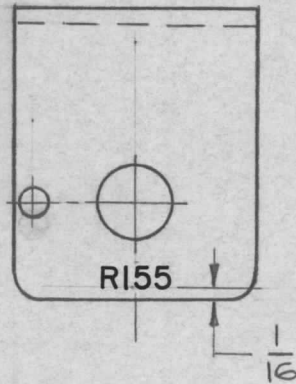
REF: MS10538

REQ.	ITEM	PART NO.	DESCRIPTION	SYMBOL
			TMC (Canada) LIMITED OTTAWA ONTARIO	
STOCK SIZE				
MATERIAL		WEIGHT PER PC.	CHASSIS LETTERING	
			ANTENNA FILTER UNIT	
TYPE & TEMPER			JPC	RWJ.
			DRAWN	ELEC. DES. APP. MECH. DES. APP.
HEAT TREAT. SPEC.			f.l.b.	Doe
			CHECKED	FINAL APPROVAL
FINISH & SPEC. NO.				LD10161

ISSUE	ITEM	CHANGED FROM	DATE	CN. NO.	DRAFTS	CHECKER	ENG. APP.
TOLERANCES		SCALE 1:1		DIMENSIONS IN INCHES UNLESS OTHERWISE SPECIFIED			
ALL OTHERS		DEC. DIM. ±		DRILL, PUNCH, COMMERCIAL STOCK SIZES AND MANUFACTURERS TOLERANCES ARE NOT INCLUDED.			
		FRAC. DIM. ±					
		ANGULAR DIM. ±					

THE CONTENTS OF THIS DRAWING ARE THE EXCLUSIVE PROPERTY OF THE TECHNICAL MATERIEL CORP. ITS UNAUTHORIZED USE FOR REPRODUCTION IN WHOLE OR IN PART IS STRICTLY FORBIDDEN.

REQ. PER UNIT 1	USED ON			LD-10168
	MODEL AMC6-2&3	ASS'Y. NO.	DATE	

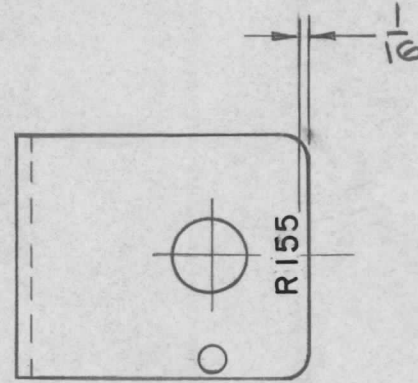


MARKING PROCESS:
AS PER TMC SPEC S-727
LETTERING 1/8 HIGH BLACK GOTHIC,
LOCATED AS SHOWN.

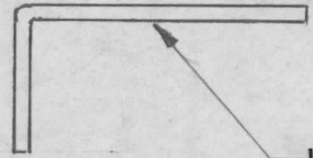
REF : MS-10554

SYM	DESCRIPTION	DATE	CH. NO.	DRAFTS	CHECKER	ENG. APP.	REQ. ITEM	PART NO.	DESCRIPTION	SYMBOL	
UNLESS OTHERWISE SPECIFIED DIMENSIONS ARE IN INCHES AND INCLUDE CHEMICALLY APPLIED OR PLATED FINISHES							STOCK SIZE		THE TECHNICAL MATERIEL CORP. MAMARONECK. NEW YORK		
SCALE 1:1							MATERIAL		LETTERING, BRACKET SUPPORT		
DECIMALS .X ± .05 .XX ± .01 .XXX ± .005							TYPE & TEMPER		DRAWN <i>JWZ</i>	CHECKED <i>JH 4/5/63</i>	FINAL APPROVAL <i>BP</i>
FRACTIONS ± 1/64 ANGLES ± 0° 30'							HEAT TREAT. SPEC.		FINISH & SPEC. NO.		ELEC. DES. APP. MECH. DES. APP.
TOLERANCES							FINISH & SPEC. NO.		LD-10168		

REQ. PER UNIT	USED ON			LD-10168	A
	MODEL	ASS'Y. NO.	DATE		
	AMCG-2&3		9-23-63		



MARKING PER TMC SPEC S-727
 LETTERING 1/8 HIGH BLACK COATHIC
 PER TMC SPEC S-727.

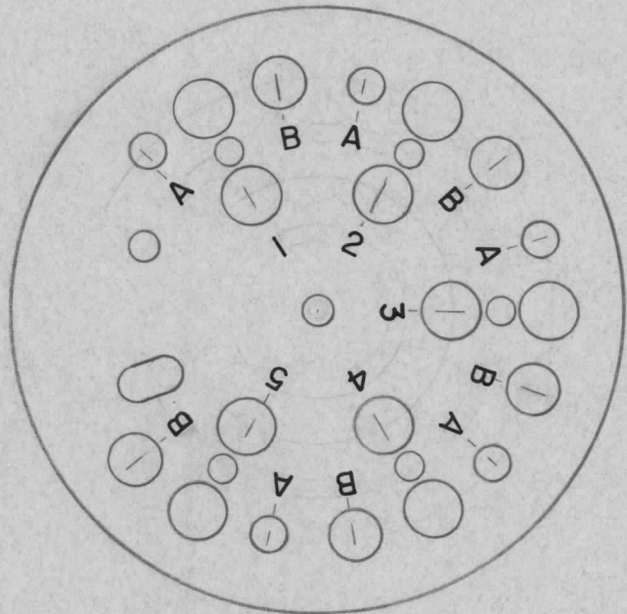


LD-10168-A / MS-10554-A
 TMC PART NO. ON
 INSIDE AS SHOWN

REF: MS-10554-A

REQ. ITEM	PART NO.	CANADA	DESCRIPTION	SYMBOL							
			THE TECHNICAL MATERIEL CORP. MAMARONECK. NEW YORK								
			MARKING, BRACKET, SUPPORT								
			MARKING METHOD: PER TMC SPEC S-727								
A	REDRAWN, MARKING NOTES ADDED	10/31/63	10328	JWZ JDE JFB							
SYM	DESCRIPTION	DATE	CH. NO.	DRAFTS	CHECKER	ENG. APP.	MATERIAL				
UNLESS OTHERWISE SPECIFIED DIMENSIONS ARE IN INCHES AND INCLUDE CHEMICALLY APPLIED OR PLATED FINISHES		SCALE		1/1					JWZ	JDE 9/23/63	BP
DECIMALS .X ± .05 .XX ± .01 .XXX ± .005	TOLERANCES	FRACTIONS ± 1/64 ANGLES ± 0° 30'	CODE	TYPE & TEMPER		HEAT TREAT. SPEC.	DRAWN	CHECKED	FINAL APPROVAL		
								ANA 10/5/63	LD-10168 A		
				FINISH & SPEC. NO.		ELEC. DES. APP.	MECH. DES. APP.				

ISSUE	ITEM	CHANGED FROM	DATE	CN. NO.	DRAFTS	CHECKER	ENG. APP.	REQ.	ITEM	PART NO.	DESCRIPTION	SYMBOL
-------	------	--------------	------	---------	--------	---------	-----------	------	------	----------	-------------	--------

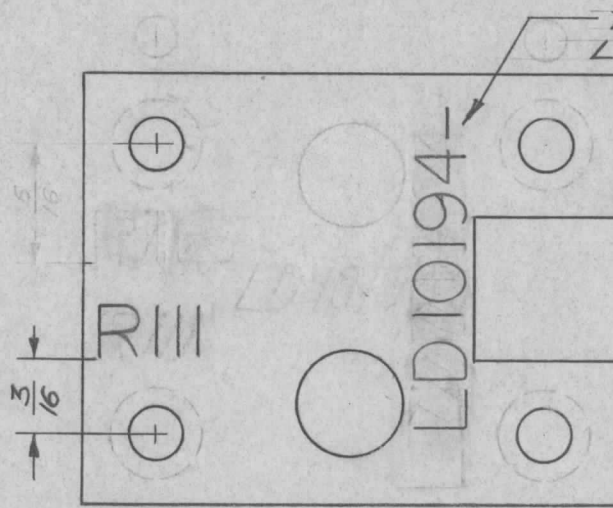


LETTERING: 1/8 HIGH BLACK GOTHIC, LOCATED AS SHOWN

REF: MS10576

		A-10208A 28-9-64				TMC (Canada) LIMITED OTTAWA ONTARIO	
MODEL	PROJECT NO.	ASS'Y. NO.	DATE	STOCK SIZE			
USED ON				MATERIAL	WEIGHT PER PC.	LETTERING DETAIL	
MAXIMUM ALLOWABLE TOLERANCES HAVE BEEN DETERMINED AND DEVIATIONS WILL BE CAUSE FOR REJECTION. REMOVE ALL BURRS AND SHARP EDGES		IF IT IS FOUND DESIRABLE TO CHANGE ANY TOLERANCE OR OTHER DETAIL SPECIFIED ON THIS DRAWING NOTIFY THE PURCHASER PROMPTLY.		XTAL MTG PLATE		RD	KA
						TYPE & TEMPER	
TOLERANCES		SCALE		HEAT TREAT. SPEC.		CHECKED	
ALL OTHERS	DEC. DIM. ±	DIMENSIONS IN INCHES UNLESS OTHERWISE SPECIFIED		FINISH & SPEC. NO.		FINAL APPROVAL	
	FRAC. DIM. ±	DRILL, PUNCH, COMMERCIAL STOCK SIZES AND MANUFACTURERS TOLERANCES ARE NOT INCLUDED.				LD10181	
	ANGULAR DIM. ±					Ø	

ISSUE	ITEM	CHANGED FROM	DATE	CN. NO.	DRAFTS	CHECKER	ENG. APP.	REQ.	ITEM	PART NO.	DESCRIPTION	SYMBOL
Ø		RELEASED FOR PROD	17-1-66		RL							
A		LMC 20 REF ADD	19-4-66		RD							
B		RII2 DELETED	MAY 10/66	CEMN 008	GM							
C		1 HOLE DELETED REF: MS10609	MAY 11/66		RPL							



FRONT VIEW

MARKING PROCESS: AS PER TMC SPECIFICATION S-727.

LETTERING: 1/8 HIGH BLACK GOTHIC, LOCATED AS SHOWN.

LMC 20	046/66	A10458	19-4-66
AMC 20	020/65	A10376	20-10-65
MODEL	PROJECT NO.	ASS'Y. NO.	DATE

Ref: MS 10 609

USED ON		STOCK SIZE		TMC (Canada) LIMITED OTTAWA ONTARIO	
MAXIMUM ALLOWABLE TOLERANCES HAVE BEEN DETERMINED AND DEVIATIONS WILL BE CAUSE FOR REJECTION. REMOVE ALL BURRS AND SHARP EDGES		IF IT IS FOUND DESIRABLE TO CHANGE ANY TOLERANCE OR OTHER DETAIL SPECIFIED ON THIS DRAWING NOTIFY THE PURCHASER PROMPTLY.		POTENTIOMETER MOUNTING	
TOLERANCES		SCALE 2:1		BRACKET	
ALL OTHERS		DIMENSIONS IN INCHES UNLESS OTHERWISE SPECIFIED		DRAWN	
DEC. DIM. ±		DRILL, PUNCH, COMMERCIAL STOCK SIZES AND MANUFACTURERS TOLERANCES ARE NOT INCLUDED.		ELEC. DES. APP.	
FRAC. DIM. ±				MECH. DES. APP.	
ANGULAR DIM. ±				CHECKED	
				FINAL APPROVAL	
				LD 10 194	
				C	