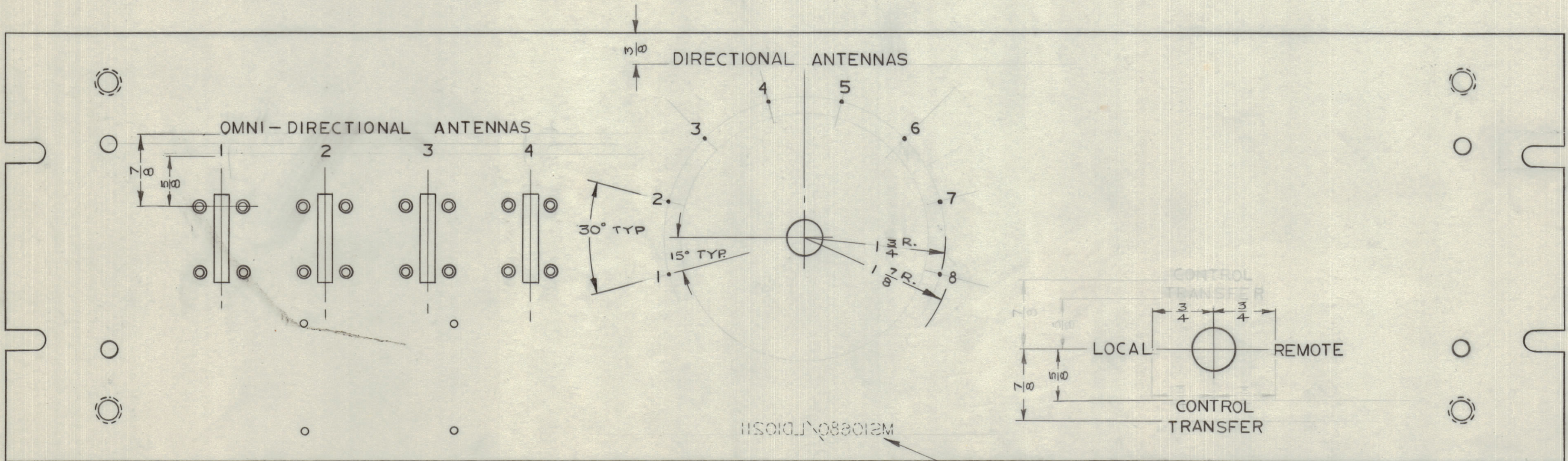


IF IT IS FOUND DESIRABLE TO CHANGE ANY TOLERANCE OR OTHER DETAIL SPECIFIED ON THIS DRAWING NOTIFY THE PURCHASER PROMPTLY.

MAXIMUM ALLOWABLE TOLERANCES HAVE BEEN DETERMINED AND DEVIATIONS WILL BE CAUSE FOR REJECTION. REMOVE ALL BURRS AND SHARP EDGES



**FINISH NOTES:**

- A AFTER ENGRAVING
  - 1. S114 - ZINC CHROMATE PRIMER FRONT AND
  - 2. S115 - SMOOTH GREY ENAMEL EDGES ONLY
  - b) I-GP-125 PT.1 COLOUR CHIP NO. 1-107 GREY
- ENGRAVING PER TMC SPEC. 5566

RUBBER STAMP TMC PART NO. 1/8 HIGH GOTHIC ON REAR OF PANEL

HEIGHT OF LETTERS	DEPTH OF STROKE	WIDTH OF STROKE
1/8	.020	.020
DOTS	.020	1/16 DIA.

ENGRAVING TO BE WHITE FILLED AFTER PAINTING

REF: MS10680

AUBREY

ISSUE	ITEM	CHANGED FROM	DATE	CN. NO.	DRAFTS	CHECKER	ENG. APP.
C		REVISED AS PER CEMN	AUG 31/66	071	GM	RPL	[Signature]
B		CONTROL TRANSFER ENGRAVING RELOCATED	MAY 20/66		RPL	RPL	[Signature]
A		.020 WAS .010	APRIL 22/66		RPL	RPL	[Signature]
Ø		RELEASED FOR PROD	MAR. 16/66		RPL	RPL	[Signature]

TOLERANCES SCALE: 1:1

ALL OTHERS DEC. DIM. ±  
FRAC. DIM. ±  
ANGULAR DIM. ±

DRILL, PUNCH, COMMERCIAL STOCK SIZES AND MANUFACTURERS TOLERANCES ARE NOT INCLUDED.

AX10012	030/66		MAR. 15/66
MODEL	PROJECT NO.	ASS'Y. NO.	DATE

USED ON

REQ.	ITEM	PART NO.	DESCRIPTION	SYMBOL
			<b>TMC (Canada) LIMITED</b> OTTAWA ONTARIO	
			ENGRAVING, PANEL FRONT	
			MATERIAL WEIGHT PER PC.	
			TYPE & TEMPER	
			HEAT TREAT. SPEC.	
			SEE NOTES	
			FINISH & SPEC. NO.	

RPL  
DRAWN [Signature] ELEC. DES. APP. [Signature] MECH. DES. APP. [Signature]  
CHECKED [Signature] FINAL APPROVAL [Signature]

LD 10211 G