

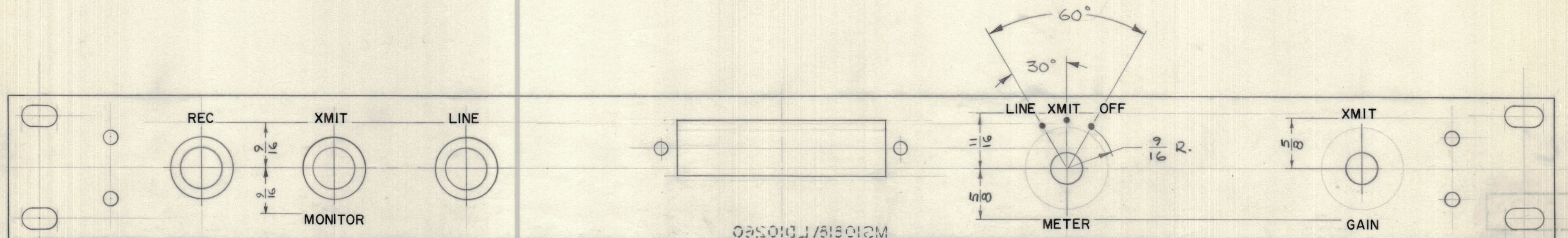
IF IT IS FOUND DESIRABLE TO CHANGE ANY TOLERANCE OR OTHER DETAIL SPECIFIED ON THIS DRAWING NOTIFY THE PURCHASER PROMPTLY.

MAXIMUM ALLOWABLE TOLERANCES HAVE BEEN DETERMINED AND DEVIATIONS WILL BE CAUSE FOR REJECTION. REMOVE ALL BURRS AND SHARP EDGES.

DIMENSIONS IN INCHES UNLESS OTHERWISE SPECIFIED

REQ.	ITEM	PART NO.	DESCRIPTION	SYMBOL
------	------	----------	-------------	--------

ISSUE	ITEM	CHANGED FROM	DATE	CN. NO.	DRAFTS	CHECKER	ENG. APP.
Ø		RELEASED TO PROD	MAR 2/67		RPL		
A		PART NO. ADDED	3-5-67	DREYS	RD		



02501011/818012M
 TMC PART NO. w LATEST REV LETTERS.
 1/8 HIGH BLACK GOTHIC, LOCATED ON
 REAR OF PANEL AS SHOWN.

REF TMC SPEC. S566

HEIGHT OF LETTERS	DEPTH OF STROKE	WIDTH OF STROKE
1/8	.020	.020
DOTS	.020	1/16 DIA.

UNLESS OTHERWISE SPECIFIED:
 LETTERS & DOTS TO BE WHITE FILLED

NOTE:
 AFTER ENGRAVING
 (1) S114 - ZINC CHROMATE PRIMER } FRONT AND
 (2) S115 - SMOOTH GRAY ENAMEL } EDGES ONLY

REF: MS10818

TOLERANCES		SCALE: 1:1
ALL OTHERS	DEC. DIM. ± FRAC. DIM. ± ANGULAR DIM. ±	DRILL, PUNCH, COMMERCIAL STOCK SIZES AND MANUFACTURERS TOLERANCES ARE NOT INCLUDED.

HYB-3	065/67		MAR 1/67
MODEL	PROJECT NO.	ASS'Y. NO.	DATE

TMC (Canada) LIMITED OTTAWA ONTARIO			
PANEL, FRONT (ENGRAVING)			
STOCK SIZE	MATERIAL WEIGHT PER PC.		
TYPE & TEMPER	HEAT TREAT. SPEC.	FINISH & SPEC. NO.	
DRAWN: RPL	ELEC. DES. APP.:	MECH. DES. APP.:	
CHECKED:	FINAL APPROVAL:		
LD10260 A			