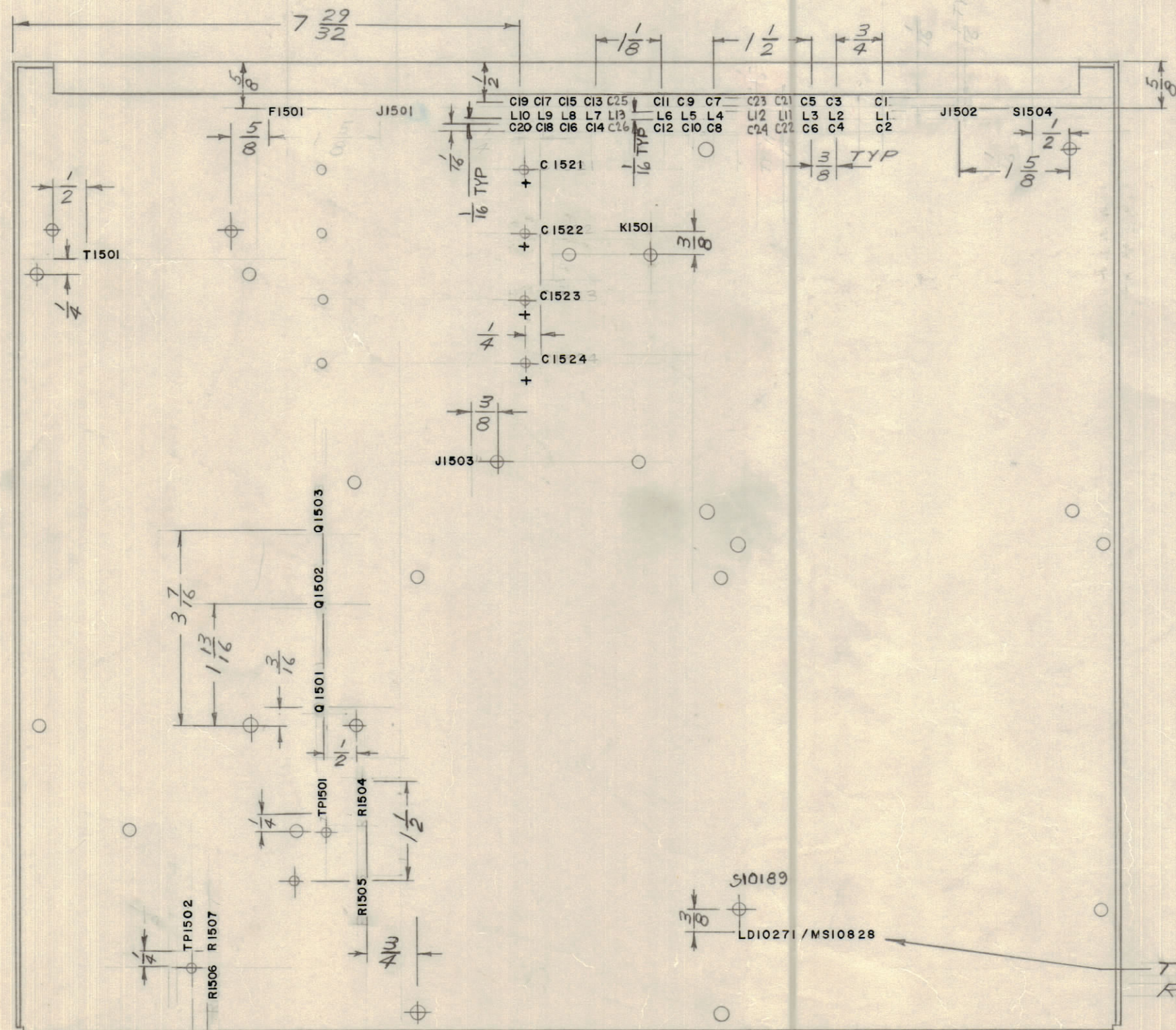
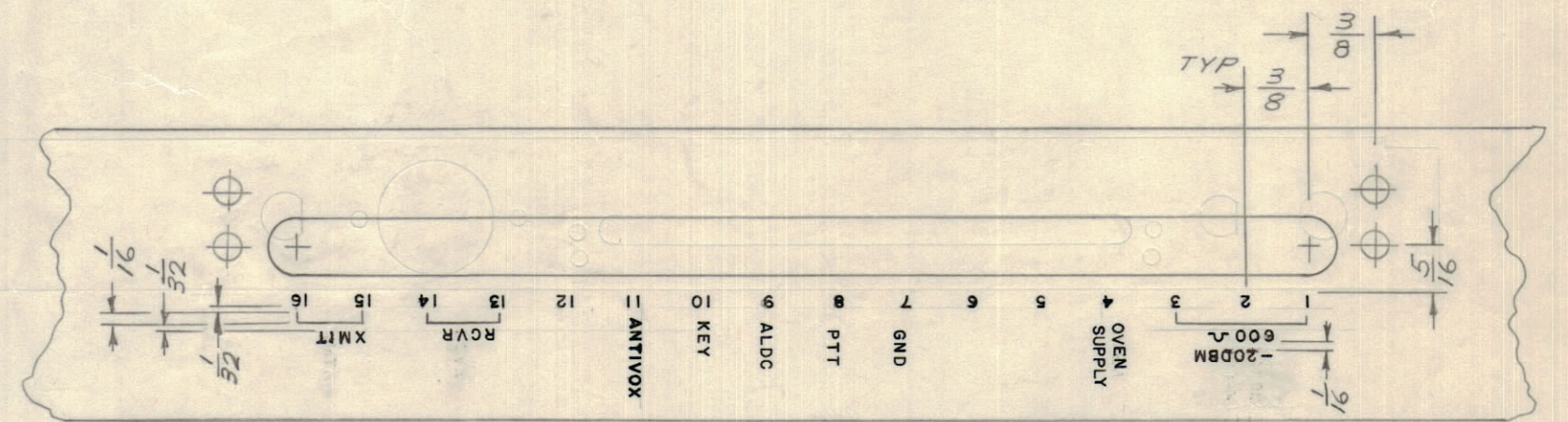
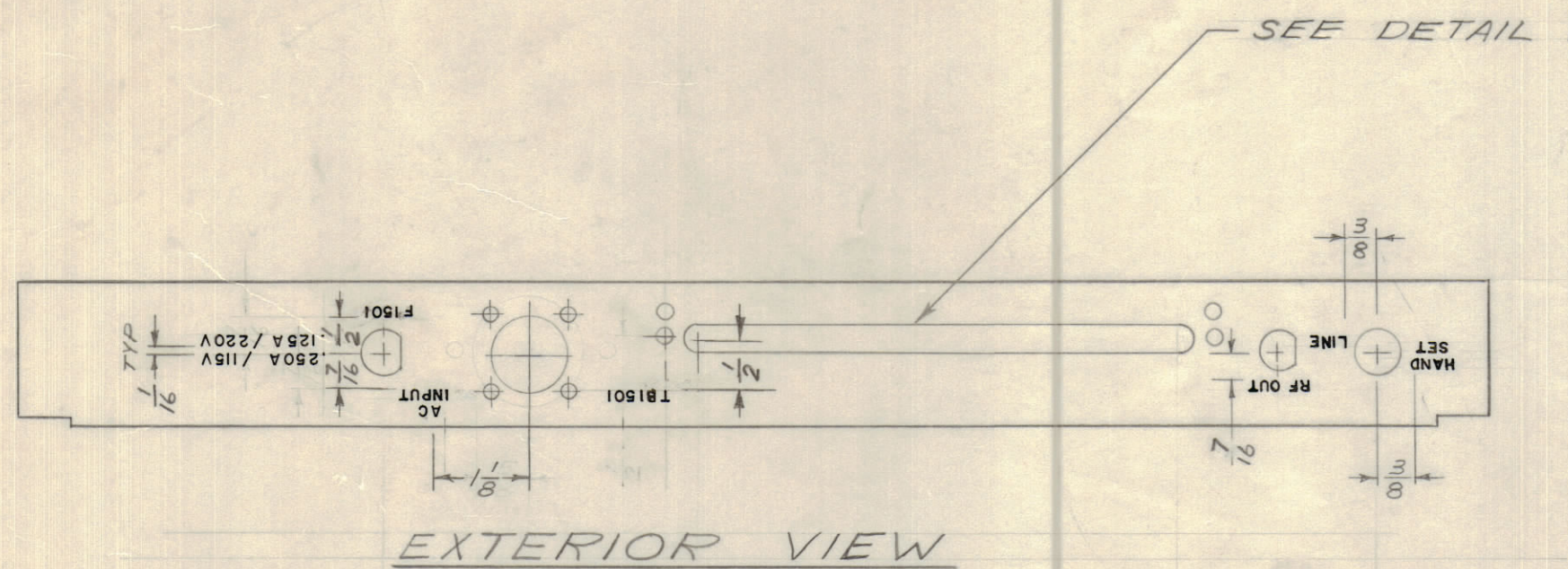


IF IT IS FOUND DESIRABLE TO CHANGE ANY TOLERANCE OR OTHER DETAIL SPECIFIED ON THIS DRAWING NOTIFY THE PURCHASER PROMPTLY.							DIMENSIONS IN INCHES UNLESS OTHERWISE SPECIFIED	
MAXIMUM ALLOWABLE TOLERANCES HAVE BEEN DETERMINED AND DEVIATIONS WILL BE CAUSE FOR REJECTION. REMOVE ALL BURRS AND SHARP EDGES.								
ISSUE	ITEM	CHANGED FROM	DATE	CN. NO.	DRAFTS	CHECKER	ENG. APP.	
X		ADDED ANTIVOX, PIN 11	17-8-64	EXC-022	AP			
Ø		REL TO PROD	24/6/65					
A		REV PER COMJ	JULY 1971	1050	LB			
B		REVISED	26 DEC 73		DMM			

REQ.	ITEM	PART NO.	DESCRIPTION	SYMBOL
------	------	----------	-------------	--------



MARKING PROCESS: AS PER TMC SPECIFICATION S-727.

LETTERING:  $\frac{1}{16}$  HIGH BLACK GOTHIC, LOCATED AS SHOWN.

LD10271 B

TMC PART NO 9/W LATEST REVISION LETTERS

REF: MS10828

TOLERANCES		SCALE: 1:2
ALL OTHERS	DEC. DIM. $\pm$ FRAC. DIM. $\pm$ ANGULAR DIM. $\pm$	DRILL, PUNCH, COMMERCIAL STOCK SIZES AND MANUFACTURERS TOLERANCES ARE NOT INCLUDED.

STE-5	060/67	BMA10634	19 JUNE 67
MODEL	PROJECT NO.	ASS'Y. NO.	DATE

STOCK SIZE		TMC (Canada) LIMITED OTTAWA ONTARIO	
MATERIAL		MARKING CHASSIS	
TYPE & TEMPER		RD	
HEAT TREAT. SPEC.		CHECKED	FINAL APPROVAL
FINISH & SPEC. NO.		LD10271 B	