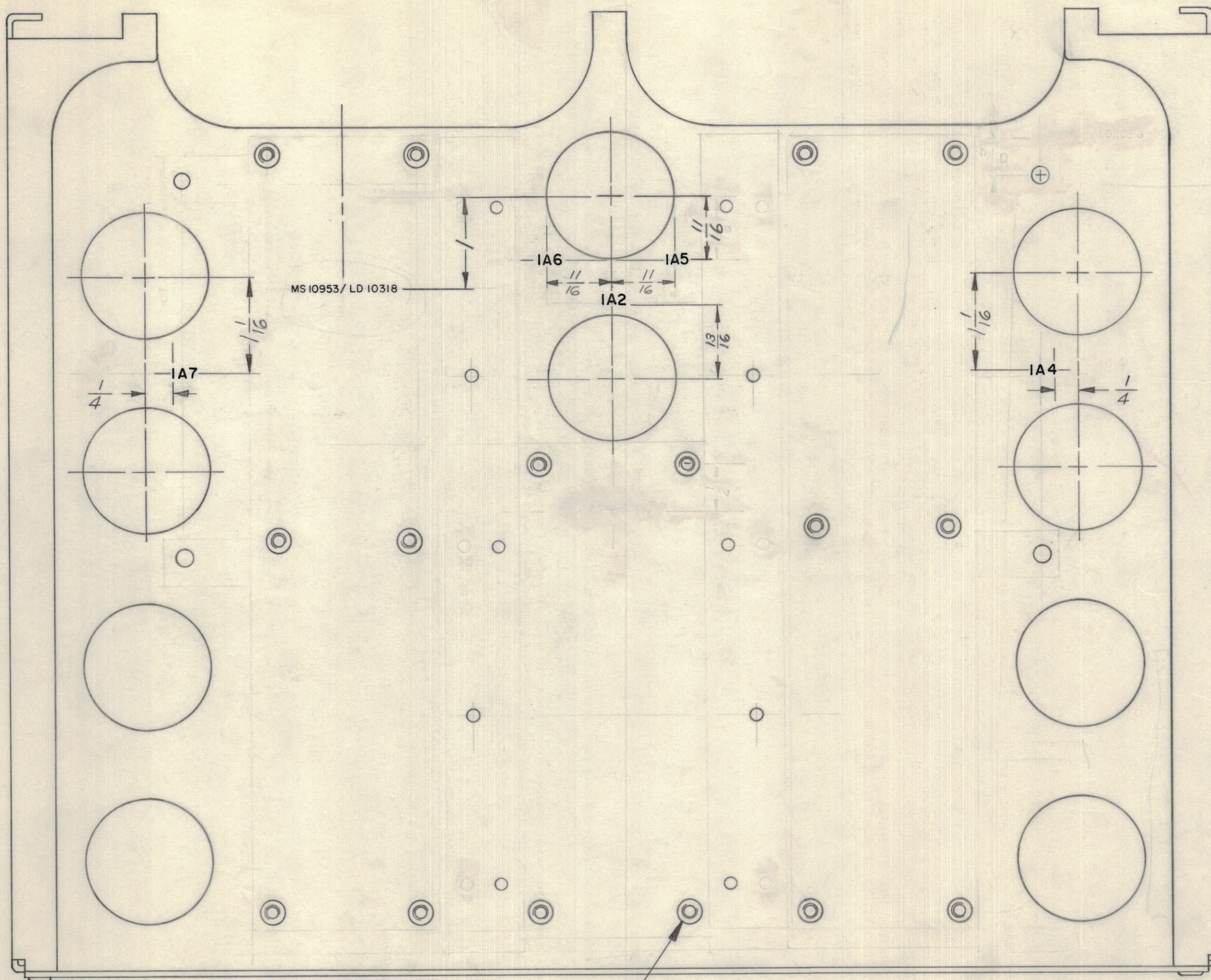


IF IT IS FOUND DESIRABLE TO CHANGE ANY TOLERANCE OR OTHER DETAIL SPECIFIED ON THIS DRAWING NOTIFY THE PURCHASER PROMPTLY.		DIMENSIONS IN INCHES UNLESS OTHERWISE SPECIFIED					
MAXIMUM ALLOWABLE TOLERANCES HAVE BEEN DETERMINED AND DEVIATIONS WILL BE CAUSE FOR REJECTION. REMOVE ALL BURRS AND SHARP EDGES.							
ISSUE	ITEM	CHANGED FROM	DATE	CN. NO.	DRAFTS	CHECKER	ENG. APP.
Ø		REL TO PROD	MAR 6/69		AD		<i>[Signature]</i>

REQ.	ITEM	PART NO.	DESCRIPTION	SYMBOL
16	1	TE164-1	NUT, PLAIN, CLINCH	



LD10318 Ø

NOTE:

MARKING PROCESS - AS PER TMC SPEC. NO. 727
 LETTERING - 1/8 HIGH BLACK GOTHIC
 LOCATED AS SHOWN.

REF: MS 10953

TOLERANCES		SCALE:
ALL OTHERS	DEC. DIM. ± .XX*.01 FRAC. DIM. ± 1/64 ANGULAR DIM. ± 0° 30'	DRILL, PUNCH, COMMERCIAL STOCK SIZES AND MANUFACTURERS TOLERANCES ARE NOT INCLUDED.

AMC 32	074/69	FEB 25/69
MODEL	PROJECT NO.	DATE

STOCK SIZE		TMC (Canada) LIMITED OTTAWA ONTARIO	
MATERIAL		CHASSIS, CRADLE LETTERING	
TYPE & TEMPER		AP	<i>[Signature]</i>
HEAT TREAT. SPEC.		CHECKED	FINAL APPROVAL
FINISH & SPEC. NO.		LD10318 Ø	