

7

6

5

4

3

2

1

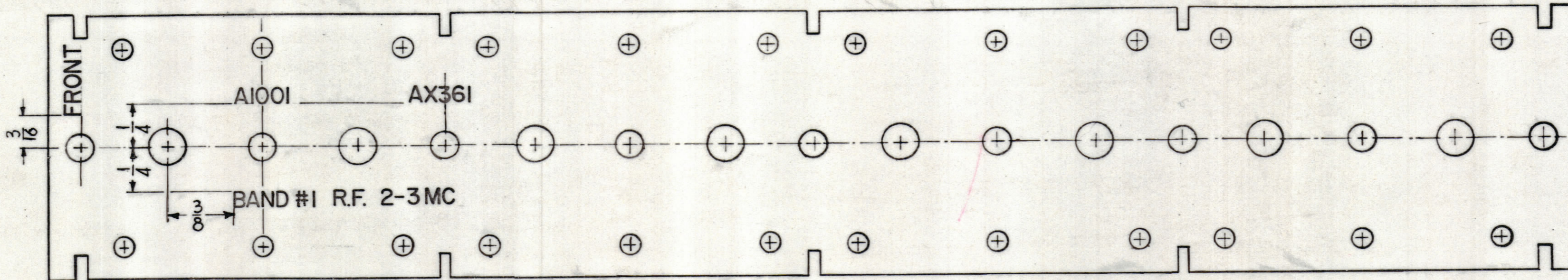
REVISIONS				
ZONE	SYM	DESCRIPTION	DATE	E.M.N. NO.

**NOTICE TO PERSONS RECEIVING THIS DRAWING**

THE TECHNICAL MATERIEL CORPORATION claims proprietary right in the material disclosed herein. This drawing is issued in confidence for engineering information only and may not be reproduced or used to manufacture anything shown hereon without permission from THE TECHNICAL MATERIEL CORPORATION to the user. This drawing is loaned for mutual assistance and is subject to recall at any time.

Property of:

THE TECHNICAL MATERIEL CORPORATION  
MAMARONECK, NEW YORK



- ~ UNLESS OTHERWISE SPECIFIED ~
- 1 - 3/32 HIGH BLACK LUSTERLESS, GOTHIC LETTERING
  - MARKING PROCESS: AS PER TMC SPECIFICATION S-727
  - 2 - LETTER GROUPS TO BE CENTERED ON HOLES.

LD-1121

REF - PX-649 (2)

REQ'D.	ITEM	PART NUMBER	DESCRIPTION	SYMBOL
<b>ANGER</b>				
<b>LIST OF MATERIAL</b>				
MATERIAL		THE TECHNICAL MATERIEL CORP. MAMARONECK, NEW YORK		
FINISH		TITLE LETTERING, RF TERMINAL BOARD BAND #1		
UNLESS OTHERWISE SPECIFIED DIMENSIONS ARE IN INCHES AND INCLUDE CHEMICALLY APPLIED OR PLATED FINISHES		DRAWN: <i>D. J. Man</i>	DATE: 6-16-52	FINAL APPROVAL: <i>BP</i>
		CHECKER: <i>LD</i>	DATE: 6-17-52	
		ELECT. DES.: <i>J. ANGER</i>	DATE: <i>6/17/52</i>	LD-1121
		MECH. DES.:	DATE:	

HER-1/T		ASBY. NO.
QTY./UNIT	MODEL USED ON	
SCALE <b>DOUBLE</b>	CODE (8) A-2371	
THE CONTENTS OF THIS DRAWING ARE THE EXCLUSIVE PROPERTY OF THE TECHNICAL MATERIEL CORP. ITS UNAUTHORIZED USE OR REPRODUCTION IN WHOLE OR IN PART IS STRICTLY FORBIDDEN.		

**NOTES**

7

6

5

4

3

2

1