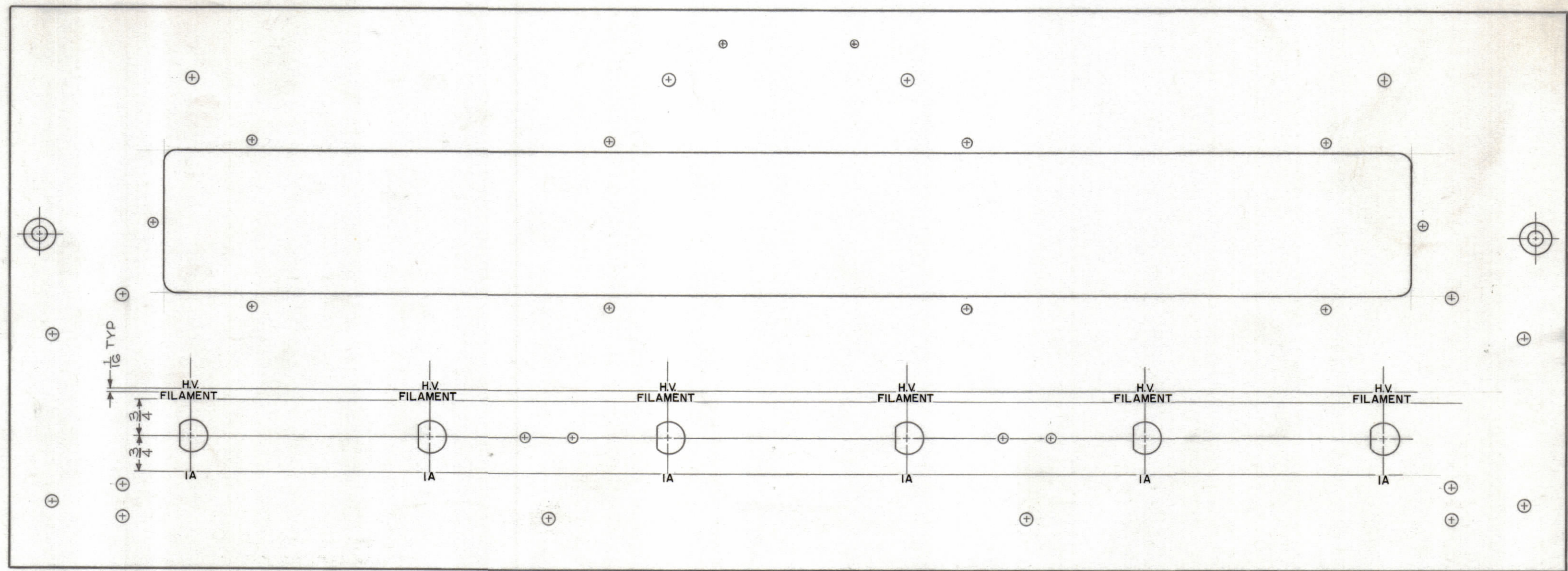


REVISIONS					
ZONE	SYM	DESCRIPTION	DATE	E.M.N. NO.	APPD
	0	ORIGINAL RELEASE FOR PRODUCTION	3-2-64		A.M.



—FRONT VIEW SHOWN—

- ~ UNLESS OTHERWISE SPECIFIED ~
1. ENGRAVING TO BE 1/8 HIGH GOTHIC, WHITE FILLED.
 2. ALL LETTER GROUPS TO BE CENTERED ON HOLES.

LETTER HEIGHT	DEPTH OF STROKE	WIDTH OF STROKE
1/8	.010	.020

QTY./UNIT	MODEL USED ON	ASSY. NO.
1	GPT-200K	AP-110
SCALE	CODE	
1:2	A	

THE CONTENTS OF THIS DRAWING ARE THE EXCLUSIVE PROPERTY OF THE TECHNICAL MATERIEL CORP. ITS UNAUTHORIZED USE OR REPRODUCTION IN WHOLE OR IN PART IS STRICTLY FORBIDDEN.

REF:MS-3059

REQ'D.	ITEM	PART NUMBER	DESCRIPTION	SYMBOL
F. BUDETTI LIST OF MATERIAL				
MATERIAL		THE TECHNICAL MATERIEL CORP. MAMARONECK, NEW YORK		
FINISH		TITLE MARKING, FRONT PANEL MARKING PROCESS: ENGRAVING		
UNLESS OTHERWISE SPECIFIED DIMENSIONS ARE IN INCHES AND INCLUDE CHEMICALLY APPLIED OR PLATED FINISHES		DRAWN <i>[Signature]</i>	DATE 2/18/63	FINAL APPROVAL <i>[Signature]</i>
DECIMALS .X ± .05 .XX ± .01 .XXX ± .005		CHECKED <i>[Signature]</i>	DATE 11/20/63	
FRACTIONS ± 1/64 ANGLES ± 0° 30'		ELECT. DES. <i>[Signature]</i>	DATE 1/17/64	
TOLERANCES		MECH. DES. <i>[Signature]</i>	DATE 2/17/64	
SHEET 1 OF 2				LD-1169 0
				REV. LTR.

NOTES

LD-1169 0