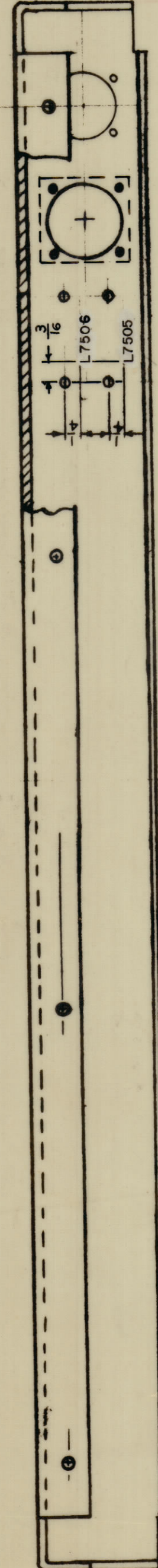
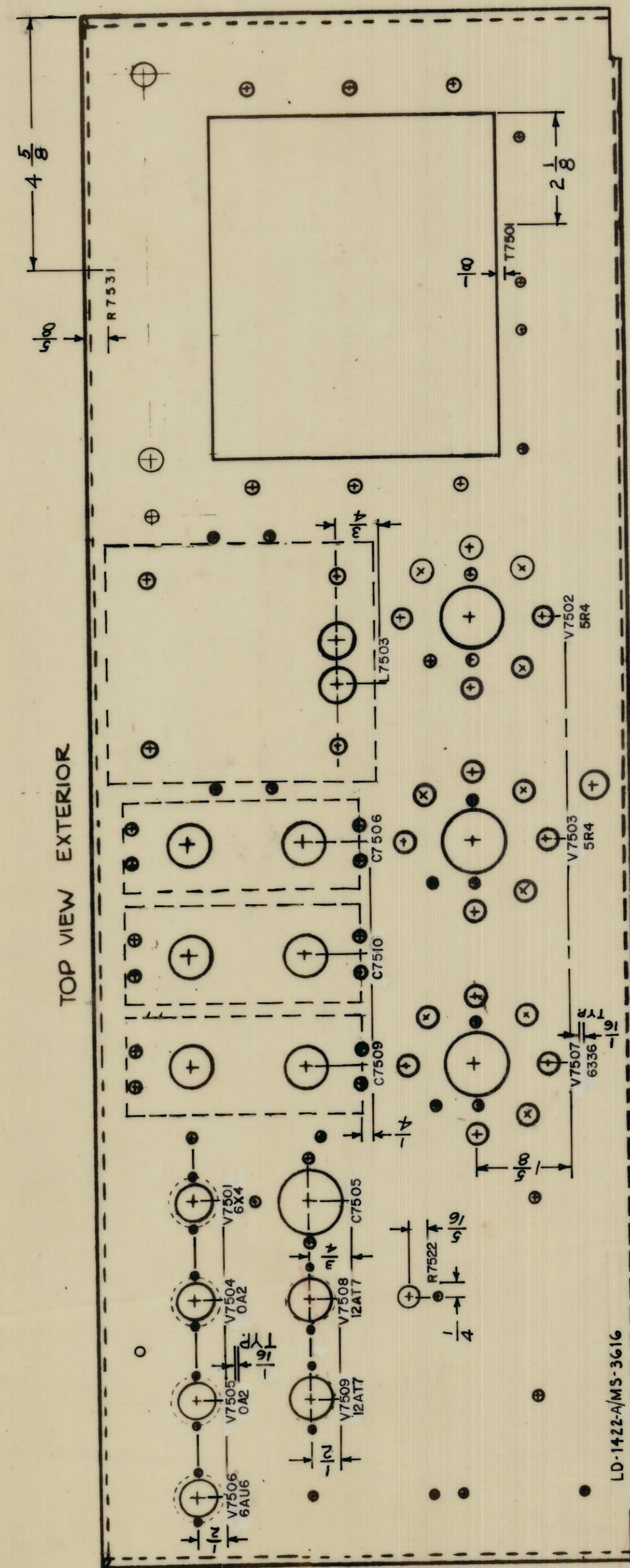


IF IT IS FOUND DESIRABLE TO CHANGE ANY TOLERANCE OR OTHER DETAIL SPECIFIED ON THIS DRAWING NOTIFY THE PURCHASER PROMPTLY.
 MAXIMUM ALLOWABLE TOLERANCES HAVE BEEN DETERMINED AND DEVIATIONS WILL BE CAUSE FOR REJECTION.
 REMOVE ALL BURRS AND SHARP EDGES

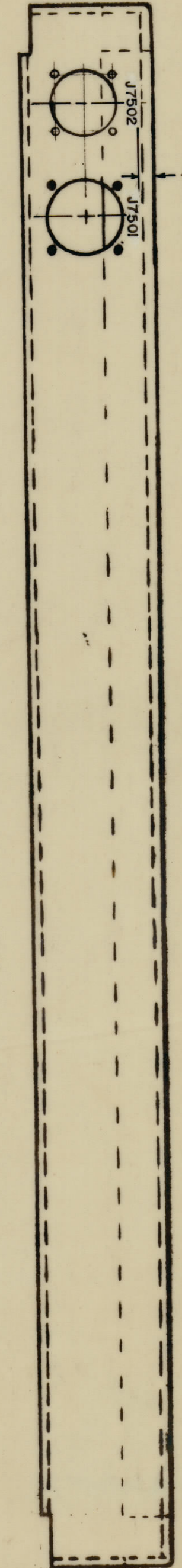
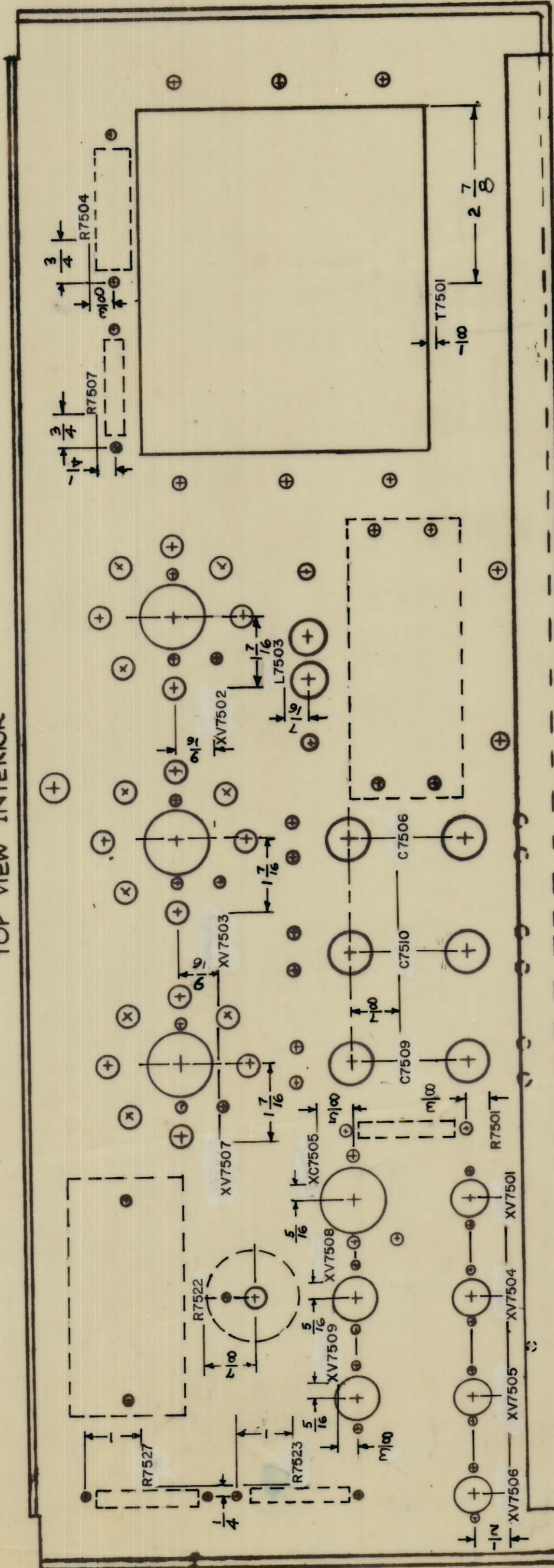
REVISIONS RECEIVING THIS DRAWING

THE TECHNICAL MATERIEL CORPORATION claims proprietary right in the material disclosed hereon. This drawing is issued in confidence for engineering information only and may not be reproduced or used to manufacture anything shown hereon without permission from THE TECHNICAL MATERIEL CORPORATION. In the event this drawing is loaned for mutual assistance and is expected to recall at any time.

Property of:
 THE TECHNICAL MATERIEL CORPORATION
 MAMARONECK, NEW YORK



TOP VIEW INTERIOR



ALL LETTERING 1/8 HIGH BLACK GOTHIC, LOCATED AS SHOWN.
 ALL LETTER GROUPS TO BE CENTERED ON HOLES.

MARKING PROCESS: AS PER TMC SPECIFICATION S-727

LD-1422 A

A	I	REVISED & REDRAWN COMPLETELY	4/15/64	11247 A.M.	@	200	
ISSUE	ITEM	CHANGED FROM	DATE	CH. NO.	DRAFTS	CHECKER	ENG. APP.
TOLERANCES		SCALE:					
ALL DEC. DIM. ±	FRAC. DIM. ±	DRILL PUNCH, COMMERCIAL STOCK SIZES AND MANUFACTURERS TOLERANCES ARE NOT INCLUDED					
OTHER ANGULAR DIM. ±							

1	GPT-40K04	AP-117	11-27-63
REV PER UNIT	MODEL	PROJECT NO.	DATE
USED ON			

REF: MS-3616			
REQ. ITEM	PART NO.	F. BUDETTI	DESCRIPTION
STOCK SIZE		THE TECHNICAL MATERIEL CORP. MAMARONECK, NEW YORK	
MATERIAL		MARKING, CHASSIS, MAIN	
WEIGHT PER PC.		MARKING PROCESS: AS PER TMC SPEC S-727	
TYPE & TEMPER		W. A. FRANCO	2B
HEAT TREAT SPEC.		DRAWN	MECH. DES. APP.
FINISH & SPEC. NO.		CHECKED	FINAL APPROVAL
		LD-1422 A	