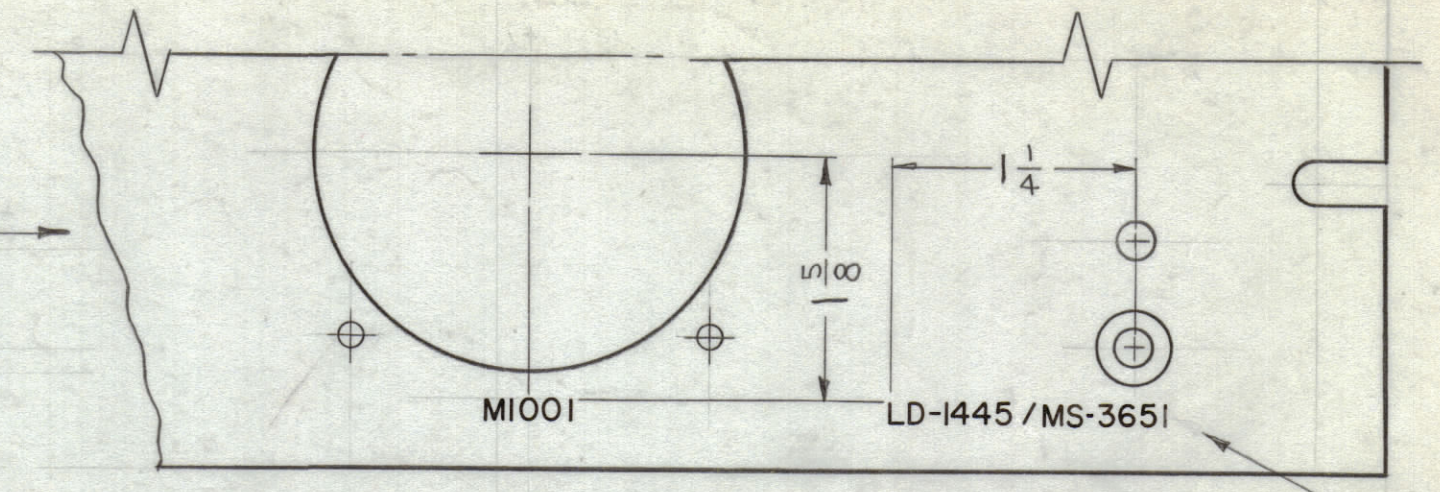


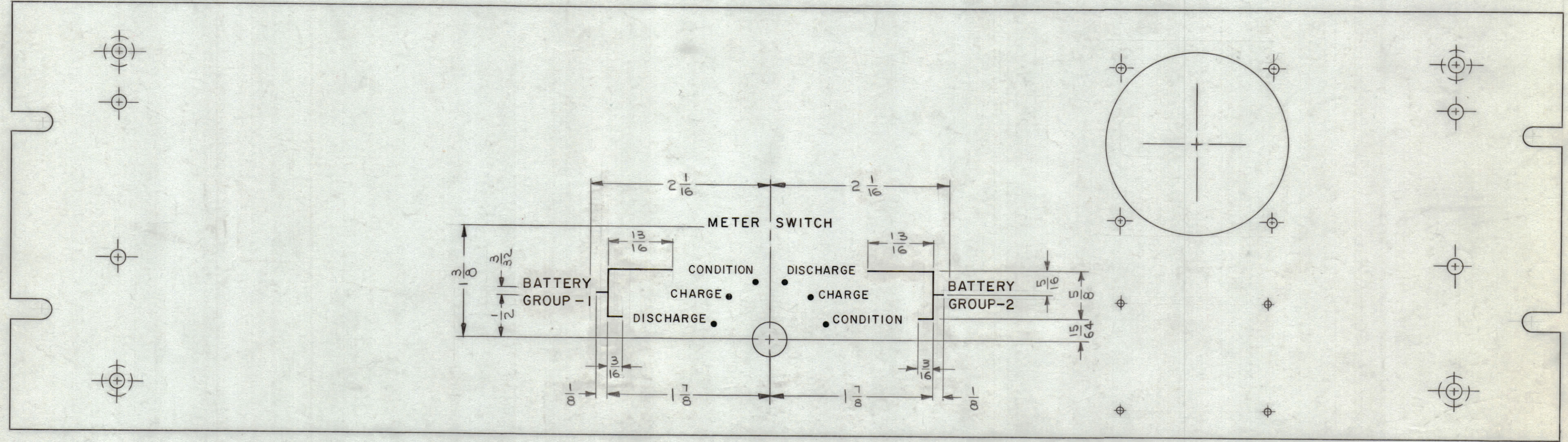
REVISIONS							
ZONE	SYM	DESCRIPTION	DATE	E.M.N. NO.	DRAFT	CHKD	APPD
	Ø	ORIGINAL RELEASE FOR PRODUCTION	10-29-64	Ø	Ø		

~ UNLESS OTHERWISE SPECIFIED ~
 1~ MARKING TO BE 1/8 HIGH BLACK GOTHIC, LOCATED AS SHOWN.
 2~ MARKING PROCESS: AS PER TMC SPEC. S-727.

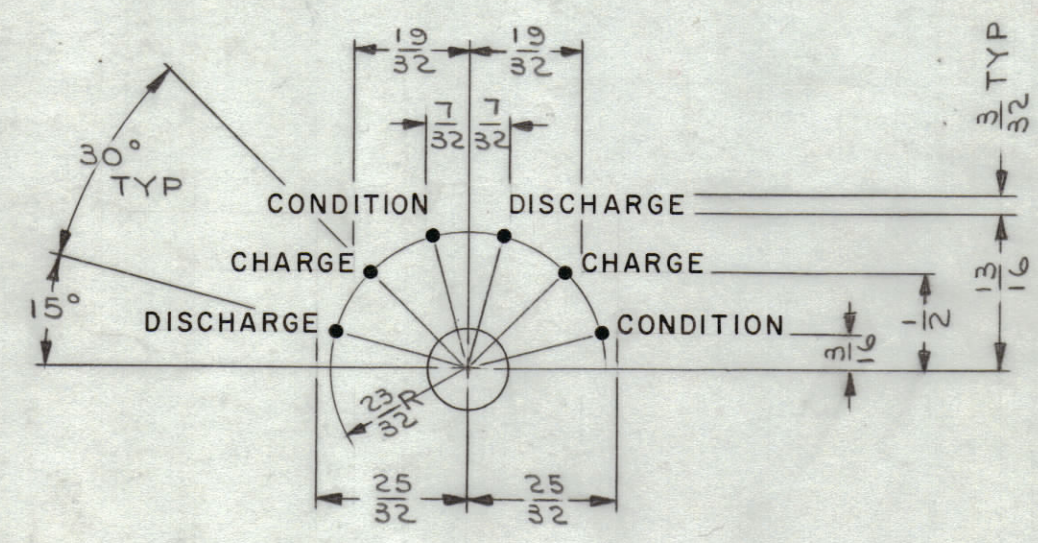
MARKING
 -PARTIAL REAR VIEW-



SEE NOTE #5



ENGRAVING



HEIGHT OF LETTERS	DEPTH OF STROKE	WIDTH OF STROKE
3/32	.010	.015
1/8	.010	.020
DOTS	.010	1/16 DIA.
LINEWORK	.010	.015

~ UNLESS OTHERWISE SPECIFIED ~
 1-ENGRAVING TO BE 1/8 HIGH GOTHIC, WHITE FILLED.
 2-ALL LETTER GROUPS TO BE CENTERED ON HOLES.
 3-ALL DOTS TO BE WHITE FILLED.
 4-ALL LINES TO BE WHITE FILLED.
 5-MARK TMC PART NO. WITH LATEST REV. LETTER.

REF: MS-3651

REQ'D.	ITEM	PART NUMBER	DESCRIPTION	SYMBOL
	M. GELLMAN		LIST OF MATERIAL	
MATERIAL		THE TECHNICAL MATERIEL CORP. MAMARONECK, NEW YORK		
FINISH		TITLE MARKING, PANEL, FRONT MARKING METHOD - SEE PICTORIALS		
UNLESS OTHERWISE SPECIFIED DIMENSIONS ARE IN INCHES AND INCLUDE CHEMICALLY APPLIED OR PLATED FINISHES		DRAWN J. LESHINSKI	DATE 1/2/64	FINAL APPROVAL [Signature]
		CHECKED [Signature]	DATE 10-29-64	
		ELECT. DES.	DATE	
		MECH. DES.	DATE	
		DATE 10-29-64		SHEET
		LD-1445		Ø
				REV. LTR.

1	BPS(-)-1	
QTY./UNIT	MODEL USED ON	ASS'Y. NO.
SCALE 1:1	CODE A	

THE CONTENTS OF THIS DRAWING ARE THE EXCLUSIVE PROPERTY OF THE TECHNICAL MATERIEL CORP. ITS UNAUTHORIZED USE OR REPRODUCTION IN WHOLE OR IN PART IS STRICTLY FORBIDDEN.

NOTES