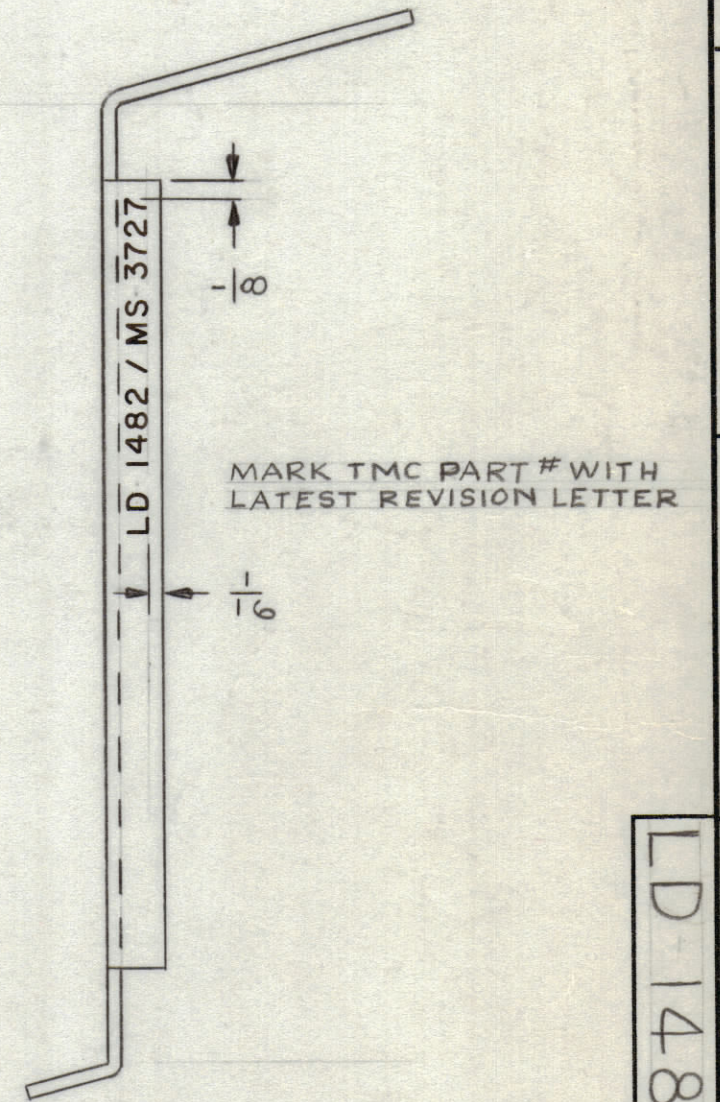
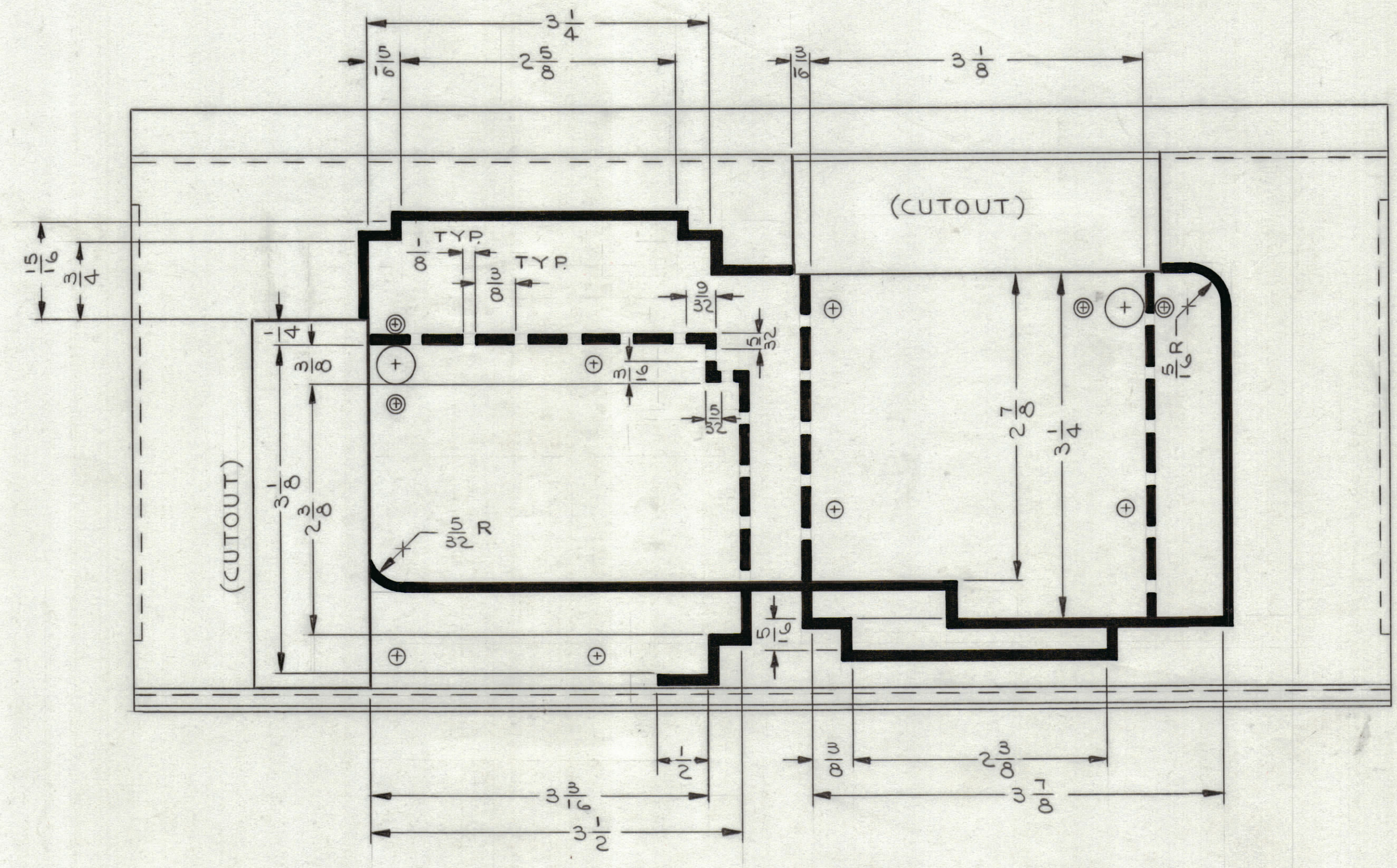


REVISIONS							
ZONE	SYM	DESCRIPTION	DATE	E.M.N. NO.	DRAFT	CHKD	APPD
-4	0	ORIGINAL RELEASE FOR PRODUCTION	5/12/64	0	A.M.	Q	



- UNLESS OTHERWISE SPECIFIED -

- 1-MARKING PROCESS: AS PER TMC SPECIFICATION S-727.
- 2-LETTERING: 1/8 HIGH BLACK GOTHIC, LOCATED AS SHOWN.
- 3-ALL LINES TO BE 3/32 THK IN BLACK, LOCATED AS SHOWN.

REF. MS 3727

1	VLR-1	
Q'TY./UNIT	MODEL USED ON	ASS'Y. NO.
SCALE	CODE	
1:1	A	
THE CONTENTS OF THIS DRAWING ARE THE EXCLUSIVE PROPERTY OF THE TECHNICAL MATERIEL CORP. ITS UNAUTHORIZED USE OR REPRODUCTION IN WHOLE OR IN PART IS STRICTLY FORBIDDEN.		

REQ'D.	ITEM	PART NUMBER	DESCRIPTION	SYMBOL
LIST OF MATERIAL				
MATERIAL		THE TECHNICAL MATERIEL CORP. MAMARONECK, NEW YORK		
FINISH		TITLE MARKING, BRACKET, MOUNTING (TEST CARDS VLR-1)		
UNLESS OTHERWISE SPECIFIED DIMENSIONS ARE IN INCHES AND INCLUDE CHEMICALLY APPLIED OR PLATED FINISHES		DRAWN J. LESHINSKI	DATE 3/17/64	FINAL APPROVAL [Signature]
DECIMALS .X ± .05 .XX ± .01 .XXX ± .005		CHECKED [Signature]	DATE 5-8-64	DATE [Blank]
FRACTIONS ± 1/64 ANGLES ± 0° 30'		ELECT. DES. [Signature]	DATE 5-6-64	DATE [Blank]
TOLERANCES		MECH. DES. [Signature]	DATE 5-6-64	DATE [Blank]
			LD-1482-0	
			SHEET	REV. LTR.

NOTES

LD-1482-0