

7

6

5

4

3

2

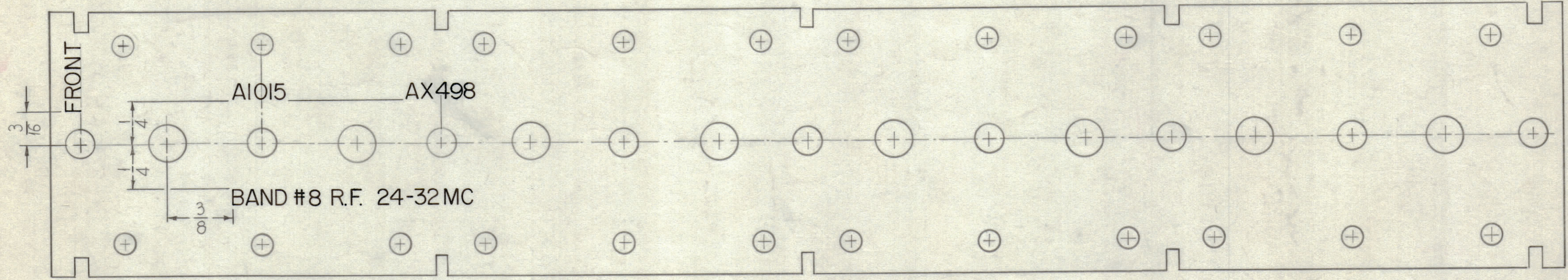
1

NOTICE TO PERSONS RECEIVING THIS DRAWING

THE TECHNICAL MATERIEL CORPORATION claims proprietary right in the material disclosed hereon. This drawing is issued in confidence for engineering information only and may not be reproduced or used to manufacture anything shown hereon without permission from THE TECHNICAL MATERIEL CORPORATION to the user. This drawing is loaned for mutual assistance and is subject to recall at any time.

Property of:
THE TECHNICAL MATERIEL CORPORATION
MAMARONECK, NEW YORK

REVISIONS							
ZONE	SYM	DESCRIPTION	DATE	E.M.N. NO.	DRAFT	CHKD	APPD
	X	EXPERIMENTAL RELEASE	3-30-64				
	Ø	ORIGINAL RELEASE FOR PRODUCTION	8-13-64				



~ UNLESS OTHERWISE SPECIFIED ~ BE 3/32 HIGH
 1 ~ 3/32 HIGH BLACK LUSTERLESS GOTHIC LETTERING.
 (PH MARKING PROCESS: AS PER T.M.C SPECIFICATION S-727)
 2 ~ LETTER GROUPS TO BE CENTERED ON HOLES.

LD 1484 Ø

REF. ~ PX 649(2)

REQ'D.	ITEM	PART NUMBER	DESCRIPTION	SYMBOL
1	HFR-2	A-3568		
1	HFR-1A	A-3568		

REQ'D.	ITEM	PART NUMBER	DESCRIPTION	SYMBOL
<p>ANGER LIST OF MATERIAL</p> <p>MATERIAL THE TECHNICAL MATERIEL CORP. MAMARONECK, NEW YORK</p> <p>FINISH TITLE MARKING, RF. TERMINAL BOARD BAND # 8</p>				
UNLESS OTHERWISE SPECIFIED DIMENSIONS ARE IN INCHES AND INCLUDE CHEMICALLY APPLIED OR PLATED FINISHES		DRAWN G.D.L	DATE 3-23-64	FINAL APPROVAL
DECIMALS .X ± .05 .XX ± .01 .XXX ± .005		CHECKED @	DATE 2-17-64	
FRACTIONS ± 1/64 ANGLES ± 0° 30'		ELECT. DES. J. Anger	DATE 3/30/64	
TOLERANCES		MECH. DES.	DATE	
THE CONTENTS OF THIS DRAWING ARE THE EXCLUSIVE PROPERTY OF THE TECHNICAL MATERIEL CORP. ITS UNAUTHORIZED USE OR REPRODUCTION IN WHOLE OR IN PART IS STRICTLY FORBIDDEN.			SHEET	REV. LTR.

NOTES

7

6

5

4

3

2

1