

MARKING PROCESS: AS PER TMC SPEC. 5727.

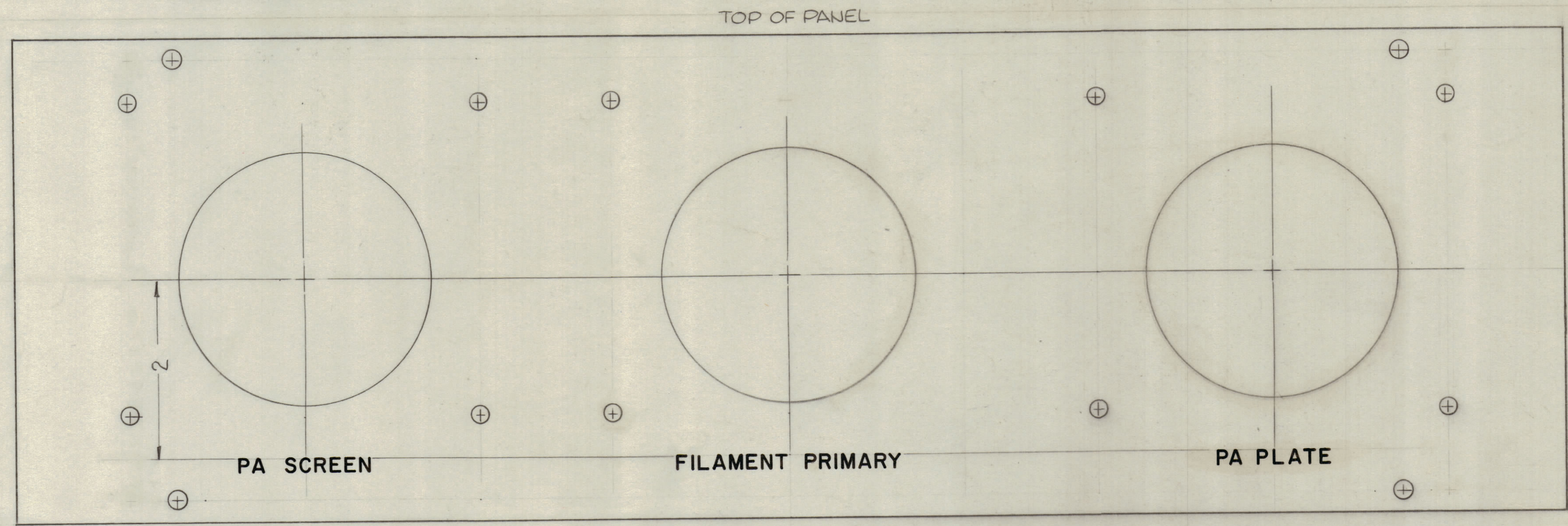
ALL LETTERING 1/8 HIGH WHITE GOTHIC.

SCALE: 1" = 2"

LD1487- /PX450-

MARK TMC PART NO. WITH LATEST REVISION LETTERS.

REVISIONS					
ZONE	SYM	DESCRIPTION	DATE	E.M.N. NO.	APPD
		ORIGINAL RELEASE FOR PRODUCTION	5/9/67		file



FRONT VIEW SHOWN (FULL SCALE)

HEIGHT OF LETTERING	DEPTH OF STROKE	WIDTH OF STROKE
3/16	.010	.025

- NOTE -
- 1) ENGRAVING TO BE GOTHIC WHITE FILLED SIZE SHOWN ON CHART
  - 2) ALL LETTER GROUPS TO BE CENTERED ON HOLES
  - 3) ALL ENGRAVING AS PER TMC SPECIFICATION S566.

LD-1487

REF: PX450

REQ'D.	ITEM	PART NUMBER	DESCRIPTION	SYMBOL
	Q.POSE		LIST OF MATERIAL	
MATERIAL		THE TECHNICAL MATERIEL CORP. MAMARONECK, NEW YORK		
FINISH		ENMARKING, METER PANEL		
UNLESS OTHERWISE SPECIFIED DIMENSIONS ARE IN INCHES AND INCLUDE CHEMICALLY APPLIED OR PLATED FINISHES		DRAWN	DATE	FINAL APPROVAL
		G.D.L.	4-5-63	[Signature]
		CHECKED	DATE	DATE
		[Signature]	6-24-65	5/9/67
DECIMALS .X ± .05 .XX ± .01 .XXX ± .005		FRACTIONS ± 1/64 ± 1/32 ± 1/16		DATE
TOLERANCES		ANGLES ± 0° 30'		DATE
				LD-1487
				REV. LTR.

Q'TY./UNIT	MODEL USED ON	ASS'Y. NO.
SCALE 1:1	CODE A	

NOTES